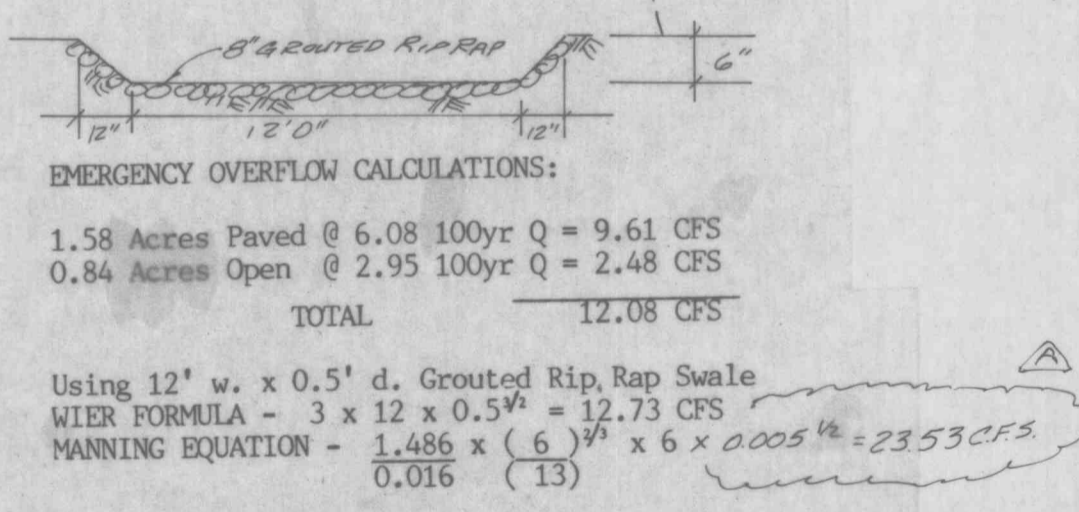
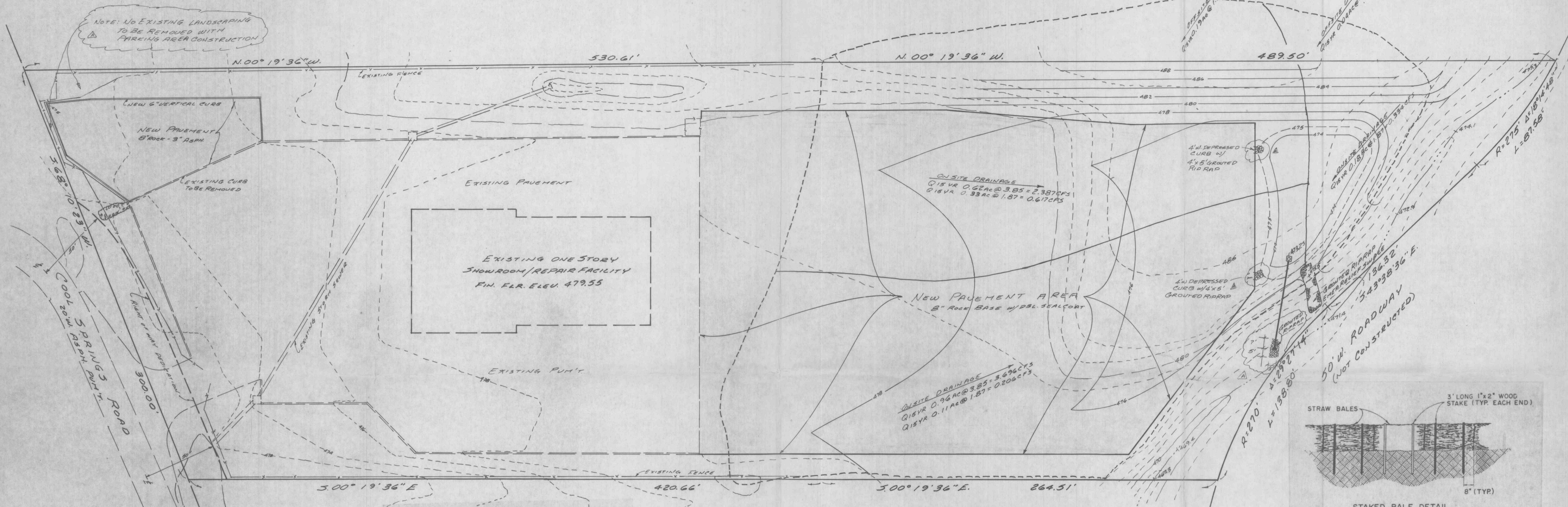
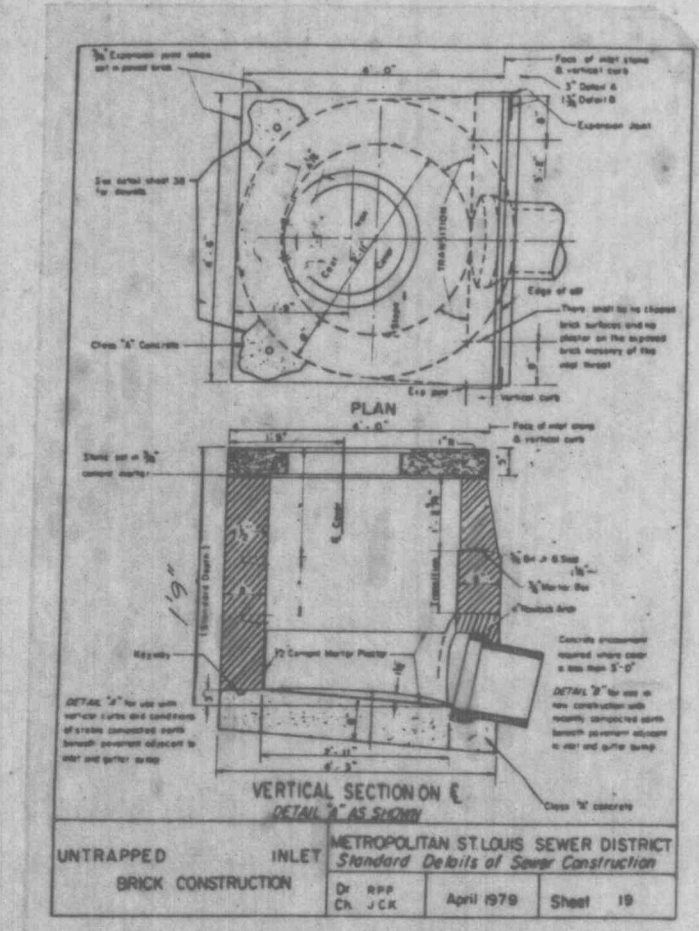
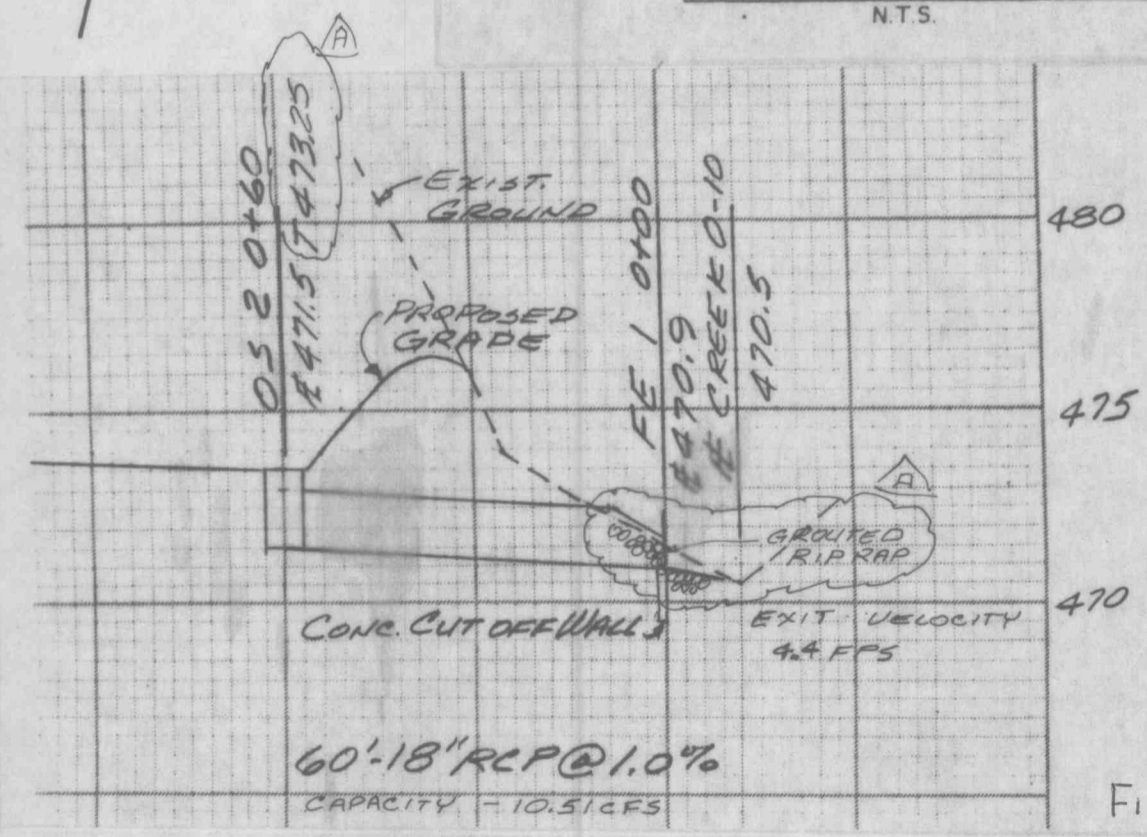
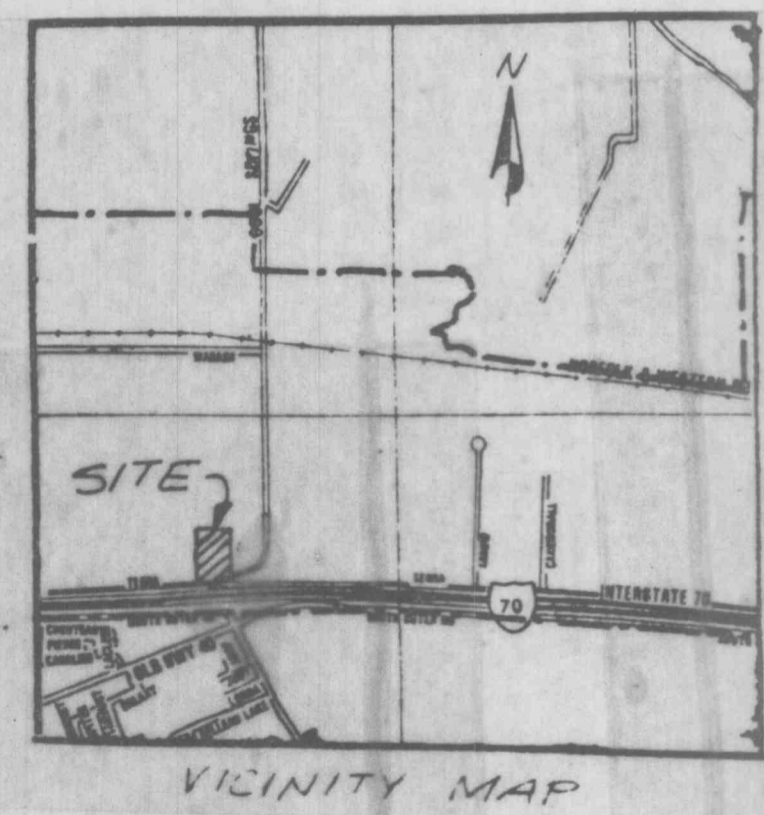


O'FALLON INDUSTRIAL CENTER ~ NAVISTAR PARKING LOT EXPANSION PLAN

NORTH
SCALE: 1"=30'

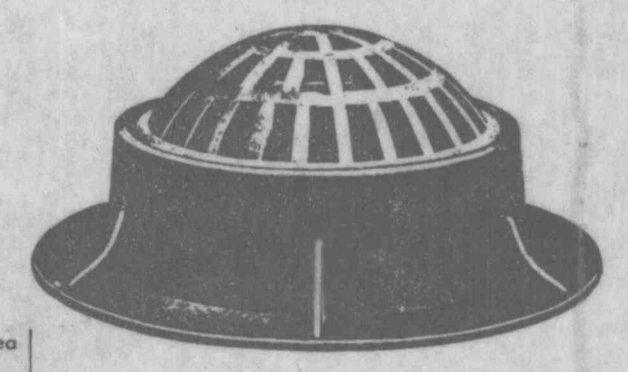


GENERAL NOTES:
 All graded areas to be seeding and mulched.
 Building Department to be notified prior to any construction.
 RETENTION BASIN TO BE OWNED & MAINTAINED BY NAVISTAR
 CONTRACTOR TO PROVIDE STAKED STRAW BALES AS SILTATION CONTROL, IF NEEDED, TO INSURE ADEQUATE PROTECTION OF CREEK AND ADJOINING PROPERTIES FROM SILTATION.



R-2560 Series Beehive Grates with Frames

Designed for drainage in circumstances where clogging of a flat grating is a problem. Excellent for roadside or earth ditch catch basins.
 Specify:
 1. Catalog number.



Catalog No.	Dimensions in inches							Wt. lbs.	Open Area Sq. In.
	A	B	C	D	E	F	G		
R-2560-A	12	1 1/4	11	12 1/2	19	4	4	80	49
R-2560-B	15 1/2	1 1/4	15	15	21	5	3	120	25
R-2560-C	18	1 1/2	16 1/2	20 1/2	30	8	3	190	108
R-2560-D	22	1 1/2	20	24	38	4	4 1/2	195	108
R-2560-C2	22	1 1/2	20 1/2	24	28 1/2	6	4 1/2	270	108
R-2560-D	22	1 1/2	20	24 1/2	38	9	4 1/2	315	138
R-2560-D1	22	1 1/2	20	24 1/2	38	4	7	210	178
R-2560-D2	22	1 1/2	20 1/2	24	28 1/2	6	7	285	178
R-2560-D3	22	1 1/2	20	24 1/2	38	9	7	320	178
R-2560-E	23	1 1/2	20 1/2	25 1/2	35	9	7	320	178
R-2560-E1	25 1/4	1 1/2	24 1/2	26 1/2	35 1/2	9	6	285	177
R-2560-E2	25 1/4	1 1/2	24 1/2	26 1/2	35 1/2	7	9	215	255
R-2560-E3	25 1/4	1 1/2	24 1/2	23 1/2	32 1/2	8	4	285	177
R-2560-E4	25 1/4	1 1/2	24 1/2	23 1/2	32 1/2	8	9	300	255
R-2560-E5	25 1/4	1 1/2	24 1/2	26 1/2	35 1/2	8	6	320	177
R-2560-E6	25 1/4	1 1/2	24 1/2	26 1/2	35 1/2	8	9	350	255
R-2560-E7	25 1/4	1 1/2	24 1/2	26 1/2	35 1/2	9	6	350	177
R-2560-E8	25 1/4	1 1/2	24 1/2	26 1/2	35 1/2	9	9	375	255
R-2560-E9	25 1/4	1 1/2	24 1/2	26 1/2	35 1/2	10	6	360	177
R-2560-E10	25 1/4	1 1/2	24 1/2	26 1/2	35 1/2	10	9	385	255
R-2560-F	29	1 1/2	27	38	46	10	6	555	247
R-2560-G	32	1 1/2	30	36	46	7	4	350	215

EXISTING DRAINAGE TO BASIN:
 Onsite - 2.20 Acres @ 2.31 25yr. Q = 5.08 CFS
 Offsite - 0.23 Acres @ 2.31 25yr. Q = 0.53 CFS
 TOTAL EXISTING 5.61 CFS

PROPOSED DRAINAGE TO BASIN:
 Onsite Paved - 1.58 Acres @ 4.75 25yr. Q = 7.51 CFS
 Onsite Open - 0.61 Acres @ 2.31 25yr. Q = 1.41 CFS
 Offsite - 0.23 Acres @ 2.31 25yr. Q = 0.53 CFS
 TOTAL PROPOSED 9.45 CFS

RETENTION REQUIREMENTS:
 9.45 CFS Proposed - 5.61 CFS Existing = 3.84 CFS To Be Retained
 3.84 CFS x 60 sec/min x 30 min. storage = 6,912 cu. ft. Storage Required
 Storage Area Provided - 7,263 cu. ft. @ 1.5 ft. depth

STRUCTURE CALCULATIONS:
 Allowed release - 5.61 CFS Existing Runoff
 Using Neenan Foundary Grate #2560-D or equivalent having 0.25 sq. ft. Open
 ORIFICE FORMULA - $0.6 \times 0. \sqrt{2} \times 32.2 \times 1.5 = 5.60 \text{ CFS Proposed}$
 5.60 Proposed < 5.61 Existing

PREPARED FOR:
 NAVISTAR
 511 S. Cool Springs Road
 O'Fallon, MO 63366
 Larry Prichard
 928-2067

PREPARED BY:
 LUNDAN CORP.
 P. O. Box 3034
 St. Charles, MO 63303
 279-1545

REVISED MARCH 9, 1989

FILE COPY
APPROVED
 3/9/89
 Frank Godwin
 James A. Gigliotti LS2040