



ARCHITECT
WILSON ESTES
 POLICE ARCHITECTS
 523 WALNUT STREET
 KANSAS CITY, MO 64108
 P. 816.226.6700
 F. 816.226.6701

CIVIL
 GBA ARCHITECTS AND ENGINEERS
 225 S. MAIN STREET
 OFALLON, MO 63366
 P. 636.240.2444

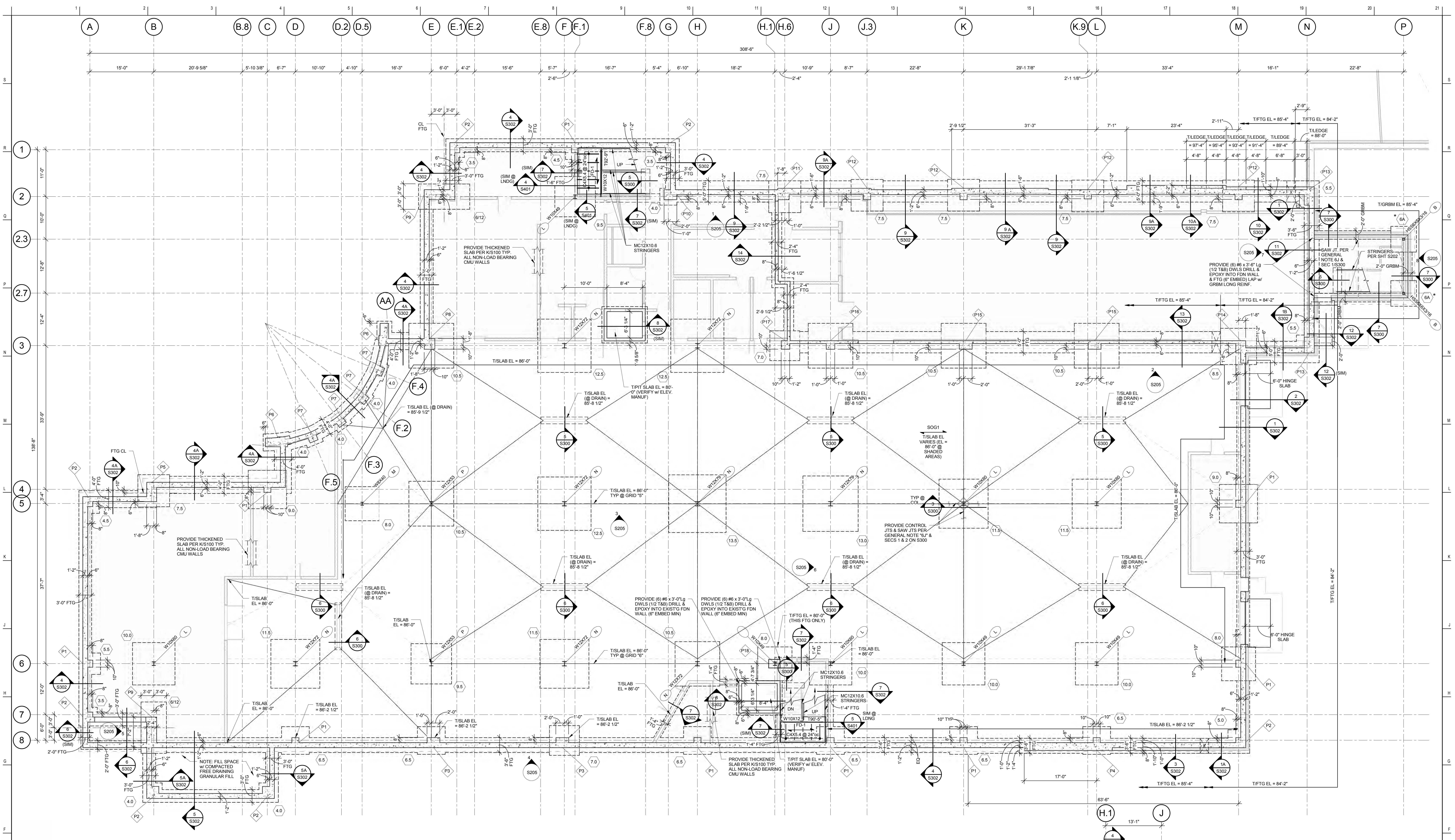
STRUCTURAL
 BOB D. CAMPBELL & CO., INC.
 4338 BELLEVUE
 KANSAS CITY, MO 64111
 P. 816.531.4144
 F. 816.531.6572

MEP
 HOSS & BROWN ENGINEERS, INC.
 11205 W 79TH ST.
 LENEXA, KS 66214
 P. 913.362.9200
 F. 913.362.9696

ASSOCIATE ARCHITECT
 BOND ARCHITECTS
 222 SOUTH CENTRAL AVENUE, SUITE 100
 ST. LOUIS, MO 63105
 P. 314.853.4994
 F. 314.853.4996

OWNER
 CITY OF OFALLON
 CONTACT: CHRIS CLERY
 100 NORTH MAIN STREET
 OFALLON, MO 63369
 P. 636.240.2000

OFALLON JUSTICE CENTER
 1019 BRYAN ROAD



COLUMN BASE PLATE SCHEDULE

TYPE	COLUMN	BASE PLATE	SHAPE	ANCHOR BOLTS	GROUT
A	PER PLAN	12"x14"x1"	A	(4) 3/8" x 1-9/16" Lg	1 1/2"
B	PER PLAN	RE NOTE #5	RE NOTE #5	RE NOTE #5	1 1/2"
C	PER PLAN	10"x12"x1"	C	(4) 1/2" x 2'-4" Lg A36 THREADED ROD (RE NOTE #6)	1 1/2"
D	PER PLAN	14"x10"x1"	D	(4) 1/2" x 2'-4" Lg A36 THREADED ROD (RE NOTE #6)	1 1/2"
E	PER PLAN	12"x14"x1"	A	(4) 1/2" x 2'-4" Lg A36 THREADED ROD (RE NOTE #6)	1 1/2"
F	PER PLAN	14"x10"x1 1/8"	C	(4) 1/2" x 2'-4" Lg A36 THREADED ROD (RE NOTE #6)	1 1/2"
G	PER PLAN	11"x11"x1"	B	(4) 1/2" x 2'-4" Lg A36 THREADED ROD (RE NOTE #6)	1 1/2"
H	PER PLAN	14"x14"x1 1/8"	A	(4) 1/2" x 2'-4" Lg A36 THREADED ROD (RE NOTE #6)	1 1/2"
I	PER PLAN	16"x16"x1 3/8"	A	(4) 1/2" x 2'-4" Lg A36 THREADED ROD (RE NOTE #6)	1 1/2"
J	PER PLAN	14"x10"x1 1/8"	D	(4) 1/2" x 2'-4" Lg A36 THREADED ROD (RE NOTE #6)	1 1/2"
K	PER PLAN	16"x16"x1 3/8"	A	(4) 1/2" x 2'-4" Lg A36 THREADED ROD (RE NOTE #6)	1 1/2"
L	PER PLAN	14"x14"x1 1/8"	A	(4) 1/2" x 2'-4" Lg A36 THREADED ROD (RE NOTE #6)	1 1/2"
M	PER PLAN	18"x18"x1 5/8"	A	(4) 1/2" x 2'-4" Lg A36 THREADED ROD (RE NOTE #6)	1 1/2"
N	PER PLAN	18"x16"x1 1/2"	A	(4) 1/2" x 2'-4" Lg A36 THREADED ROD (RE NOTE #6)	1 1/2"
O	PER PLAN	6"x11"x1/2"	E	(4) 1/2" x 2'-4" Lg A36 THREADED ROD (RE NOTE #6)	1 1/2"
P	PER PLAN	10"x10"x1/2"	F	(4) 1/2" x 2'-4" Lg A36 THREADED ROD (RE NOTE #6)	1 1/2"

SHAPE (NOT TO SCALE)

 NOTES:
 1. SEE PLAN FOR ORIENTATION OF COLUMNS.
 2. ALL COLUMNS SHALL BE CONTINUOUS WITH NO SPLICES.
 3. AB LENGTH INCLUDES 4" H & 4" PROJECTION U.O.
 4. U.O. SET COLUMN BASE PLATE ON 1" GROUT TYPICAL.
 5. REFER TO SHEET S203 FOR BRACING ELEVATIONS & DETAILS.
 6. EACH AB SHALL HAVE A 3"x3"x1/2" PLATE WASHERS BOT. (IN LIEU OF HR) @ 4" PROJ. ATOP WHERE NOTED IN THE SCHED. (4"x4"x1/2" PLATE WASHER @ BOLTS TO AND LAGERS)

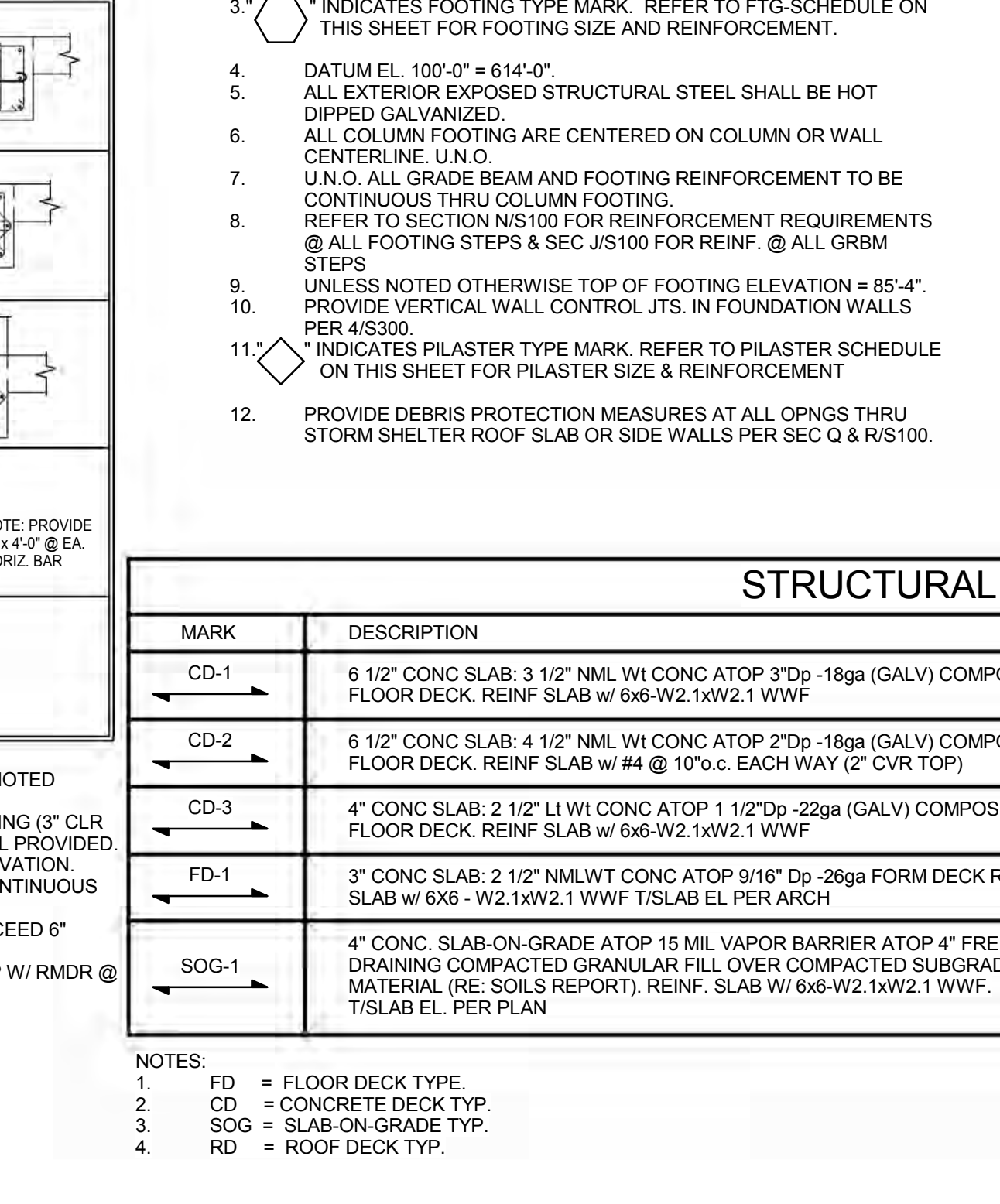
PILASTER SCHEDULE

MARK	SIZE	VERT. REINF. & TIE SPACING	SHAPE	CONCRETE (PSI):	
				3000	REBAR (KSI): 60
P1	20"x28"	(8) #7 VERT. W/ SETS OF (2) #3 TIES		(8) #8 VERT. W/ SETS OF (3) #3 TIES	
P2	28"x28"	(10) #8 VERT. W/ SETS OF (3) #3 TIES		(10) #8 VERT. W/ SETS OF (3) #3 TIES	
P3	28"x36"	(10) #8 VERT. W/ SETS OF (3) #3 TIES		(10) #8 VERT. W/ SETS OF (3) #3 TIES	
P4	20"x36"	(10) #7 VERT. W/ SETS OF (3) #3 TIES		(10) #7 VERT. W/ SETS OF (3) #3 TIES	
P5	28"x54"	(12) #8 VERT. W/ SETS OF (4) #3 TIES		(12) #8 VERT. W/ SETS OF (4) #3 TIES	
P6	28"x28"	(12) #8 VERT. W/ SETS OF (4) #3 TIES		(8) #8 VERT. W/ SETS OF (3) #3 TIES	
P7	24"x28"	(8) #7 VERT. W/ SETS OF (2) #3 TIES		(8) #7 VERT. W/ SETS OF (2) #3 TIES	

1 FOUNDATION PLAN

NOTES:
 1. REFER TO GENERAL NOTES ON SHEET S100.
 2. REFER TO COLUMN BASE PLATE SCHEDULE ON THIS SHEET.
 3. INDICATES FOOTING TYPE MARK. REFER TO FTG. SCHEDULE ON THIS SHEET FOR FOOTING SIZE AND REINFORCEMENT.
 4. DATUM EL. 100'-0" = 614'-0"
 5. ALL EXTERIOR EXPOSED STRUCTURAL STEEL SHALL BE HOT DIPPED GALVANIZED.
 6. ALL COLUMN FOOTING ARE CENTERED ON COLUMN OR WALL CENTERLINE U.O.
 7. U.O. ALL GRADE BEAM AND FOOTING REINFORCEMENT TO BE CONTINUOUS THRU COLUMN FOOTING.
 8. REFER TO SECTION 100 FOR REINFORCEMENT REQUIREMENTS @ ALL FOOTING STEPS & SEC 15100 FOR REINF. @ ALL GRBM STEPS.
 9. UNLESS NOTED OTHERWISE TOP OF FOOTING ELEVATION = 85'-4".
 10. INDICATES VERTICAL WALL CONTROL JTS. IN FOUNDATION WALLS PER #3300.
 11. INDICATES PLASTER TYPE MARK. REFER TO PLASTER SCHEDULE ON THIS SHEET FOR PLASTER SIZE & REINFORCEMENT.
 12. PROVIDE DEBRIS PROTECTION MEASURES AT ALL OPNOS THRU STORM SHELTER ROOF SLAB OR SIDE WALLS PER SEC O & R/S100.

2 STAIR No.2 FRAMING PLAN



STRUCTURAL DECK & SLAB SCHEDULE

MARK	DESCRIPTION	REINFORCING
CD-1	6 1/2" CONC. SLAB 3 1/2" MIN. W/ CONC. ATOP 2" DP - 18ga (GALV) COMPOSITE FLOOR DECK REINF. SLAB W/ #6-W2 1W/2 1 WWF	SOG-2
CD-2	6 1/2" CONC. SLAB 4 1/2" MIN. W/ CONC. ATOP 2" DP - 18ga (GALV) COMPOSITE FLOOR DECK REINF. SLAB W/ #4 @ 10" c. EACH WAY (2" CVR TOP)	RD-1
CD-3	4" CONC. SLAB 2 1/2" L1 W/ CONC. ATOP 1 1/2" DP - 22ga (GALV) COMPOSITE FLOOR DECK REINF. SLAB W/ #6-W2 1W/2 1 WWF	RD-2
FD-1	7" CONC. SLAB 2 1/2" MIN. W/ CONC. ATOP #11" DP - 29ga FORM DECK REINF. SLAB W/ #6-W2 1W/2 1 WWF T/S LAB PER ARCH	
SOG-1	4" CONC. SLAB-ON-GRADE ATOP 15 MIL VAPOR BARRIER ATOP 4" FREE-DRAINING COMPACTED GRANULAR FILL OVER COMPACTED SUBGRADE MATERIAL (RE: S205 REPORT). REINF. SLAB W/ #6-W2 1W/2 1 WWF T/S LAB EL. PER PLAN	
SOG-2	8" CONC. SLAB ON GRADE ATOP 15 MIL VAPOR BARRIER ATOP COMPACTED GRANULAR FILL SUBGRADE. REINF. SLAB W/ #5 @ 10" c. EA. WAY BOT.	
RD-1	1 1/2" DP - 22ga GALV. WIDE RIB ROOF DECK (3 SPAN CONT.) EXAMPLE VULCRAFT 158-22. PROVIDE 5/8" PUDDLE WELDS TO SUPPORT & #10 TEK-SCREW SIDE-LAP FASTENERS TO DEVELOP 300 PLF DIAPHRAGM SHEAR CAPACITY.	
RD-2	1" DP - 22ga METAL ROOF DECK. EXAMPLE VULCRAFT 10E-22 OR EQUAL. PROVIDE FASTENERS TO SUPPORT & SIDE-LAP FASTENERS AS REQUIRED FOR 250 PLF DIAPHRAGM SHEAR CAPACITY (MIN.).	

FOOTING SCHEDULE

Mark	Length	Width	Thickness	Reinforcing
3.5	3'-6"	3'-6"	1'-4"	#4 @ 6" c
3.5A	3'-6"	3'-6"	2'-6"	#4 @ 6" c
4.0	4'-0"	4'-0"	1'-4"	#4 @ 6" c
4.5	4'-6"	4'-6"	1'-4"	#4 @ 6" c
4.5A	4'-6"	4'-6"	2'-6"	#4 @ 6" c
5.0	5'-0"	5'-0"	1'-4"	#5 @ 6" c
5.5	5'-0"	5'-0"	1'-4"	#5 @ 6" c
6.5	6'-6"	6'-6"	1'-4"	#6 @ 6" c
6/12	12'-0"	6'-0"	3'-0"	#6 @ 6" c (LONG.) #4 @ 6" c (SHORT)
6A	6'-0"	6'-0"	3'-6"	#4 @ 6" c
7.0	7'-0"	7'-0"	2'-0"	#5 @ 6" c
7.5	7'-6"	7'-6"	2'-0"	#5 @ 6" c
8.0	8'-0"	8'-0"	2'-6"	#5 @ 6" c
8.5	8'-6"	8'-6"	2'-6"	#5 @ 6" c
9.0	9'-0"	9'-0"	2'-6"	#6 @ 6" c
9.5	9'-6"	9'-6"	2'-6"	#6 @ 6" c
10.0	10'-0"	10'-0"	3'-0"	#6 @ 6" c
10.5	10'-6"	10'-6"	3'-0"	#6 @ 6" c
11.5	11'-6"	11'-6"	3'-0"	#6 @ 6" c
12.5	12'-6"	12'-6"	3'-6"	#7 @ 6" c
13.0	13'-0"	13'-0"	3'-6"	#7 @ 6" c
13.5	13'-6"	13'-6"	3'-6"	#7 @ 6" c

NOTES:
 1. ** INDICATES FOOTING SHALL INCLUDE ADDITIONAL #4 @ 12" c. EA. WAY TOP MATT. EXTERIOR FOOTINGS OR FOOTING AT GRADE BEAM SHALL MATCH GRADE BEAM BOTTOM WITH 4 STANCHIONS TO SUPPORT MATTS.
 2. PROVIDE REINFORCING PER SCHEDULE EACH WAY IN TOP OF FTG. AT ALL MOMENT FRAME AND BRACED BAY COLUMNS. CENTER FOOTINGS ON COLUMNS AND/OR WALL CENTER LINES PER PLAN UNLESS NOTED OTHERWISE (U.O.).

ISSUE DATE: MARCH 16TH, 2016
 JOB NO: 1311
 DRAWN BY: JFG
 CHECKED BY: JLV
 REVISION
 DATE DESCRIPTION

FOUNDATION PLAN
S201
 ISSUE FOR REVIEW