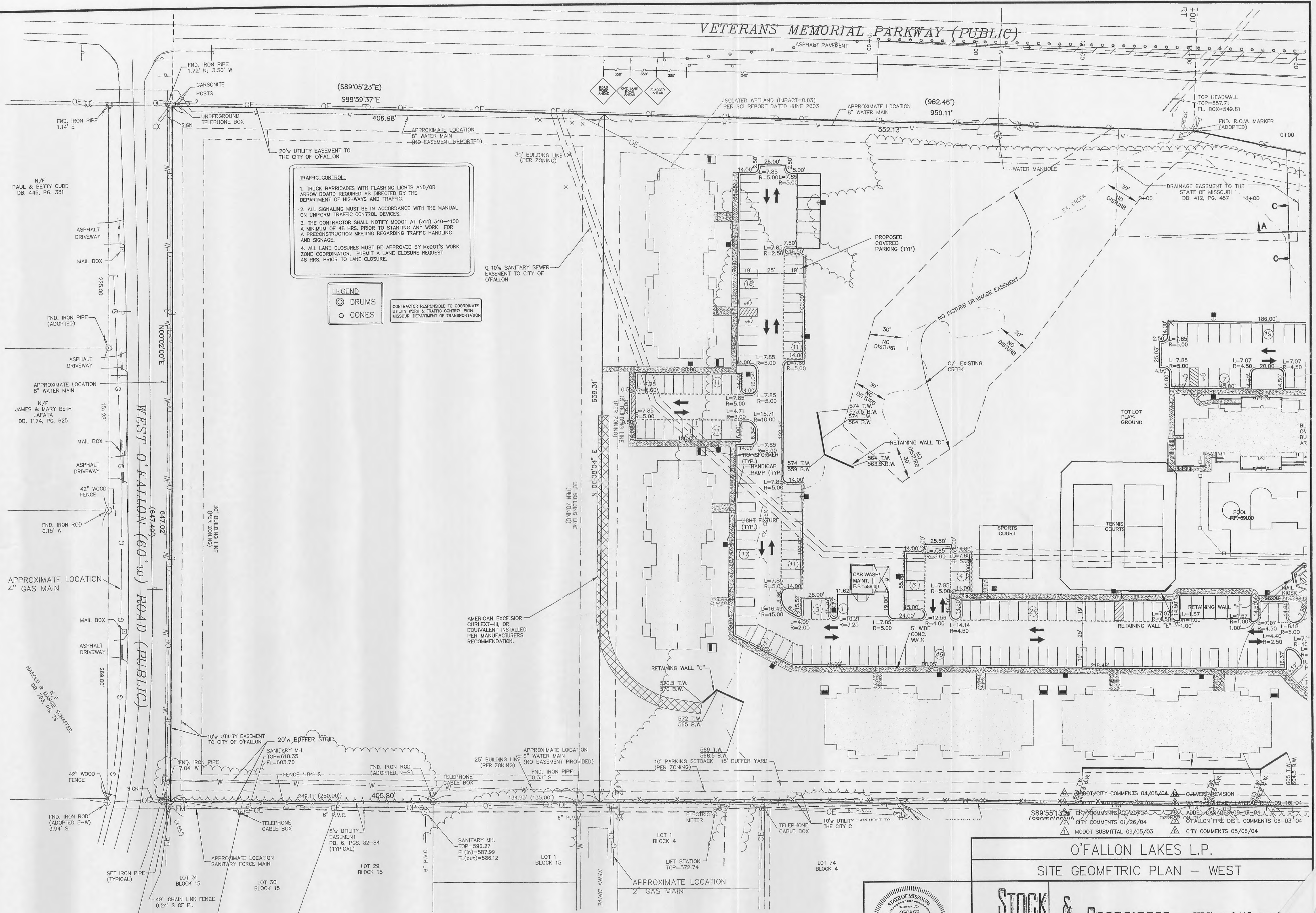


VETERANS MEMORIAL PARKWAY (PUBLIC)



**TRAFFIC CONTROL:**

1. TRUCK BARRICADES WITH FLASHING LIGHTS AND/OR ARROW BOARD REQUIRED AS DIRECTED BY THE DEPARTMENT OF HIGHWAYS AND TRAFFIC.
2. ALL SIGNALING MUST BE IN ACCORDANCE WITH THE MANUAL ON UNIFORM TRAFFIC CONTROL DEVICES.
3. THE CONTRACTOR SHALL NOTIFY MODOT AT (314) 340-4100 A MINIMUM OF 48 HRS. PRIOR TO STARTING ANY WORK FOR A PRECONSTRUCTION MEETING REGARDING TRAFFIC HANDLING AND SIGNAGE.
4. ALL LANE CLOSURES MUST BE APPROVED BY MODOT'S WORK ZONE COORDINATOR. SUBMIT A LANE CLOSURE REQUEST 48 HRS. PRIOR TO LANE CLOSURE.

**LEGEND**

- ⊙ DRUMS
- CONES

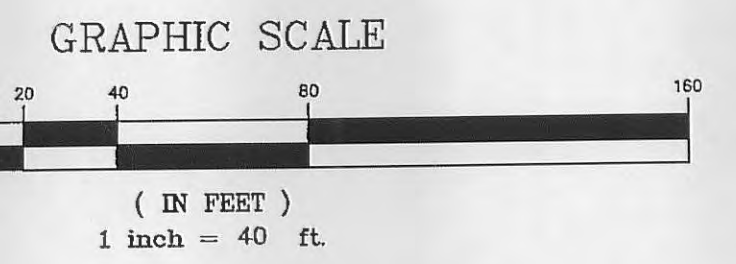
CONTRACTOR RESPONSIBLE TO COORDINATE UTILITY WORK & TRAFFIC CONTROL WITH MISSOURI DEPARTMENT OF TRANSPORTATION

N/F PAUL & BETTY CUDE DB. 446, PG. 381

N/F JAMES & MARY BETH LAFATA DB. 1174, PG. 625

N/F HAROLD & WILHELMINE SCHAFER DB. 1174, PG. 625

WEST O'FALLON ROAD (60'-W) ROAD (PUBLIC)



O'FALLON LAKES L.P.  
SITE GEOMETRIC PLAN - WEST

**STOCK & ASSOCIATES**  
Consulting Engineers, Inc.

257 Chesterfield Business  
St. Louis, MO 63005  
PH. (636) 530-9100  
FAX (636) 530-9130  
e-mail: general@stock.com  
Web: www.stock.com

STATE OF MISSOURI  
GEORGE MICHAEL STOCK  
NUMBER E-25116  
PROFESSIONAL ENGINEER  
OCT 14 2004

PLANNING AND ZONING FILE NUMBER 2203.01  
GEORGE M. STOCK E-25116

DRAWN BY: R.E.S.	DATE: 08/27/03	CHECKED BY: G.M.S.	DATE: 08/27/03	JOB NUMBER: 202-2927	SHEET: C
------------------	----------------	--------------------	----------------	----------------------	----------