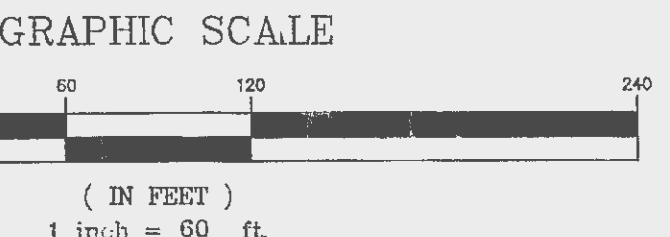
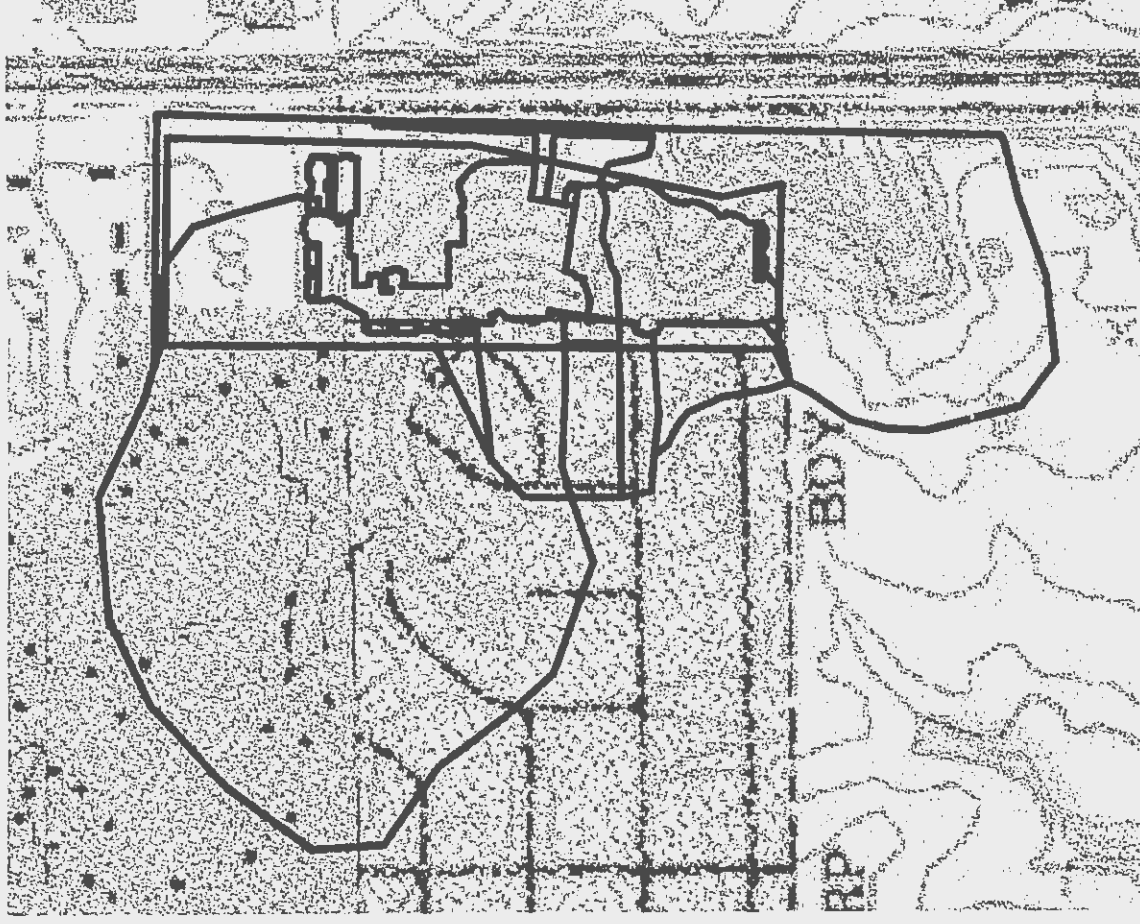


VETERANS MEMORIAL PARKWAY (PUBLIC)

PROPOSED OUTLOT  
6.00 Acres  
(DETENTION WILL BE REQUIRED  
AT TIME OF DEVELOPMENT)

SECTION A-A  
 $Q_1 = 22.50$  CFS  
 Slope = 0.001 %  
 $n = 0.035$   
 $A = 12.25$  sq. ft.  
 $R^{4/3} = 0.48$   
 $S^{1/2} = 0.0394$   
 $V.P. = 37.15$  ft.  
 $V = 11.64$  ft/s  
 CURB & GUTTER INSTALLED PER MANUFACTURERS RECOMMENDATION.

BUILDING AREA TOTAL:	2.63 AC.
PAVEMENT/SIDWALK AREA TOTAL:	6.12 AC.
PERVIOUS AREA TOTAL:	11.44 AC.
ONSITE AREA TOTAL:	20.19 AC.



- ▲ MODOT/CITY COMMENTS 04/08/04
- ▲ CITY COMMENTS 03/24/04
- ▲ CITY COMMENTS 02/20/04
- ▲ CITY COMMENTS 01/28/04
- ▲ MODOT SUBMITTAL 02/02/03
- ▲ CULVERT REVISION
- ▲ WATER/SANITARY LATERAL REV. 08-10-04
- ▲ ADDED GARAGES 08-17-04
- ▲ O'FALLON FIRE DIST. COMMENTS 08-03-04
- ▲ CITY COMMENTS 03/08/04

O'FALLON LAKES L.P.  
DRAINAGE AREA PLAN

**STOCK & ASSOCIATES**  
 Consulting Engineers, Inc.

257 Chesterfield Business Parkway  
 St. Louis, MO 63005  
 PH. (636) 530-9100  
 FAX (636) 530-9130  
 e-mail: general@stockassoc.com  
 Web: www.stockassoc.com

