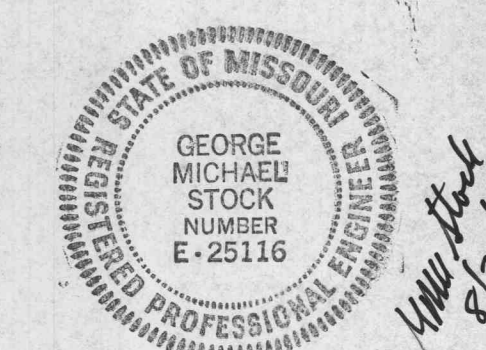


9 Sunnen Drive, Suite 110
 St. Louis, Missouri 63143
 Fax 314.646.0100
 Telephone 314.646.0400

Date: _____
 Contact: P.J.B.
 Produced By: P.J.B.
 Reviewed By: G.M.S.

Rev.	Description	Date
01	Progress Set 2	08/18/98
02	CURTAIN WALL STRUCTURAL & MECHANICAL STEEL PAVING PRECIP. PACKAGE REVISED SEVERE	08/18/98



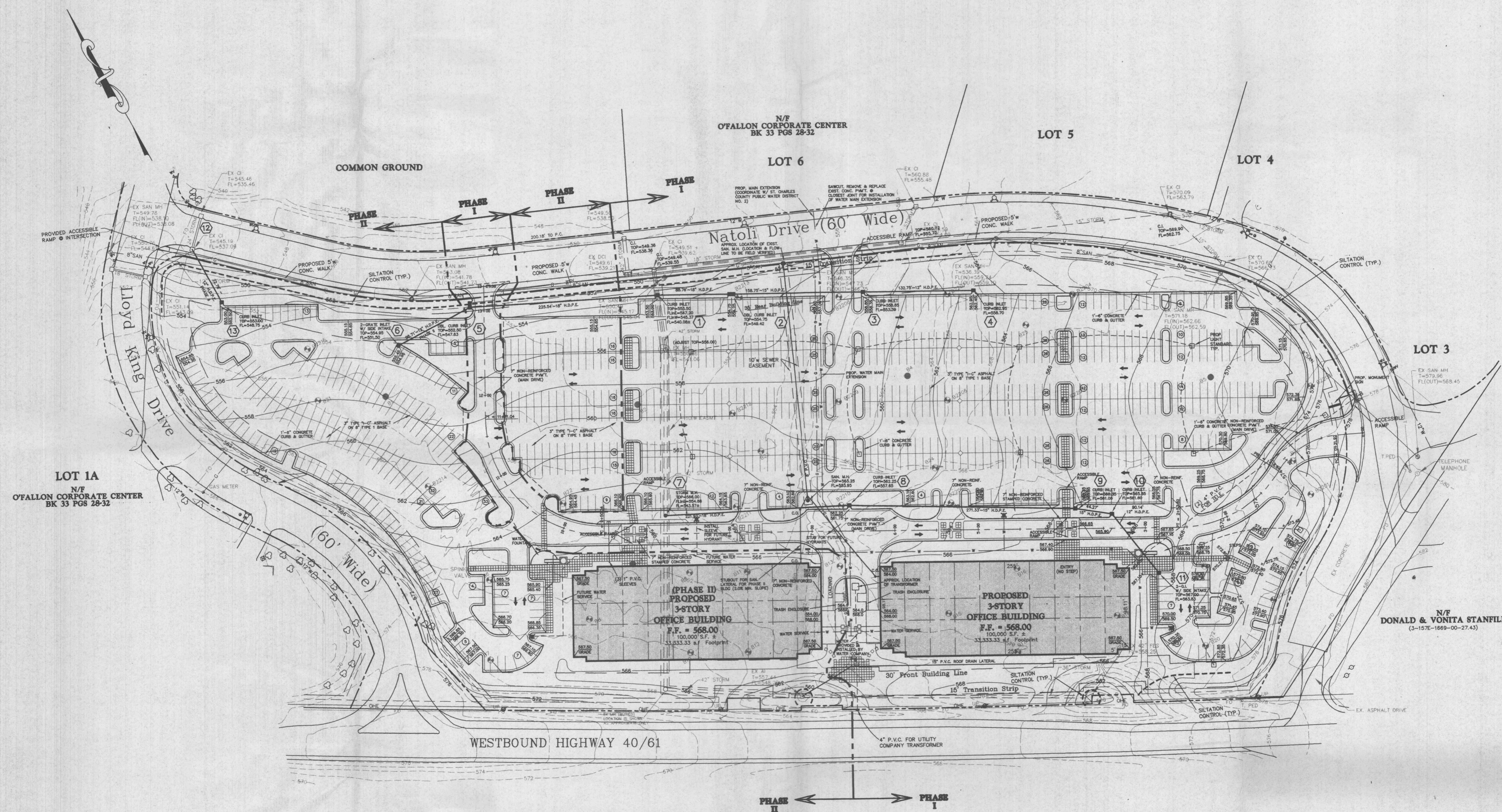
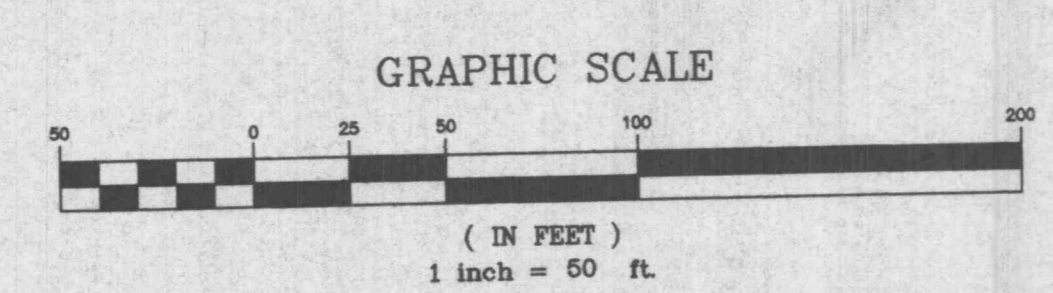
General Contractor:
CLAYCO CONSTRUCTION
 Structural Engineer:
MONEALY-BUMBERY ENGINEERING
 Civil Engineer:
STOCK & ASSOCIATES
 HVAC Design Built:
C & R Mechanical Company
 Plumbing Design Built:
 Electrical Design Built:
Aschinger Electric
 Fire Protection:

A NEW OFFICE BUILDING
O'FALLON CORPORATE CENTER
 PHASE ONE
 O'FALLON MISSOURI



ROLMAR FAMILIE
 LIMITED
 PARTNERSHIP

gray
 Interiors + Architecture + Planning



LOT 1A
 N/F
 O'FALLON CORPORATE CENTER
 BK 33 PGS 29-32

N/F
 O'FALLON CORPORATE CENTER
 BK 33 PGS 29-32

N/F
 DONALD & VONITA STANFILL
 (3-157E-1669-00-27.43)

D:\MARKETING\RESIDENTIAL\PLANS\O'FALLON\O'FALLON PHASE ONE.dwg, Mod Aug 19 07:30:12 1998, CONG-C