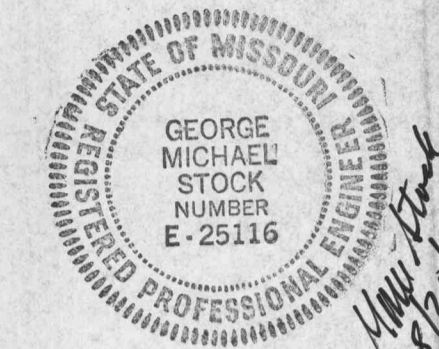


9 Stamen Drive, Suite 110
 St. Louis, Missouri 63143
 Fax 314.646.0100
 Telephone 314.646.0400

Date: _____
 Contact: P.J.B.
 Produced By: P.J.B.
 Reviewed By: G.M.B.
 Rev. Description Date
 Program Set 2 02/14/98
 CURTAIN WALL/STRUCTURAL
 & MISCELLANEOUS STEEL
 PAVING FINISH PHASE



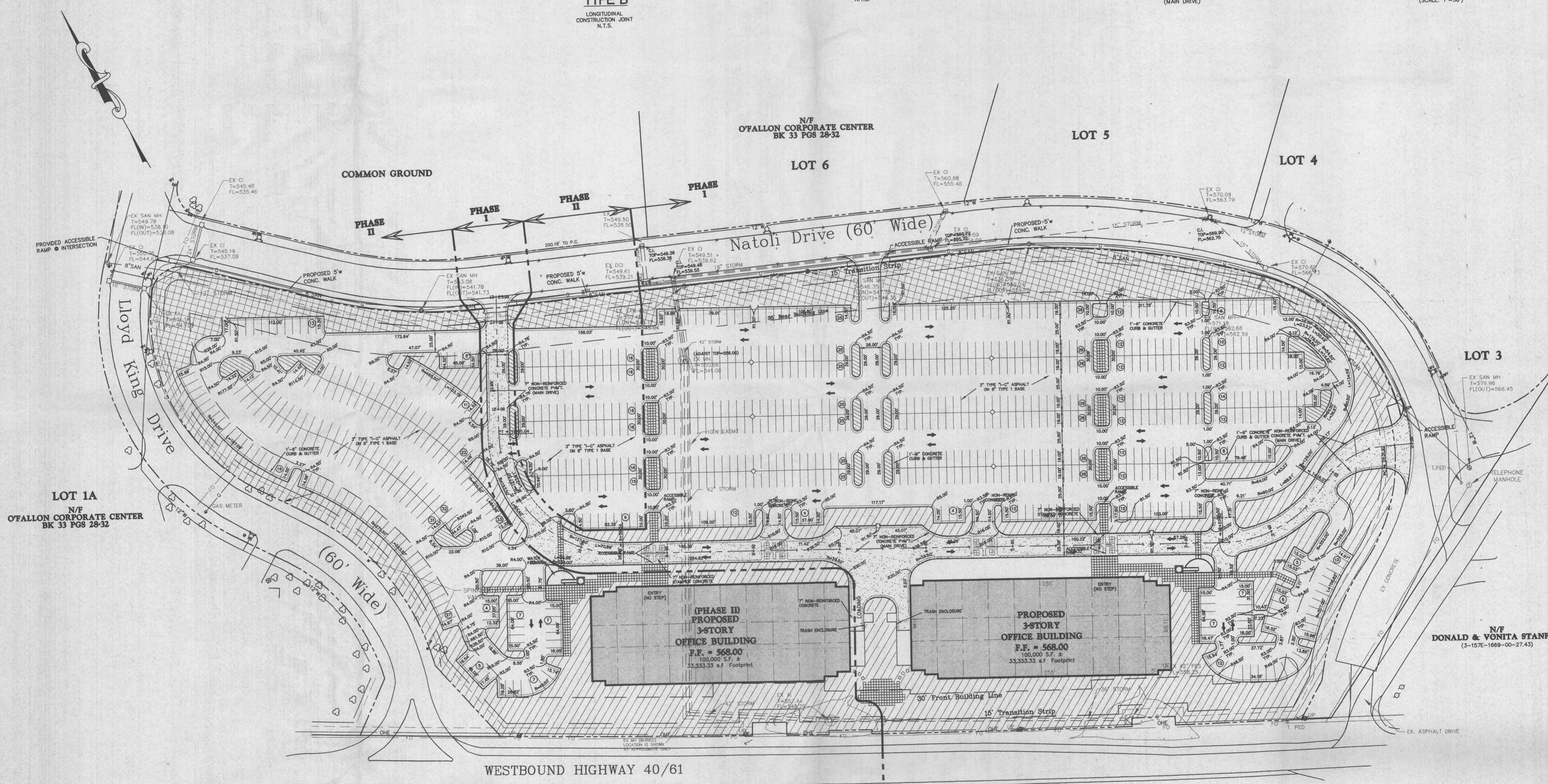
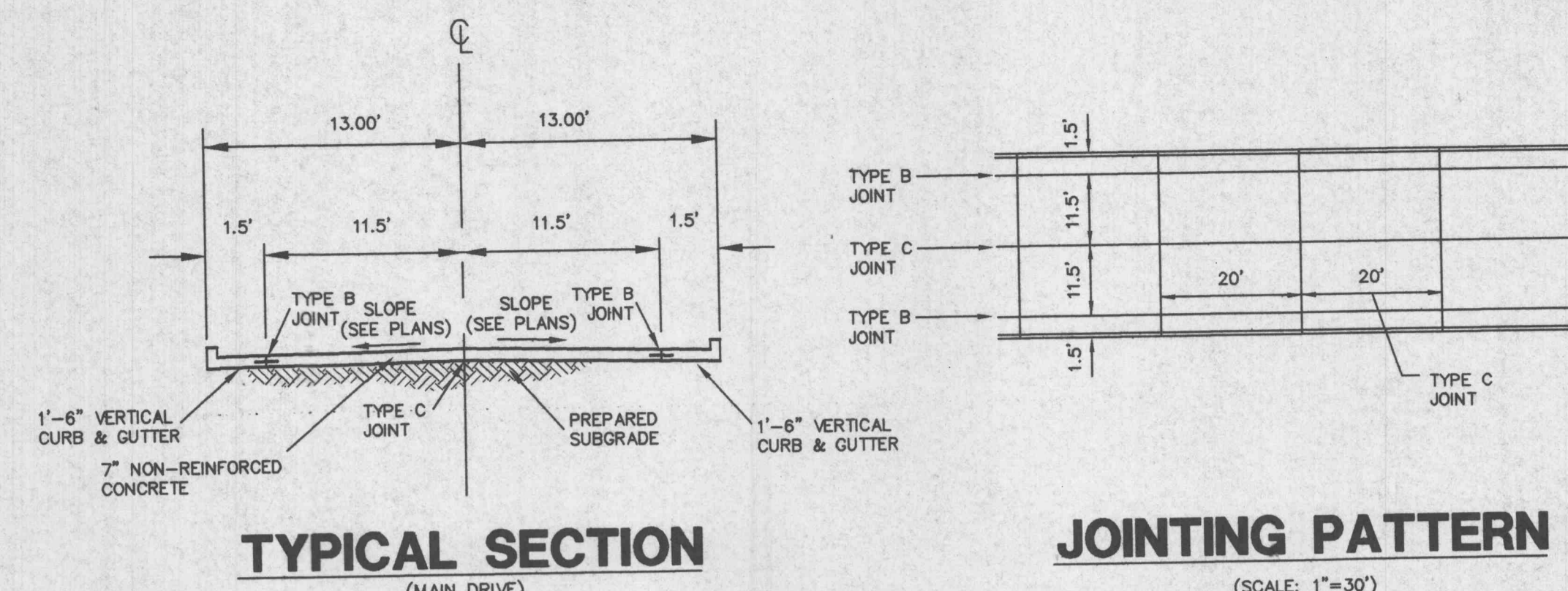
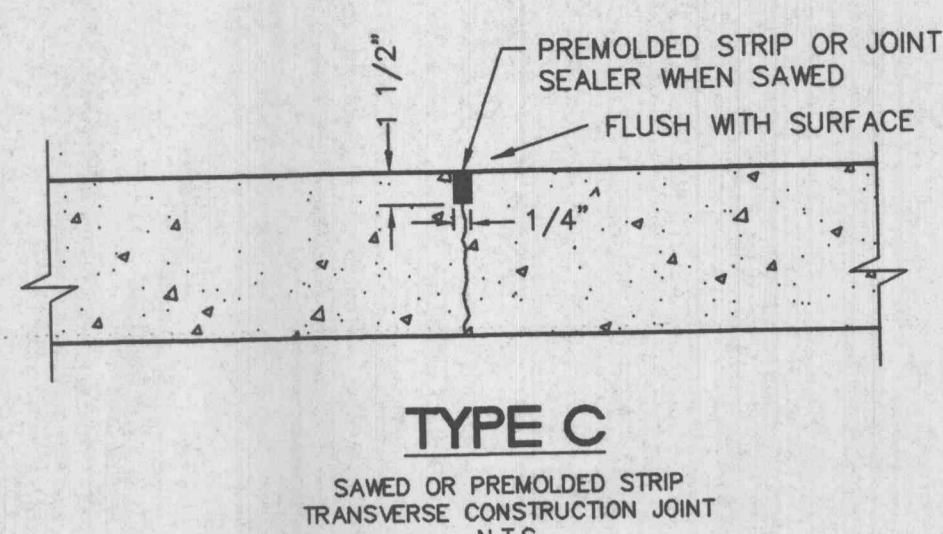
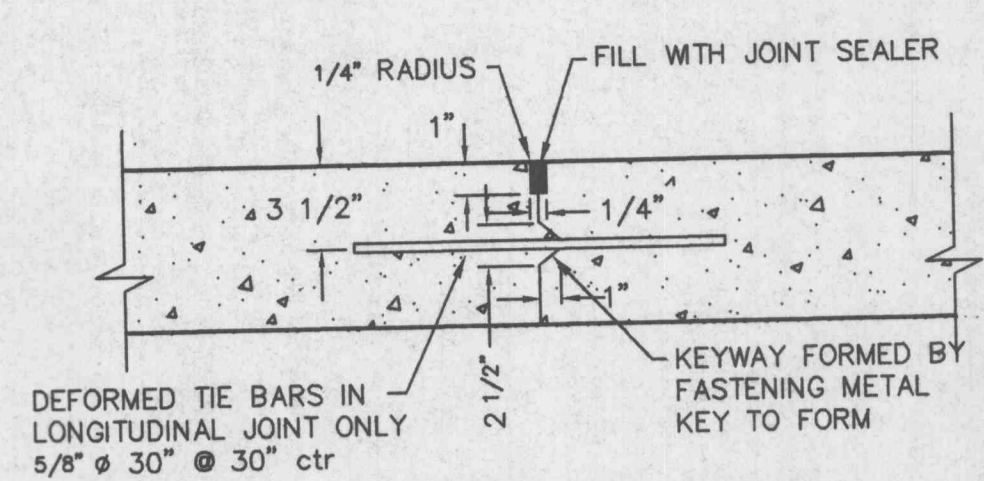
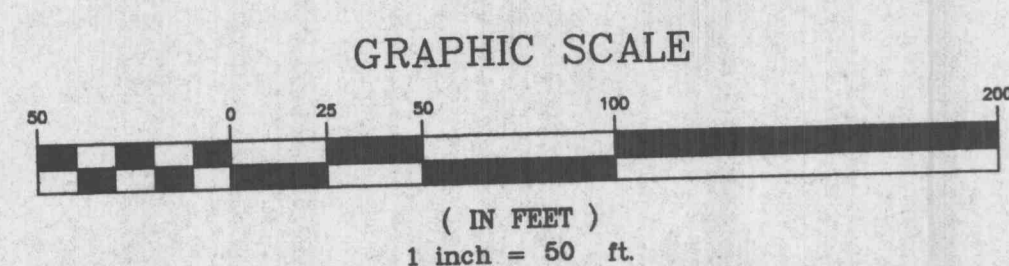
General Contractor: CLAYCO CONSTRUCTION
 Structural Engineer: MONEALY-SUMMBERRY ENGINEERING
 Civil Engineer: STOOK & ASSOCIATES
 HVAC Design Build: C & R Mechanical Company
 Plumbing Design Build: _____
 Electrical Design Build: Aschinger Electric
 Fire Protection: _____

A NEW OFFICE BUILDING
O'FALLON CORPORATE CENTER
 PHASE ONE
 O'FALLON MISSOURI



ROLMAR FAMILIE
 LIMITED
 PARTNERSHIP

gray
 Interiors + Architecture + Planning



PHASE II ← → PHASE I

