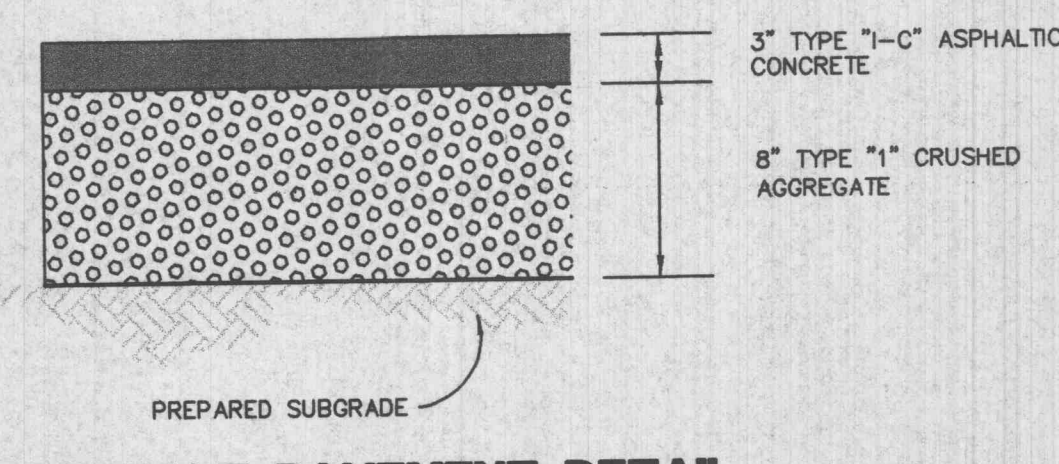
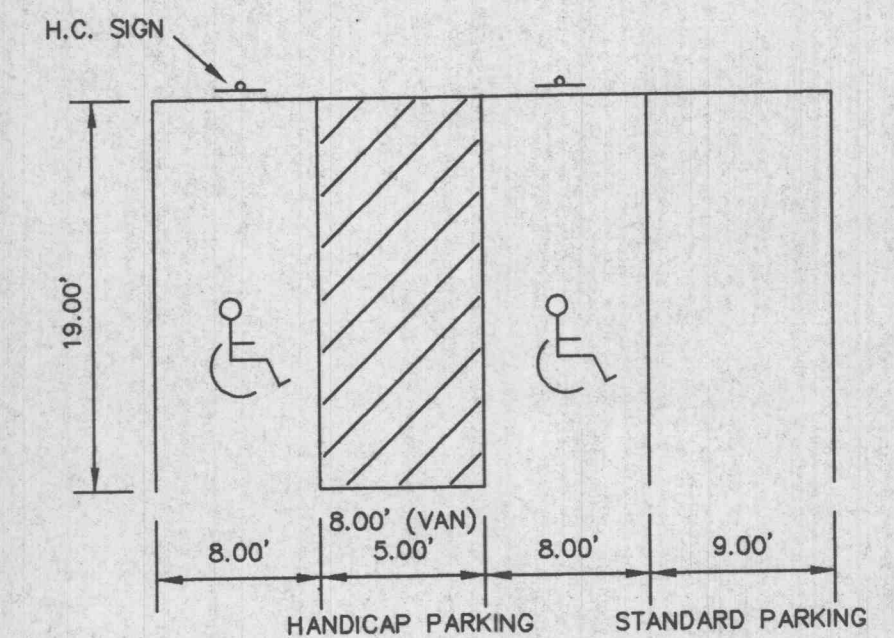


CURB AND PAVEMENT DETAIL
(FOR USE ON-SITE)
(n.t.s.)

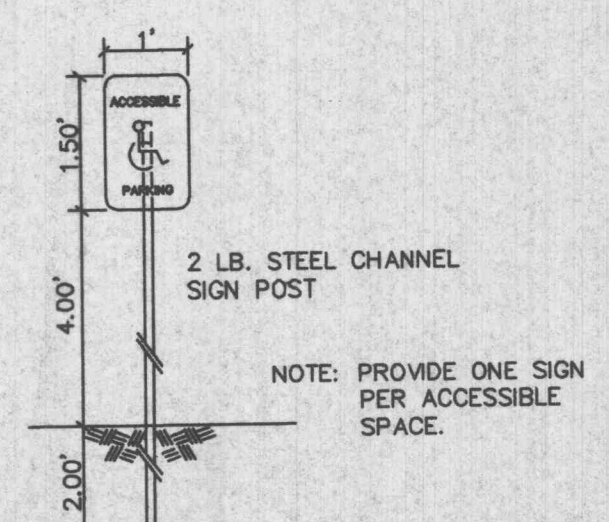
- NOTES:
1. ALL CONCRETE SHALL BE MIN. FC=3000 P.S.I. (UNLESS OTHERWISE NOTED)
 2. ANY UNSUITABLE SOIL (AS DETERMINED BY SOILS ENGINEER) BELOW STRUCTURE SHALL BE REMOVED AND REPLACED WITH SELECT EARTHEN MATERIAL COMPACTED IN PLACE WITH VIBRATORY TAMPER.
 3. ALL EXPOSED CONCRETE EDGES TO HAVE 3/4" CHAMFER.
 4. DIMENSIONS SHOWN ARE TO BACK OF CURB.



ASPHALT PAVEMENT DETAIL

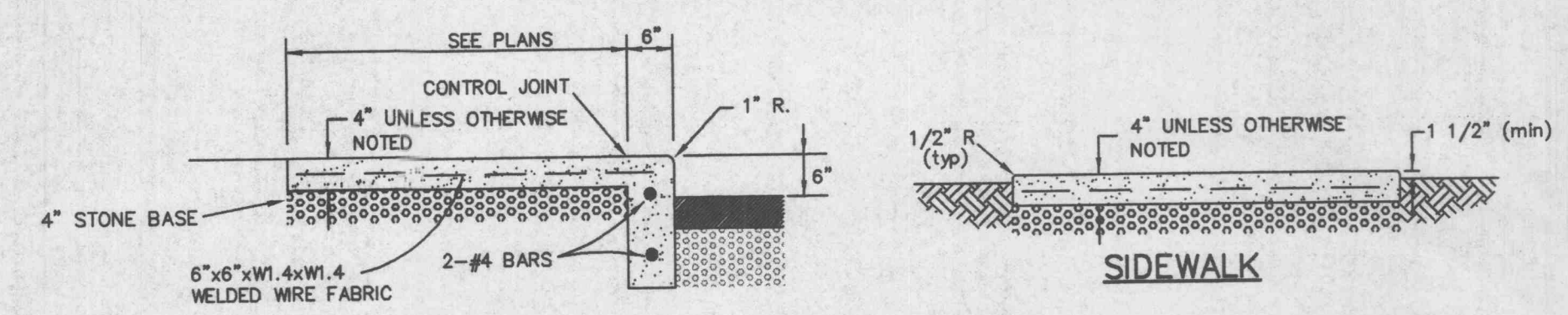


TYPICAL PARKING STALLS

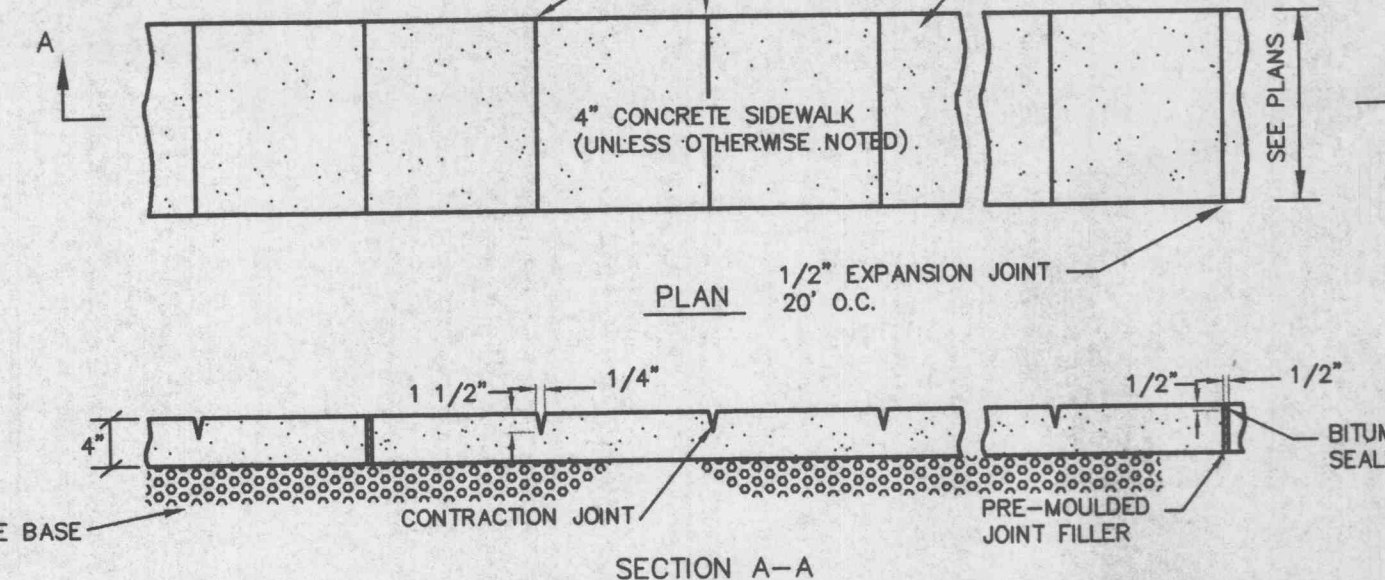


ACCESSIBLE PARKING DETAIL
(n.t.s.)

CENTERLINE PROFILE ENTRANCE DRIVE



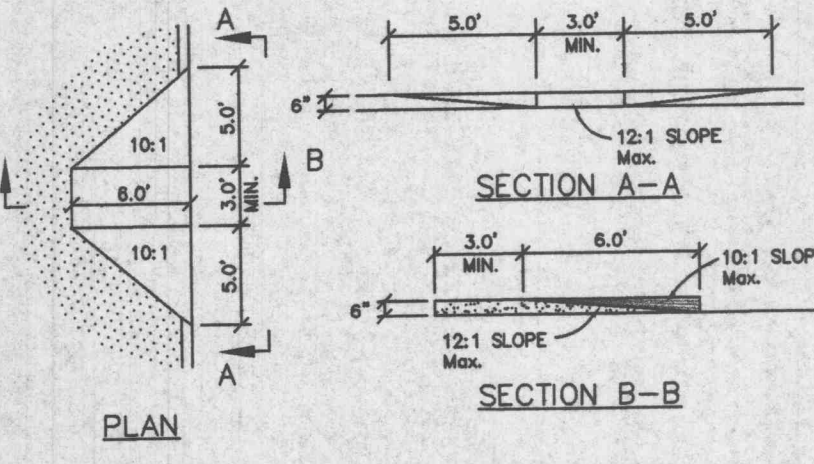
INTEGRAL SIDEWALK/CURB



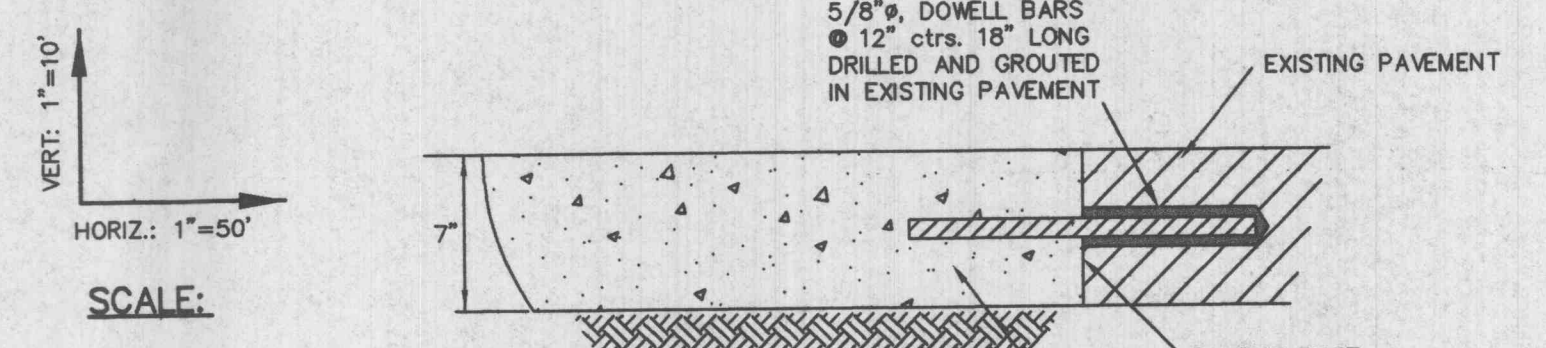
DETAIL OF TYPICAL CONCRETE SIDEWALK



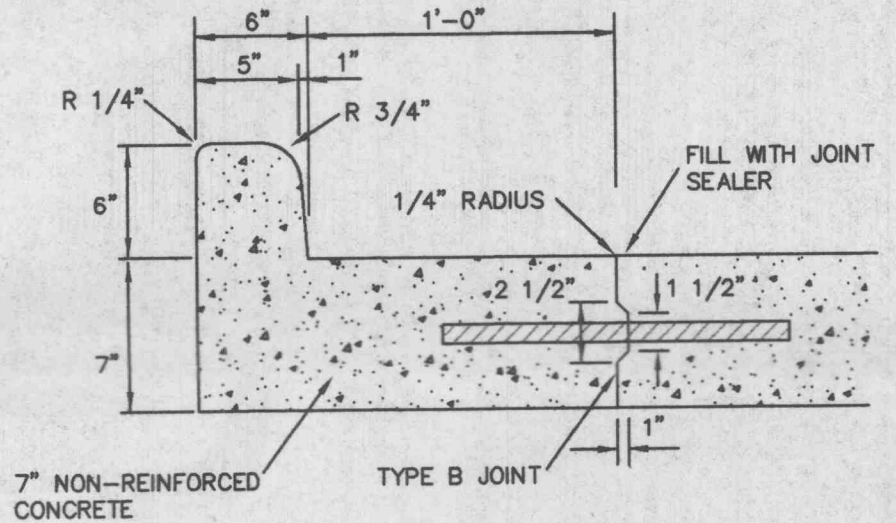
ACCESSIBLE PAINTED DETAIL



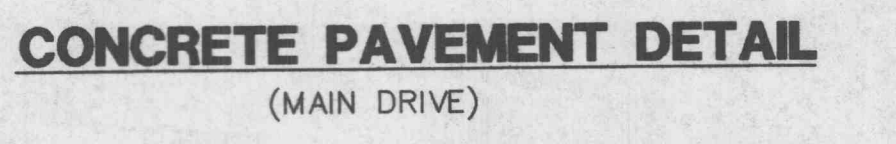
HANDICAP RAMP DETAIL
(n.t.s.)



DOWELLED PAVEMENT
(LOCATED @ ENTRANCE)



VERTICAL CURB AND GUTTER
(GUTTER AT MAIN DRIVE)

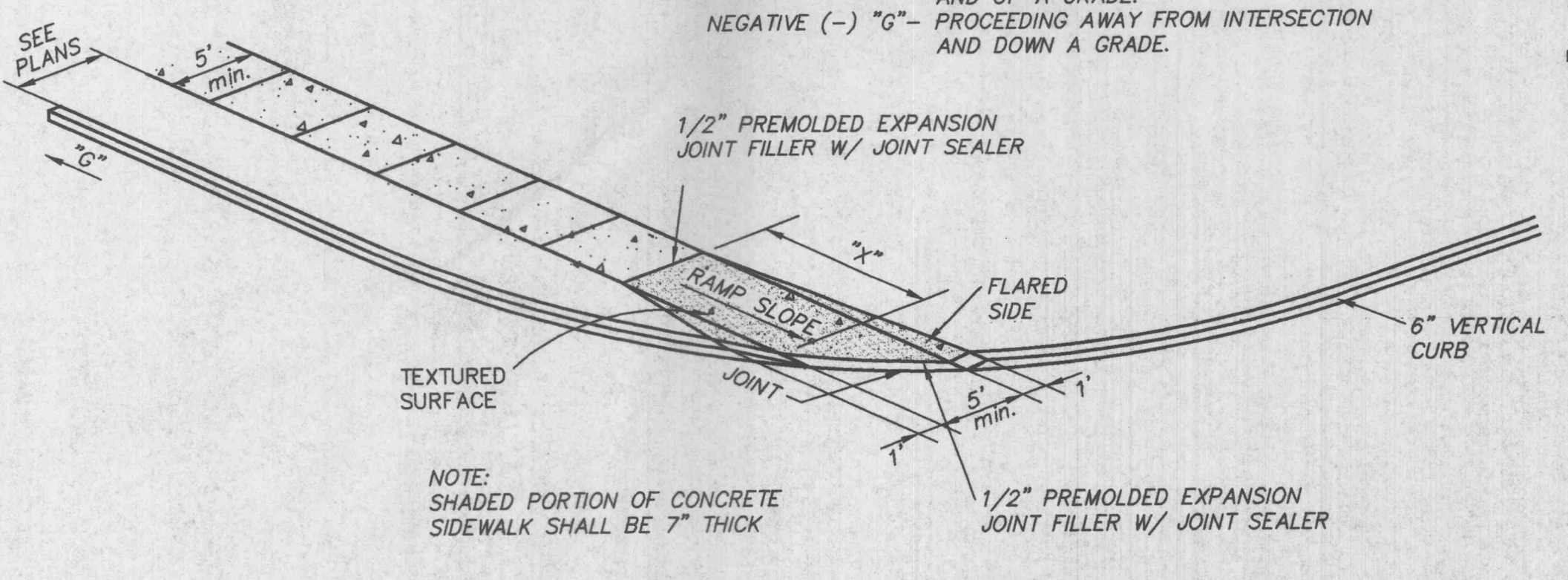


CONCRETE PAVEMENT DETAIL
(MAIN DRIVE)

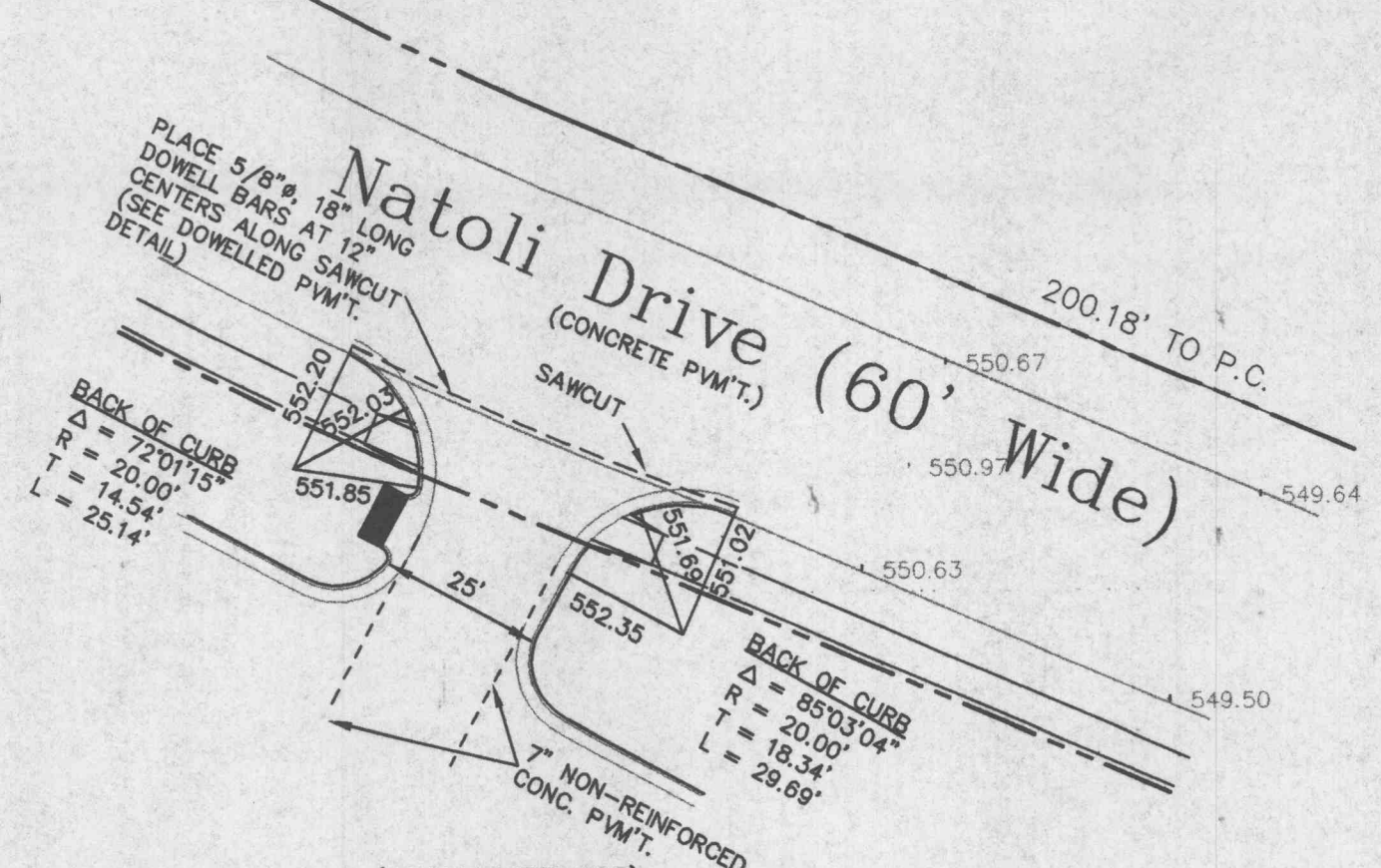
1. DO NOT SCALE DRAWING. FOLLOW DIMENSIONS.
2. SIDEWALKS AND SIDEWALK CURB RAMPS SHALL BE CONSTRUCTED IN ACCORDANCE WITH THESE DETAILS AND THE CURRENT APPROVED "AMERICANS WITH DISABILITIES ACT ACCESSIBILITY GUIDELINES" (ADAAG).
3. MAXIMUM SIDEWALK CROSS SLOPE 0.02'/FT.

"G" GRADE ALONG CURB (%)	"X" MIN. LENGTH OF RAMP SLOPE (L.F.)
NEGATIVE (-) VALUES	6
0 TO +1	7
+1.01 TO +2	8
+2.01 TO +3	10
+3.01 TO +4	12
GREATER THAN +4	15

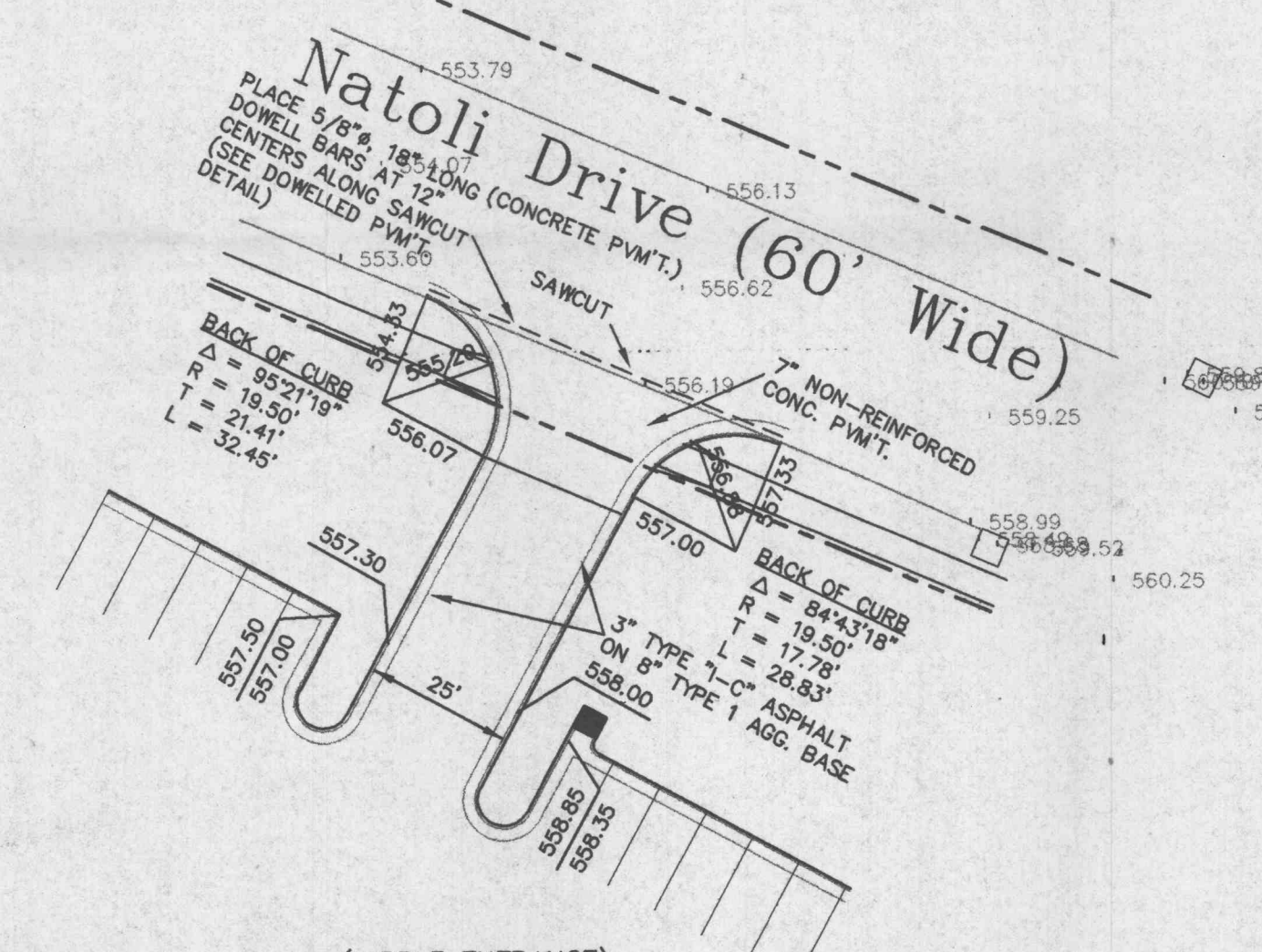
NOTE: POSITIVE (+) "G" - PROCEEDING AWAY FROM INTERSECTION AND UP A GRADE.
NEGATIVE (-) "G" - PROCEEDING AWAY FROM INTERSECTION AND DOWN A GRADE.



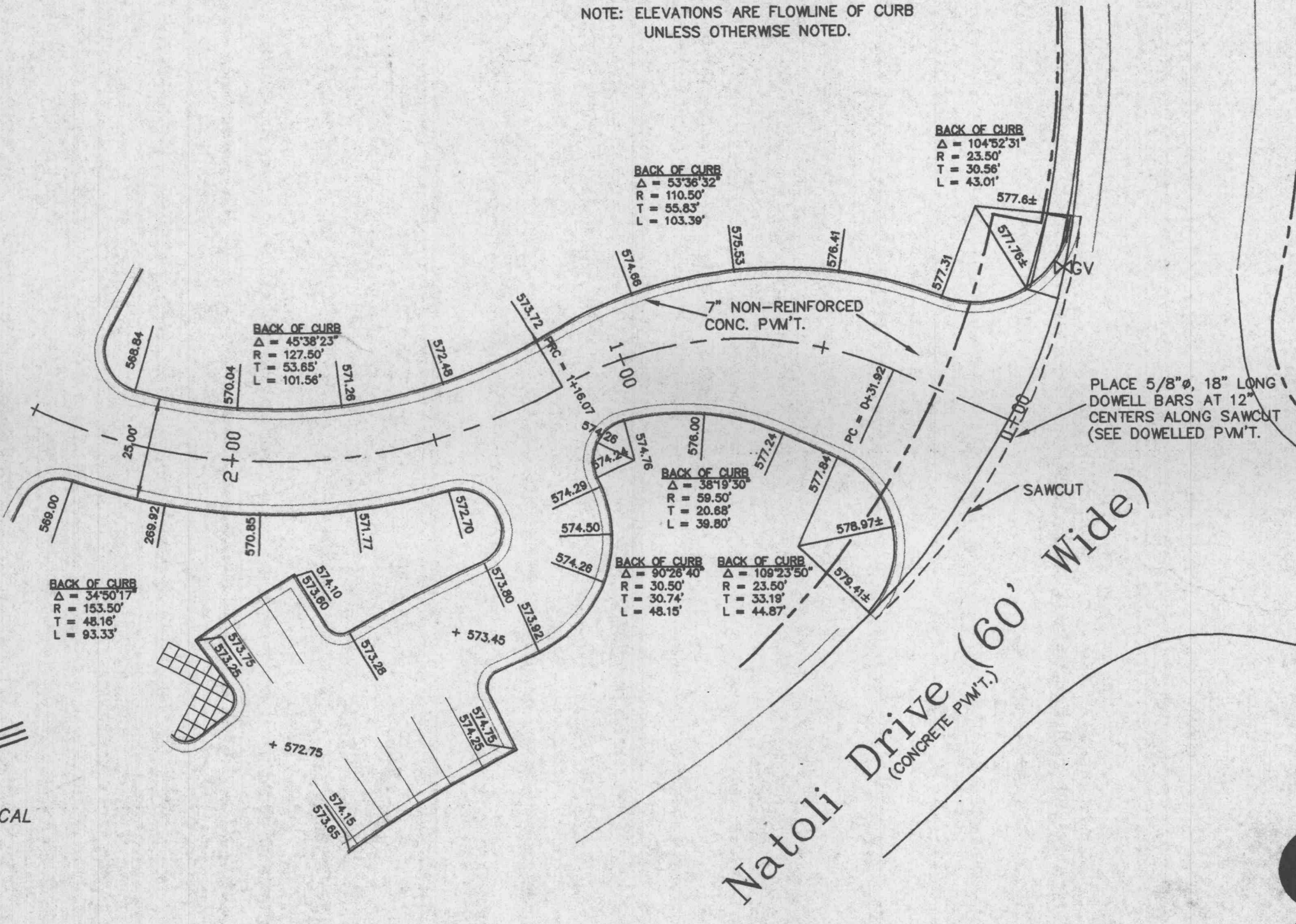
STRAIGHT CURB RAMPS



ENTRANCE WARPING
(WEST ENTRANCE)



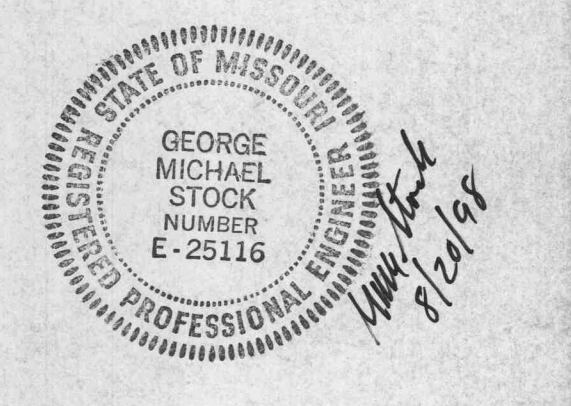
ENTRANCE WARPING
(MIDDLE ENTRANCE)



ENTRANCE WARPING
(EAST ENTRANCE)

GRAY DESIGN
© Copyright 1998, Gray Design Group, Inc.
9 Sunnyside Drive, Suite 110
St. Louis, Missouri 63143
Fax 314.646.0100
Telephone 314.646.0400

Date: _____
Contract: P.J.C.
Produced By: P.J.C.
Reviewed By: G.M.S.
Rev. Description Date
Progress Set 2 08/14/98
CUSTOM VALUATION & MISCELLANEOUS STEEL / PAINTS REVISION PACKAGE



General Contractor: CLAYCO CONSTRUCTION
Structural Engineer: MCNEALY-SUMMERY ENGINEERING
Civil Engineer: STOCK & ASSOCIATES
HVAC Design Build: C & R Mechanical Company
Plumbing Design Build: _____
Electrical Design Build: Aechinger Electric
Fire Protection: _____

O'FALLON CORPORATE CENTER
A NEW OFFICE BUILDING
PHASE ONE
O'FALLON MISSOURI



ROLMAR FAMILIE LIMITED PARTNERSHIP

gray
Interiors + Architecture + Planning