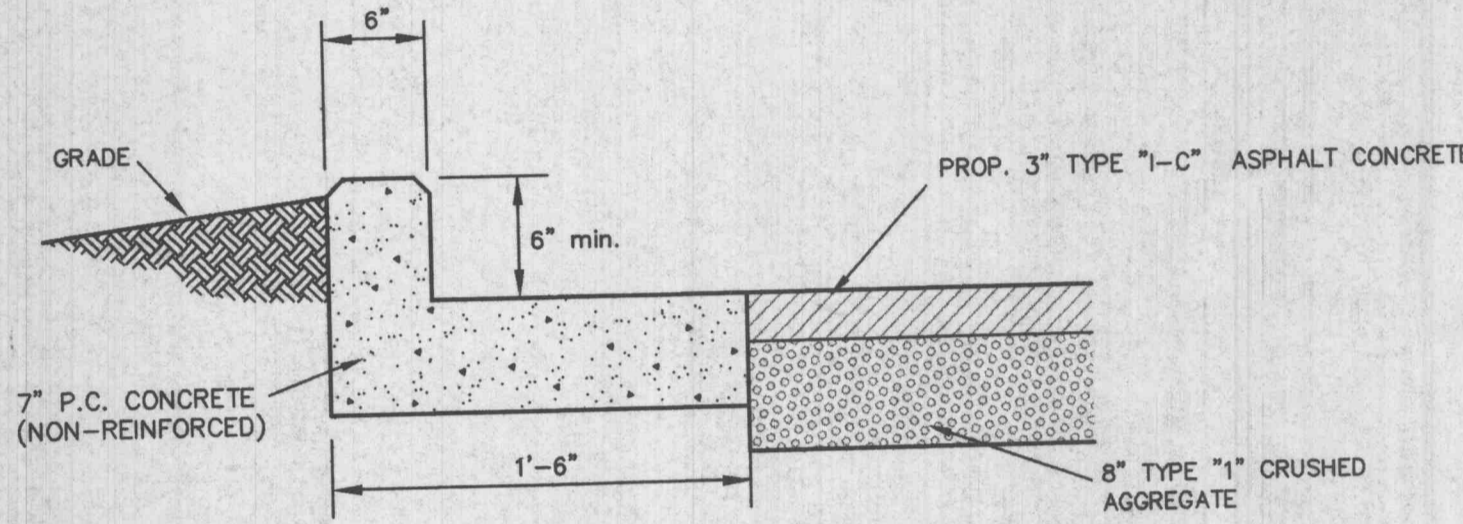
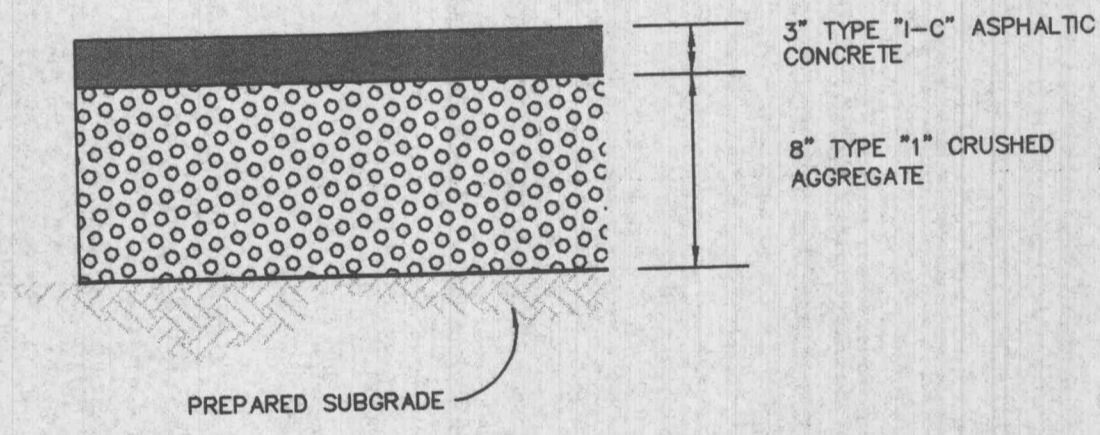


CENTERLINE PROFILE ENTRANCE DRIVE

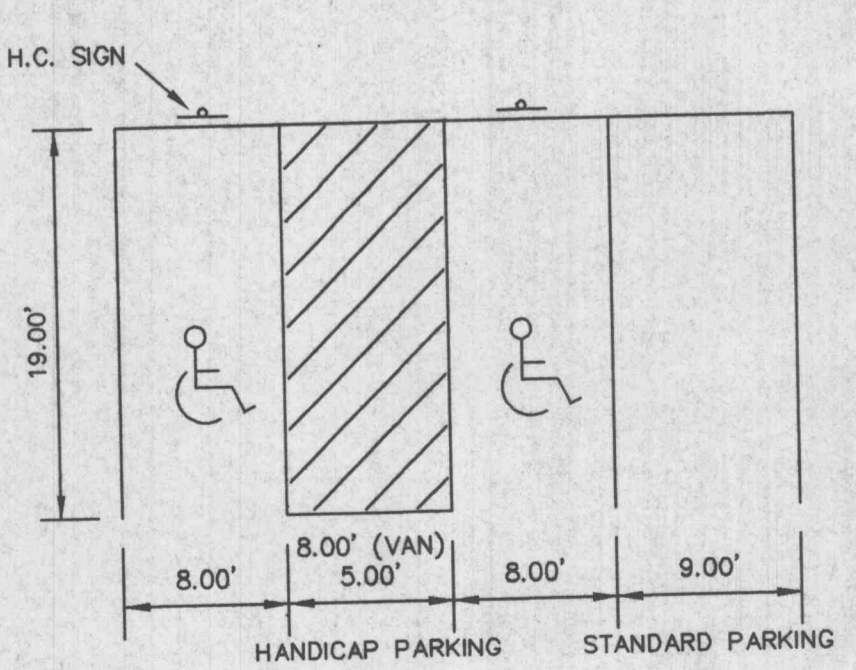


CURB AND PAVEMENT DETAIL
(FOR USE ON-SITE)
(n.t.s.)

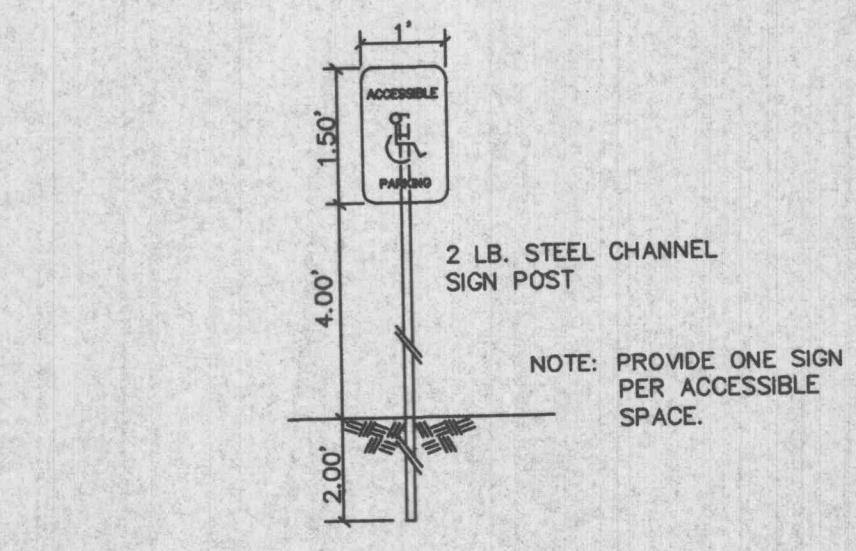
- NOTES:
1. ALL CONCRETE SHALL BE MIN. FC=3000 P.S.I. (UNLESS OTHERWISE NOTED)
 2. ANY UNSUITABLE SOIL (AS DETERMINED BY SOILS ENGINEER) BELOW STRUCTURE SHALL BE REMOVED AND REPLACED WITH SELECT EARTHEN MATERIAL COMPACTED IN PLACE WITH VIBRATORY TAMPER.
 3. ALL EXPOSED CONCRETE EDGES TO HAVE 3/4" CHAMFER.
 4. DIMENSIONS SHOWN ARE TO BACK OF CURB.



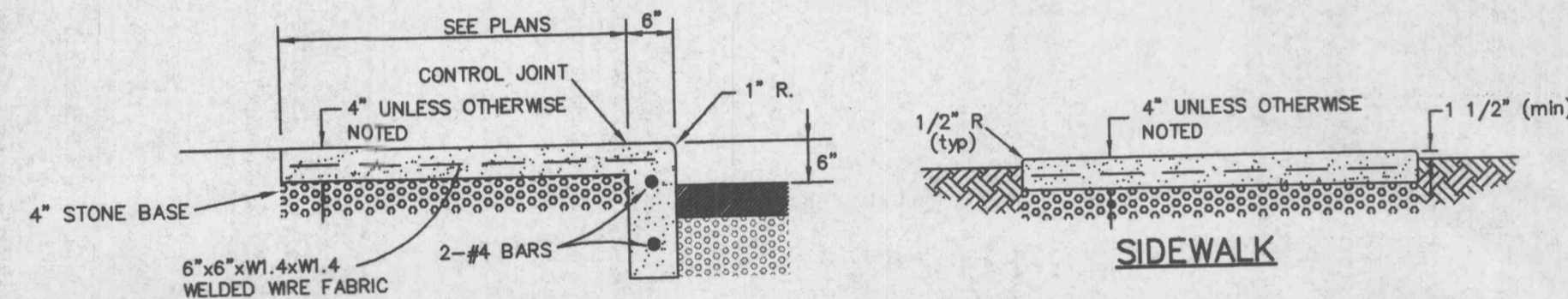
ASPHALT PAVEMENT DETAIL



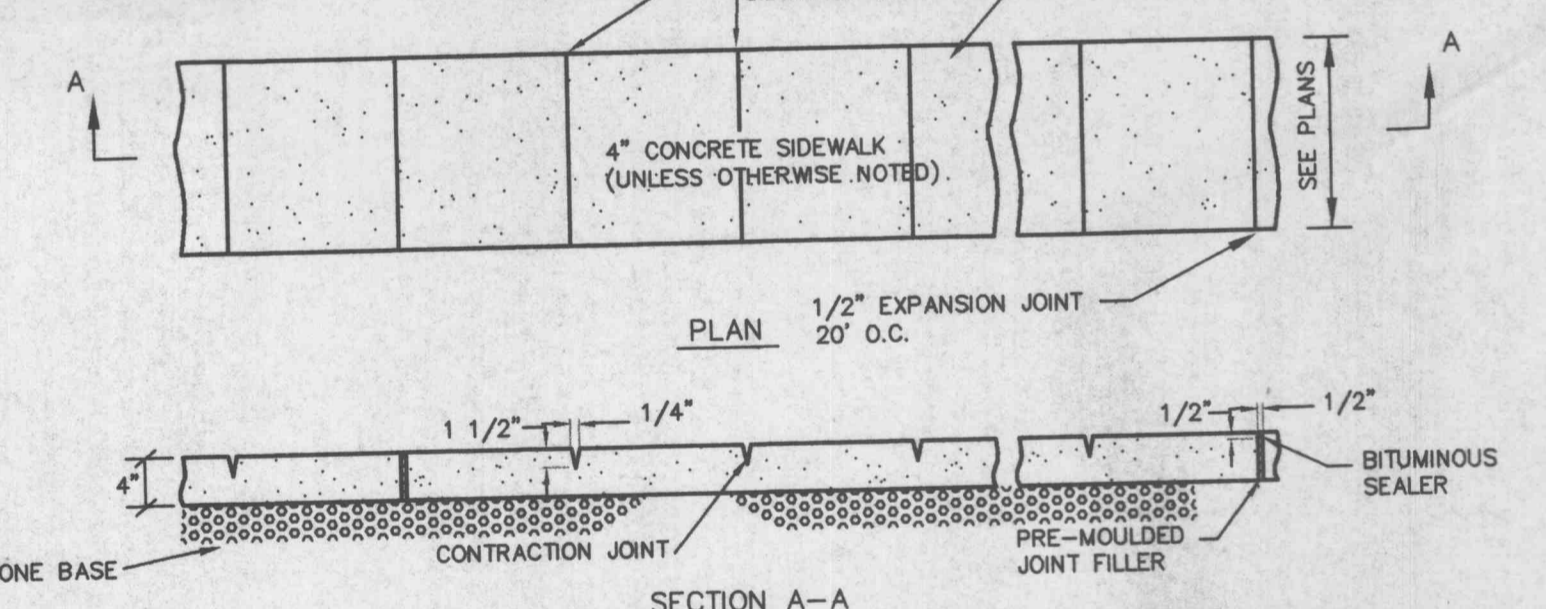
TYPICAL PARKING STALLS



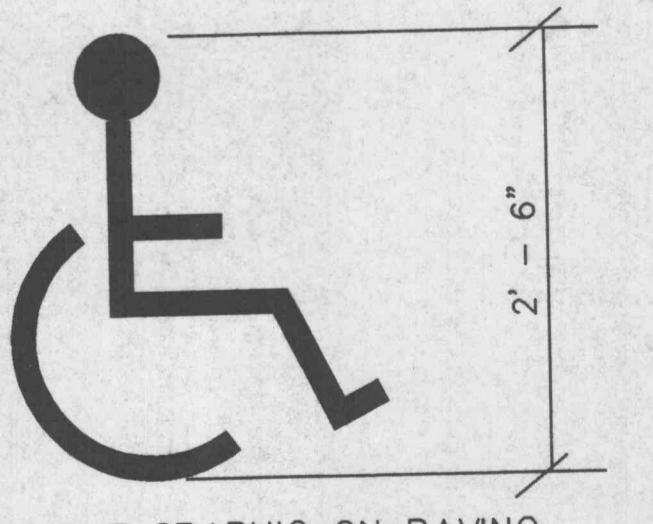
ACCESSIBLE PARKING DETAIL
(n.t.s.)



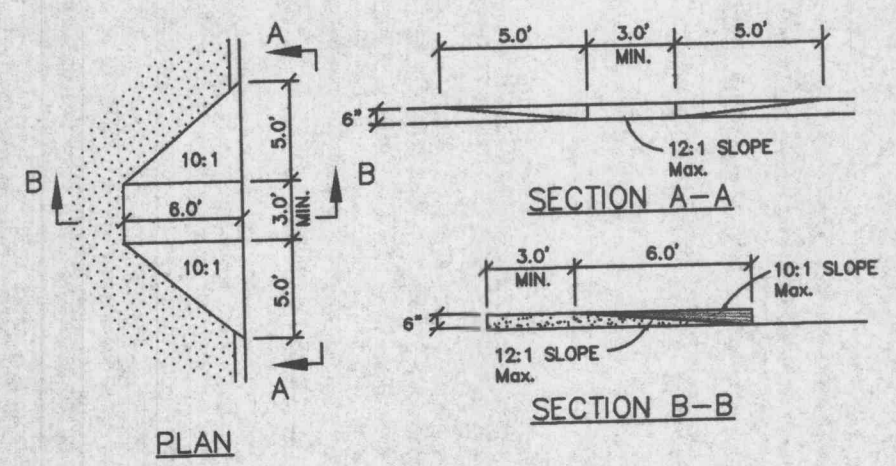
INTEGRAL SIDEWALK/CURB



DETAIL OF TYPICAL CONCRETE SIDEWALK



ACCESSIBLE PAINTED DETAIL

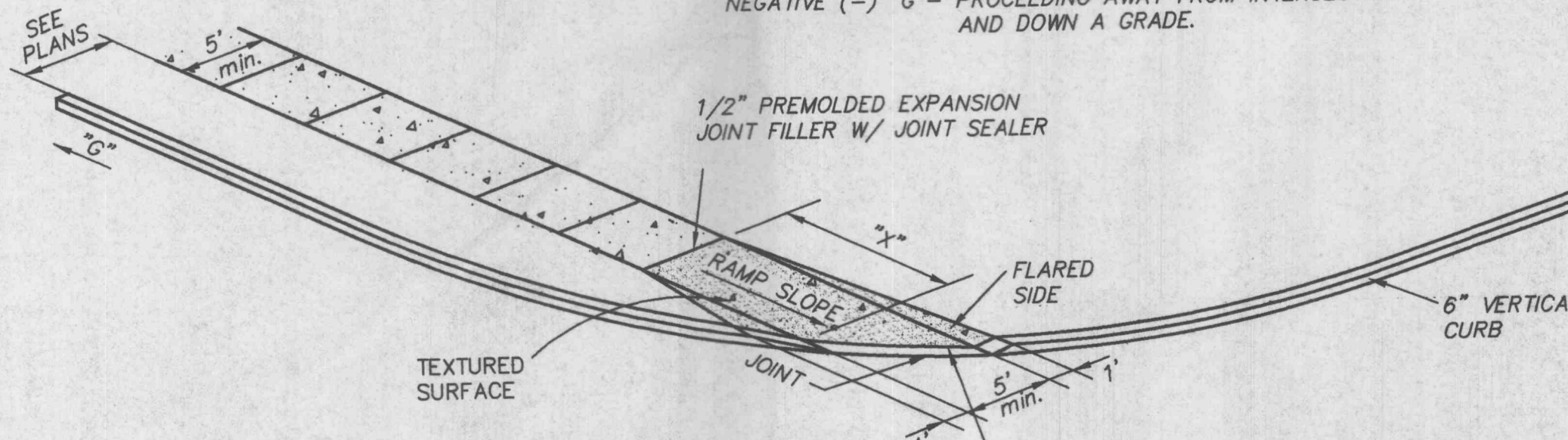


HANDICAP RAMP DETAIL
(n.t.s.)

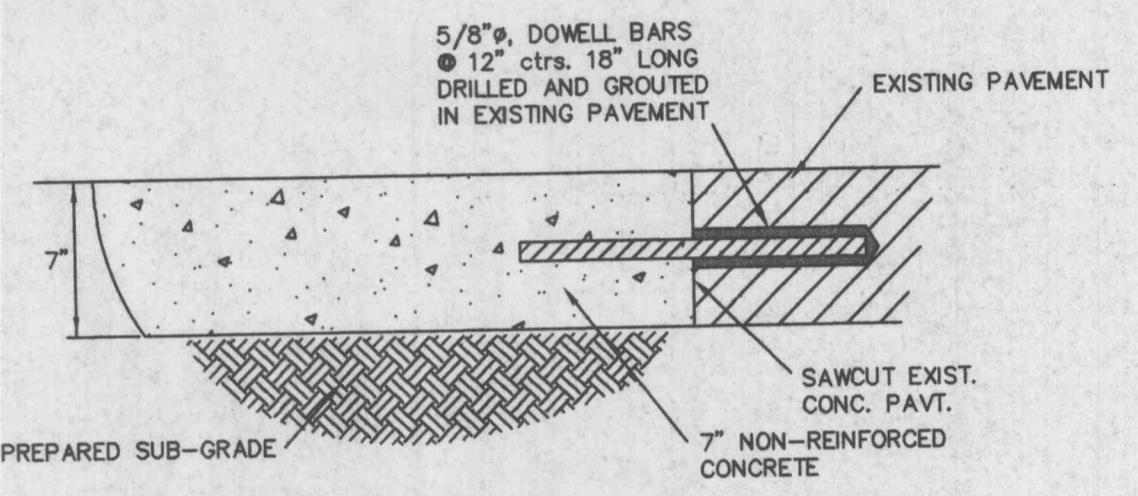
1. DO NOT SCALE DRAWING. FOLLOW DIMENSIONS.
2. SIDEWALKS AND SIDEWALK CURB RAMPS SHALL BE CONSTRUCTED IN ACCORDANCE WITH THESE DETAILS AND THE CURRENT APPROVED "AMERICANS WITH DISABILITIES ACT ACCESSIBILITY GUIDELINES" (ADAAG).
3. MAXIMUM SIDEWALK CROSS SLOPE 0.02'/FT.

"G" GRADE ALONG CURB (%)	"X" MIN. LENGTH OF RAMP SLOPE (L.F.)
NEGATIVE (-) VALUES	6
0 TO +1	7
+1.01 TO +2	8
+2.01 TO +3	10
+3.01 TO +4	12
GREATER THAN +4	15

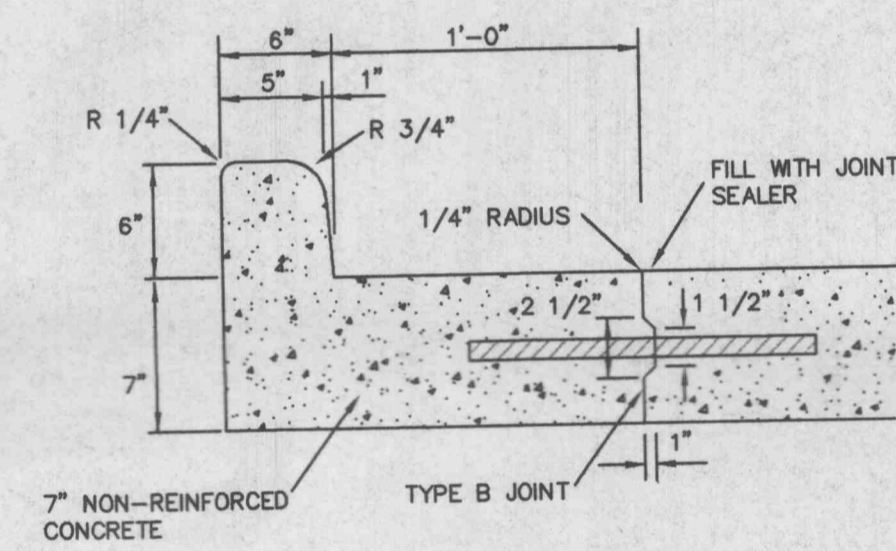
NOTE: POSITIVE (+) "G" - PROCEEDING AWAY FROM INTERSECTION AND UP A GRADE.
NEGATIVE (-) "G" - PROCEEDING AWAY FROM INTERSECTION AND DOWN A GRADE.



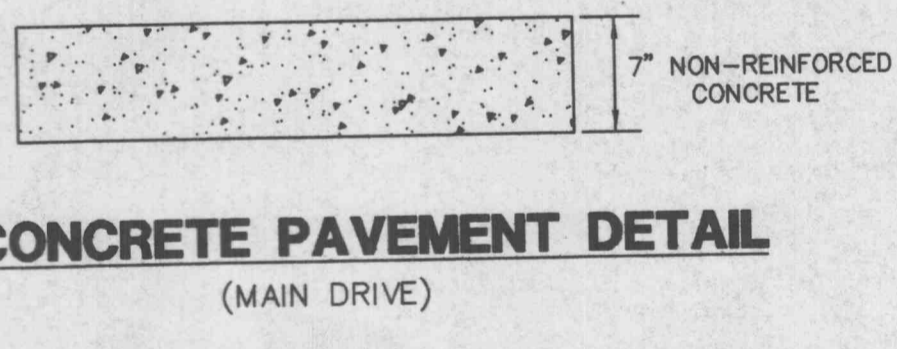
STRAIGHT CURB RAMPS



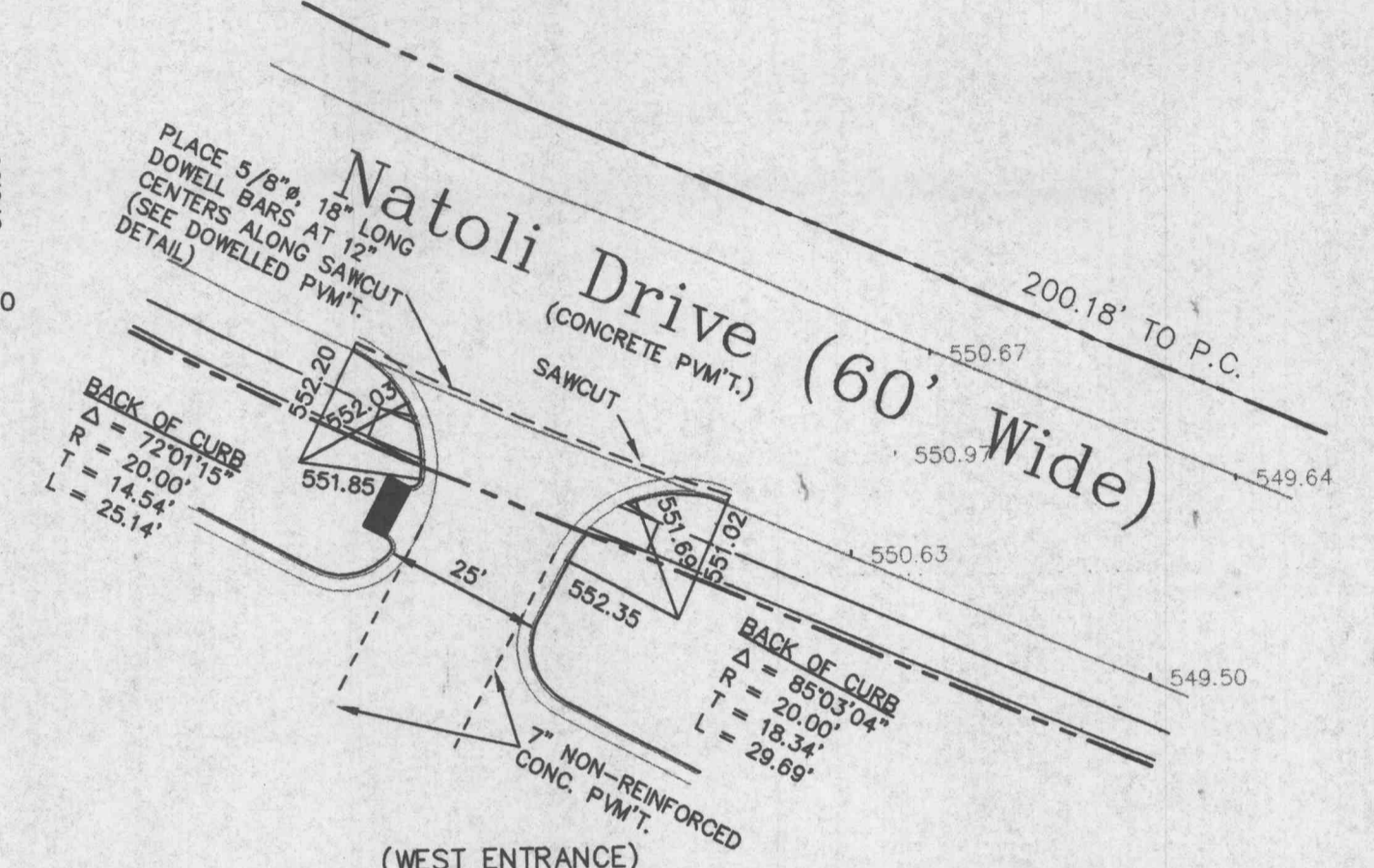
DOWELLED PAVEMENT
(LOCATED @ ENTRANCE)



VERTICAL CURB AND GUTTER
(GUTTER AT MAIN DRIVE)

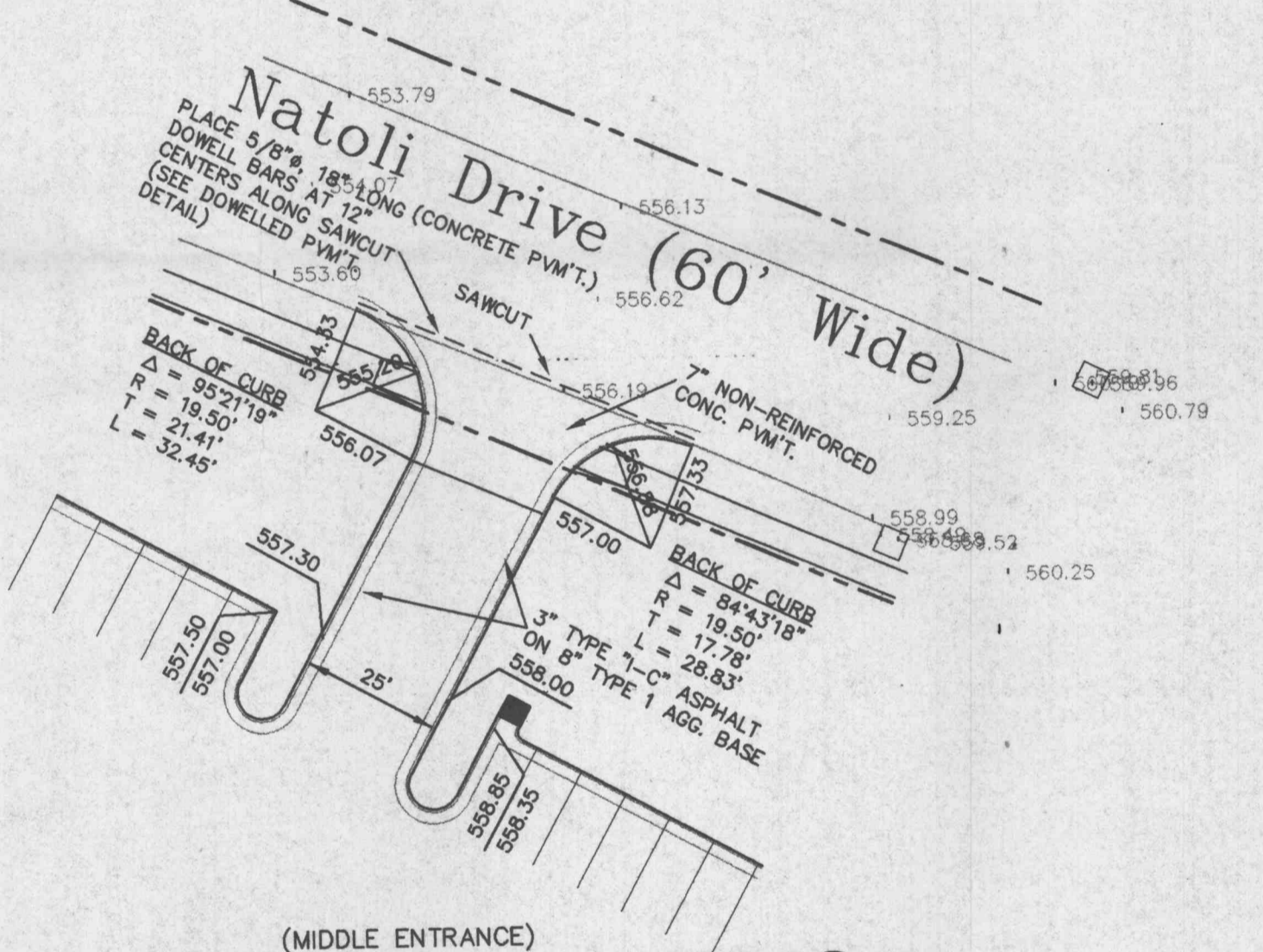


CONCRETE PAVEMENT DETAIL
(MAIN DRIVE)



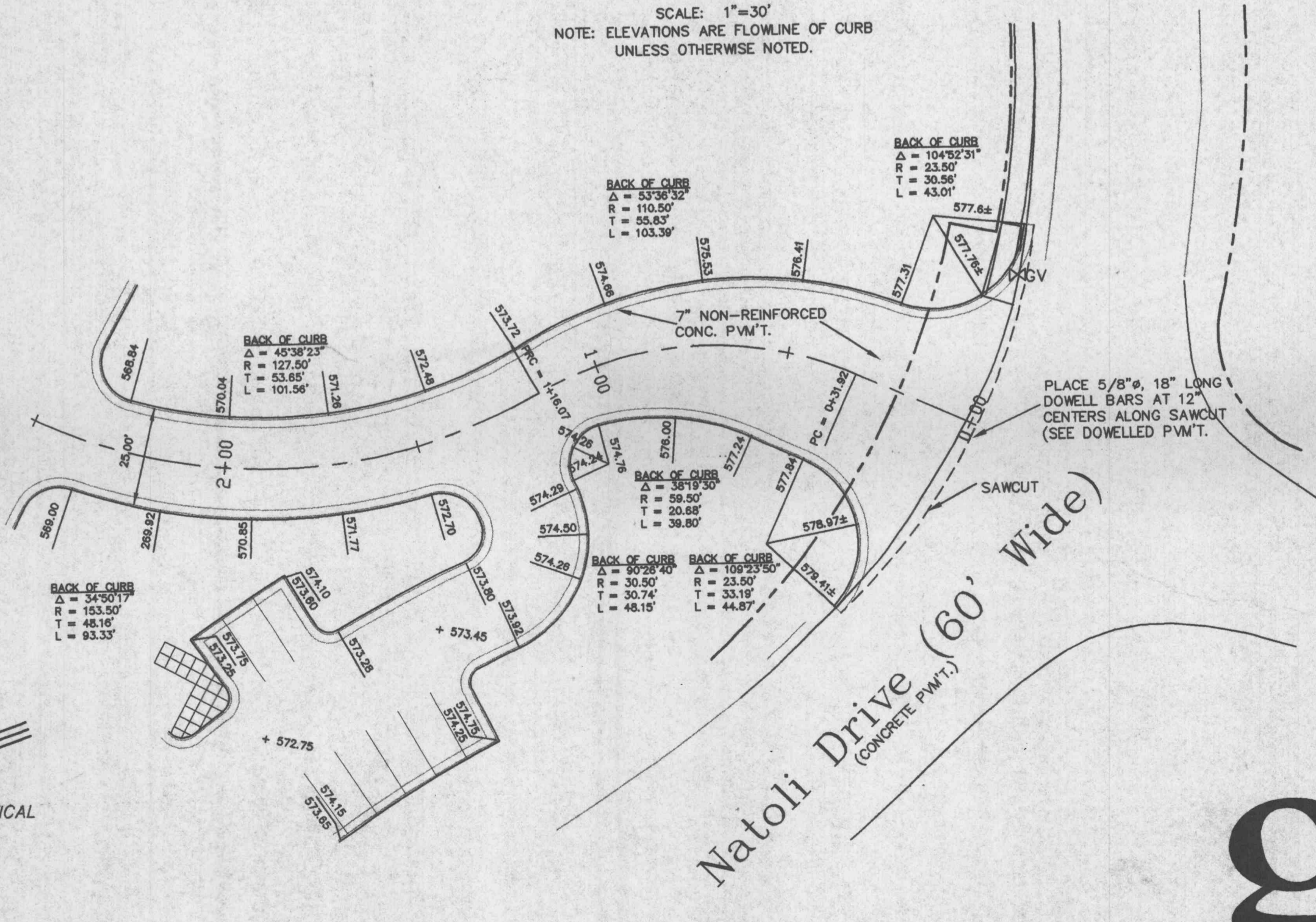
ENTRANCE WARPING

SCALE: 1"=30'
NOTE: ELEVATIONS ARE FLOWLINE OF CURB UNLESS OTHERWISE NOTED.



ENTRANCE WARPING

SCALE: 1"=30'
NOTE: ELEVATIONS ARE FLOWLINE OF CURB UNLESS OTHERWISE NOTED.

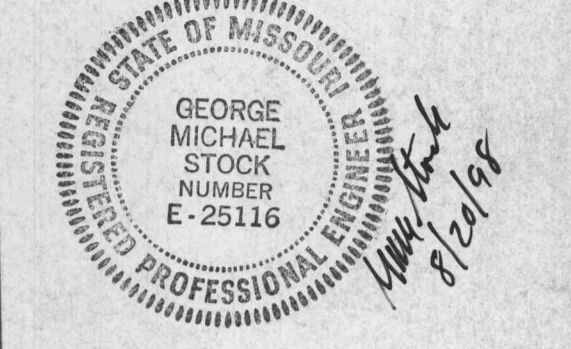


ENTRANCE WARPING

SCALE: 1"=30'
NOTE: ELEVATIONS ARE FLOWLINE OF CURB UNLESS OTHERWISE NOTED.

GRAY DESIGN GROUP, INC.
9 Sutter Drive, Suite 110
St. Louis, Missouri 63143
Fax 314.646.0100
Telephone 314.646.0400

Date: _____
Contact: P.K.B.
Produced By: P.K.B.
Reviewed By: G.M.B.
Rev. Description Date
Progress Set 2 08/14/88



General Contractor:
CLAYCO CONSTRUCTION
Structural Engineer:
MONEALY-SUMMERY ENGINEERING
Civil Engineer:
STOCK & ASSOCIATES
HVAC Design Built:
C & R Mechanical Company
Plumbing Design Built:
Electrical Design Built:
Aschinger Electric
Fire Protection:

A NEW OFFICE BUILDING
O'FALLON CORPORATE CENTER
PHASE ONE
O'FALLON MISSOURI



ROLMAR FAMILIE LIMITED PARTNERSHIP

gray
Interiors + Architecture + Planning