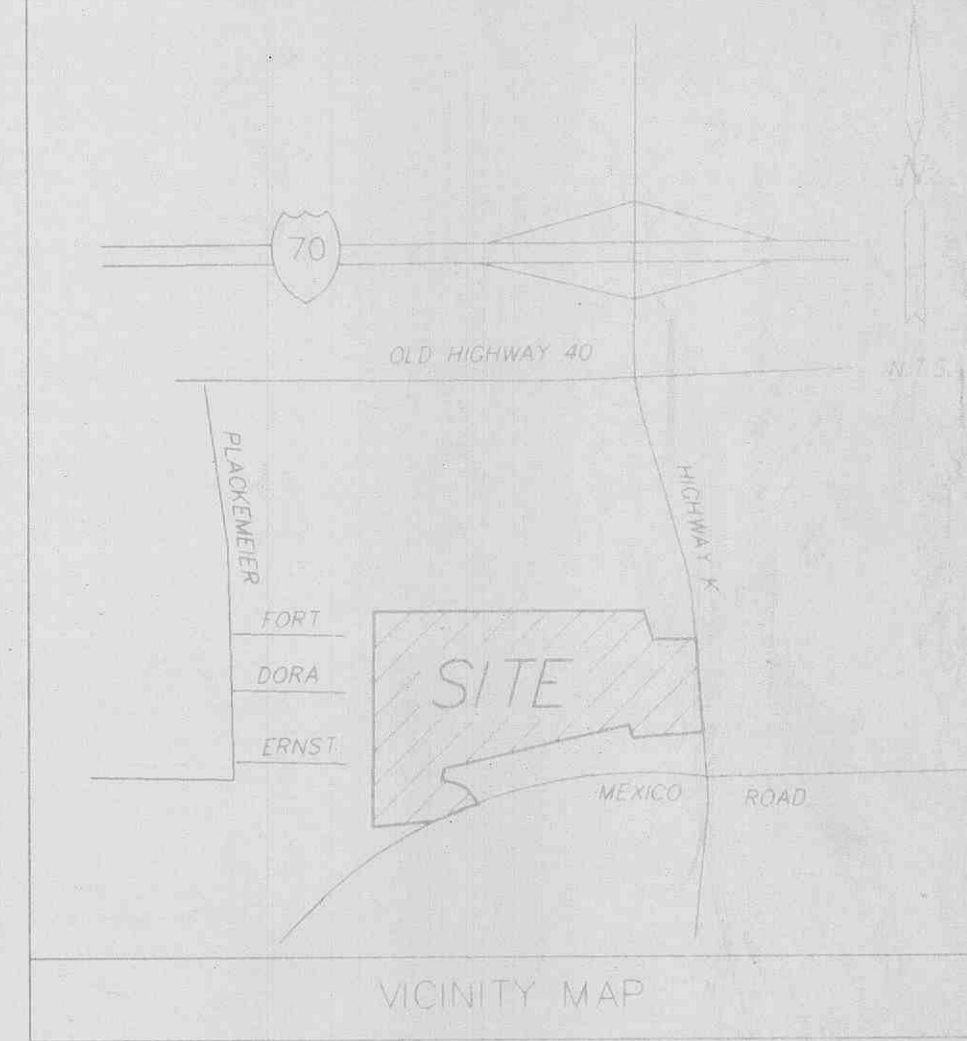
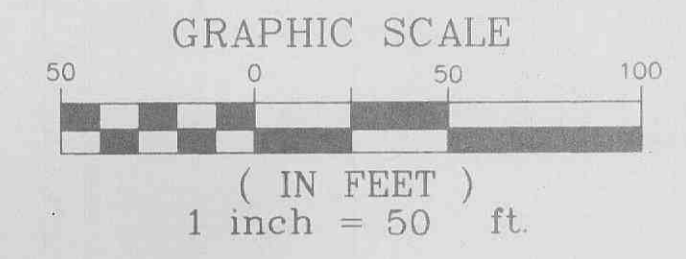
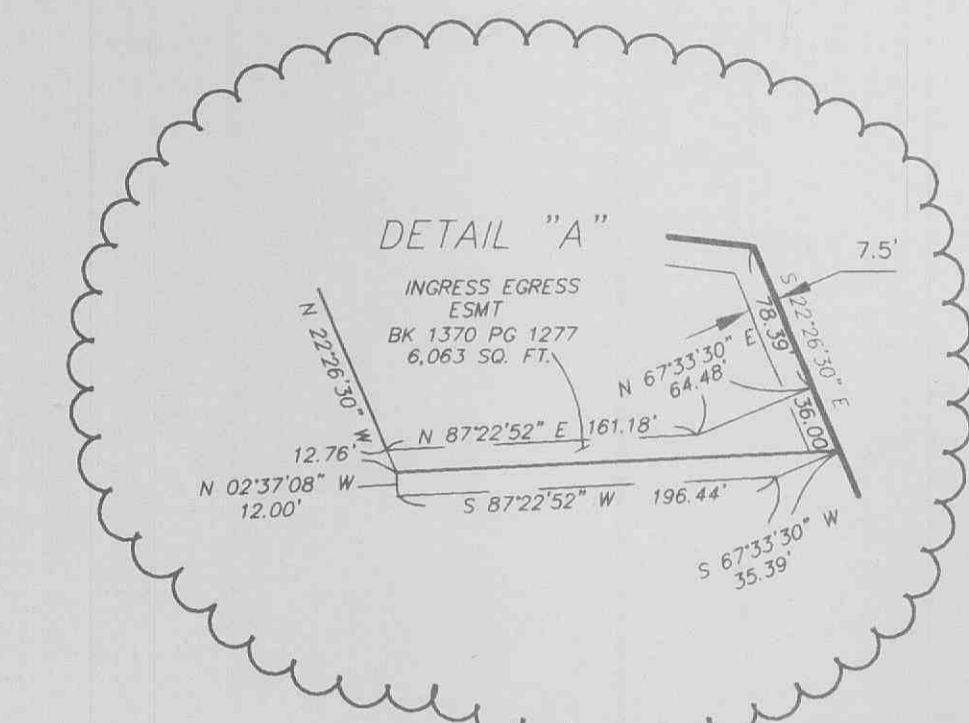


A TRACT OF LAND BEING PART OF
 FRACTIONAL SECTION 33 AND U.S. SURVEY 55
 TOWNSHIP 47 NORTH, RANGE 3 EAST
 ST. CHARLES COUNTY, MISSOURI



- GENERAL NOTES
- Easements shown hereon were plotted from information provided to Pickett, Ray & Silver, Inc. by U.S. Title Guaranty Company from their Commitment No. 568260, Effective Date October 16, 1996 (revised 10-29-96) from their Schedule B - Section 2. Title Report comments provided on separate document.
 - Basis of Bearings - The bearings shown were established from Fort Zumwalt Heights as recorded in Plat Book 5, Page 40 of the St. Charles County Records.
 - Class of Property - Urban.
 - The frame shed apparently encroaches across the west property line as shown hereon.
 - The owners of Tracts 33, 47 & 48 of Ft. Zumwalt Heights are maintaining ground as shown hatched hereon, east of west property line.
 - The concrete curb and gutter encroaches 3'± across the south line of the ingress and egress easement.
 - The contours in the deep ravine area west of the sewer line do not cross but reflect an almost vertical slope.
 - The concrete pad at the rear (West side) of the building, apparently encroach across the property line approximately 1.0' as shown hereon.
 - The right of way for Mexico Road was established from plans titled-Mexico Road Extension R.O.W. Plans by George Butler Associates Inc. dated 11-1-93, (sheet 71 of 79)
 - Per a conversation with Colleen Kramme (with the City of O'Fallon, Mo.) on October 29, 1996, she has informed Pickett, Ray & Silver, Inc. that Mexico Road Construction in the area of this survey has been completed.
 - Standard provided on separate document.

PROJECT BENCH MARK
 FEMA RM58-Cross cut on the west bolt of a fire hydrant at the north east corner of Mill Pond Dr. and Spring Hill Dr.
 Elev. 581.74

SITE BENCH MARK
 Square cut on the concrete island at the northwest corner of Mexico road and Highway K.
 Elev. 516.42

UTILITY NOTE:
 UNDERGROUND FACILITY STRUCTURES AND UTILITIES HAVE BEEN PLOTTED FROM AVAILABLE SURVEYS AND RECORDED INFORMATION AND, THEREFORE, THEIR LOCATIONS MUST BE CONSIDERED APPROXIMATE ONLY. VERIFICATION OF LOCATION OF ALL UNDERGROUND STRUCTURES AND FACILITIES EITHER SHOWN OR NOT SHOWN ON THESE PLANS, SHALL BE THE RESPONSIBILITY OF THE CONTRACTOR.

TO: U.S. TITLE GUARANTY COMPANY OF ST. CHARLES, INC.;
 TRANSDATION TITLE INSURANCE COMPANY;
 THE O'FALLON DEVELOPMENT, L.L.C.; THE ONTARIO DEVELOPMENT, L.L.C.

This is to certify that this map or plat and the survey on which it is based were made (i) in accordance with "Minimum Standard Detail Requirements for ALTA/ACSM Land Title Surveys," jointly established and adopted by ALTA and ACSM in 1992 includes Items 1, 2, 4, 5, 8, 10-11 of Table A thereof, and (ii) pursuant to the Accuracy Standards (as adopted by ALTA and ACSM and in effect on the date of this certification) of an "Urban" Survey, with the exception of Minimum Length Requirements.

By: *Delmar F. Vincent*
 DELMAR F. VINCENT, P.L.S. #1869
 STATE OF MISSOURI

PICKETT, RAY & SILVER'S CORPORATE
 REGISTRATION NO. 15-54-B

Copyright 1997 by Pickett, Ray & Silver Inc.
 CONFIDENTIAL PROPRIETARY MATERIAL
 The use, reproduction and sales rights of this drawing are reserved by Pickett, Ray & Silver Inc.

PICKETT RAY & SILVER

Civil Engineers 333 Mid Rivers Mall Dr.
 Planners St. Peters, MO 63376
 Land Surveyors 301-211 FAX 301-104

A TRACT OF LAND BEING PART OF
 FRAC. SEC. 33 AND U.S. SURVEY 55
 TOWNSHIP 47 NORTH, RANGE 3 EAST
 ST. CHARLES COUNTY, MISSOURI

DRAWN	J.R.C.	DATE	1-15-97
CHECKED		DATE	
FIELD BOOK	450C	PROJECT #	89-0638
		JOB ORDER #	35931

1 2