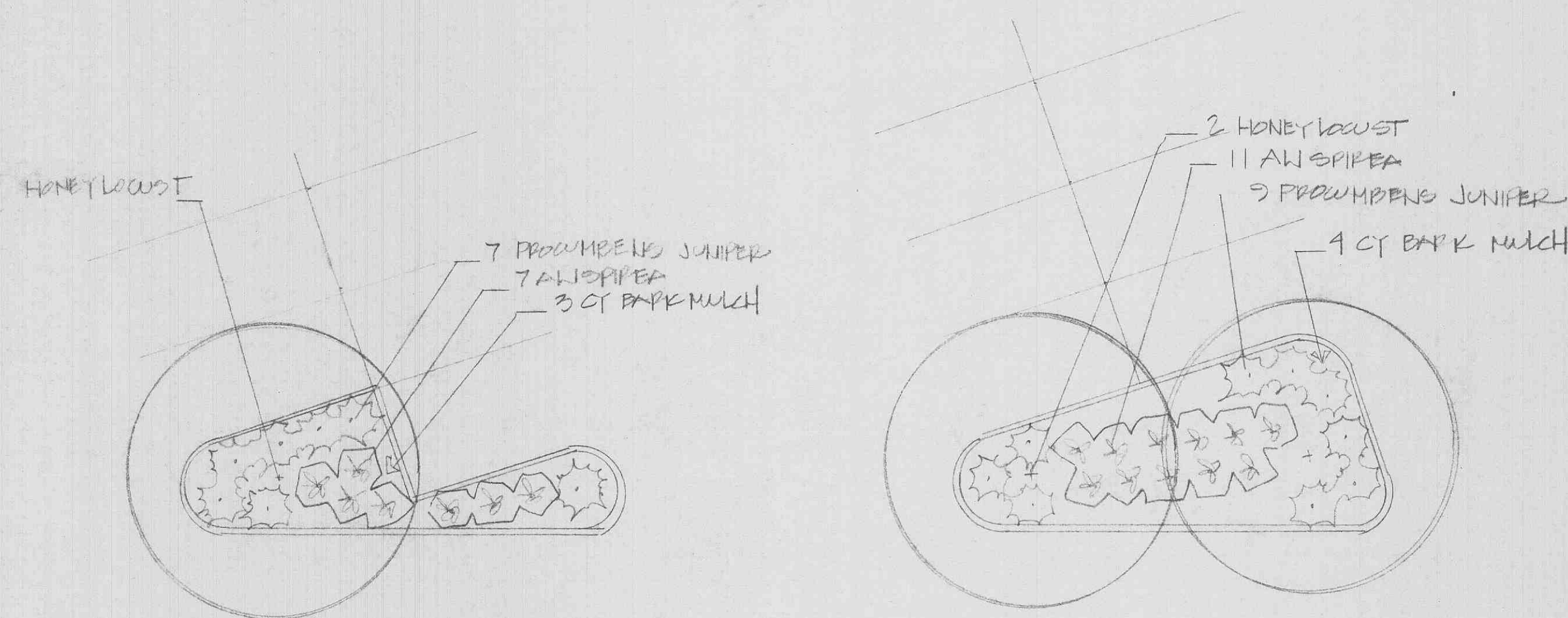


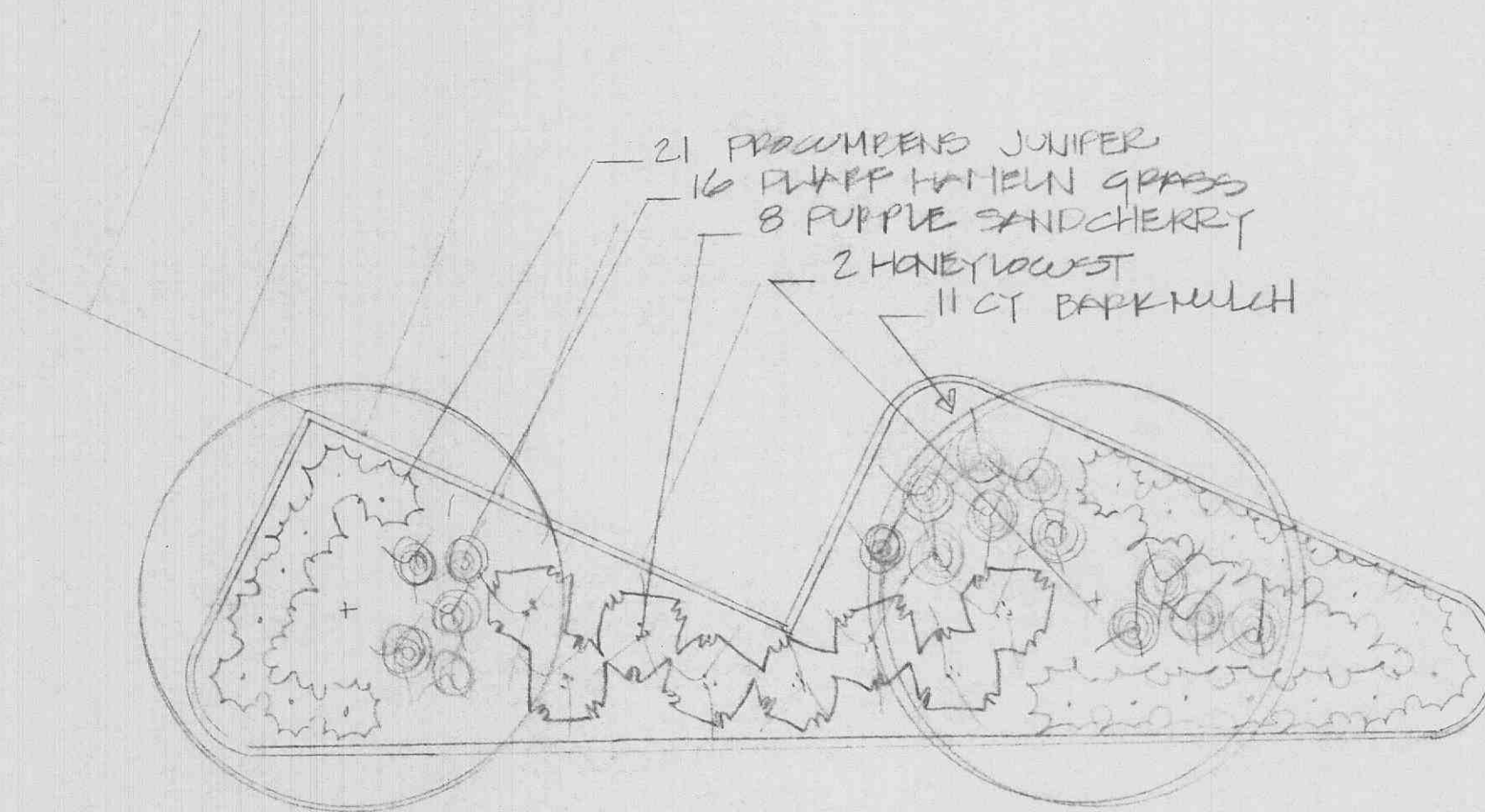
ISLAND DETAILS

Scale: 1" = 10'0"

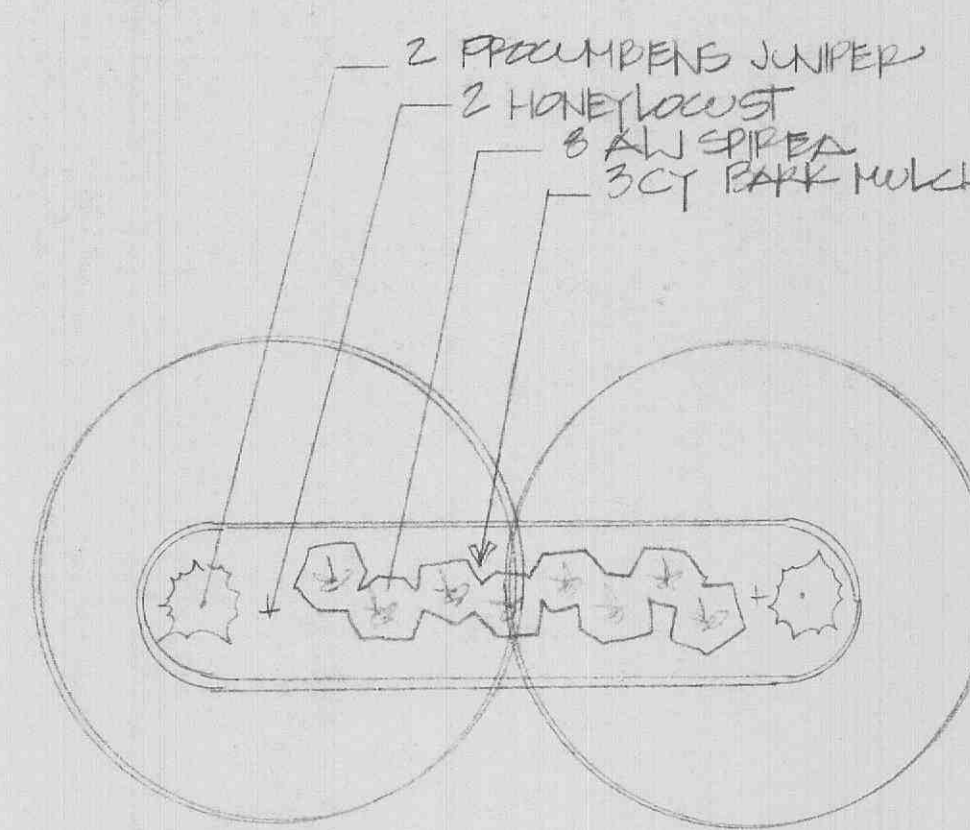


D Island Planting 1 ISLAND
TYPICAL

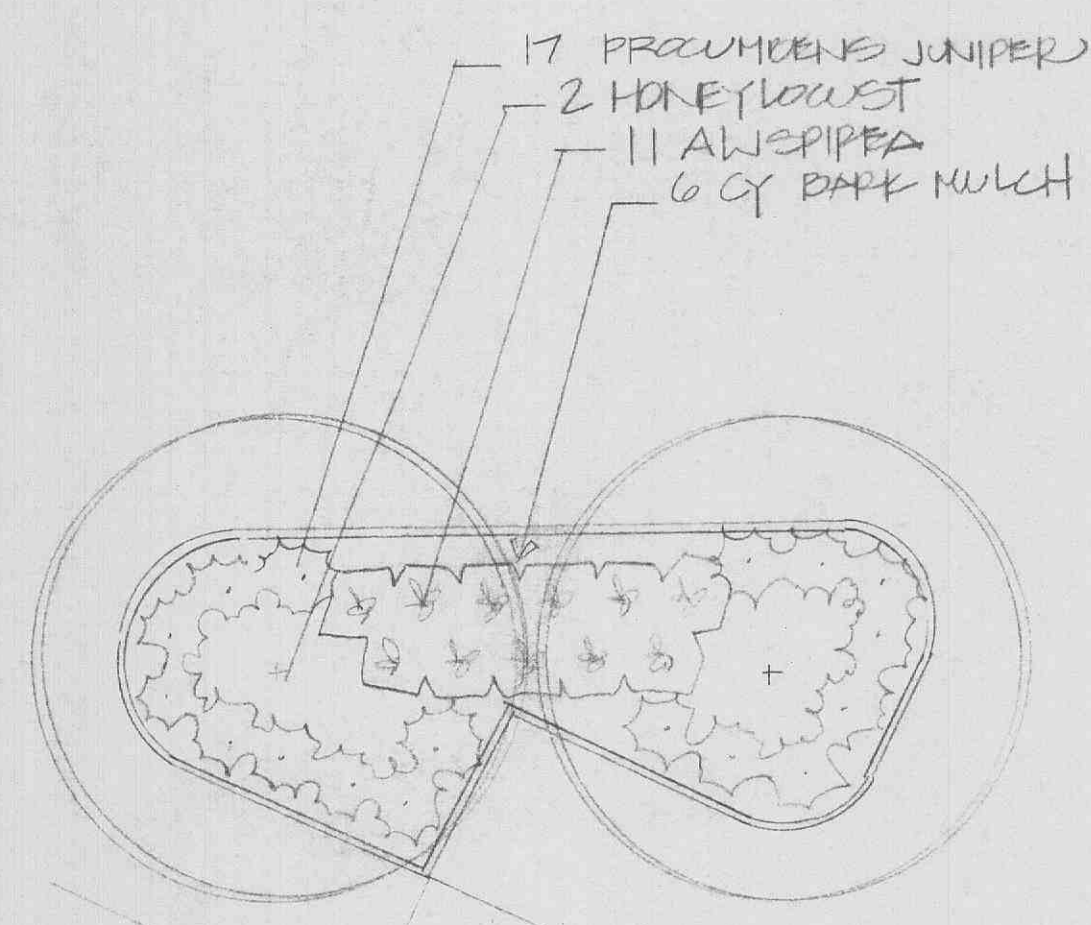
A Island Planting 4 ISLANDS
TYPICAL



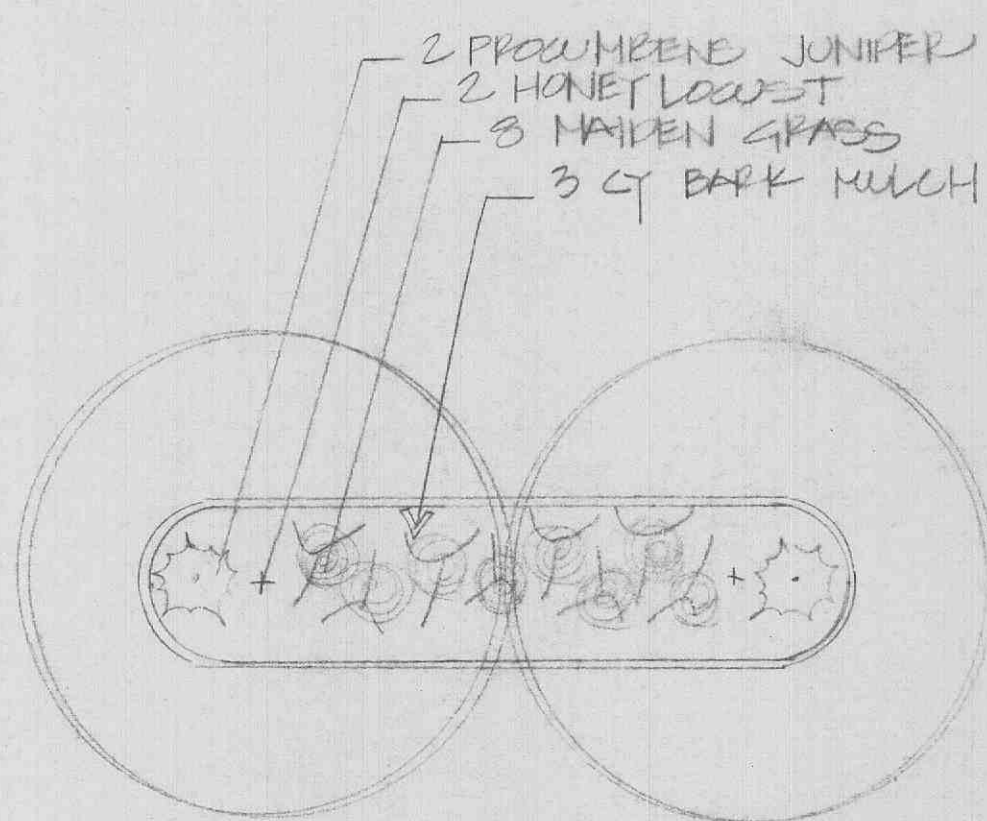
F Island Planting 5 ISLANDS
TYPICAL



B Island Planting 8 ISLANDS
TYPICAL



E Island Planting 8 ISLANDS
TYPICAL



C Island Planting 6 ISLANDS
TYPICAL

LEGEND

SYMBOL	QUANTITY	COMMON NAME	SIZE
FC	20	FLOWERING CRAB	2-2 1/2"
	68	HONEYLOCUST	26-30"
RS	48	RED SUNSET MAPLE	2-2 1/2"
AP	37	AUTUMN PURPLE ASH	2-2 1/2"
☆	148	WHITE PINE	6-8"
	6	NORWAY SPRUCE	7'
	203	ALSPICEA	2 gal
	312	PROCEMBENS JUNIPER	2 gal
	80	PLUFF HAMBLEN GRASS	2 gal
	40	PURPLE SANDCHERRY	3-4'
	108	MAIDEN GRASS	2 gal
	225	ITEA 'HENRY'S GARNET'	2 gal
	228	BARK MULCH	CT
	12155	CROWN VETCH 2:1 SLOPE	SY
	4780	SEEDING Anchor 1 & Anchor 2	SY
	9850	SEEDING off PL	SY
	4614	SEEDING OUT LOT #1	SY
	5210	SEEDING OUT LOT #2	SY
	4310	SEEDING OUT LOT #3	SY
	5290	SEEDING OUT LOT #4	SY
	1256	CROWN VETCH OUTLOT #1	SY
	707	CROWN VETCH OUTLOT #3	SY
	486	CROWN VETCH OUTLOT #4	SY
PO	26	PIN OAK	2-2 1/2"
P'	61	FLOWERING PEAR	2-2 1/2"

NOTE: ALL PLANTING BEDS SHALL BE MULCHED WITH SHIP-BLENDED BARK.

○ Landscape Detail

NOTICE
This drawing is the property of A. Waldhart and Sons Nursery. Each plan formulated by our firm involves original thought and ideas; therefore, we reserve the copyright to any design prepared by our staff. Use of this plan and/or any portion thereof for competitive bids, pricing, or related purposes is illegal without our written permission.

PROPOSED COMMERCIAL DEVELOPMENT
OF FALLON, MO

THE REALTY ST. LOUIS, MO

Date 12-20-16 Revised 1-15-17 2-6-17
Sheet 1-2
Drawn by [Signature]

895-4589
A. WALDBART AND SONS
Established 1872
Landscape Designers, Landscape Contractors & Nurserymen
1420 Teton Rd., Hazelwood, MO 63042