

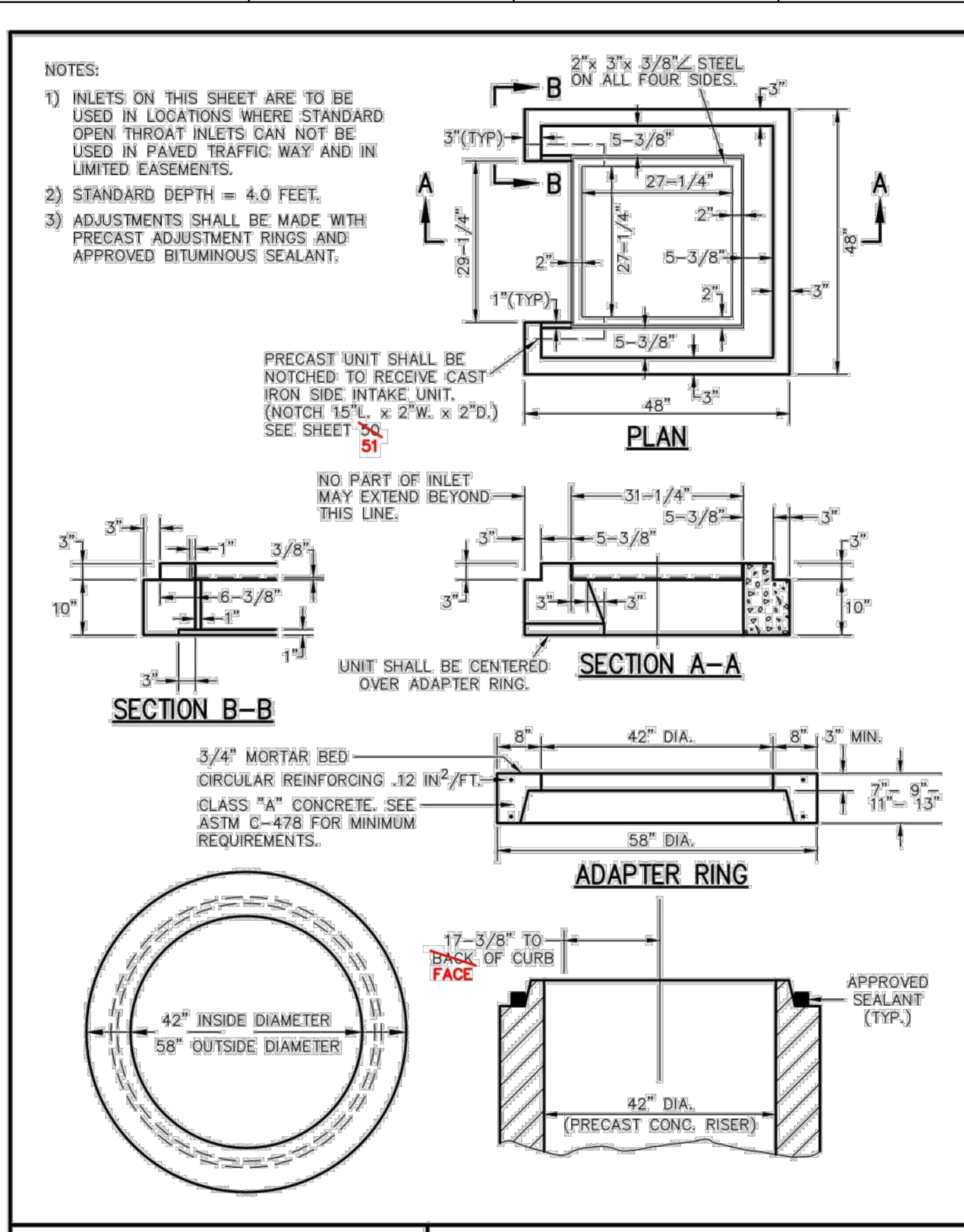
OWNER
CITY OF O'FALLON
100 NORTH MAIN STREET
O'FALLON, MO 63366
636.379.5590

PROJECT TEAM
CIVIL ENGINEER
PREMIER DESIGN GROUP
100 MIDLAND PARK DRIVE
WENTZVILLE, MO 63385
314.925.7444

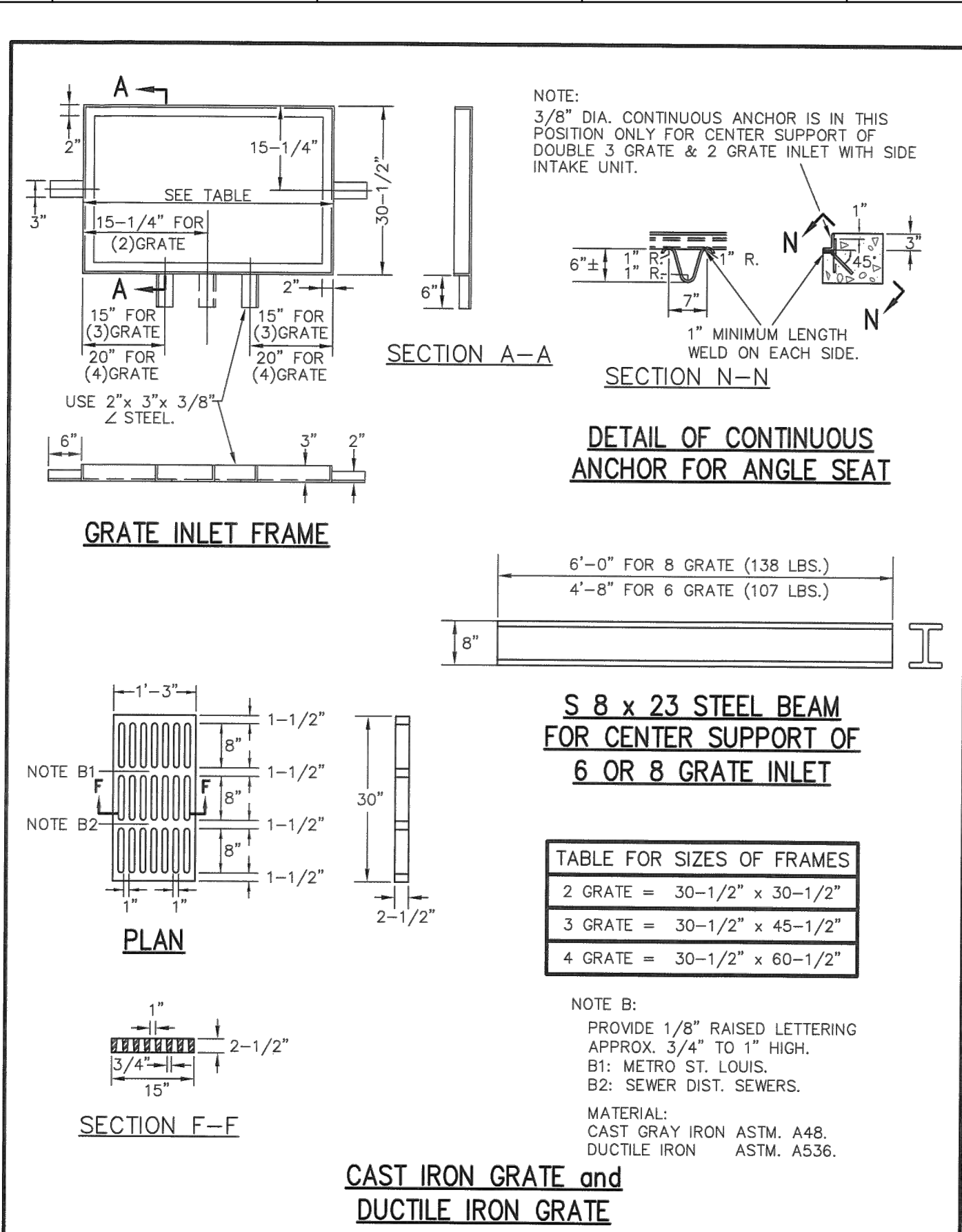
MAINTENANCE CONSULTANT
HDR ENGINEERING, INC.
17725 KATY FREEWAY SUITE 102
HOUSTON, TX 77044

STRUCTURAL ENGINEER
METTEMAYER ENGINEERING
2225 W CHESTERFIELD BLVD., SUITE 300
SPRINGFIELD, MO 65807
417.890.8002

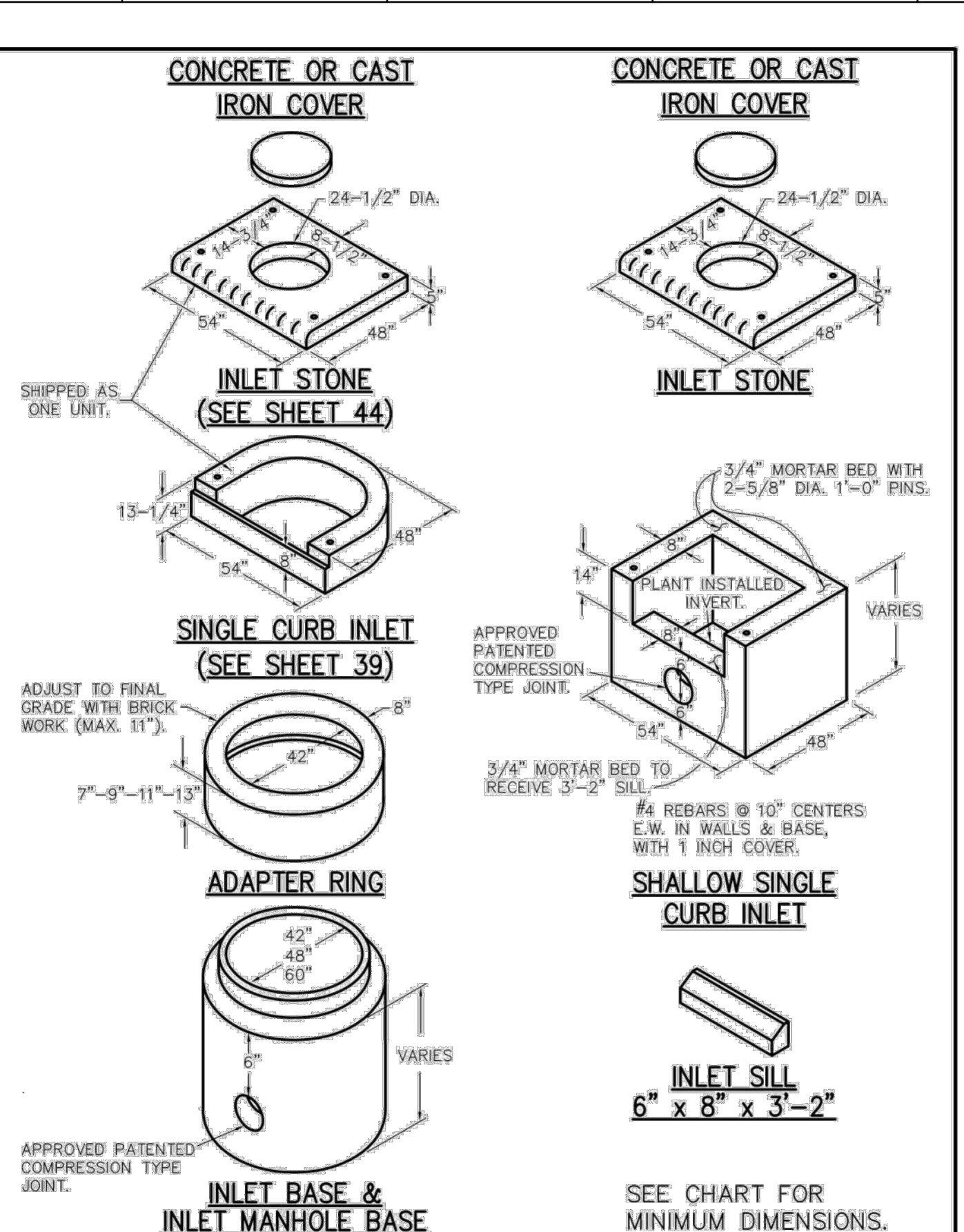
MEP ENGINEER
HENDERSON ENGINEERS, INC.
8345 LENEAXA DR., #300
LENEAXA, KS 66214
913.742.5000



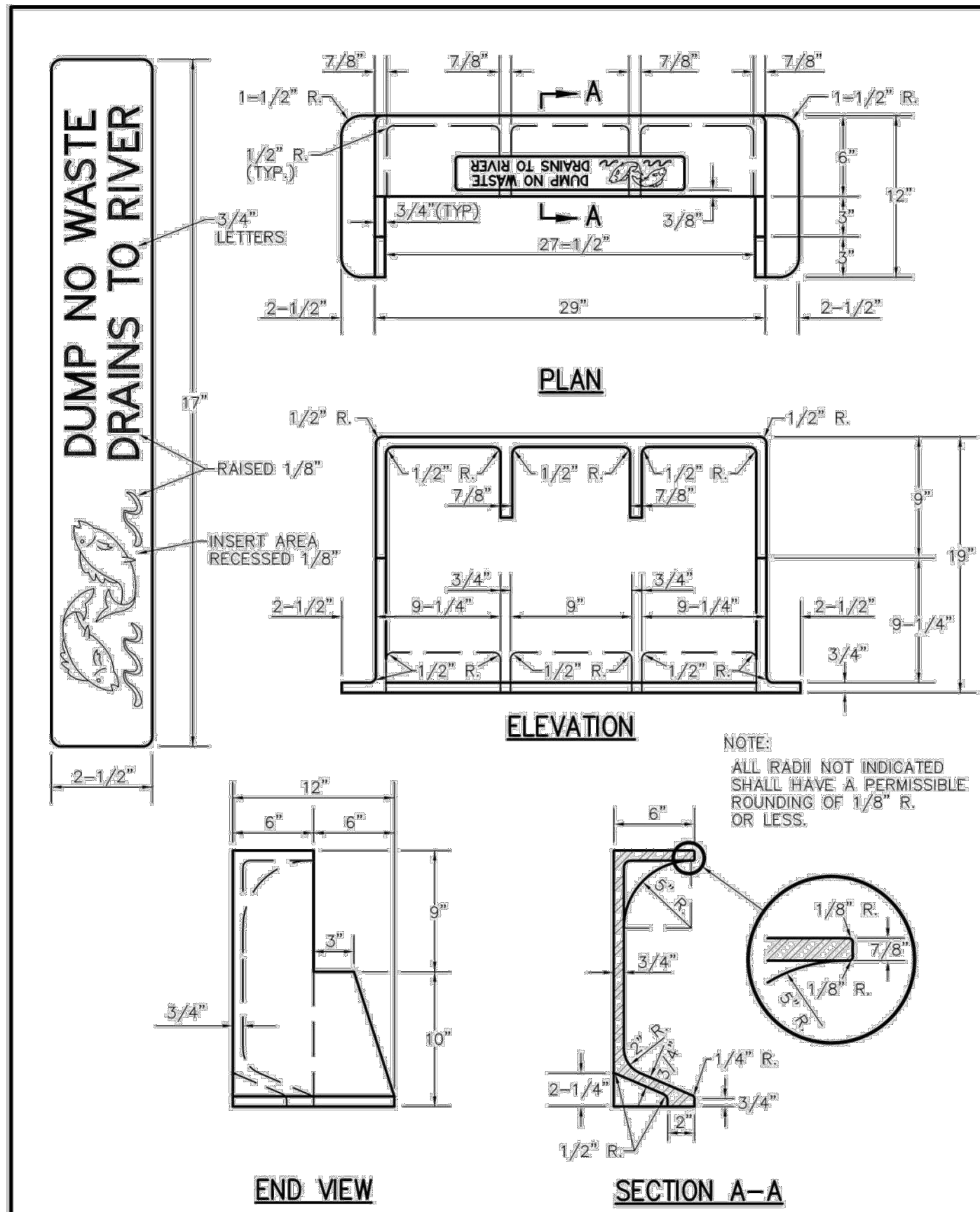
GRATE SEAT FOR 2 GRATE INLET WITH SIDE INTAKE
METROPOLITAN ST. LOUIS SEWER DISTRICT
Standard Details of Sewer Construction
Dr. WSH/AJCK
Ch. FWS
2014
SHEET 32
Revised



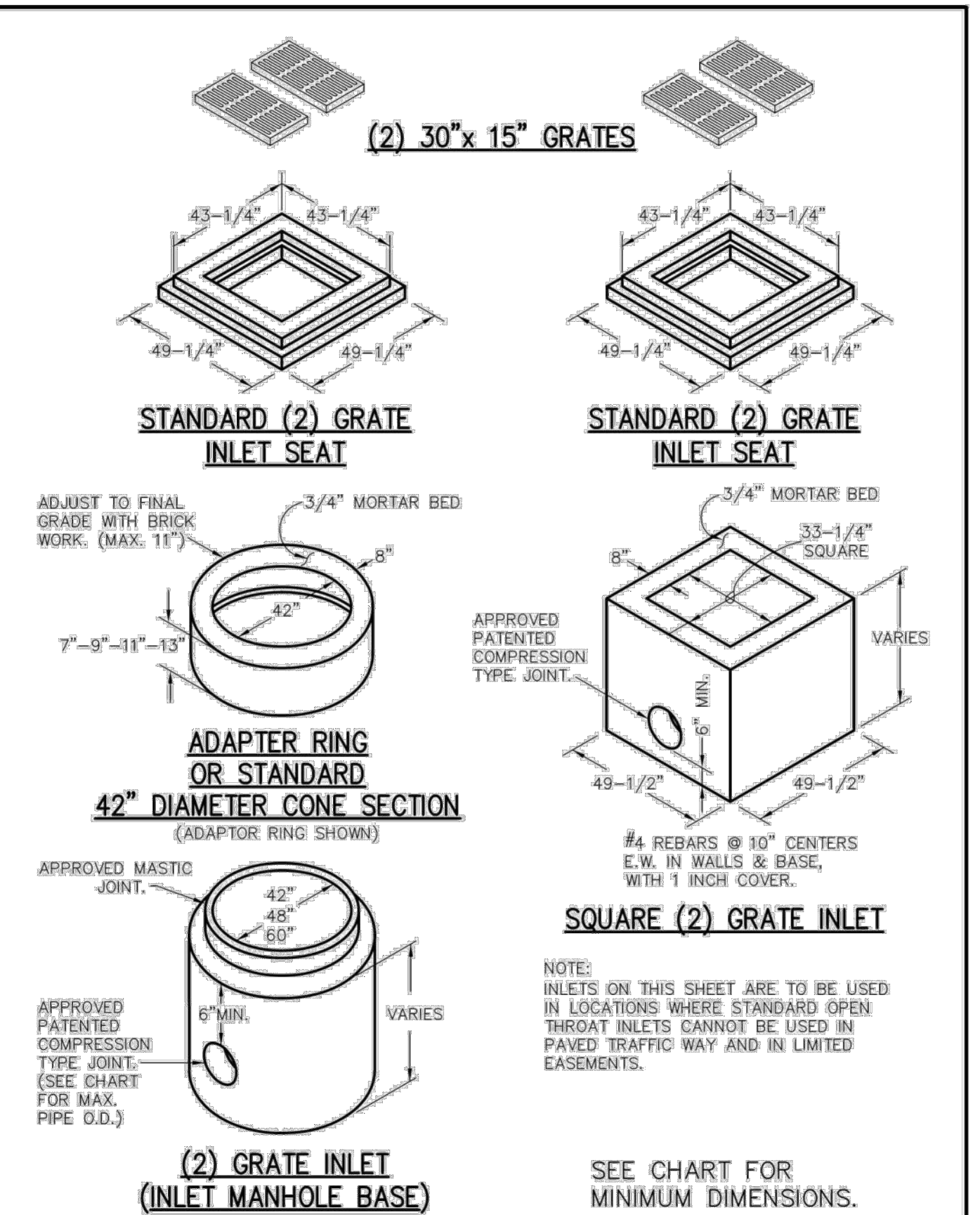
DETAILS OF INLET FRAME AND GRATES
METROPOLITAN ST. LOUIS SEWER DISTRICT
Standard Details of Sewer Construction
Dr. RGW/SAM
Ch. J.C.K.
2009
SHEET 47
(REVISED)



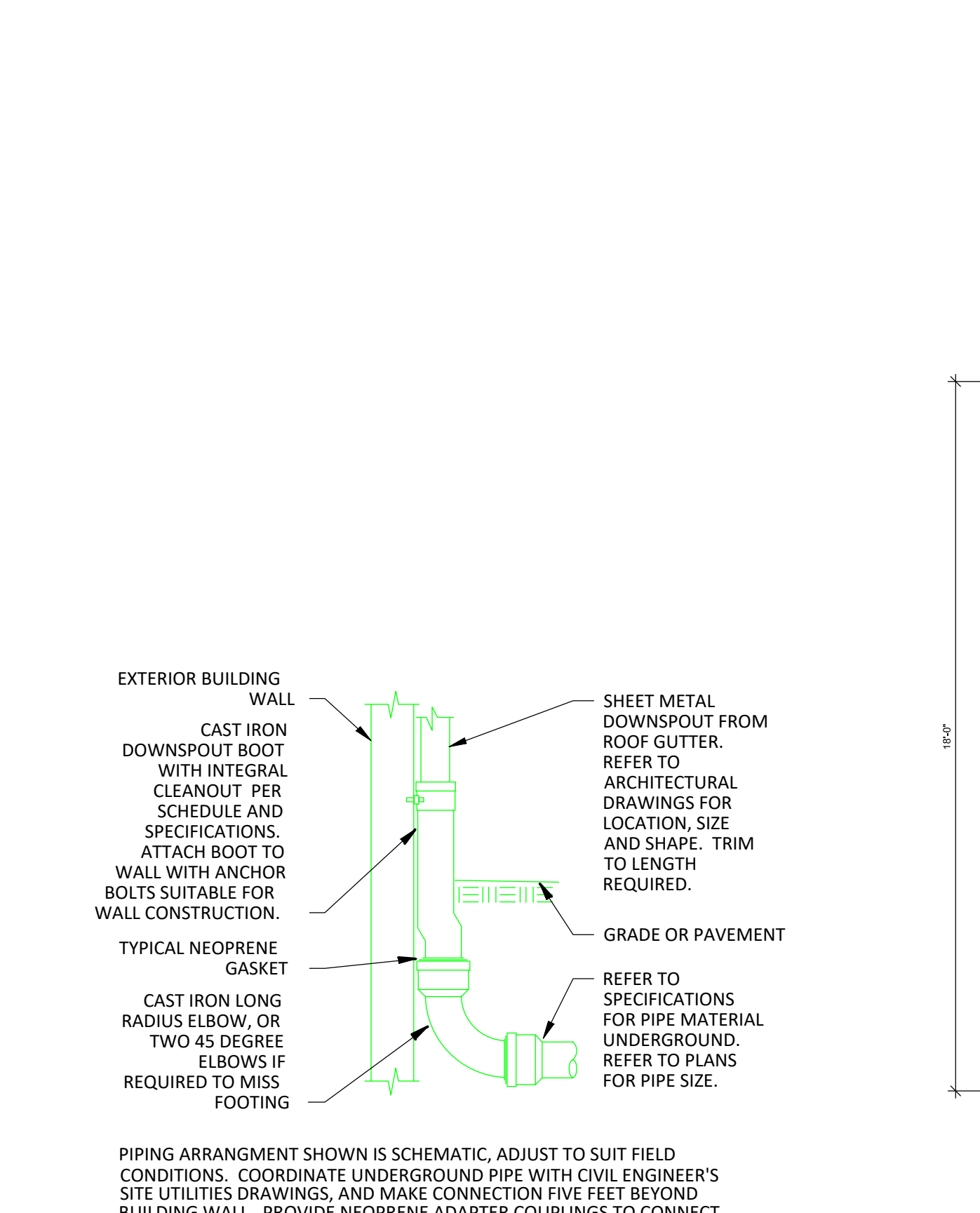
SINGLE STREET INLETS PRECAST CONCRETE
METROPOLITAN ST. LOUIS SEWER DISTRICT
Standard Details of Sewer Construction
Dr. JLG/SAM
Ch. J.C.K.
2009
SHEET 36



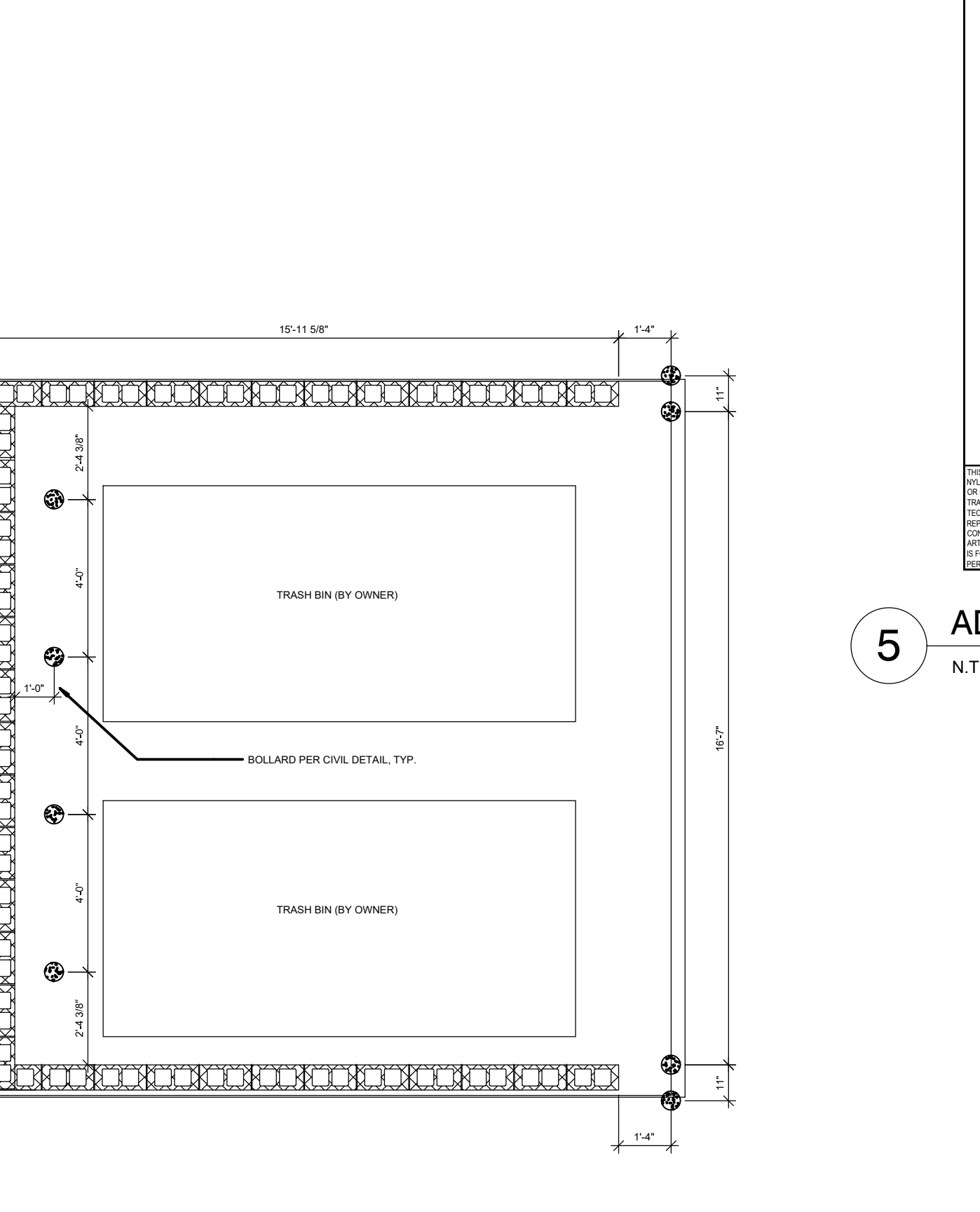
CAST IRON SIDE INTAKE UNIT FOR GRATED INLETS 249 LBS.
METROPOLITAN ST. LOUIS SEWER DISTRICT
Standard Details of Sewer Construction
Dr. RGW/SAM
Ch. J.C.K.
2009
SHEET 51



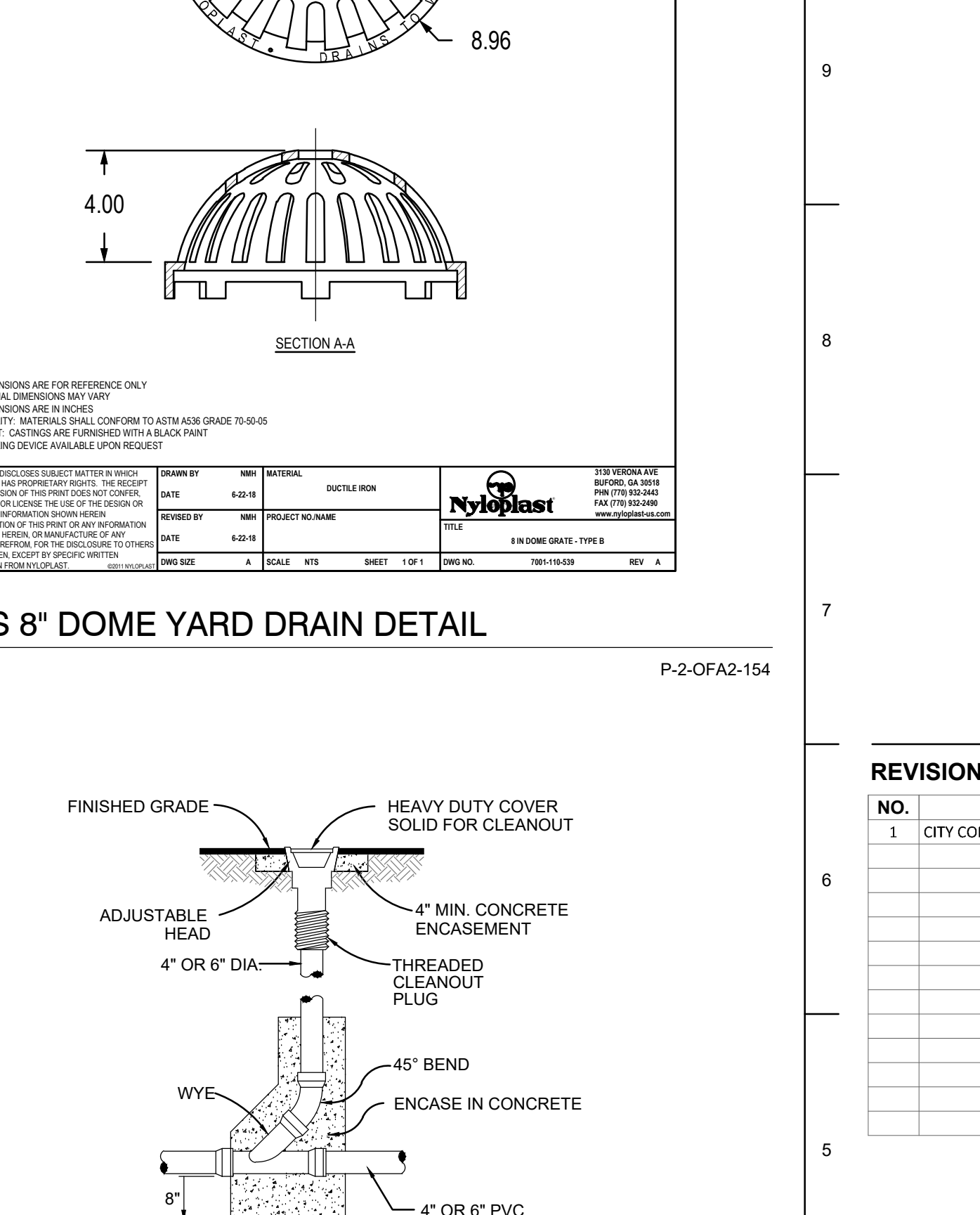
2 GRATE INLETS PRECAST CONCRETE
METROPOLITAN ST. LOUIS SEWER DISTRICT
Standard Details of Sewer Construction
Dr. JLG/SAM
Ch. J.C.K.
2009
SHEET 35



7 DOWNSPOUT BOOT CONNECTION DETAIL
N.T.S. P-2-OFA2-156



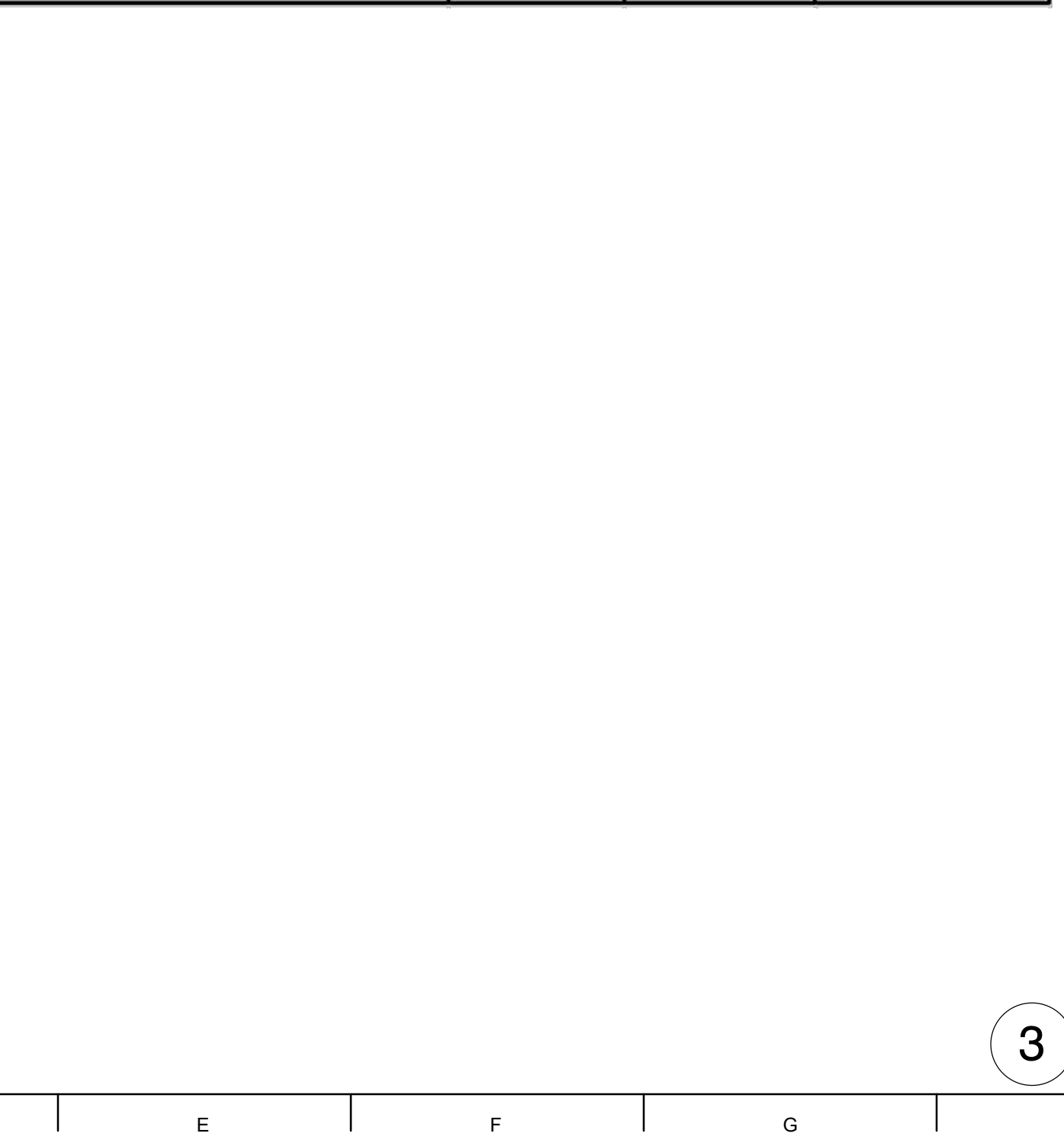
6 TRASH ENCLOSURE DETAIL
N.T.S. P-2-OFA2-155



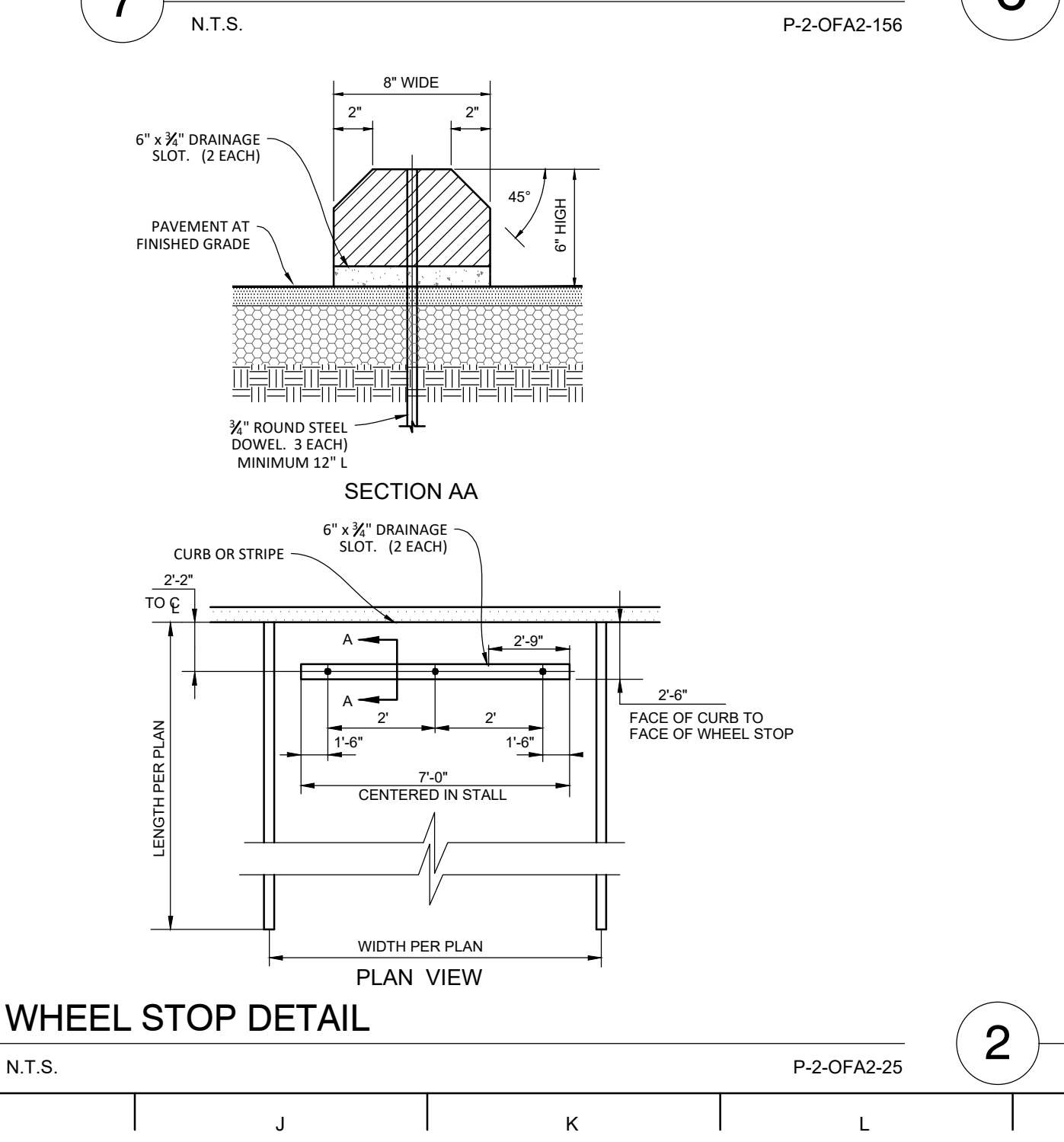
4 CLEANOUT DETAIL
NOT TO SCALE P-2-OFA2-153



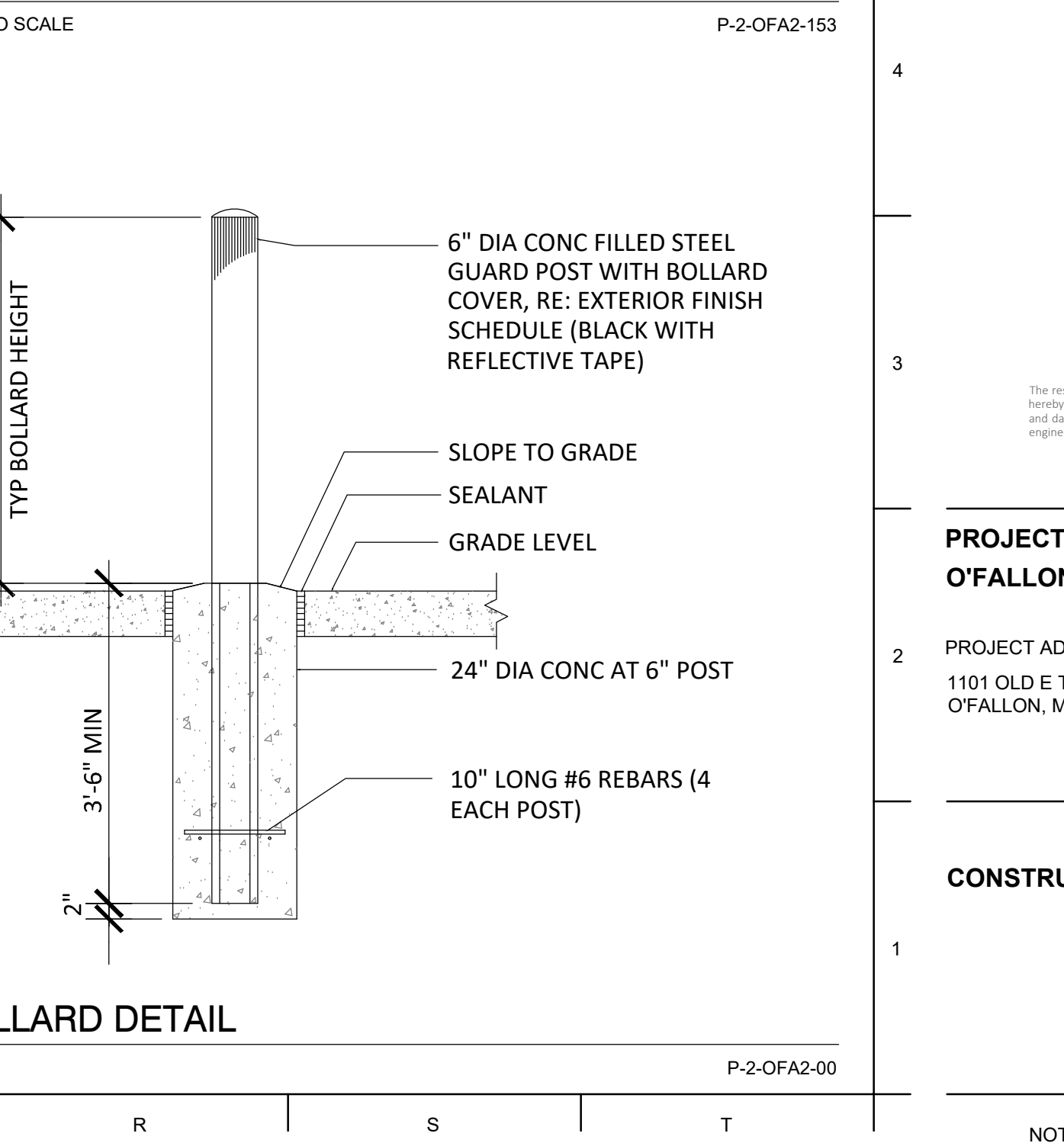
3 WHEEL STOP DETAIL
N.T.S. P-2-OFA2-25



2 LIGHT STANDARD DETAIL
N.T.S. P-2-OFA2-116



1 BOLLARD DETAIL
N.T.S. P-2-OFA2-116



5 ADS 8\" DOME YARD DRAIN DETAIL
N.T.S. P-2-OFA2-154

REVISIONS

| NO. | DESCRIPTION | DATE |
|-----|---------------|-----------|
| 1 | CITY COMMENTS | 3/26/2024 |

PROJECT NO.: 2207920 DRAWN BY: A. JONES
DATE: 02/02/2024 REVIEWED BY: M. FOGARTY



PROJECT TITLE
O'FALLON PUBLIC WORKS FACILITY

PROJECT ADDRESS:
1101 OLD E TERRA LANE
O'FALLON, MO 63366

CONSTRUCTION DETAILS