

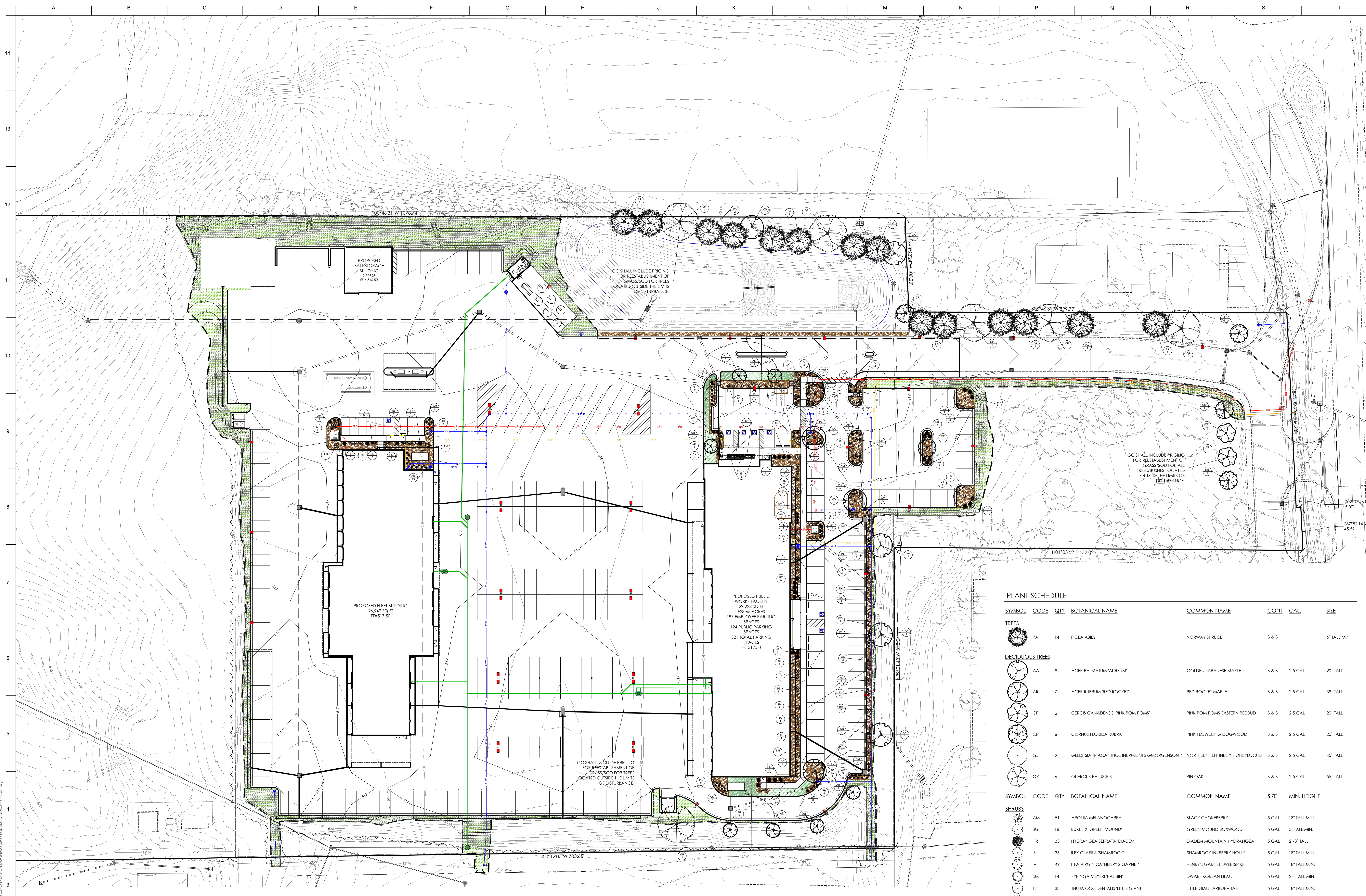
OWNER
CITY OF OFFALLON
100 NORTH MAIN STREET
OFFALLON, MO 63366
636.379.5590

PROJECT TEAM
CIVIL ENGINEER
PREMIER DESIGN GROUP
100 MIDLAND PARK DRIVE
WENTZVILLE, MO 63385
514.925.7444

MAINTENANCE CONSULTANT
HDR ENGINEERING, INC.
17725 KATY FREEWAY SUITE 102
HOUSTON, TX 77064
417.890.8002

STRUCTURAL ENGINEER
METTMAYER ENGINEERING
2225 W CHESTERFIELD BLVD., SUITE 300
SPRINGFIELD, MO 65807
417.890.8002

MEP ENGINEER
HENDERSON ENGINEERS, INC.
8345 LENEXA DR., #300
LENEXA, KS 66214
913.742.5000



PLANT SCHEDULE

SYMBOL	CODE	QTY	BOTANICAL NAME	COMMON NAME	CONT	SIZE
TREES						
	PA	14	PICEA ABIES	NORWAY SPRUCE	8 & 8	6' TALL MIN.
DECIDUOUS TREES						
	AA	8	ACER PALMATUM 'AUREUM'	GOLDEN JAPANESE MAPLE	8 & 8	2.5' CAL
	AR	7	ACER RUBRUM 'RED ROCKET'	RED ROCKET MAPLE	8 & 8	2.5' CAL
	CP	2	CERCIS CANADENSIS 'PINK POM POWS'	PINK POM POWS EASTERN REDBUD	8 & 8	2.5' CAL
	CR	6	CORNUS FLORIDA RUBRA	PINK FLOWERING DOGWOOD	8 & 8	2.5' CAL
	GJ	2	GLEDITSIA TRIACANTHOS INERMIS 'JFS GMORGONSON'	NORTHERN SENTINEL™ HONEYLOCUST	8 & 8	2.5' CAL
	QP	6	QUERCUS PALUSTRIS	PIN OAK	8 & 8	2.5' CAL
SHRUBS						
	AM	51	ARONIA MELANOCARPA	BLACK CHOCHEBERRY	5 GAL	18" TALL MIN.
	BG	18	BUXUS 'GREEN MOUND'	GREEN MOUND BOXWOOD	5 GAL	3' TALL MIN.
	HR	33	HYDRANGEA SERRATA 'DIADEM'	DIADEM MOUNTAIN HYDRANGEA	5 GAL	2'-3' TALL
	IS	35	ILEX GLABRA 'SHAMROCK'	SHAMROCK INKERRY HOLLY	5 GAL	18" TALL MIN.
	IV	49	ITEA VIRGINICA 'HENRY'S GARNET'	HENRY'S GARNET SWEETSPIRE	5 GAL	18" TALL MIN.
	SM	14	SYRINGA MEYER 'PALBIR'	DWARF KOREAN LILAC	5 GAL	24" TALL MIN.
	TL	33	THUJA OCCIDENTALIS 'LITTLE GIANT'	LITTLE GIANT ARBORVITAE	5 GAL	18" TALL MIN.
	WD	30	WEIGELA FLORIDA 'DARK HORSE'	DARK HORSE WEIGELA	5 GAL	18" TALL MIN.
GRASSES						
	CX	49	CALAMAGROSTIS X ACUTIFLORA 'KARL FOERSTER'	KARL FOERSTER FEATHER REED GRASS	5 GAL	18" TALL MIN.
	FB	50	PENNISETUM ALOPECUROIDES 'LITTLE BUNNY'	LITTLE BUNNY FOUNTAIN GRASS	5 GAL	18" TALL MIN.

LANDSCAPE PLAN REQUIREMENTS (SECTION 425.560)

- STREET TREES**
1 TREE PER EVERY FORTY (40) FEET (EXCLUDING ENTRANCES), AND ONE TREE FOR EVERY FOUR THOUSAND (4,000) SQUARE FEET OF LANDSCAPE OPEN SPACE.
180.18 + 40 LINEAL FEET ALONG THE SOUTH OF THE PROPERTY = 4.5
- A. TREES SHALL NOT BE PLACED WITHIN TWENTY-FIVE (25) FEET OF ANY STREET LIGHT OR WITHIN FIFTEEN (15) FEET OF THE BACK OF CURB.
 - B. TREES SHALL NOT BE PLACED WITHIN TWENTY-FIVE (25) FEET OF TRAFFIC CONTROL OR STREET SIGNS.
 - C. TREES SHALL NOT BE PLANTED WITHIN TEN (10) FEET OF STREET STORMWATER INLETS OR MANHOLES.
 - D. TREES MAY NOT BE PLANTED CLOSER TO THE CENTERLINE OF AN OVERHEAD POWER LINE AS LISTED IN SECTION 402.130 A. 5.
 - E. TO REDUCE POTENTIAL DAMAGE TO SIDEWALKS THE CITY RECOMMENDATION OF SETBACKS IN SECTION 402.130 A. 6.

PARKING LOT INTERIOR LANDSCAPING

- NOT LESS THAN SIX PERCENT (6%) OF THE INTERIOR OF A PARKING LOT SHALL BE LANDSCAPED. THE INTERIOR OF A PARKING LOT SHALL BE CALCULATED BY MULTIPLYING THE NUMBER OF PARKING SPACES BY TWO HUNDRED (SEVENTY (70) SQUARE FEET). PLANTING WHICH IS REQUIRED ALONG THE PERIMETER OF A PARKING LOT SHALL NOT BE CONSIDERED AS PART OF THE INTERIOR LANDSCAPING REQUIREMENT.
- A. THE LANDSCAPING AND PLANTING AREAS SHALL BE REASONABLY DISPersed THROUGHOUT THE PARKING LOTS.
 - B. THE INTERIOR DIMENSIONS OF ANY PLANTING AREA OR PLANTING MEDIAN SHALL BE SUFFICIENT TO PROTECT THE LANDSCAPING MATERIALS PLANTED THEREIN AND TO INSURE PROPER GROWTH. ANY PROTECTED PLANTING STRIP WHERE TREES ARE TO BE PLANTED SHALL BE A MINIMUM OF SEVEN (7) FEET WIDE AND SHALL BE PROTECTED FROM VEHICLE OVERHANG.
 - C. THE PRIMARY LANDSCAPING MATERIALS USED IN PARKING LOTS SHALL BE TREES WHICH PROVIDE SHADE OR ARE CAPABLE OF PROVIDING SHADE AT MATURITY. SHRUBBERY, HEDGES AND OTHER PLANTING MATERIAL MAY BE USED TO COMPLEMENT THE TREE LANDSCAPING. EFFECTIVE USE OF BANK GARDENS, GARDEN BERMS AND EXISTING TOPOGRAPHY IS ALSO ENCOURAGED AS A COMPONENT OF THE LANDSCAPING PLAN.

LANDSCAPING REQUIRED	2,009 S.F.	INTERIOR
LANDSCAPING PROVIDED	12,319 S.F.	INTERIOR

REVISIONS

NO.	DESCRIPTION	DATE

PROJECT NO.: 2207920 DRAWN BY: A. JONES
DATE: 02/02/2024 REVIEWED BY: M. FOGARTY

PROFESSIONAL SEAL



PROJECT TITLE
OFFALLON PUBLIC WORKS FACILITY

PROJECT ADDRESS:
1101 OLD E TERRA LANE
OFFALLON, MO 63366

LANDSCAPE PLAN

L-100

NOT RELEASED FOR CONSTRUCTION



UNDERGROUND UTILITIES AND OSHA SAFETY NOTE:
Underground utilities and structures have been plotted from available information and therefore, their location must be considered approximate only. It is the responsibility of the individual contractors to notify the utility companies before actual construction. All O.S.H.A. rules and regulations established for the type of construction required by these plans shall be strictly followed (ie. trenching, blasting, etc.)

