

SEE SHEET 110 FOR SIGN LEGEND.

LEGEND

- TEMPORARY PAVEMENT
- NEW PAVEMENT

STRING NOTES

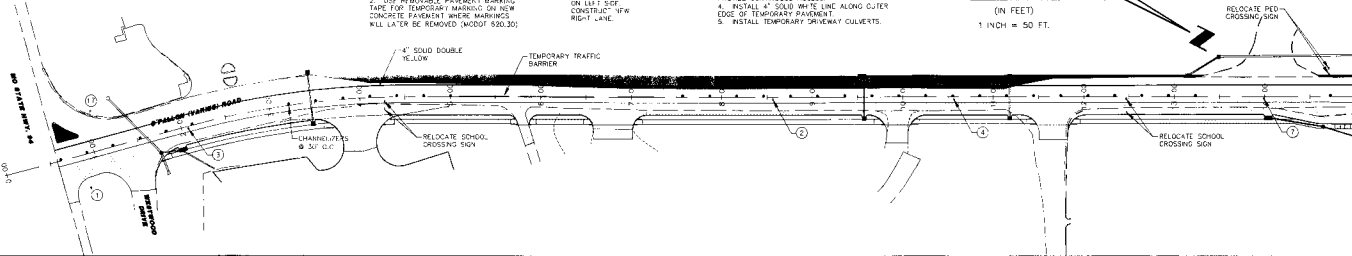
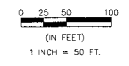
1. USE MARKS ON TEMPORARY ASPHALT SURFACES THAT ARE TO BE REMOVED AND FOR FINAL PAVEMENT MARKINGS (WOODS) (60.50)
2. USE PERMANIBLE PAVEMENT MARKING TAPE FOR TEMPORARY MARKING ON NEW CONCRETE PAVEMENT WHERE MARKINGS WILL LATER BE REMOVED (WOODS) (60.50)

INSTALL TEMPORARY ASPHALT PAVEMENT ON LEFT SIDE CONSTRUCT "IF" W/ RIGHT LANE.

PHASE 1

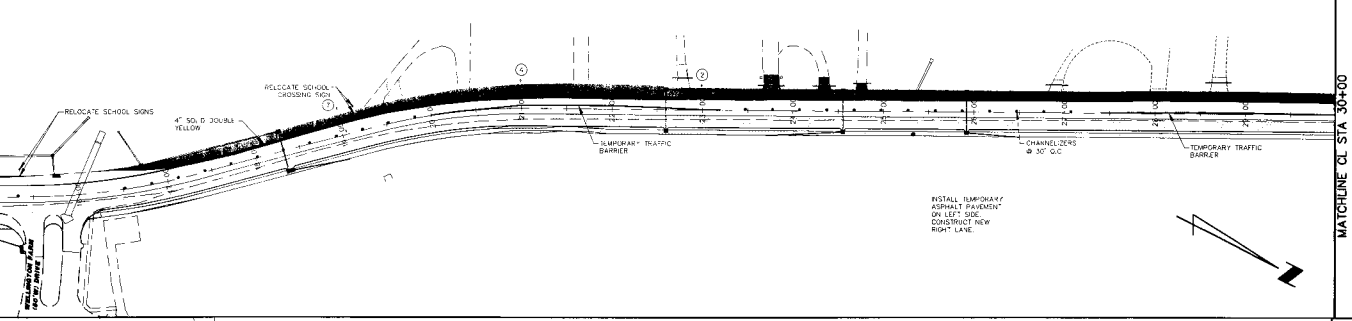
1. REMOVE AND REPOSITION SCHOOL CROSSING SIGNS
2. INSTALL TEMPORARY PAVEMENT TO MAINTAIN DRIVEWAY AND STREET ACCESS
3. CONSTRUCT SIDE LIMITS IN STAGES TO PROVIDE CONTIGUOUS ACCESS
4. INSTALL 4" SOLID WHITE LINE ALONG CUTTER EDGE OF TEMPORARY PAVEMENT
5. INSTALL TEMPORARY DRIVEWAY COVERTS.

GRAPHIC SCALE



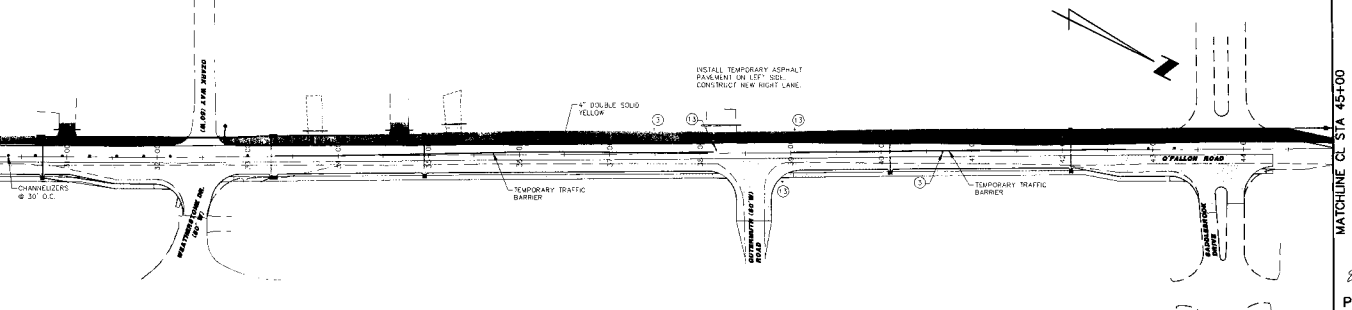
MATCHLINE CL STA 15+00

MATCHLINE CL STA 15+00



MATCHLINE CL STA 30+00

MATCHLINE CL STA 30+00



MATCHLINE CL STA 45+00



PHASE 1