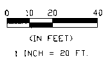
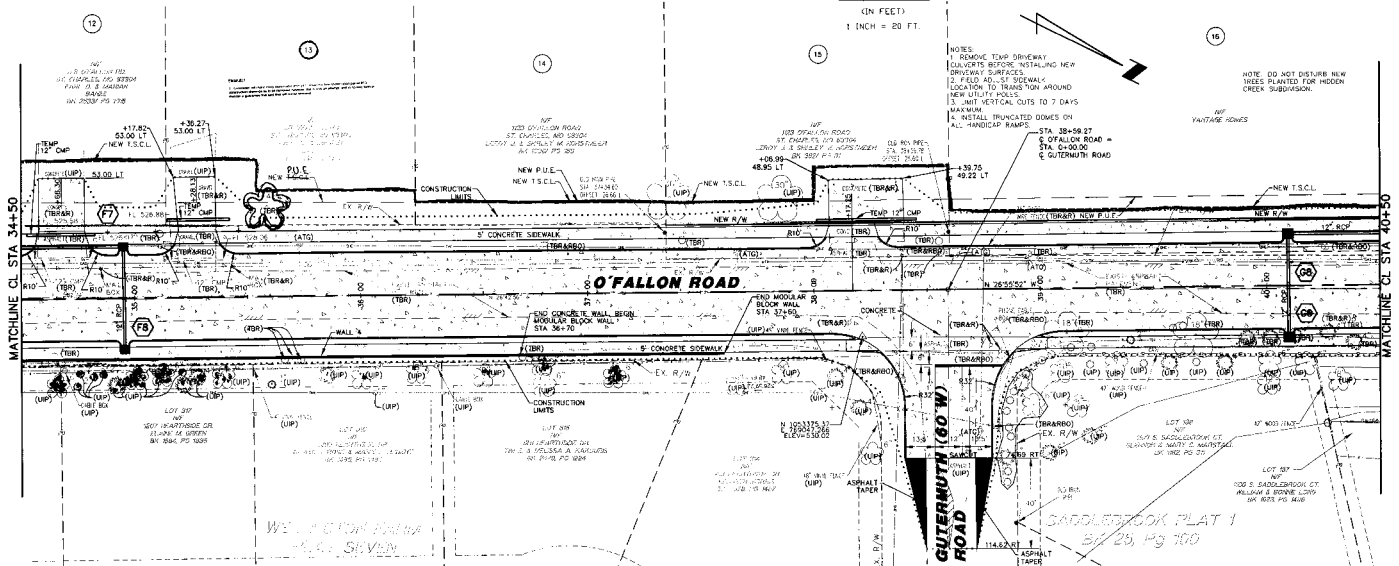


GRAPHIC SCALE



NOTES:  
 1. REMOVE TEMP DRIVEWAY LOCATIONS BEHIND METALLIC NEW DRIVEWAY SURFACES.  
 2. EXIST. RELOC. OF UTILITY LOCATIONS TO BE MAINTAINED AROUND NEW UTILITY HOLES.  
 3. NEW VERTICAL CURBS TO 7 DAYS MAXIMUM.  
 4. METALLIC MANHOLES COMES ON ALL HANDICAP RAMPS.  
 5. STA. 38+58.27  
 6. O'FALLON ROAD = STA. 34+00.00  
 7. GUTERMUTH ROAD

NOTE: DO NOT DISTURB NEW TREES PLANTED FOR HIGHWAY CROSS SUBDIVISION.  
 SEE VANTAGE ROWS



**O'FALLON ROAD**

**GUTERMUTH (60' W) ROAD**

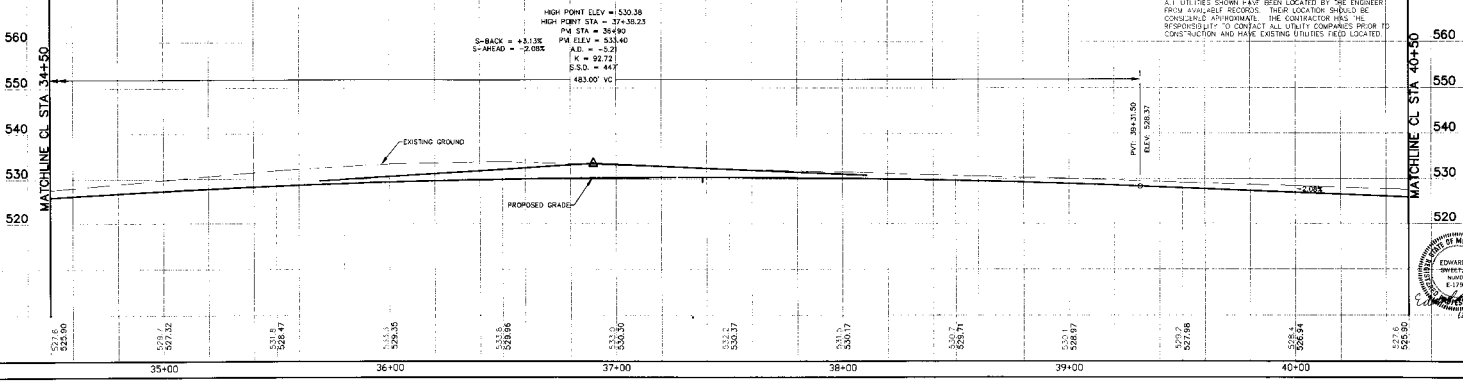
SADDLEBROOK PLAT 1  
 5/1/24, Pg 700

DATE: 11/15/24  
 BY: [Signature]  
 CHECKED: [Signature]  
 TITLE: [Title]

PROJECT: [Project Name]  
 DRAWING NO.: [Drawing No.]  
 SHEET NO.: [Sheet No.]

SCALE: [Scale]  
 DATE: [Date]

HIGH POINT ELEV = 530.38  
 HIGH POINT STA = 37+38.23  
 PVI STA = 36+89.0  
 S-BACK = 43.17% PVI ELEV = 535.40  
 S-FORWARD = -2.01% PVI STA = 36+89.0  
 ALL = -5.28  
 K = 92.72  
 ELEV = 487.0  
 483.00' VC



ALL UTILITIES SHOWN HAVE BEEN LOCATED BY THE ENGINEER FROM AVAILABLE RECORDS. THEIR LOCATION SHOULD BE CONFIRMED PRIOR TO CONSTRUCTION. THE CONTRACTOR HAS THE RESPONSIBILITY TO CONTACT ALL UTILITY COMPANIES PRIOR TO CONSTRUCTION AND MAKE EXISTING UTILITIES BEING LOCATED.

