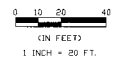


**GRAPHIC SCALE**



**PLAN REVISIONS**

| NO. | DATE | DESCRIPTION |
|-----|------|-------------|
|     |      |             |
|     |      |             |
|     |      |             |

**PROFILE REVISIONS**

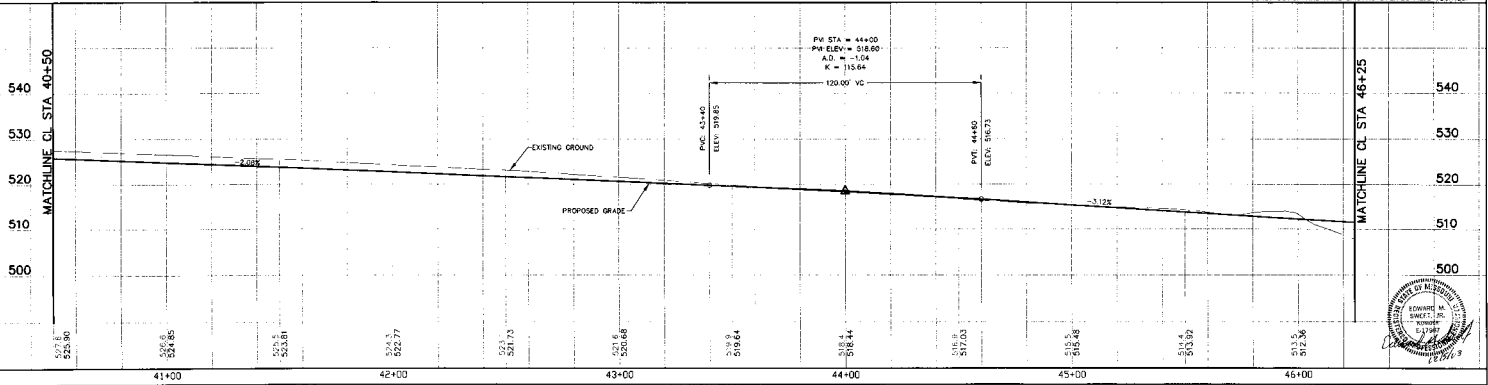
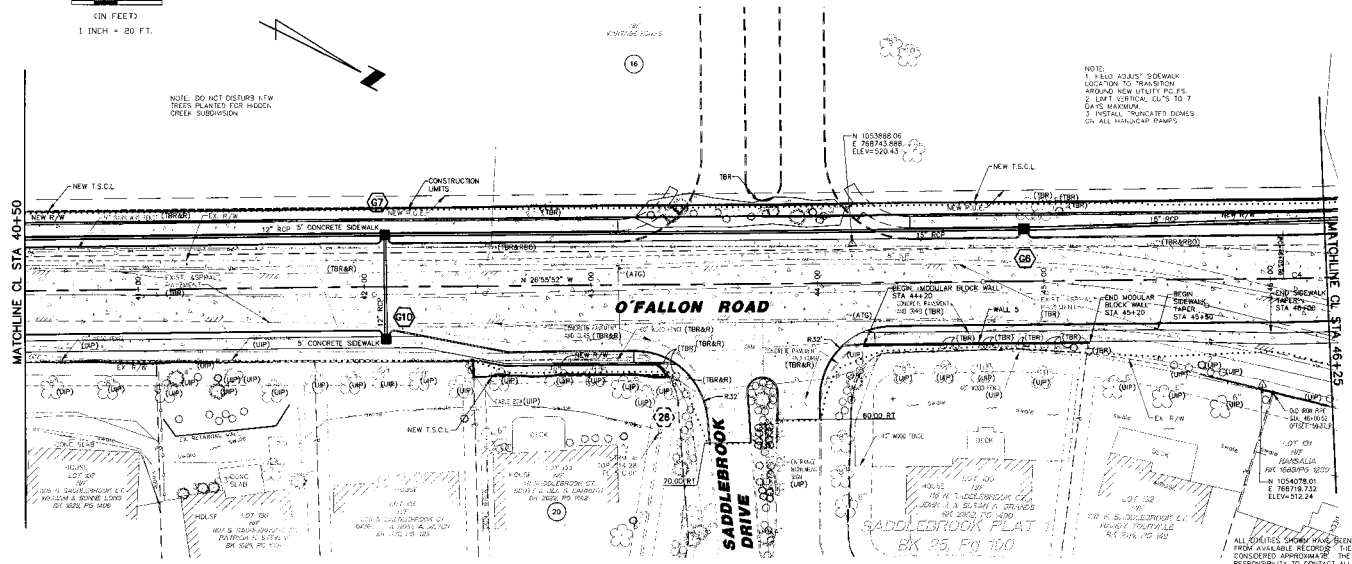
| NO. | DATE | DESCRIPTION |
|-----|------|-------------|
|     |      |             |
|     |      |             |
|     |      |             |

**C. & G. DATA**

| NO. | DATE | DESCRIPTION |
|-----|------|-------------|
|     |      |             |
|     |      |             |
|     |      |             |

NOTE: DO NOT DISTURB LFW TREES PLANNED FOR WOODEN DRAIN SUBSTITUTION

- NOTE:
1. 4' L.O.D. ADJUST SIDEWALK LOCATION TO TRANSITION AROUND NEW UTILITY P.C.
  2. LEFT VERTICAL, C&G'S TO 7 L.A.S. SIDEWALK
  3. INSTALL "BUNGALOW" DORMS ON ALL RAISED RAMP



ALL UTILITIES SHOWN HAVE BEEN LOCATED BY THE ENGINEER FROM AVAILABLE RECORDS. FIELD LOCATION SHOULD BE CONSIDERED APPROXIMATE. THE CONTRACTOR HAS THE RESPONSIBILITY TO CONTACT ALL UTILITY COMPANIES PRIOR TO CONSTRUCTION AND HAVE EXISTING UTILITIES FIELD LOCATED.

