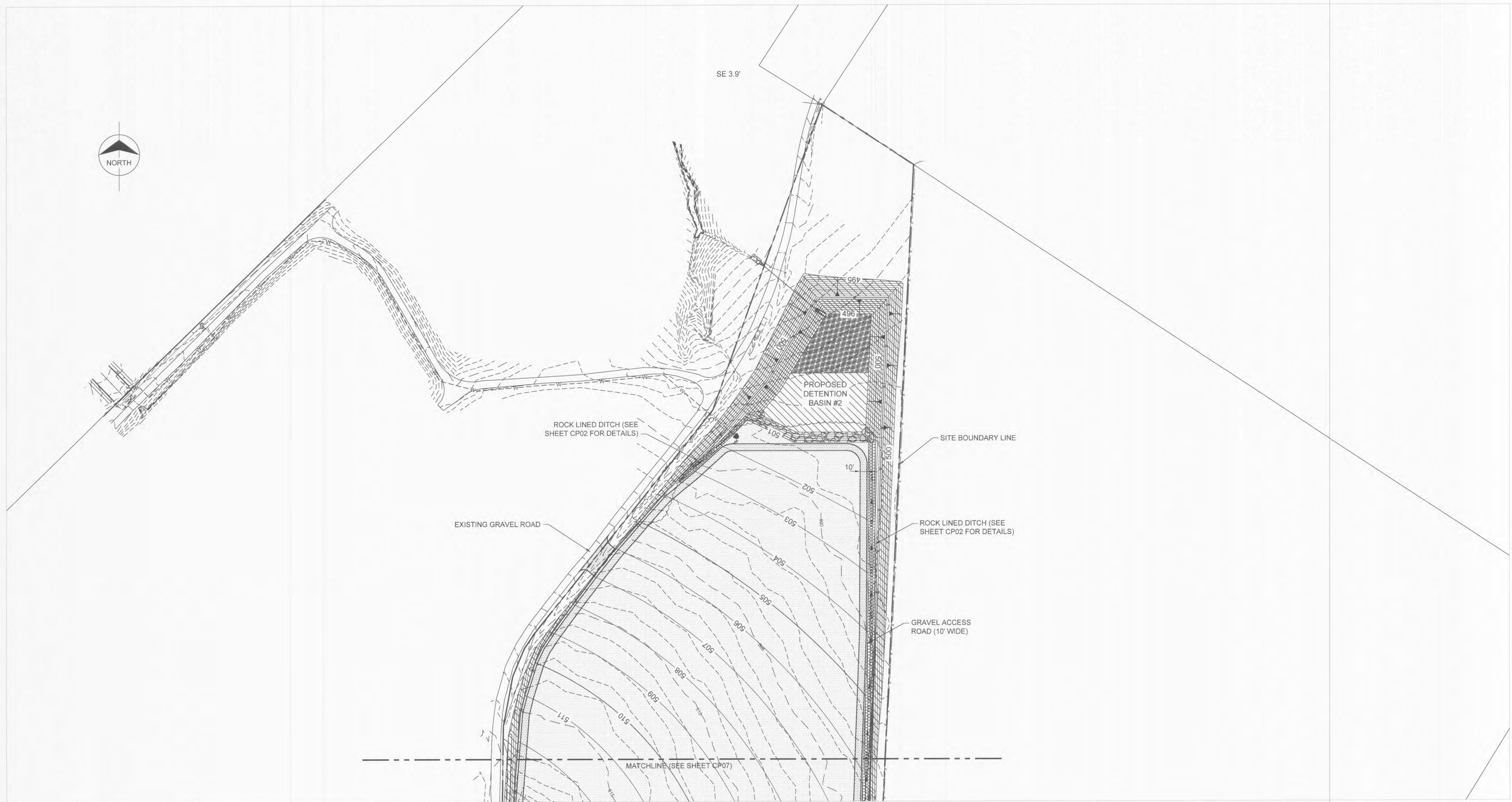


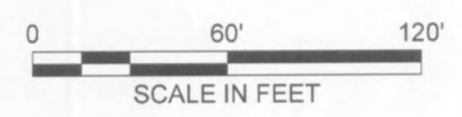


SE 3.9'

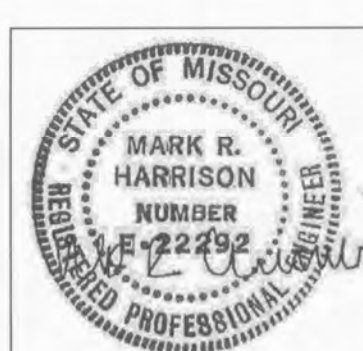


SITE SURFACING PLAN

LEGEND	
	PROPOSED ASPHALT SITE ACCESS ROAD
	PROPOSED CONCRETE SITE ENTRANCE
	PROPOSED TYPE 5 ROCK SURFACE
	PROPOSED ROCK LINED DITCH
	PROPOSED ROCK BLANKET
	PROPOSED SEEDING LIMITS
	PROPOSED DETENTION BASIN BIORETENTION



BMCD# 77051
 425 S. Woods Mill Rd.
 Chesterfield, MO 63017
 (314) 962-1000



Date: 06/27/2014
 Mark L. Harrison
 Professional Engineer
 #E-22292

REV	PROJ ID	DATE	DRWN	RVW	APPR

O'FALLON RENEWABLE ENERGY CENTER

SITE SURFACING PLAN

CP08

REV 0

