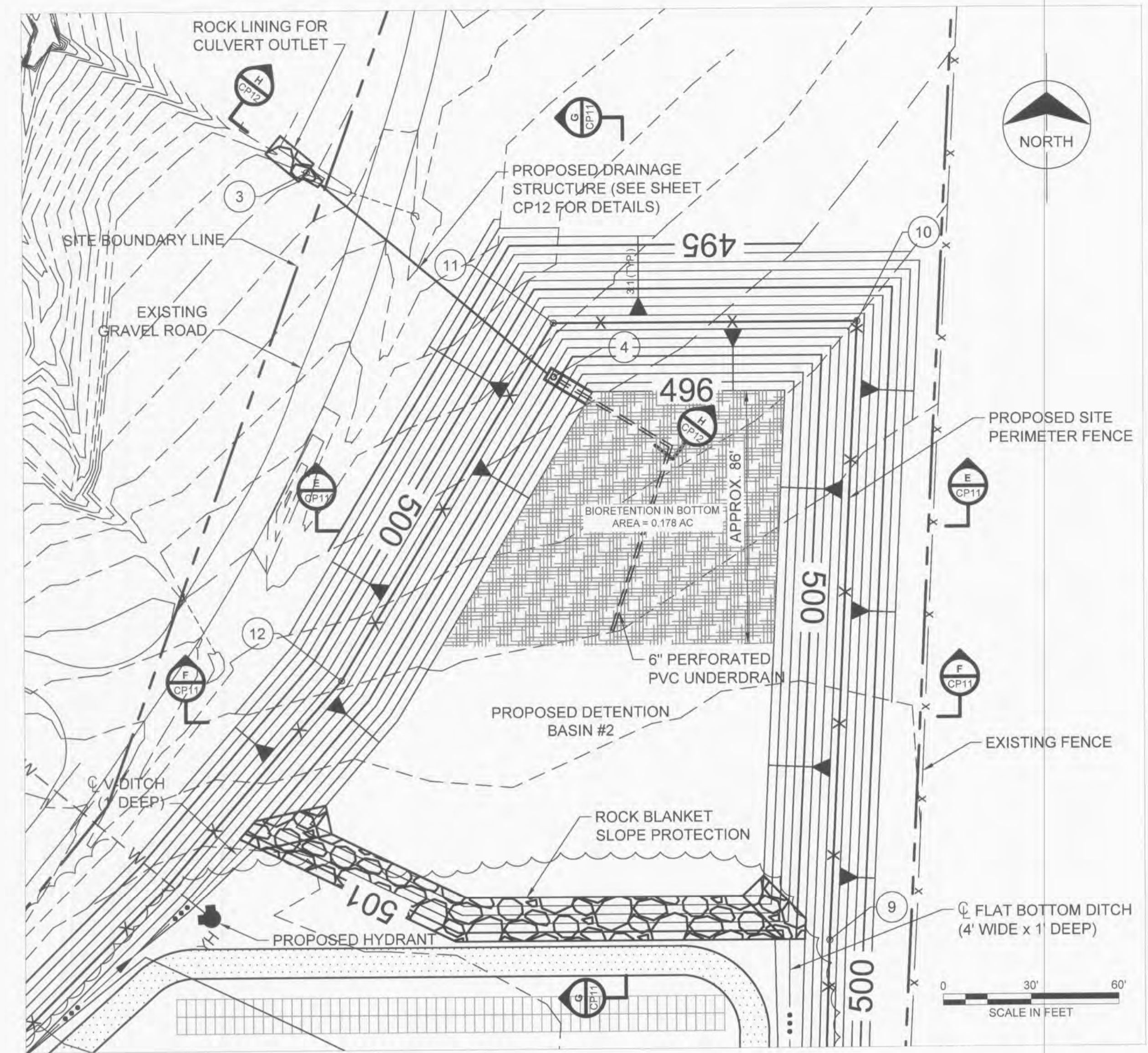


DETENTION BASIN #1 PLAN

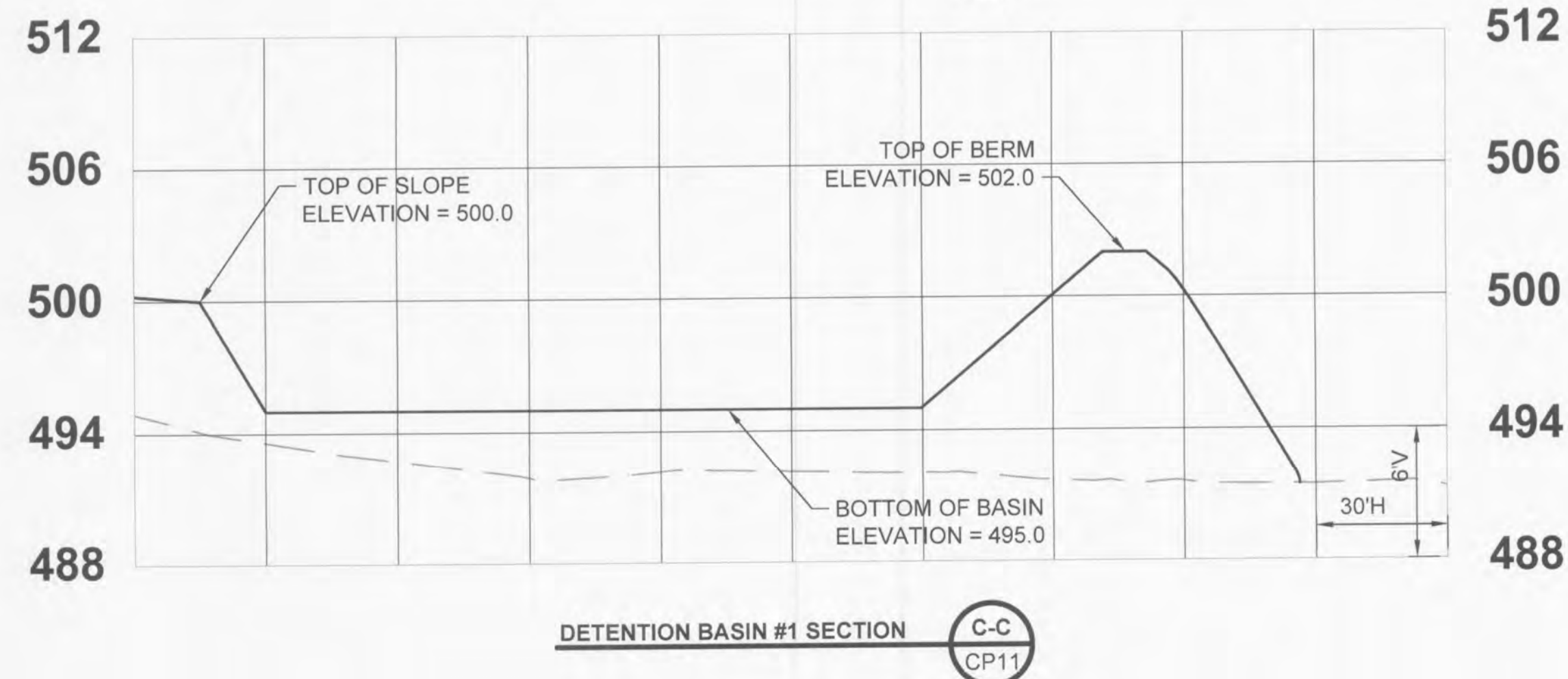
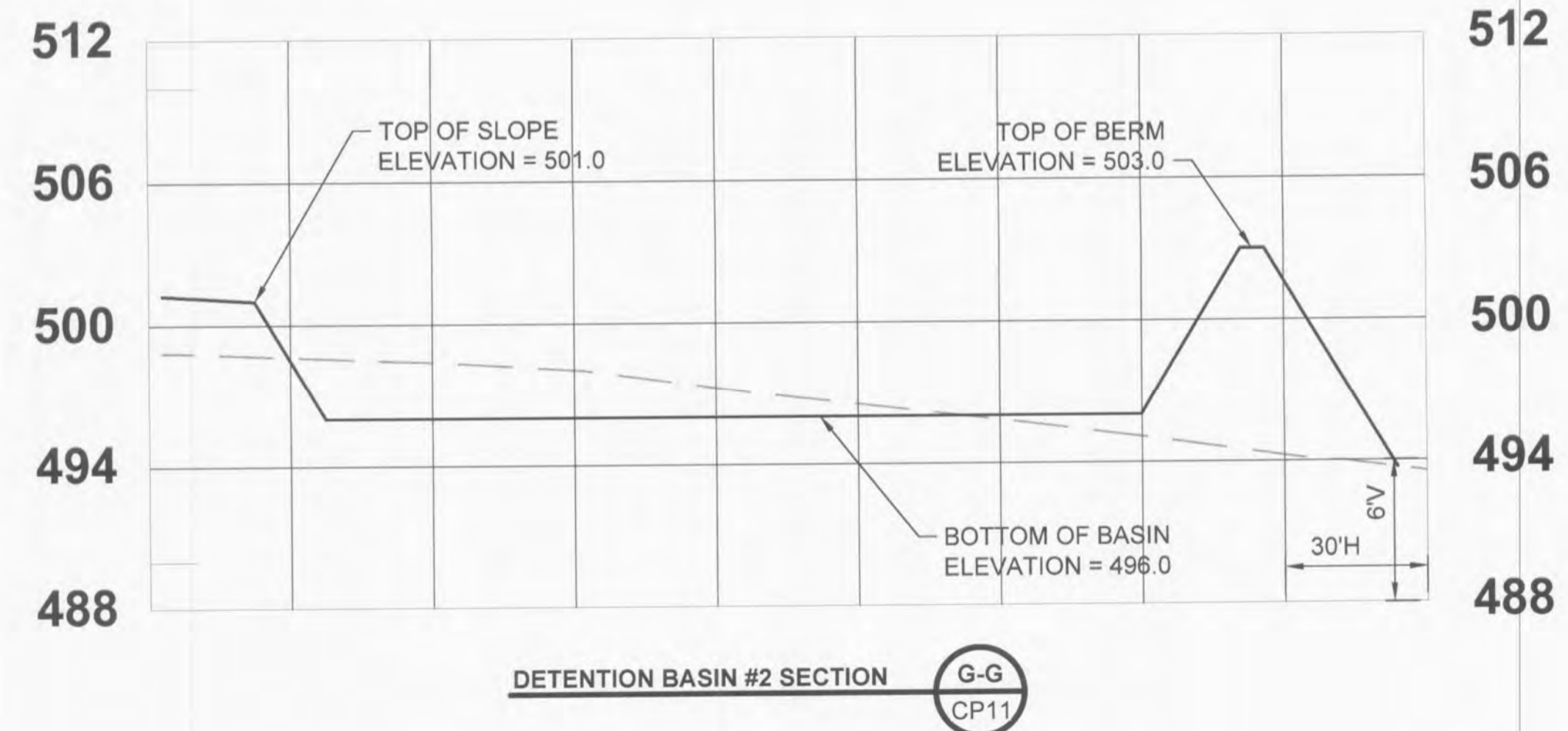
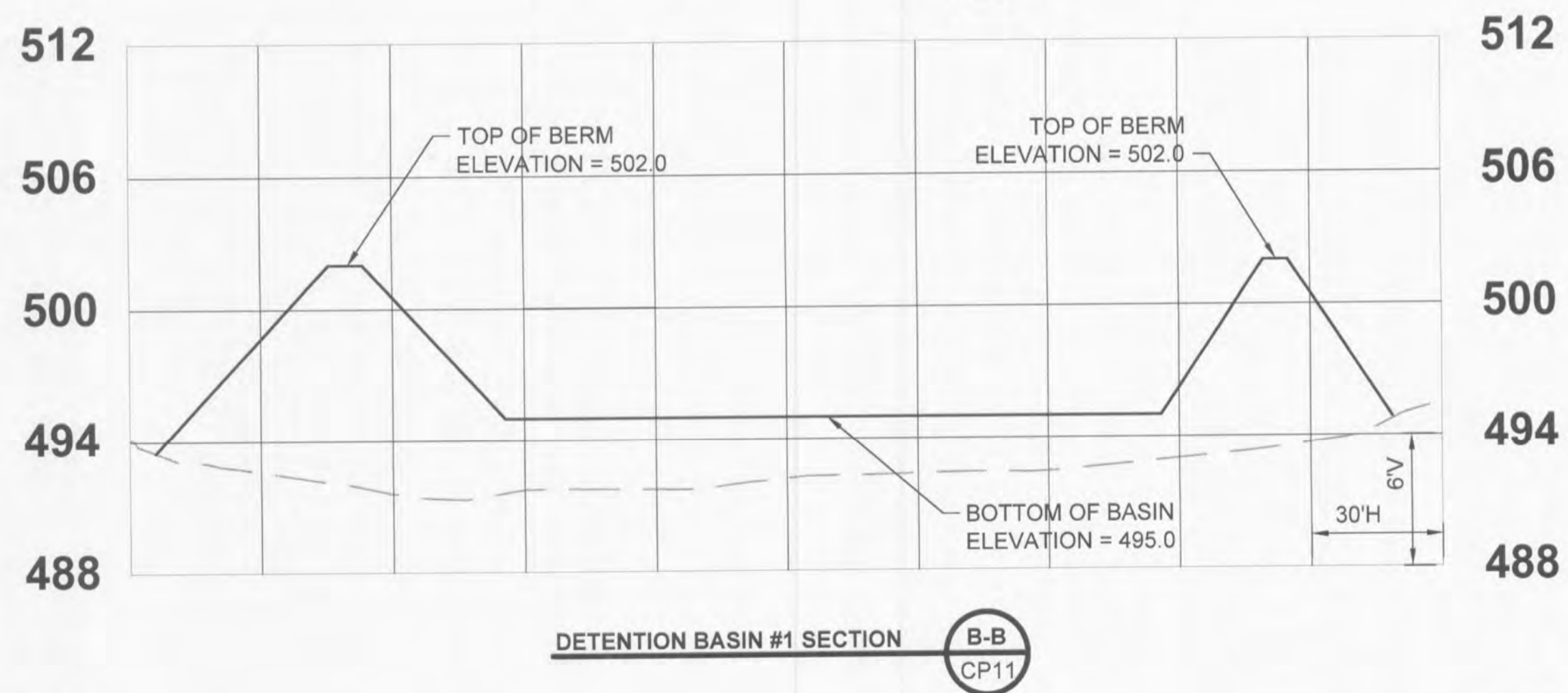
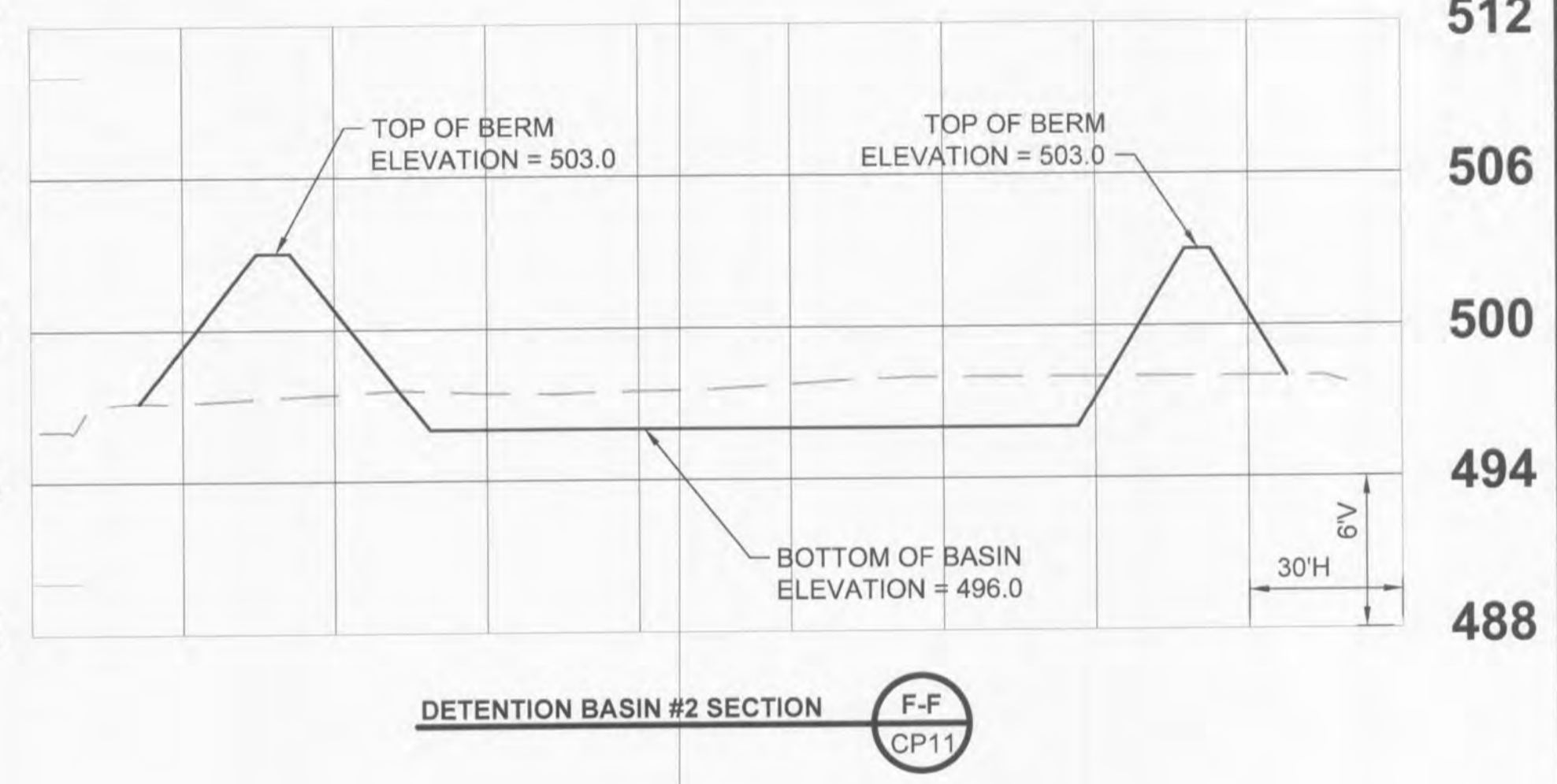
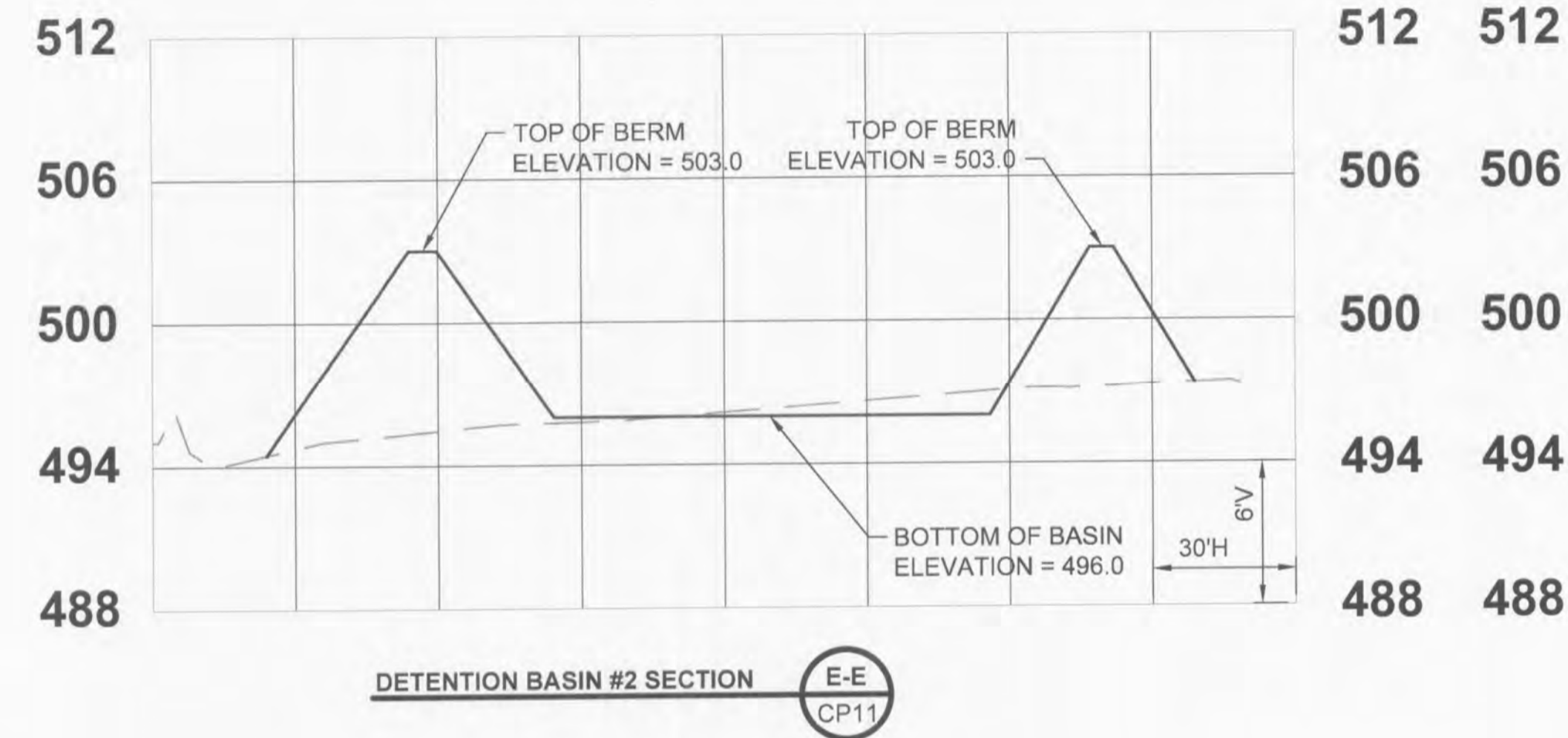
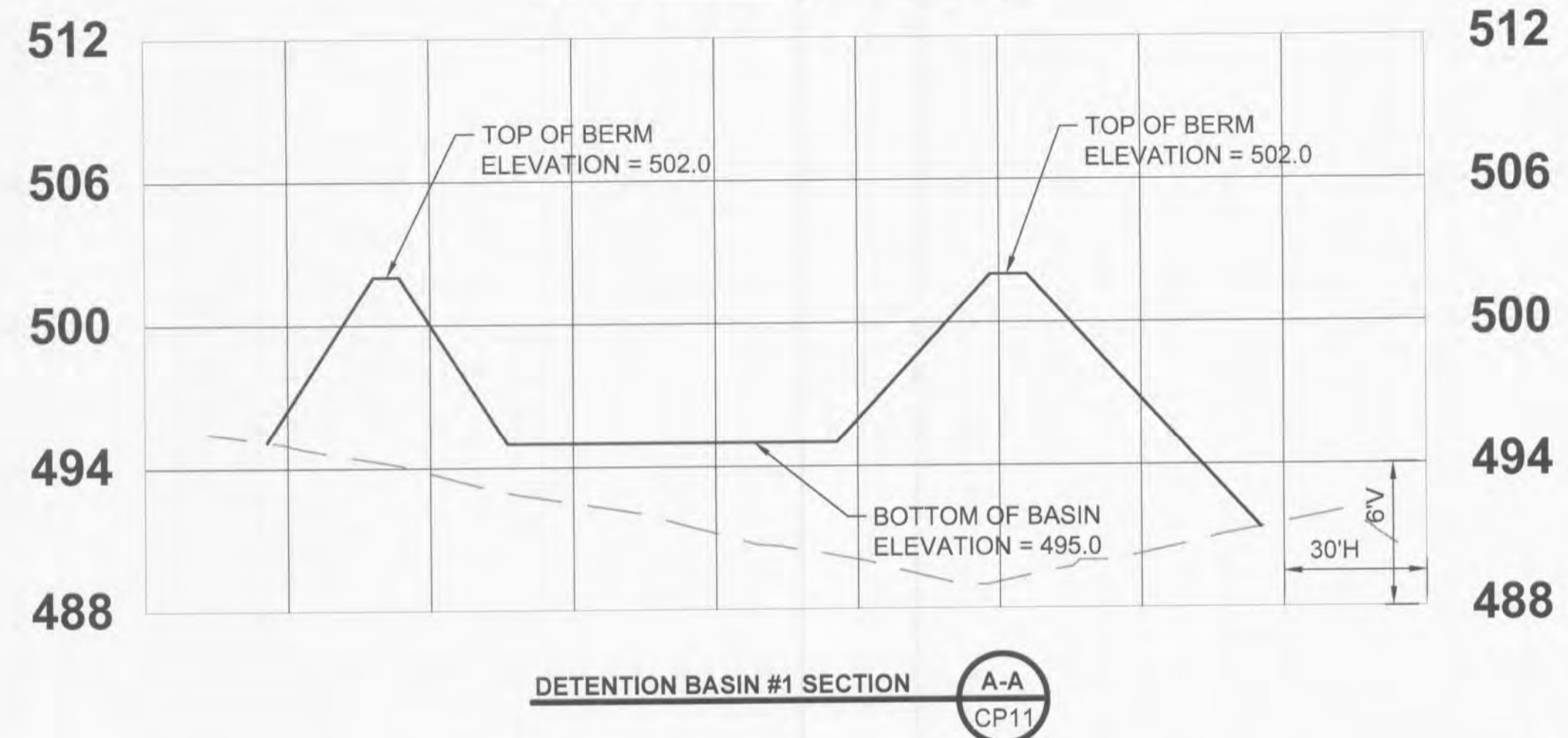
POINT	NORTHING	EASTING
1	1090013.37	770211.54
2	1089987.15	770257.66
3	1091040.14	769420.56
4	1090969.93	769504.87

POINT	NORTHING	EASTING
5	1089823.18	770152.93
6	1090008.66	770219.83
7	1090078.57	770277.34
8	1090083.57	770133.41
9	1090777.08	769598.31
10	1090988.35	769608.49
11	1090988.35	769504.87
12	1090866.86	769431.76

NOTE: COORDINATES SHOWN ARE APPROXIMATE POST LOCATIONS BASED ON THE DESIGN PLAN. ACTUAL POST LOCATIONS SHOULD BE FIELD ADJUSTED TO MATCH THE TYPICAL SECTIONS SHOWN ON SHEET CP02 BASED ON THE ACTUAL CONSTRUCTION CONDITIONS.



DETENTION BASIN #2 PLAN



NOTE: THE 6" PERFORATED PVC UNDERDRAIN PIPE SHALL EXTEND TO WITHIN 5' OF THE EDGE OF THE "BIORETENTION" ENGINEERED SOIL.

BMCD# 77051  
 4215 LAMAR BLVD  
 CHESTERFIELD, MO 63005  
 (314) 863-1500

Date: 09/27/2014  
 Steven R. Beam  
 Professional Engineer  
 #2009027915

REV	PROJ ID	DATE	DRWN	RWY	APPD

O'FALLON RENEWABLE ENERGY CENTER

DETENTION BASIN PLANS & SECTIONS

Ameren

CP11

REV 0