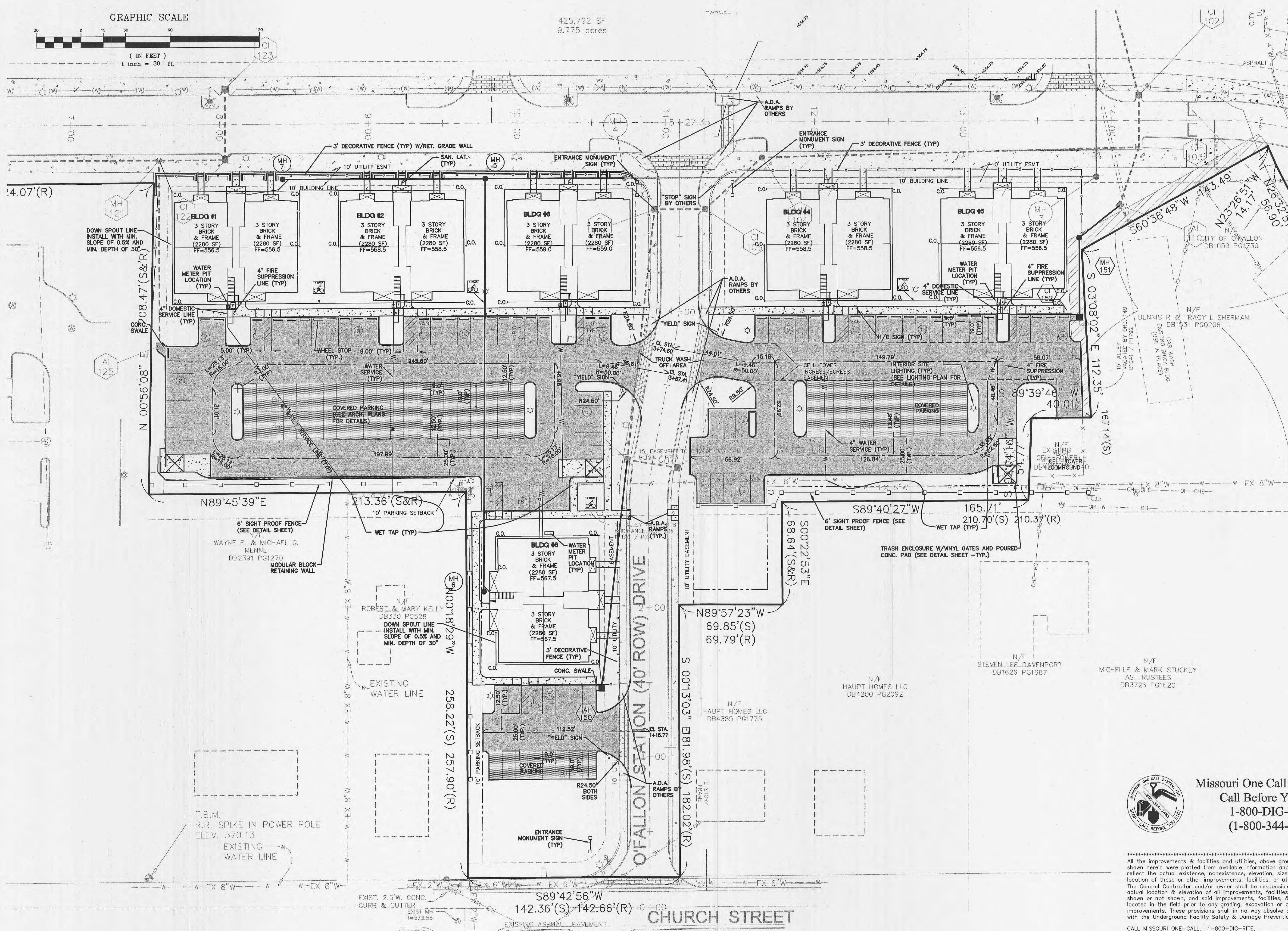


GRAPHIC SCALE

(IN FEET)
1 inch = 30' - ft

425,792 SF
9.775 acres



Disclaimer

ENGINEERS CERTIFICATION: Plans and documents prepared by the undersigned are based on information furnished by the client. The engineer assumes no responsibility for the accuracy or completeness of the information furnished. The engineer's responsibility is limited to the preparation of the plans and documents for the project. The engineer does not warrant the accuracy or completeness of the information furnished. The engineer's responsibility is limited to the preparation of the plans and documents for the project. The engineer does not warrant the accuracy or completeness of the information furnished. The engineer's responsibility is limited to the preparation of the plans and documents for the project. The engineer does not warrant the accuracy or completeness of the information furnished.

Richard G. Wischmann
Professional Engineer
No. 000000000
PE-200301059

No.	Date	Revision/Issue
2	10-24-06	CITY COMMENTS, 9-20-06
1	9-14-06	CITY COMMENTS, 7-19-06

O'Fallon Station - Residential

Site Plan

Zavradinos Professional Services, Inc.

ENGINEERING LAND SURVEYING SITE PLANNING
17818 EDISON AVE. SUITE 201
CRESTVIEW, MO 63006
636-946-5555 636-449-0740 FAX www.zavradinos.com

Greater Missouri Builders

Eugene Devore, Jr.
1551 Wall Street, Suite 220
St. Charles, MO 63303
636-946-1341
636-949-9992 Fax
e.devore@gmb-inc.com



Missouri One Call System, Inc.
Call Before You Dig!
1-800-DIG-RITE
(1-800-344-7483)

CITY/COUNTY JOB NO. P&Z 2204-06; 04/05/06	MSD P- BASEMAP	Original Issue Date 5-17-06	ZFS PM RGW
T.B.M. R.R. SPIKE IN POWER POLE ELEV. 570.13	EXIST. MH T=573.55	Drawn By FSR	Project No. 04126F
All the improvements & facilities and utilities, above ground and underground shown herein were plotted from available information and do not necessarily reflect the actual existence, nonexistence, elevation, size, type, number or location of these or other improvements, facilities, or utilities. The General Contractor and/or owner shall be responsible for verifying the actual location & elevation of all improvements, facilities, & utilities, shown or not shown, and said improvements, facilities, & utilities shall be located in the field prior to any grading, excavation or construction of any improvements. These provisions shall in no way absolve any part from complying with the Underground Facility Safety & Damage Prevention Act, Chapter 319, RSMo.		CALL MISSOURI ONE-CALL, 1-800-DIG-RITE.	