

REVISIONS	BY

landscape
TECHNOLOGIES

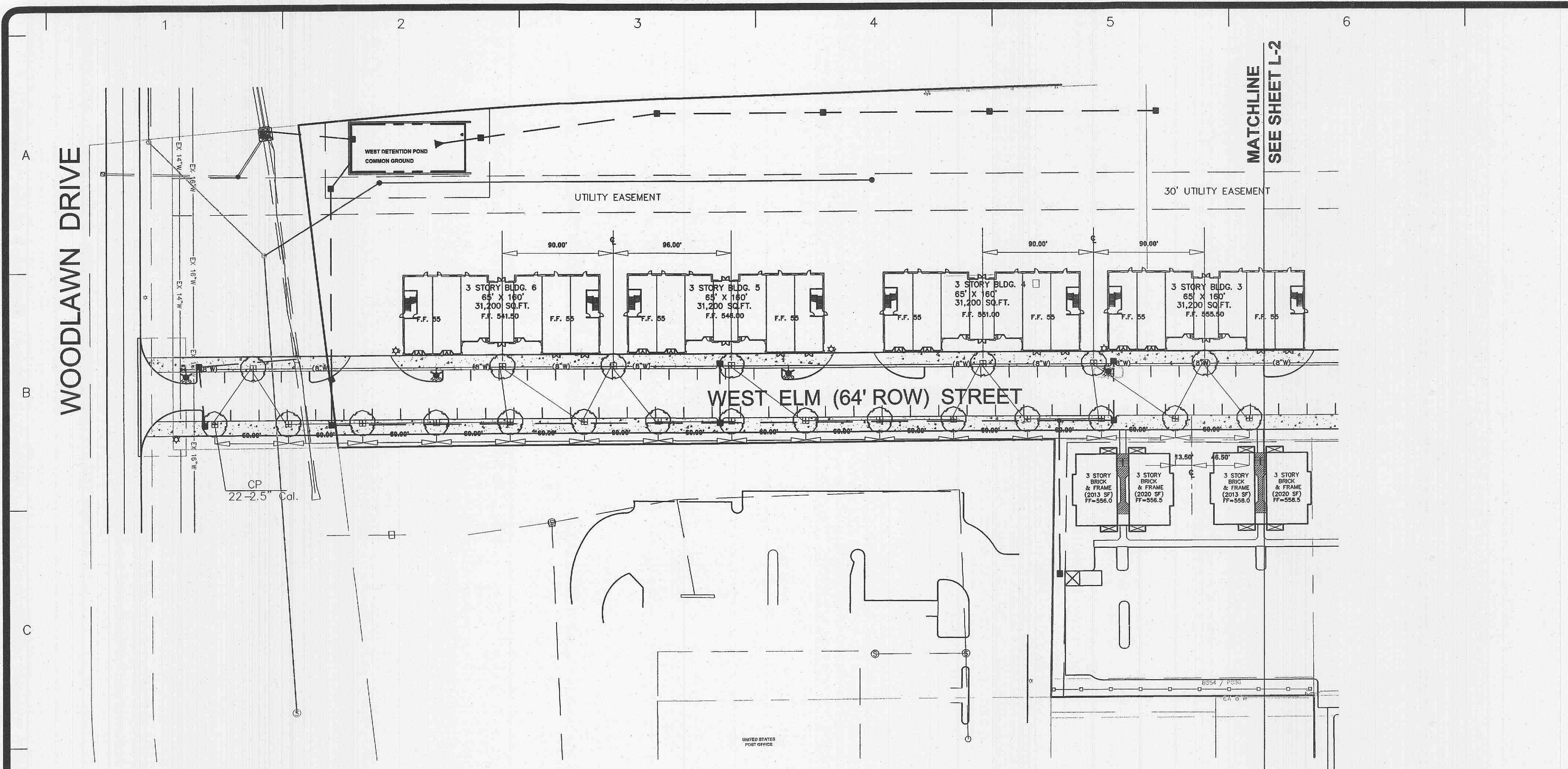
(636) 928-1250
67 Jacobs Creek Drive
St. Charles, Missouri 63304
Fax: (636) 928-4563

STREETSCAPE PLANTING PLAN FOR THE PROPOSED
O' Fallon Station
O' FALLON, MISSOURI

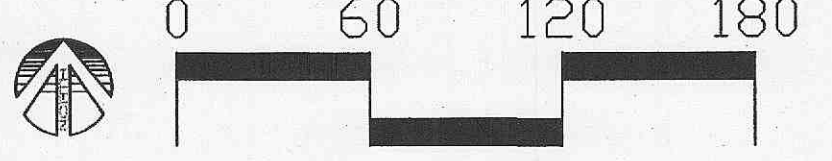
DRAWN	R. MARDIS
CHECKED	RJM
DATE	MARCH 28, 2006
SCALE	1"=60'
JOB No.	2006-113
SHEET	L-1
OF TWO SHEETS	

NOTES:

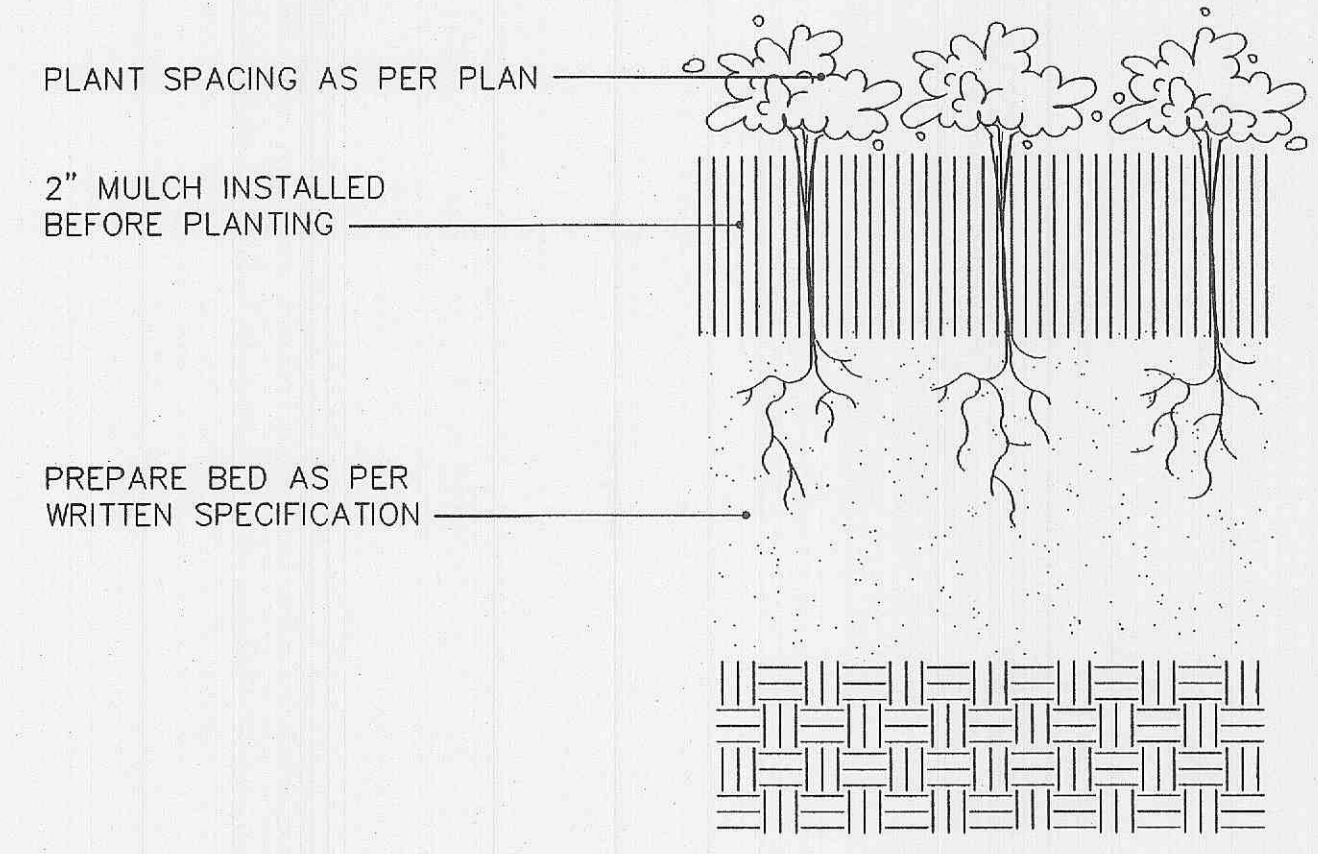
- 1.) All natural vegetation shall be maintained where it does not interfere with construction or the permanent plan of operation. Every effort possible shall be made to protect existing structures or vegetation from damage due to equipment usage. Contractor shall at all times protect all materials and work against injury to public.
- 2.) The landscape contractor shall be responsible for any coordination with other site related work being performed by other contractors. Refer to architectural drawings for further coordination of work to be done.
- 3.) Underground facilities, structures and utilities must be considered approximate only. There may be others not presently known or shown. It shall be the landscape contractor's responsibility to determine or verify the existence of and exact location of the above (Call 1-800-DIG-RITE).
- 4.) Plant material are to be planted in the same relationship to grade as was grown in nursery conditions.
- 5.) All mulch to be shredded bark mulch at 3" depth (after compaction) unless otherwise noted. Mulch shall be clean and free of all foreign materials.
- 6.) It shall be the landscape contractor's responsibility to:
 - A.) Verify all existing and proposed features shown on the drawings prior to commencement of work.
 - B.) Report all discrepancies found with regard to existing conditions or proposed design to the landscape architect immediately for a decision.
 - C.) Stake the locations of all proposed plant material and obtain the approval of the owner's representative or landscape architect prior to installation.
- 7.) All planting beds shall be cultivated to 6" depth minimum and graded smooth immediately before planting of plants. Plant perennials to within 18" of trunk of trees or shrubs planted within the area.
- 8.) All plant material (excluding ground cover, perennials and annuals) are to be warranted for a period of 12 months after installation at 100% of the installed price.
- 9.) Items shown on this drawing take precedence over the material list. It shall be the landscape contractor's responsibility to verify all quantities and conditions prior to implementation of this plan. No substitutions of types or size of plant materials will be accepted without written approval from landscape architect.



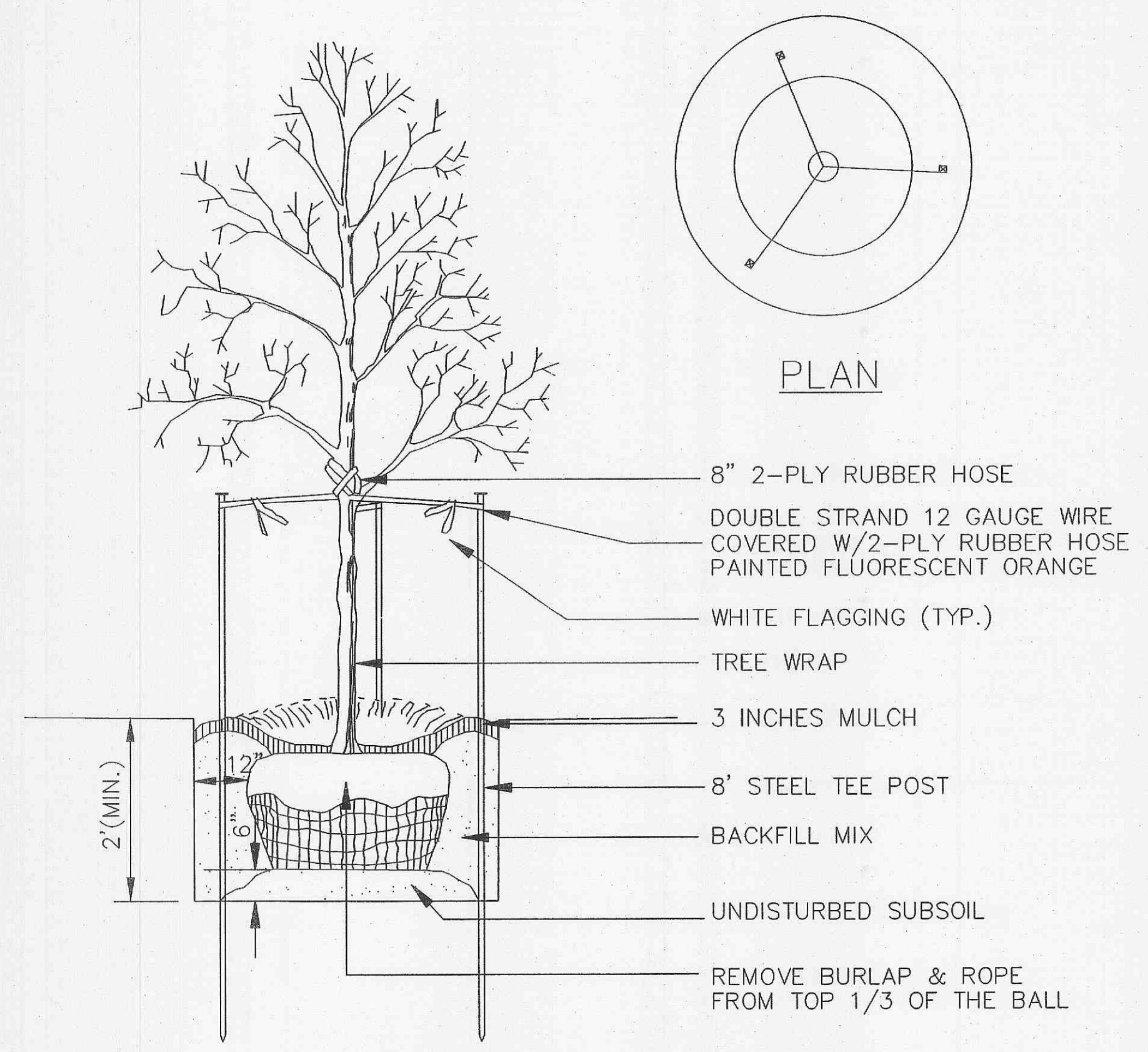
PLANTING PLAN WEST SECTOR



NOTE:
5' X 5' TREE GRATES TO BE PROVIDED BY OTHERS. LANDSCAPE CONTRACTOR SHALL SUBMIT ALTERNATE BID #1 (SEE SHEET L-2) TO BE PLANTED IN LIEU OF TREE GRATES



PERENNIAL / GCOVER PLANTING
N.T.S.



DECIDUOUS TREE PLANTING
N.T.S.

NOTE: USE SHREDDED BARK MULCH ONLY