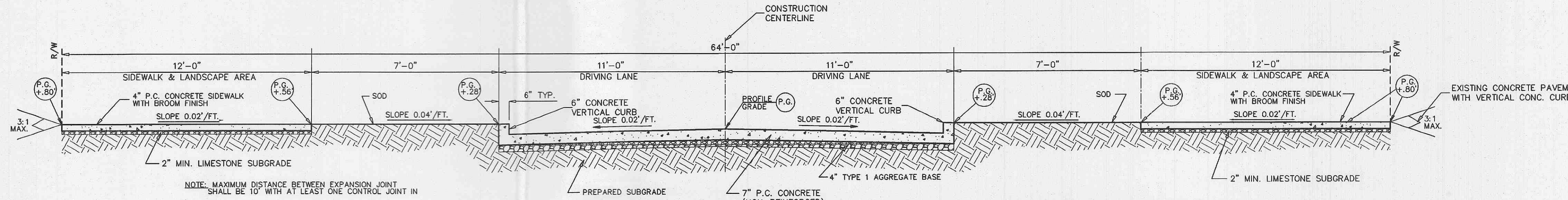
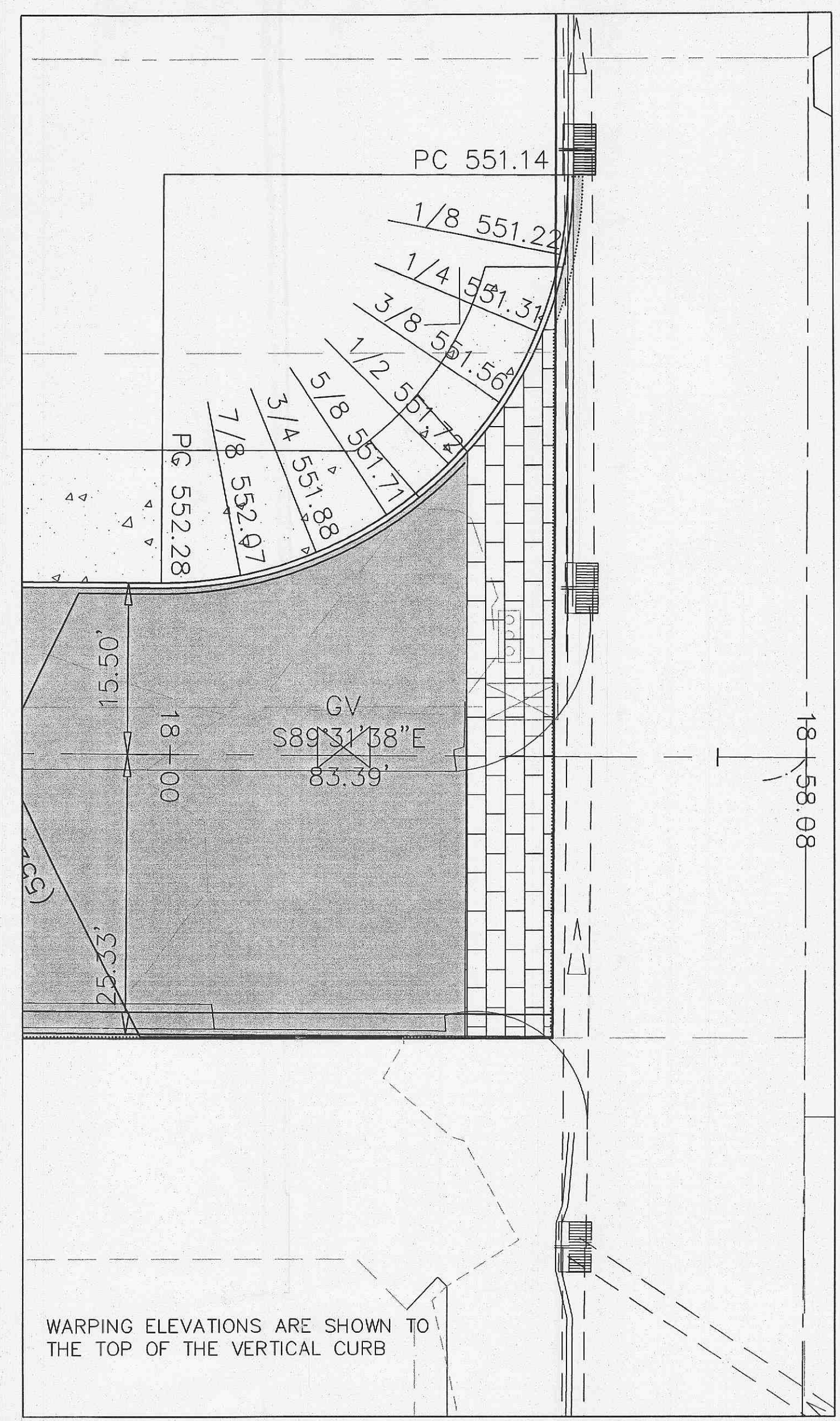


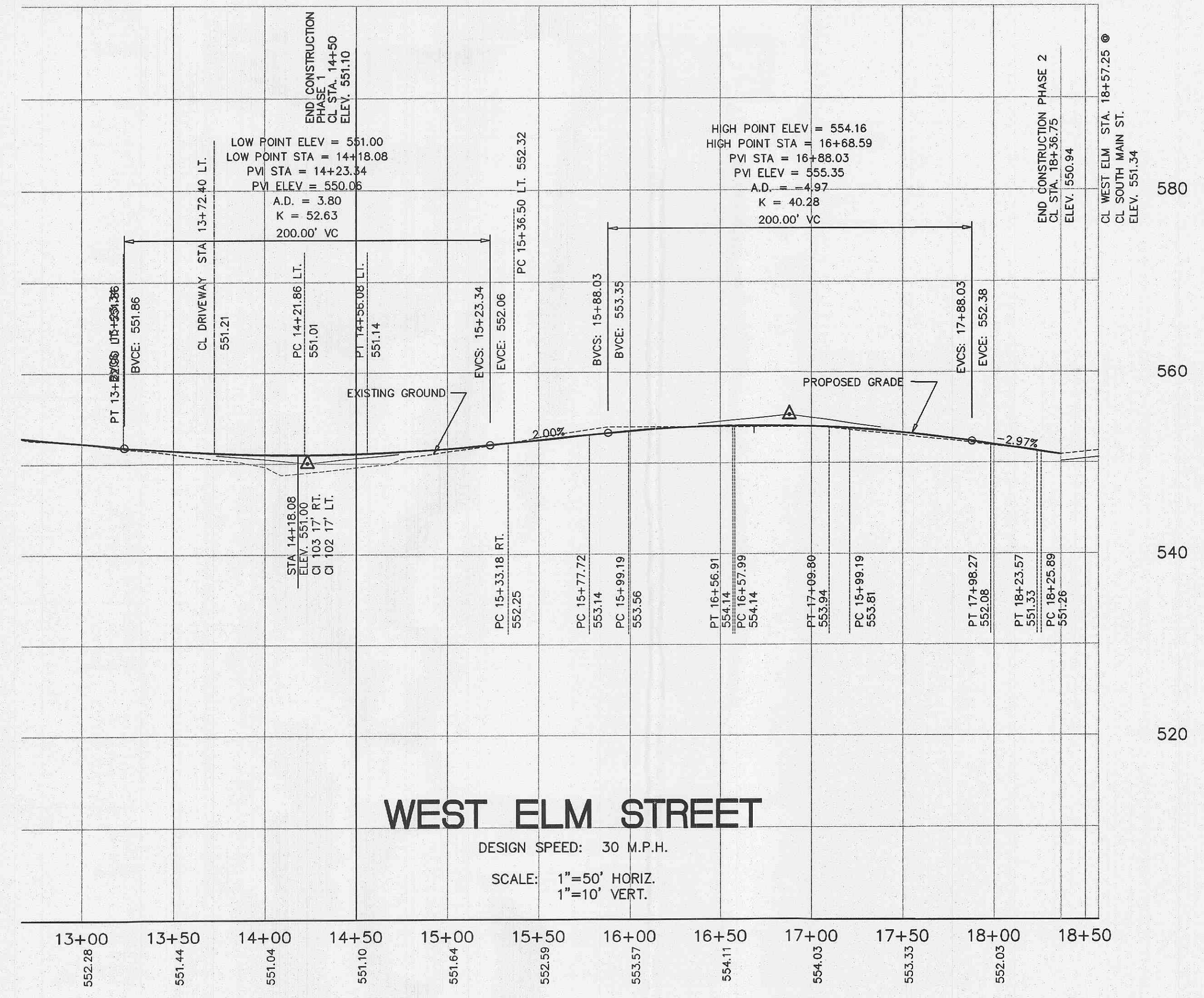
WEST ELM ST. 64' R.O.W.
TYPICAL PAVEMENT - SECTION D-D
NOT TO SCALE
FUTURE PHASE 2



WEST ELM ST. 64' R.O.W.
TYPICAL PAVEMENT - SECTION C-C
NOT TO SCALE



WARPIING DETAIL FOR INTERSECTION
OF S. MAIN ST. AND WEST ELM ST.
SCALE: 1:10



WEST ELM STREET
DESIGN SPEED: 30 M.P.H.
SCALE: 1"=50' HORIZ.
1"=10' VERT.

NOTE:
SEE DETAIL SHT FOR JOINTS, CURBS
AND SIDEWALK DETAILS



Missouri One Call System, Inc.
Call Before You Dig!
1-800-DIG-RITE
(1-800-344-7483)

All the improvements & facilities and utilities, above ground and underground shown herein were plotted from available information and do not necessarily reflect the actual existence, nonexistence, elevation, size, type, number or location of these or other improvements, facilities, or utilities. The General Contractor and/or owner shall be responsible for verifying the actual location & elevation of all improvements, facilities, & utilities, shown or not shown, and said improvements, facilities, & utilities shall be located in the field prior to any grading, excavation or construction of any improvements. These provisions shall in no way obviate any part from complying with the Underground Facility Safety & Damage Prevention Act, Chapter 319, RSMo. CALL MISSOURI ONE-CALL, 1-800-DIG-RITE.

The Professional Engineer's and/or Professional Land Surveyor's responsibility is limited to plans and other documents prepared by him/her and his/her firm. It is the responsibility of the Engineer and Surveyor to verify the accuracy of all data furnished to them. This sheet is a part of a set of plans and specifications for a project. It is not to be used for any other purpose. This sheet is not to be used for any other purpose. This sheet is not to be used for any other purpose.

No.	Date	Revision/Issue
1	08-07-06	Per City Comment Letter, dated 07/24/06
2	08-11-06	Client/City Revisions
3	08-29-06	Per City Comment Letter, dated 08/23/06

O'Fallon Station Infrastructure Phase 2
Street Profile, Warpings, Typical Sections
Zavradinos & Polk inc.
engineers & surveyors
17813 Edison Ave., Suite 201 • Chesterfield, MO 63005
636-946-5555 • 636-449-0148 Fax • www.zavradinos.com

Client
O'Fallon Station, LLC
412 Jungermann Road, Suite 140
St. Peters, MO 63376
636-496-7000 Fax
636-496-7000
wholman@ogreastate.com

City/County Job No:
P & Z No. 2204.03
MSD P-
BASEMAP
Proj Manager
R. Wischmann
rich@zavradinos.com
CAD Filename
04126-Infrastructure Phz 2.dwg
Original Issue Date
06/13/06
Project No.
04126-D
Sheet
4

P:\land\projects\04126-O'FALLON STATION INFRASTRUCTURE PHASE 2\PROFILES\04126-03-2006-550A.dwg