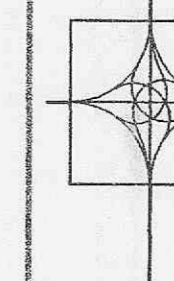


**ENGINEERING  
PLANNING  
SURVEYING**  
1052 South Cloverleaf Drive  
St. Peters, MO. 63376-6445  
314-928-5562  
FAX 928-1718

DATE: 04/28/2004	
DESIGN BY: TMA	
DRAWN BY: TMA	
PROJECT NO.: 99-10667D	
SHEET NO.	TOTAL SHEETS
14	20

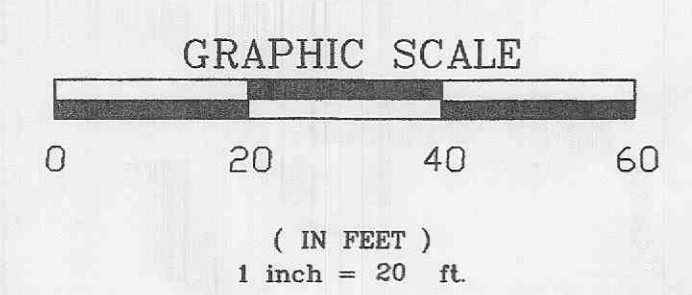
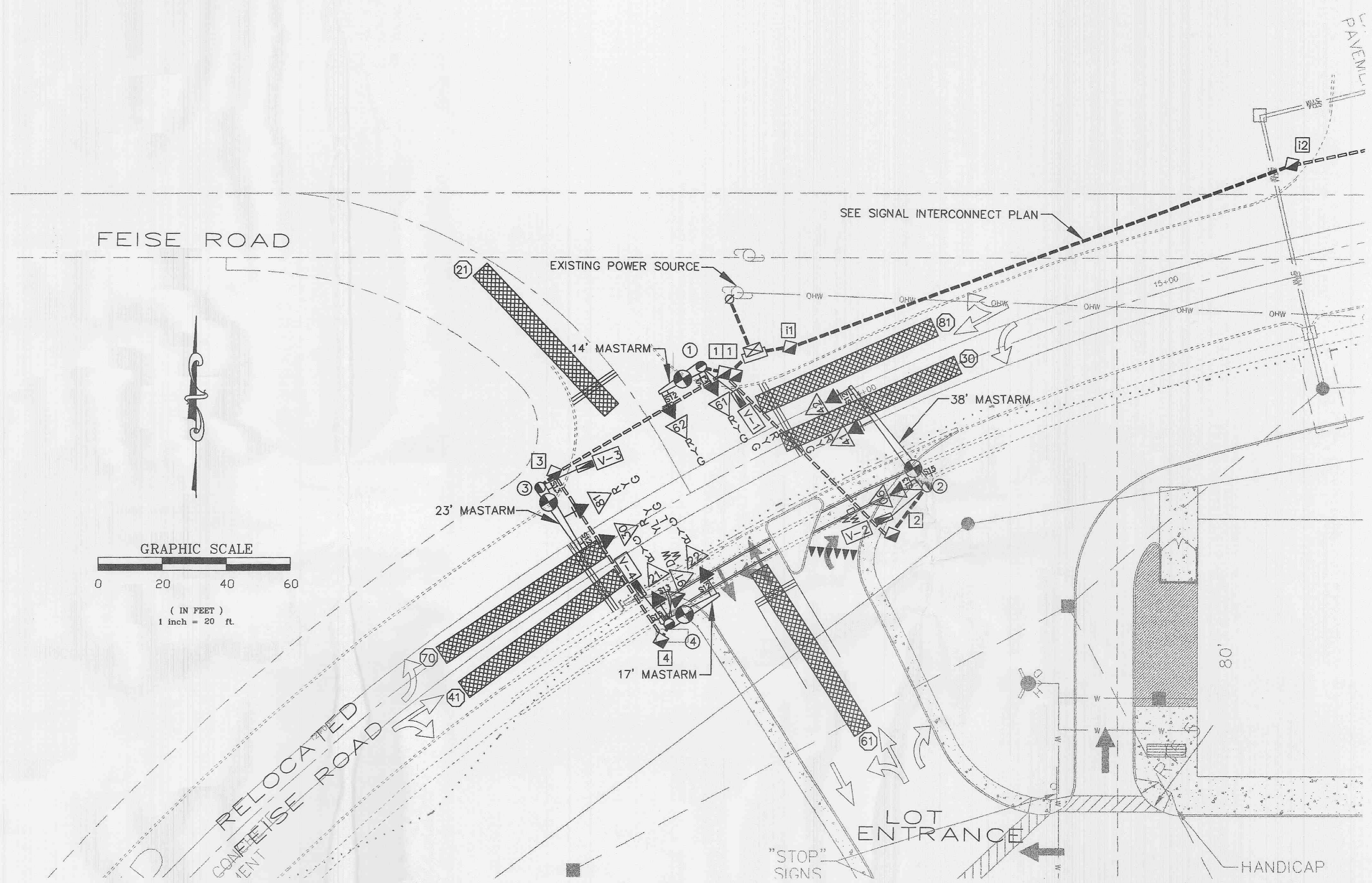


**EDSI**  
ENGINEERING DESIGN SOURCE, INC.  
1415 ELBRIDGE PAYNE RD.  
CHESTERFIELD, MO. 63017  
SUITE 255  
(636) 537-5585

**O'FALLON WALK  
TRAFFIC SIGNAL PLAN**

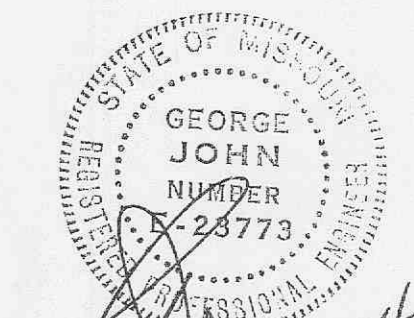
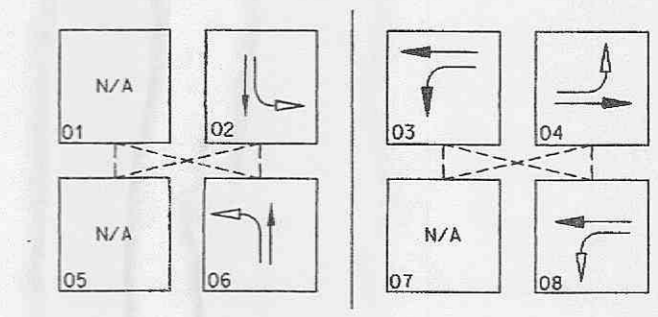
**LEGEND**

- LED & CONVENTIONAL SIGNAL HEAD WITH BACKPLATE
  - SIGNAL HEAD - PEDESTRIAN
  - STOP LINE
  - LANE USE
  - TYPE A BASE
  - WOOD POLE WITH DOWN GUY
  - CONTROLLER WITH PAD AND METER
  - CONCRETE PULL BOX, TYPE 1, PREFORMED
  - DOUBLE CONCRETE PULL BOX, TYPE 1, PREFORMED
  - SERVICE POLE OR PEDESTAL AND POWER SUPPLY
  - MAST ARM WITH SIGNAL HEADS AND 150 WATT LUMINAIRE
  - MAST ARM WITH OVERHEAD SIGN
  - VIDEO DETECTION ZONE
  - VIDEO DETECTION CAMERA
  - S12 LEFT TURN YIELD ON GREEN SIGN
  - S13 STREET OR ROAD NAME SIGN
  - S15 PUSH BUTTON FOR WALK SIGNAL SIGN
  - OVER HEAD WIRE
  - NEW ROW
  - EXISTING UTILITY POLE
  - PUSH BUTTON DETECTOR
  - CONDUIT IN TRENCH
  - CONDUIT PUSHED
  - SIGNAL FACE NUMBER
  - POST NUMBER
  - DETECTOR NUMBER
  - CONCRETE PULL BOX NUMBER
  - DOUBLE CONCRETE PULL BOX NUMBER
  - VIDEO DETECTION CAMERA NUMBER
  - V-1
  - R RED LENS (CIRCULAR)
  - Y YELLOW LENS (CIRCULAR)
  - YL YELLOW LEFT ARROW LENS
  - G GREEN LENS (CIRCULAR)
  - S GREEN STRAIGHT ARROW LENS
  - L GREEN LEFT ARROW LENS
- ALL 12 INCH WITH TUNNEL VISOR



**GENERAL NOTES**

1. UNDERGROUND UTILITIES SHOWN HEREON WERE PLOTTED FROM AVAILABLE INFORMATION AND DO NOT NECESSARILY REFLECT THE ACTUAL EXISTENCE, NONEXISTENCE, SIZE, TYPE, NUMBER OR LOCATION OF THESE OR OTHER UTILITIES. THE GENERAL CONTRACTOR SHALL BE RESPONSIBLE FOR VERIFYING THE ACTUAL LOCATION OF ALL UNDERGROUND UTILITIES, SHOWN OR NOT SHOWN. AND SAID UTILITIES SHALL BE LOCATED IN THE FIELD PRIOR TO ANY GRADING, EXCAVATION OR CONSTRUCTION OF IMPROVEMENTS. THESE PROVISIONS SHALL IN NO WAY ABSOLVE ANY PARTY FROM COMPLYING WITH THE UNDERGROUND FACILITY SAFETY AND DAMAGE PREVENTION ACT, CHAPTER 319, RSMo.
2. OVERHEAD UTILITIES SHALL BE RAISED WHERE NECESSARY TO FACILITATE THE INSTALLATION OF MAST ARMS.
3. CONTRACTOR SHALL NOT INSTALL POWER CONDUIT OR CABLES UNTIL MEETING WITH POWER COMPANY TO DETERMINE FINAL LOCATION.
4. SEE CIVIL PLANS FOR ALL PROPOSED SIDEWALKS, ACCESSIBLE RAMPS, AND CURB LOCATIONS.
5. SEE STRIPING PLANS FOR PROPOSED STRIPING.
6. ALL SIGNAL ITEMS AND CONSTRUCTION METHODS SHALL COMPLY WITH THE MISSOURI DEPARTMENT OF TRANSPORTATION CODES AND SPECIFICATIONS UNLESS NOTED OTHERWISE.



RELOCATED FEISE ROAD & FEISE ROAD  
INTERSECTION

PLAN SHEET