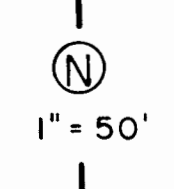
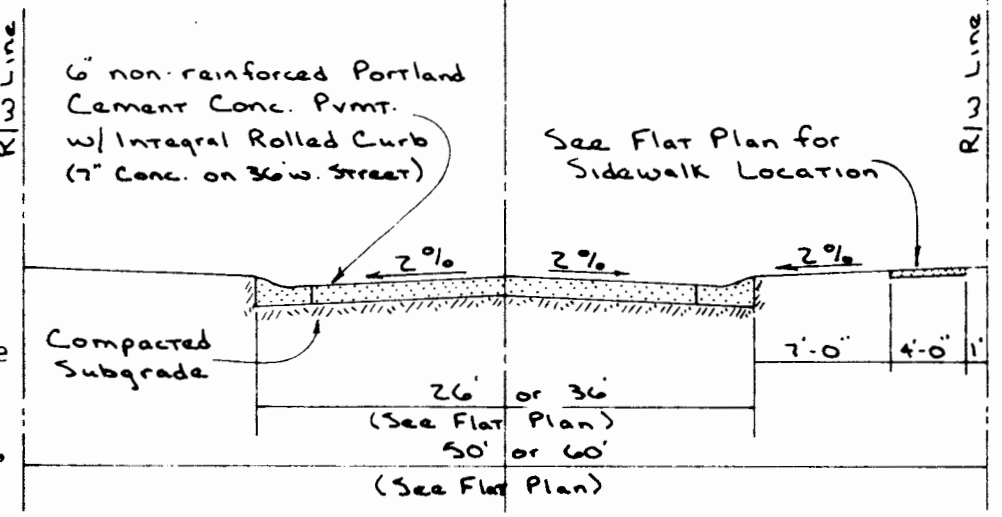


(Lot 306)

NOTE
Improvements
for Lots 305-309
completed with
Plat 2b.

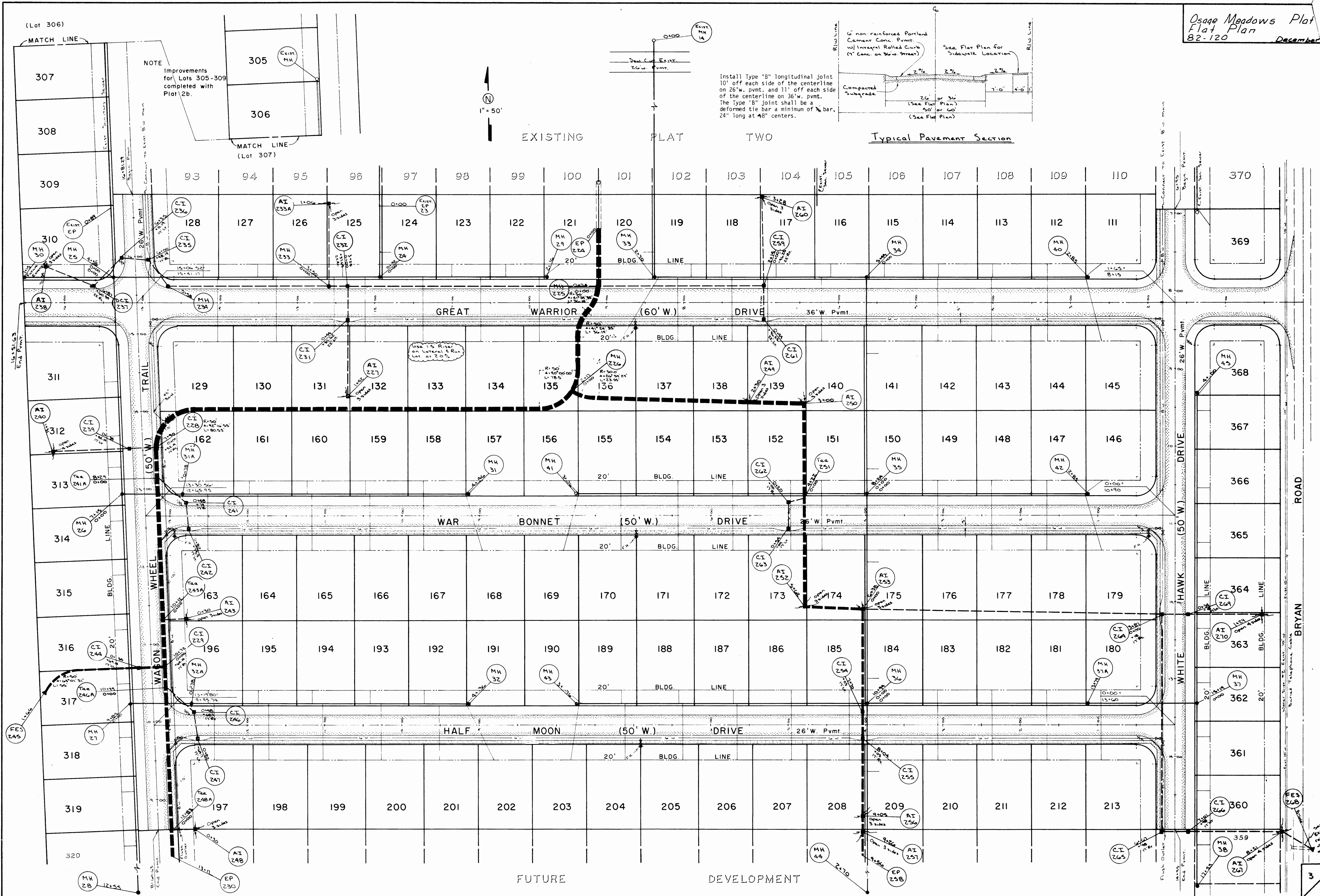


Install Type "B" longitudinal joint
10' off each side of the centerline
on 26'w. pvmt. and 11' off each side
of the centerline on 36'w. pvmt.
The Type "B" joint shall be a
deformed tie bar a minimum of 3/8 bar,
24" long at 48" centers.



EXISTING PLAT TWO

Typical Pavement Section



FUTURE DEVELOPMENT