

(Lot 306)

MATCH LINE

NOTE
Improvements
for Lots 305-309
completed with
Plat 2b.

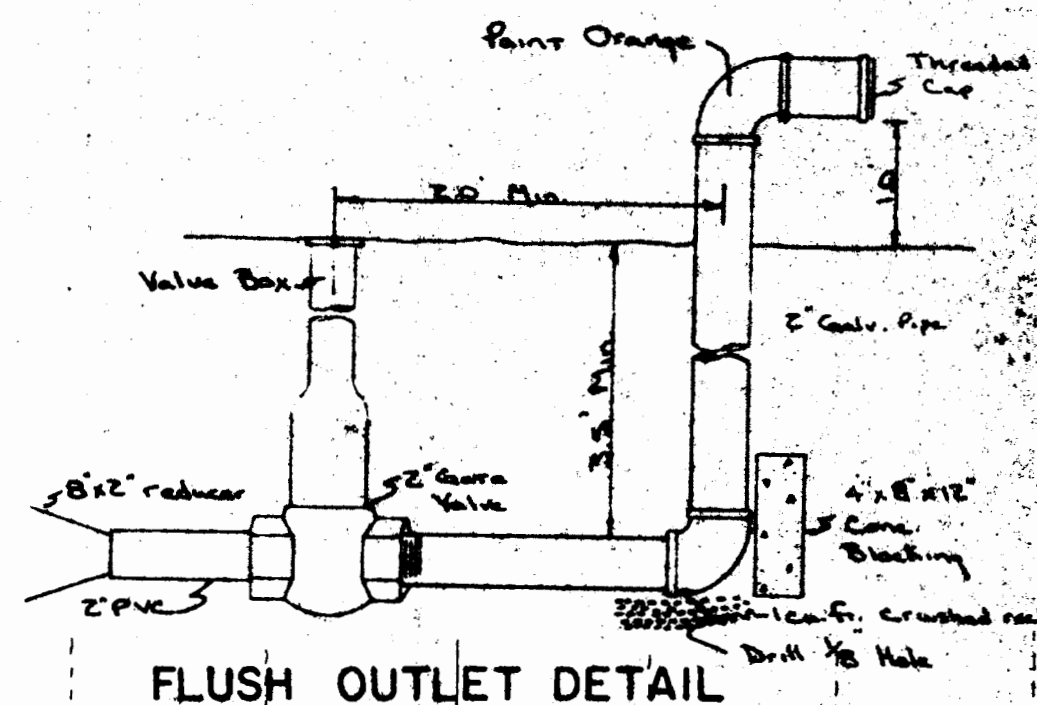
305

306

MATCH LINE
(Lot 307)

1" = 50'

EXISTING PLAT TWO



FLUSH OUTLET DETAIL



FUTURE

DEVELOPMENT

Note:
Minimum back slopes of 3:1 shall be used.
Allow for Positive Drainage during Grading.