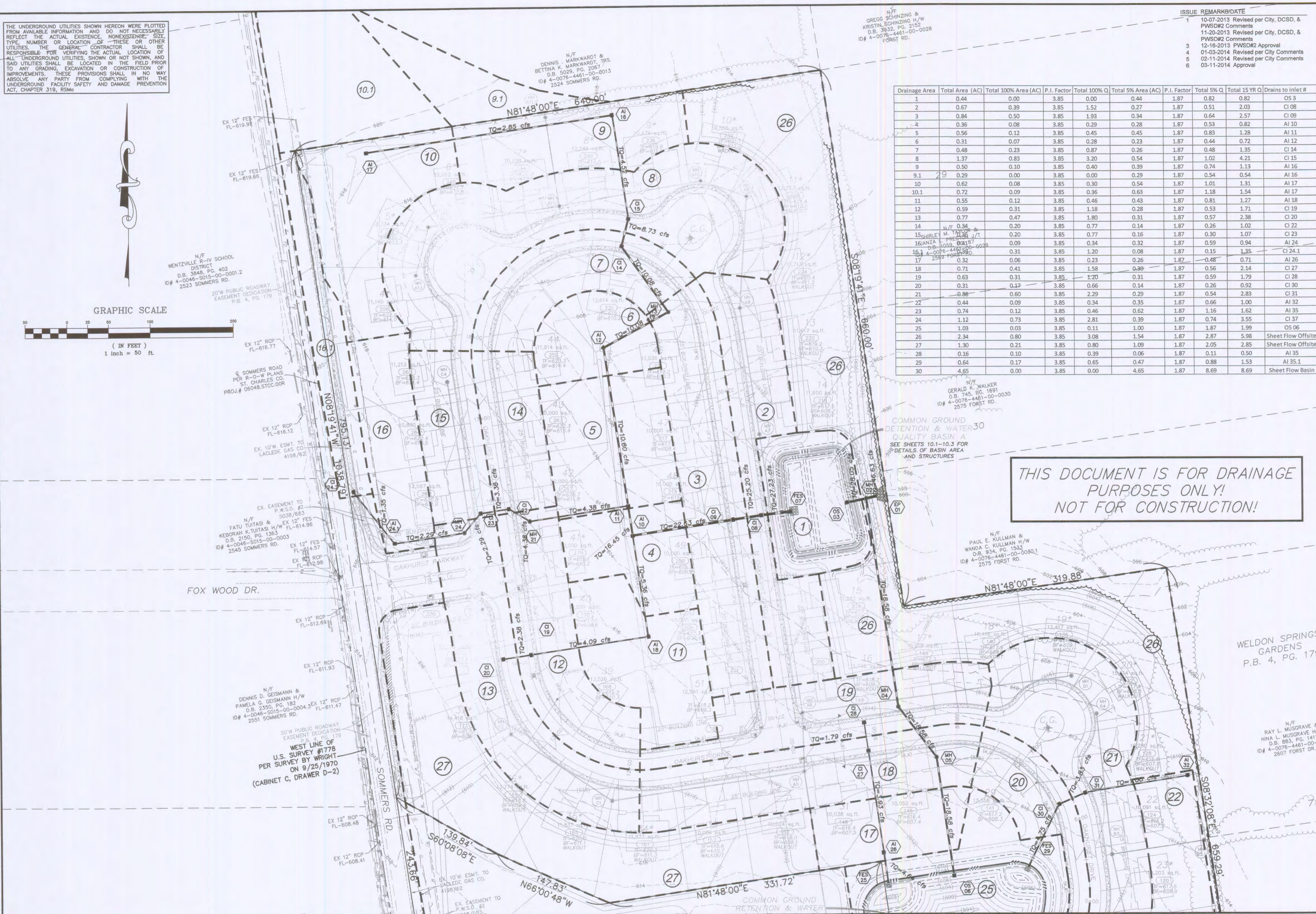
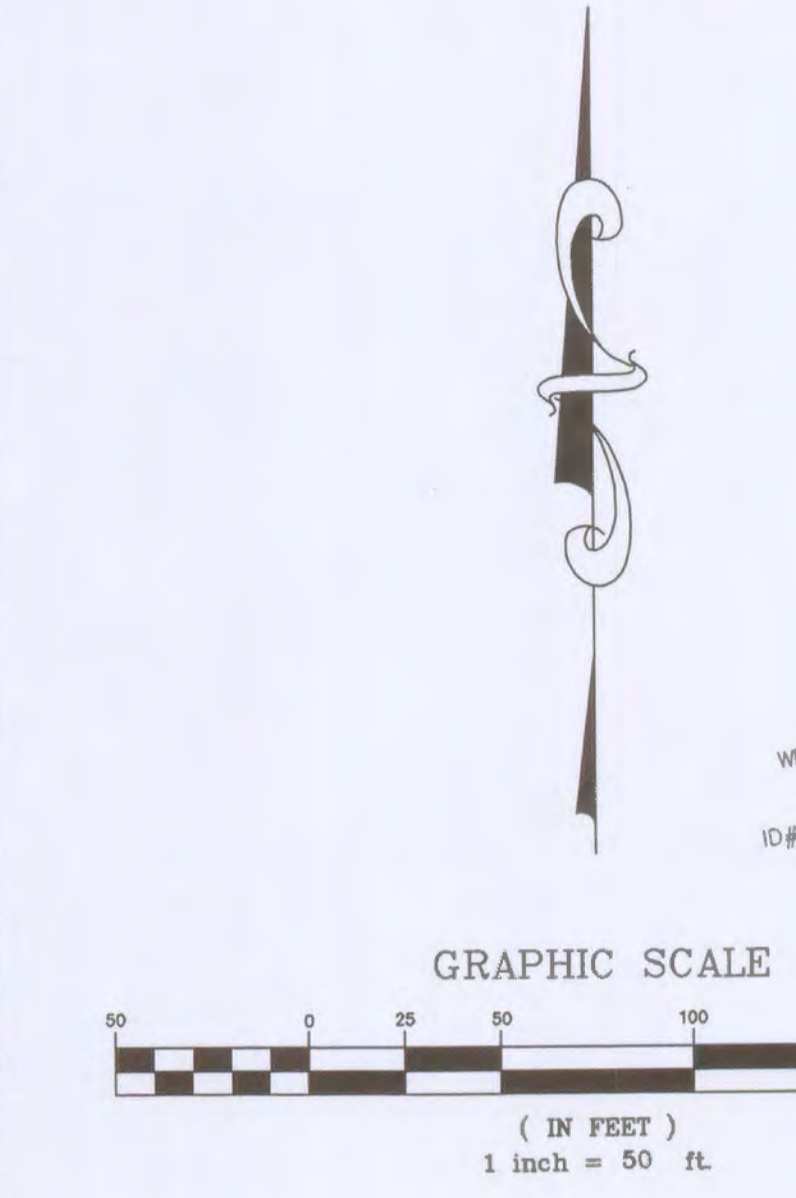


THE UNDERGROUND UTILITIES SHOWN HEREON WERE PLOTTED FROM AVAILABLE INFORMATION AND DO NOT NECESSARILY REFLECT THE ACTUAL EXISTENCE, NONEXISTENCE, SIZE, TYPE, NUMBER OR LOCATION OF THESE OR OTHER UTILITIES. THE GENERAL CONTRACTOR SHALL BE RESPONSIBLE FOR VERIFYING THE ACTUAL LOCATION OF ALL UNDERGROUND UTILITIES, SHOWN OR NOT SHOWN, AND SAID UTILITIES SHALL BE LOCATED IN THE FIELD PRIOR TO ANY GRADING, EXCAVATION OR CONSTRUCTION OF IMPROVEMENTS. THESE PROVISIONS SHALL IN NO WAY ABSOLVE ANY PARTY FROM COMPLYING WITH THE UNDERGROUND FACILITY SAFETY AND DAMAGE PREVENTION ACT, CHAPTER 319, RSMo



N/F GREGG SCHNIZING & KRISTIN SCHNIZING H/W D.B. 3032, PG. 2152 ID# 4-0076-4461-00-0028 FORST RD.

N/F DENNIS K. MARKWARD & BETTINA K. MARKWARD, TRS. D.B. 5029, PG. 2067 ID# 4-0076-4461-00-0013 2524 SOMMERS RD.

N/F WENTZVILLE R-IV SCHOOL DISTRICT D.B. 3848, PG. 402 4-0046-5015-00-0001.2 2523 SOMMERS RD.

Drainage Area	Total Area (AC)	Total 100% Area (AC)	P.I. Factor	Total 100% Q	Total 5% Area (AC)	P.I. Factor	Total 5% Q	Total 15 YR Q	Drains to Inlet #
1	0.44	0.00	3.85	0.00	0.44	1.87	0.82	0.82	OS 3
2	0.67	0.39	3.85	1.52	0.27	1.87	0.51	2.03	CI 08
3	0.84	0.50	3.85	1.93	0.34	1.87	0.64	2.57	CI 09
4	0.36	0.08	3.85	0.29	0.28	1.87	0.53	0.82	AI 10
5	0.56	0.12	3.85	0.45	0.45	1.87	0.83	1.28	AI 11
6	0.31	0.07	3.85	0.28	0.23	1.87	0.44	0.72	AI 12
7	0.48	0.23	3.85	0.87	0.26	1.87	0.48	1.35	CI 14
8	1.37	0.83	3.85	3.20	0.54	1.87	1.02	4.21	CI 15
9	0.50	0.10	3.85	0.40	0.39	1.87	0.74	1.13	AI 16
9.1	0.29	0.00	3.85	0.00	0.29	1.87	0.54	0.54	AI 16
10	0.62	0.08	3.85	0.30	0.54	1.87	1.01	1.31	AI 17
10.1	0.72	0.09	3.85	0.36	0.63	1.87	1.18	1.54	AI 17
11	0.55	0.12	3.85	0.46	0.43	1.87	0.81	1.27	AI 18
12	0.59	0.31	3.85	1.18	0.28	1.87	0.53	1.71	CI 19
13	0.77	0.47	3.85	1.80	0.31	1.87	0.57	2.38	CI 20
14	0.34	0.20	3.85	0.77	0.14	1.87	0.26	1.02	CI 22
15	0.34	0.20	3.85	0.77	0.16	1.87	0.30	1.07	CI 23
16	0.09	0.09	3.85	0.34	0.32	1.87	0.59	0.94	AI 24
16.1	0.31	3.85	1.20	0.08	1.87	0.15	1.35	CI 24.1	
17	0.32	0.06	3.85	0.23	0.26	1.87	0.48	0.71	AI 26
18	0.71	0.41	3.85	1.58	0.30	1.87	0.56	2.14	CI 27
19	0.63	0.31	3.85	1.20	0.31	1.87	0.59	1.79	CI 28
20	0.31	0.17	3.85	0.66	0.14	1.87	0.26	0.92	CI 30
21	0.60	0.60	3.85	2.29	0.29	1.87	0.54	2.83	CI 31
22	0.44	0.09	3.85	0.34	0.35	1.87	0.66	1.00	AI 32
23	0.74	0.12	3.85	0.46	0.62	1.87	1.16	1.62	AI 35
24	1.12	0.73	3.85	2.81	0.39	1.87	0.74	3.55	CI 37
25	1.03	0.03	3.85	0.11	1.00	1.87	1.87	1.99	OS 06
26	2.34	0.80	3.85	3.08	1.54	1.87	2.87	5.98	Sheet Flow Offsite
27	1.30	0.21	3.85	0.80	1.09	1.87	2.05	2.85	Sheet Flow Offsite
28	0.16	0.10	3.85	0.39	0.06	1.87	0.11	0.50	AI 35
29	0.64	0.17	3.85	0.65	0.47	1.87	0.88	1.53	AI 35.1
30	4.65	0.00	3.85	0.00	4.65	1.87	8.69	8.69	Sheet Flow Basin

THIS DOCUMENT IS FOR DRAINAGE PURPOSES ONLY!  
NOT FOR CONSTRUCTION!

ISSUE REMARKS/DATE  
1 10-07-2013 Revised per City, DCSD, & PWSD#2 Comments  
2 11-20-2013 Revised per City, DCSD, & PWSD#2 Comments  
3 12-16-2013 PWSD#2 Approval  
4 01-03-2014 Revised per City Comments  
5 02-11-2014 Revised per City Comments  
6 03-11-2014 Approval

PROJECT TITLE  
**OAKHURST**  
OF FALLON, MISSOURI

THE **STERLING** CO.  
ENGINEERS & SURVEYORS  
5055 New Baumgartner Road  
St. Louis, Missouri 63129  
Ph. 314-487-0440 Fax 314-487-8944  
www.sterling-eng-sur.com  
Corporate Certificate of Authority #001346

The Professional Engineer's seal and signature are required on this sheet. All drawings, instruments or other documents not exhibiting the seal and signature shall be considered void and of no legal effect. The Engineer assumes no responsibility for any errors or omissions in the drawings or documents not exhibiting the seal and signature.

Date: 2/11/2014  
Michael G. Boerding  
License No. MO E-28643  
Civil Engineer

LOMBARDO HOMES  
2299 Technology Drive  
Ofallon, Missouri 63368  
Ph. 636-285-2710

N/F RAY L. MUSGRAVE & NINA L. MUSGRAVE H/W D.B. 883, PG. 1411 ID# 4-0076-4461-00-0004 2607 FORST DR.

P+Z No. 207.02  
City No.  
Date: July 22, 2013  
Job No. 12-10-284  
Page No.

9.2  
IMP