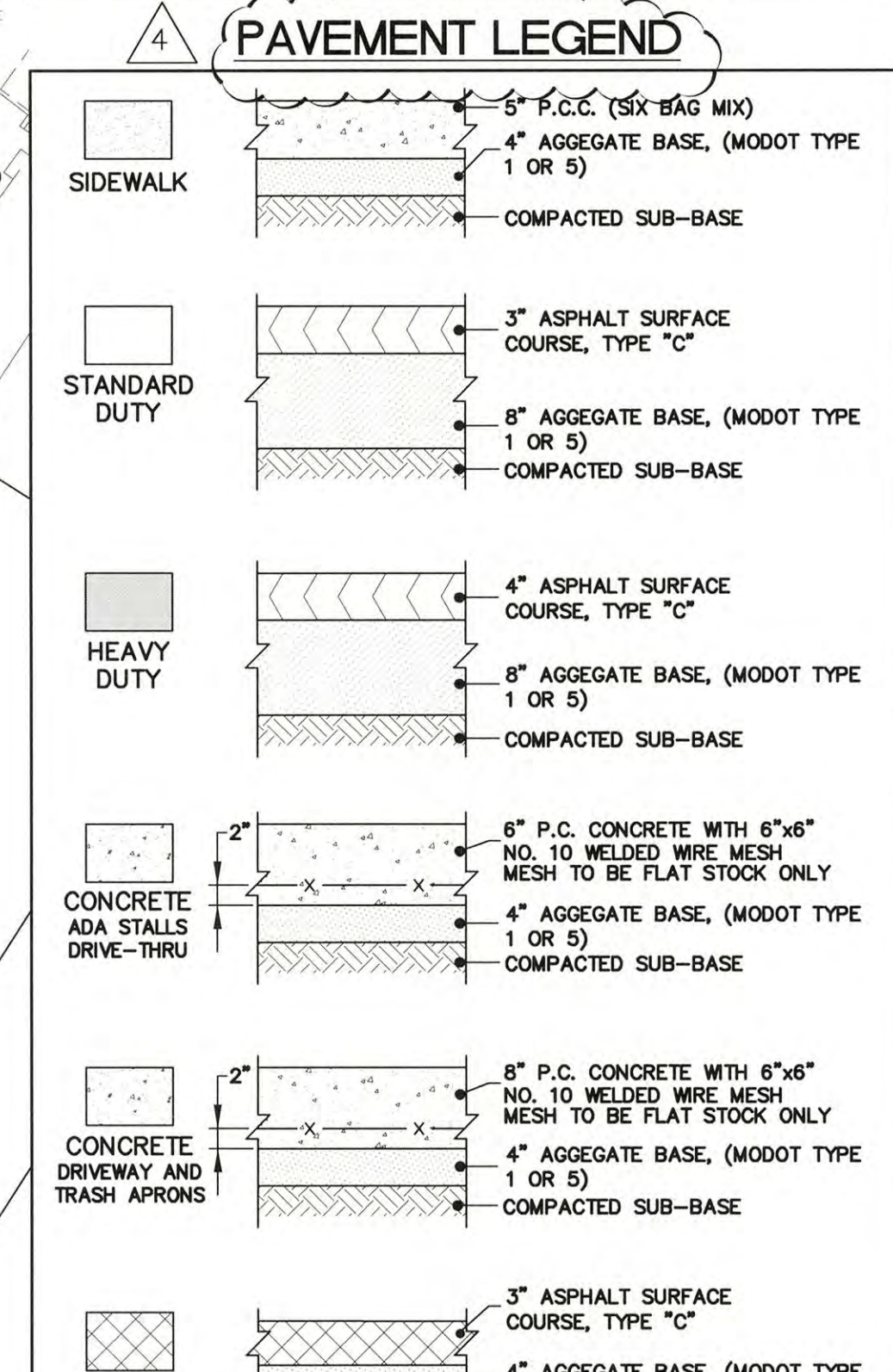


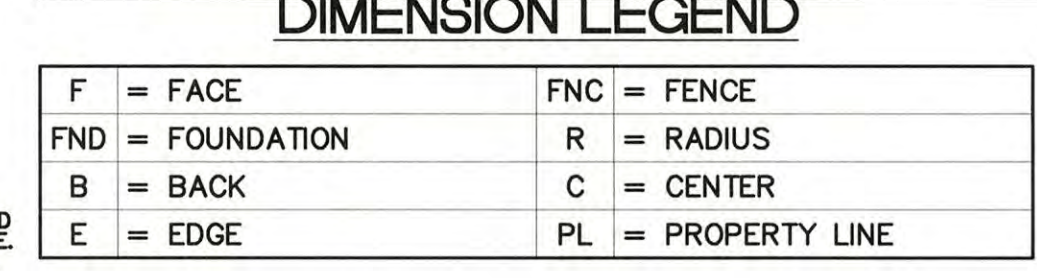
GENERAL NOTES:
 1. THESE PLANS ARE BASED ON THE ALTA/NSPS LAND TITLE SURVEY (SURVEY PROJECT #1807-109 DATED 01/08/19) PREPARED BY: MARLER SURVEYING COMPANY, INC. 11402 GRAVOIS ROAD, SUITE 200, ST. LOUIS, MO. 63126 (314) 729-1001
 2. PRIOR TO CONSTRUCTION, CONTRACTOR TO CONTACT THE DESIGN ENGINEER AND ARCHITECT TO VERIFY THAT THEY ARE WORKING FROM THE MOST CURRENT SET OF PLANS AND SPECIFICATIONS.

GEOMETRIC PLAN NOTES:
 1. PROPOSED IMPROVEMENTS ARE PARALLEL AND PERPENDICULAR TO THE WESTERN PROPERTY LINE.
 2. ALL RADIUS DIMENSIONS ARE TO BACK OF CURB.
 3. SEE ARCHITECTURAL PLANS FOR EXACT BUILDING DIMENSIONS.
 4. ALL STRIPING TO BE DOUBLE COATED 4" YELLOW PAINT UNLESS OTHERWISE NOTED.
 5. WHERE PEDESTRIANS HAVE TO CROSS A TAPERING RAMP OR CURB RAMP THE FACE AND TOP OF CURB ARE TO BE PAINTED USING YELLOW, SLIP RESISTANT PAINT.



LANDSCAPE DATA
 PARKING SPACES 74 x 270 = 19,980 x 0.06 = 1,199 (REQUIRED INTERIOR PARKING LOT LANDSCAPE AREA)
 LANDSCAPE AREA PROVIDED = 8,997 S.F.
 $8,997 / 3,000 = 3$ TREES PROVIDED
 3 TREES REQUIRED
 PROPERTY FRONTAGE = 225 / 40 = 6 TREES REQUIRED
 6 TREES PROVIDED

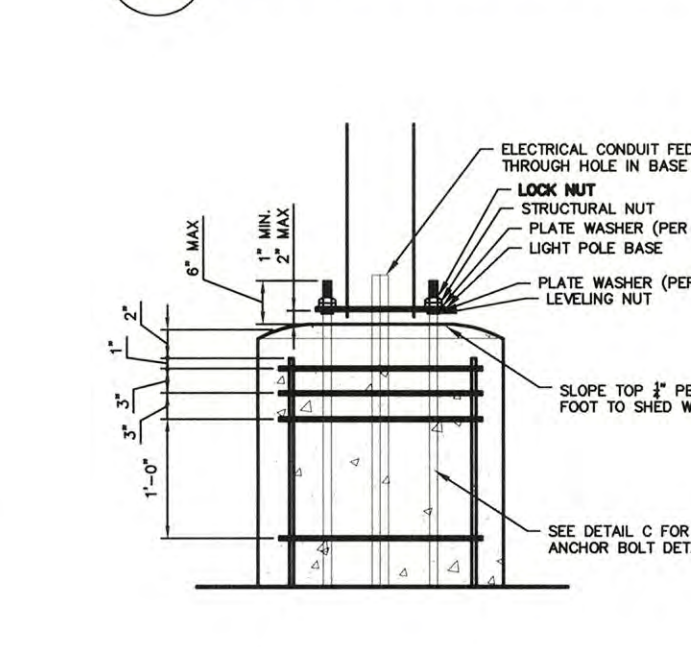
NOTES:
 1. REFERENCE M.O.D.T. STANDARD SPECIFICATIONS (LATEST EDITION) FOR BINDER & SURFACE COURSES AGGREGATE BASE COURSE.
 2. THE APPLICATION RATES FOR THE PRIME COAT AND TACK COAT ARE TO BE 0.30 AND 0.10 GALLONS PER SQUARE YARD, RESPECTIVELY.
 3. SEE PROJECT SPECIFICATIONS FOR SUB-BASE AND BASE COURSE COMPACTION.
 4. ALL CONCRETE FLATWORK TO INCLUDE A JOINTING PATTERN SUBMITTAL TO THE CONSTRUCTION MANAGER. CONTRACTOR TO STAY AS CLOSE TO 9"x9" SQUARE PANELS IN LARGE CONCRETE FLATWORK AREAS AS POSSIBLE.
 5. FOR SIDEWALKS, PROVIDE TOOLED JOINTS AT 5' O.C., CONTRACTION JOINTS AT 15' O.C., EXPANSION JOINTS AT 45' O.C.
 6. PROVIDE AN EXPANSION JOINT ADJACENT TO ALL STRUCTURES. THESE JOINTS SHOULD BE SEALED WITH A TOOL-FINISHED SILICONE SEALANT PER M.O.D.T. STANDARD.
 7. ALL NON-REINFORCED CONCRETE SHALL BE 4,000 PSI AT 28 DAYS.
 8. THE ASPHALT SHALL BE COMPACTED TO 98% MAXIMUM DENSITY.



CONTRACTOR NOTE:
 VERIFY BOLT CIRCLE AND ANCHOR BOLT SIZE PRIOR TO ORDERING POLES AND ANCHOR BOLTS

DESIGN CODES:
 - AISC 360-16
 - AISC 341-16
 - AISC 308-16
 - AISC 310-16
 - AISC 313-16
 - AISC 358-16
 - AISC 359-16
 - AISC 360-10
 - AISC 360-05
 - AISC 360-03
 - AISC 360-01
 - AISC 360-00
 - AISC 360-99
 - AISC 360-98
 - AISC 360-97
 - AISC 360-96
 - AISC 360-95
 - AISC 360-94
 - AISC 360-93
 - AISC 360-92
 - AISC 360-91
 - AISC 360-90
 - AISC 360-89
 - AISC 360-88
 - AISC 360-87
 - AISC 360-86
 - AISC 360-85
 - AISC 360-84
 - AISC 360-83
 - AISC 360-82
 - AISC 360-81
 - AISC 360-80
 - AISC 360-79
 - AISC 360-78
 - AISC 360-77
 - AISC 360-76
 - AISC 360-75
 - AISC 360-74
 - AISC 360-73
 - AISC 360-72
 - AISC 360-71
 - AISC 360-70
 - AISC 360-69
 - AISC 360-68
 - AISC 360-67
 - AISC 360-66
 - AISC 360-65
 - AISC 360-64
 - AISC 360-63
 - AISC 360-62
 - AISC 360-61
 - AISC 360-60
 - AISC 360-59
 - AISC 360-58
 - AISC 360-57
 - AISC 360-56
 - AISC 360-55
 - AISC 360-54
 - AISC 360-53
 - AISC 360-52
 - AISC 360-51
 - AISC 360-50
 - AISC 360-49
 - AISC 360-48
 - AISC 360-47
 - AISC 360-46
 - AISC 360-45
 - AISC 360-44
 - AISC 360-43
 - AISC 360-42
 - AISC 360-41
 - AISC 360-40
 - AISC 360-39
 - AISC 360-38
 - AISC 360-37
 - AISC 360-36
 - AISC 360-35
 - AISC 360-34
 - AISC 360-33
 - AISC 360-32
 - AISC 360-31
 - AISC 360-30
 - AISC 360-29
 - AISC 360-28
 - AISC 360-27
 - AISC 360-26
 - AISC 360-25
 - AISC 360-24
 - AISC 360-23
 - AISC 360-22
 - AISC 360-21
 - AISC 360-20
 - AISC 360-19
 - AISC 360-18
 - AISC 360-17
 - AISC 360-16
 - AISC 360-15
 - AISC 360-14
 - AISC 360-13
 - AISC 360-12
 - AISC 360-11
 - AISC 360-10
 - AISC 360-09
 - AISC 360-08
 - AISC 360-07
 - AISC 360-06
 - AISC 360-05
 - AISC 360-04
 - AISC 360-03
 - AISC 360-02
 - AISC 360-01

A CROSS SECTION DETAIL



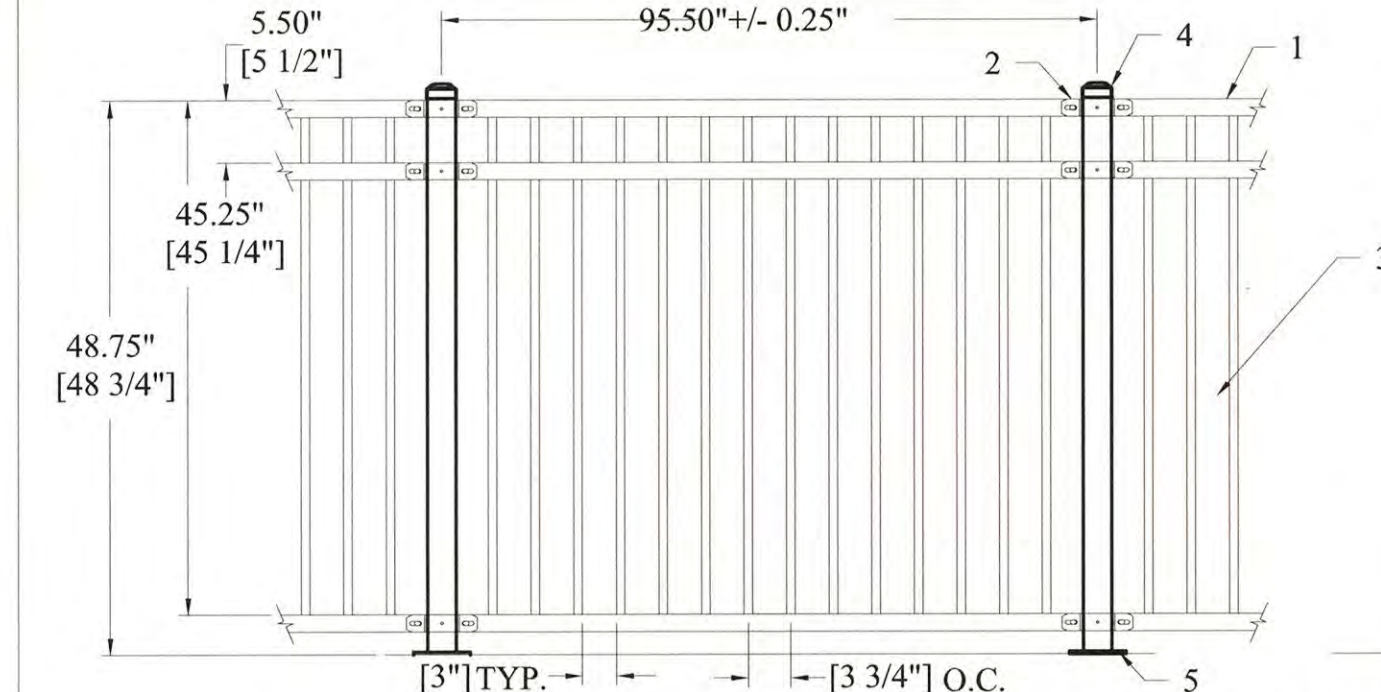
B CONNECTION DETAIL



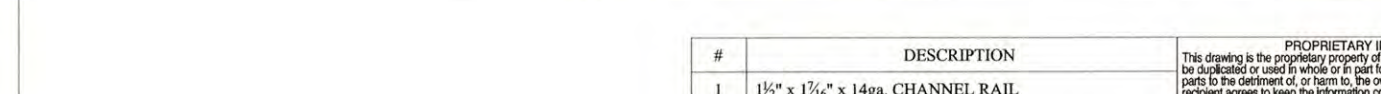
C ANCHOR BOLT DETAIL



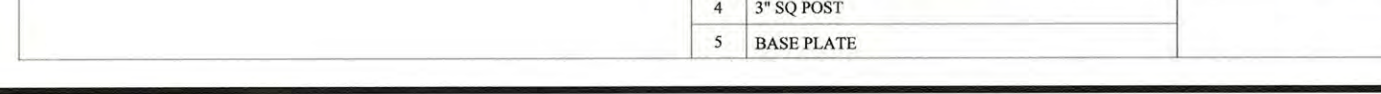
TOP VIEW



ELEVATION VIEW



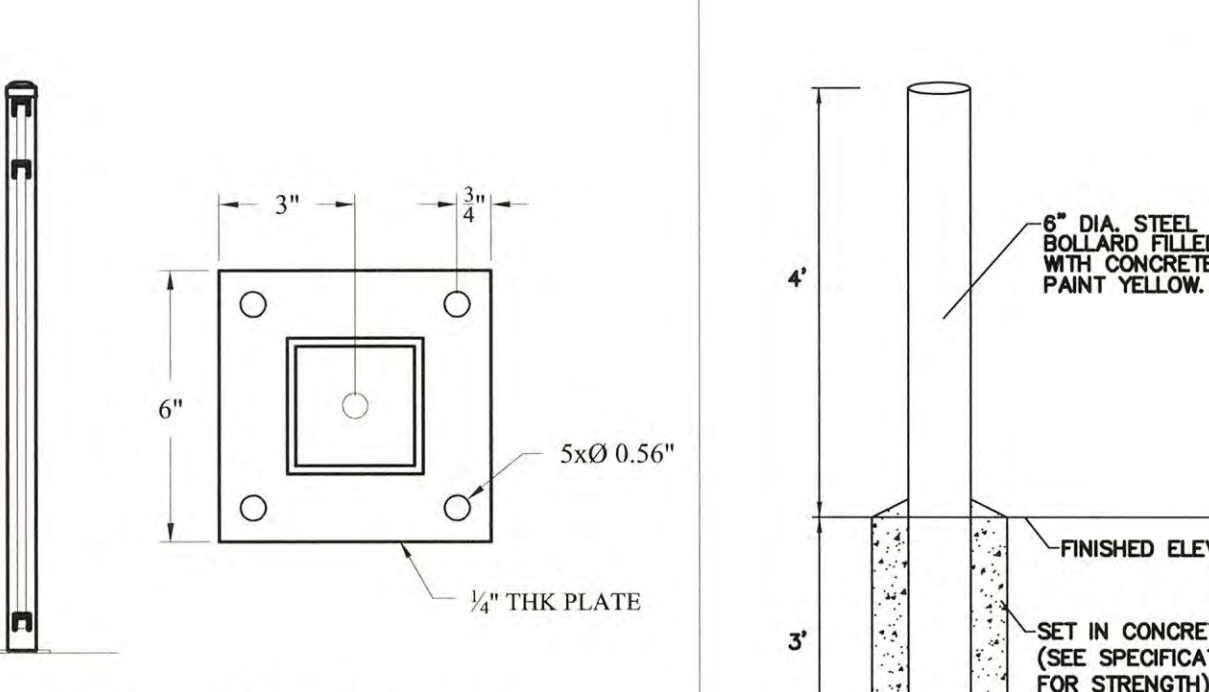
SIDE VIEW



BASE PLATE



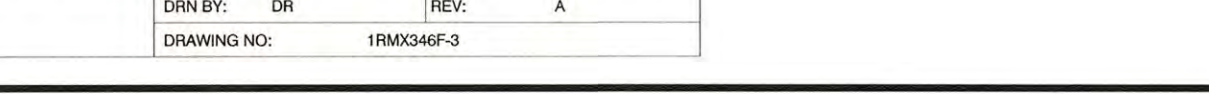
FOUNDATION SECTION



CONNECTION DETAIL



ANCHOR BOLT DETAIL



BOLLARD



OVERALL GEOMETRIC PLAN

DATE: 5/23/19
 REVISIONS: BID SET 6/10/19, PERMIT SET 6/13/19, PER CITY REVIEW 7/19/19

Prepared For:
 DXU ARCHITECTS
 412 South Wells, 2nd Floor
 Chicago, IL 60607

OBERWEIS RESTAURANT
 1816 Highway K
 O'Fallon, St. Charles County, Missouri, 63366

Prepared By:
 Watermark Engineering Resources, Ltd.

2631 Ginger Woods Parkway, Suite 100, Aurora, IL 60502
 phone 630-375-1800 fax 630-236-5600 www.watermark-engineering.com

DATE: 7/19/19
 EXP: 11/30/19
 JEFFREY C. MILLER - ENGINEER
 MO# 2016015595

CHECKED BY: J.MILLER
 DESIGN BY: M.HANSEN
 DRAWN BY: K.P., M.H.
 DATE: MARCH 14, 2019
 SCALE: 1" = 30'
 PROJECT NO.: 18-085

OVERALL GEOMETRIC PLAN
C-3