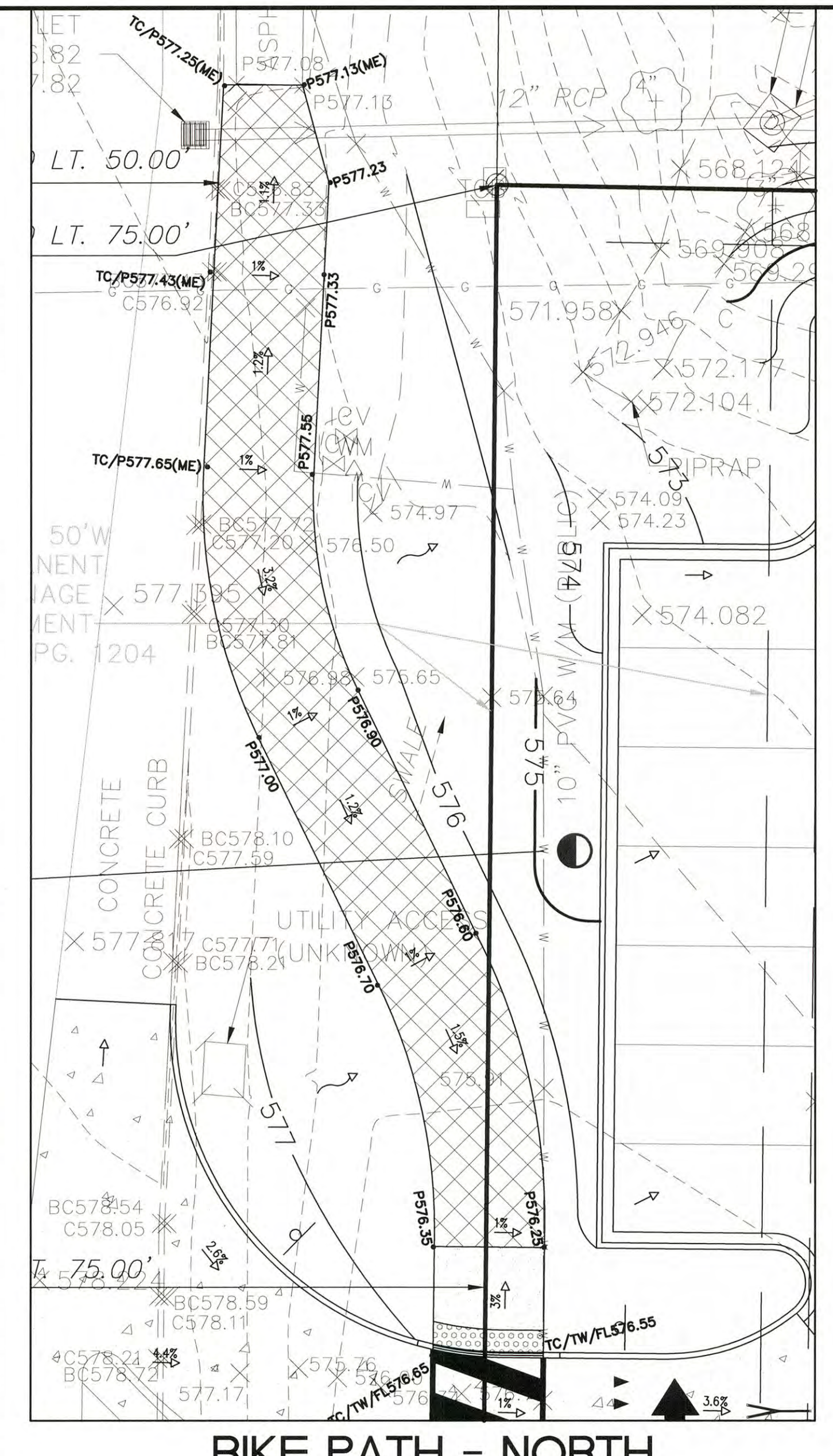
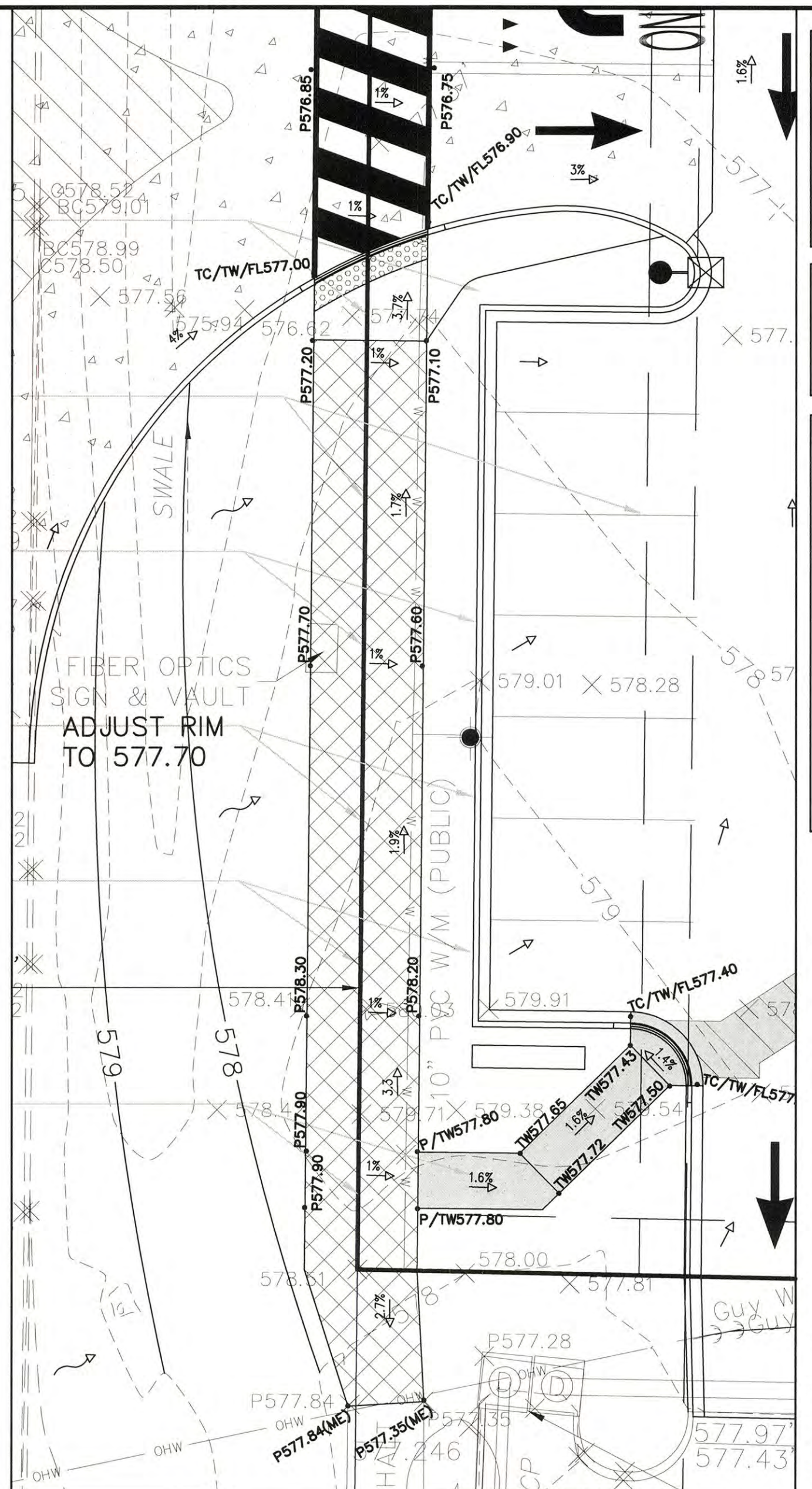


ACCESSIBLE ROUTE GRADES - PLAN VIEW #1
SCALE: 1" = 10'



BIKE PATH - NORTH
SCALE: 1" = 10'



BIKE PATH - SOUTH
SCALE: 1" = 10'

GENERAL NOTES:
1. THESE PLANS ARE BASED ON THE ALTA/NSPS LAND TITLE SURVEY (SURVEY PROJECT #1807-109 DATED 01/08/19) PREPARED BY MARLER SURVEYING COMPANY, INC. 11402 GRAVOIS ROAD, SUITE 200, ST. LOUIS, MO. 63126 (314) 729-1001
2. PRIOR TO CONSTRUCTION, CONTRACTOR TO CONTACT THE DESIGN ENGINEER AND ARCHITECT TO VERIFY THAT THEY ARE WORKING FROM THE MOST CURRENT SET OF PLANS AND SPECIFICATIONS.

REFERENCE BENCHMARK
"0" IN OPEN ON FIRE HYDRANT LOCATED APPROXIMATELY 200 FEET EAST OF THE NORTHWEST CORNER OF THE SUBJECT TRACT.
ELEVATION = 568.26' FTUS NAVD88

GRADING PLAN NOTES:
1. UNLESS OTHERWISE SPECIFIED, TOP OF CURB (TC) AND/OR TOP OF WALK ELEVATIONS ARE 0.5' HIGHER THAN THE ADJACENT FLOW LINE (FL) OR PAVEMENT (P) ELEVATIONS.
2. IN ALL LOCATIONS WHERE ELEVATIONS ARE SHOWN AS ±, THE ELEVATION HAS BEEN DETERMINED BASED ON INTERPOLATED GRADES FROM THE SURVEY. CONTRACTOR IS TO VERIFY THESE GRADES PRIOR TO CONSTRUCTION OF ANY IMPROVEMENTS WITHIN THE PROXIMITY OF THESE INTERPOLATED GRADES AND REPORT THEM TO THE DESIGN ENGINEER FOR VERIFICATION OF PROPOSED SLOPES PRIOR TO INSTALLATION OF PROPOSED IMPROVEMENTS. DESIGN ENGINEER IS NOT RESPONSIBLE FOR SLOPES OF PROPOSED IMPROVEMENTS BASED ON THESE ± GRADES WITHOUT CONFIRMATION OF EXISTING ELEVATIONS AT TIME OF CONSTRUCTION.
3. PAVING, SIDEWALK, AND CURBING IS NOT TO BE INSTALLED IN SUCH A MANNER THAT IT WILL BLOCK THE FLOW OF WATER AWAY FROM THE BUILDING INCLUDING BUT NOT LIMITED TO WEEP HOLES, WICKS, DRAINAGE SCUPPERS OR PIPES, AND LANDSCAPING.

"AMERICANS WITH DISABILITIES ACT" (ADA) MINIMAL REQUIREMENTS'
1. GENERAL CONTRACTOR TO BECOME FAMILIAR WITH AND APPLY THE ADA MINIMAL REQUIREMENTS AND REPORT TO ARCHITECT/ENGINEER ANY DISCREPANCIES BEFORE CONSTRUCTION.
2. ACCESSIBLE ROUTES ON AN ACCESSIBLE SITE AND FOR ANY NEW SITE IMPROVEMENTS SHALL BE PROVIDED TO SERVE ALL ACCESSIBLE SPACES OR ELEMENTS.
3. THE MINIMUM CLEAR WIDTH OF AN ACCESSIBLE ROUTE PER CODE IS 36".
4. EACH ACCESSIBLE PARKING SPACE IS TO BE:
4.1. **CAR:**
A MINIMUM OF 192" WIDE, CONSISTING OF A 96" WIDE ACCESS AISLE AND A 96" WIDE PARKING SPACE, UNLESS OTHERWISE NOTED (SEE DETAIL). THE ACCESS AISLE SHALL BE PERMITTED TO BE PLACED ON EITHER SIDE OF THE PARKING SPACE. SEE DETAIL FOR REQUIRED DEPTH.
4.2. **VAN:**
A MINIMUM OF 192" WIDE, CONSISTING OF A 96" WIDE ACCESS AISLE AND A 96" WIDE PARKING SPACE, UNLESS OTHERWISE NOTED (SEE DETAIL). WHEN VAN ACCESSIBLE PARKING SPACES ARE ANGLED, THE ACCESS AISLE SHALL BE LOCATED ON THE PASSENGER SIDE OF THE PARKING SPACE. SEE DETAIL FOR REQUIRED DEPTH.

5. ACCESSIBLE PARKING SPACES ARE TO BE LOCATED AS CLOSE TO THE BUILDING ENTRANCE AS POSSIBLE AND SHALL BE IDENTIFIED WITH A SIGN.
6. RAMPS MUST NOT EXTEND OUT FROM THE CURB INTO THE ACCESS AISLE OF ANY ACCESSIBLE PARKING SPACE.
7. TWO PARKING SPACES MAY NOT SHARE AN ACCESS AISLE.
8. ACCESS AISLES SHALL BE MARKED SO AS TO DISCOURAGE PARKING IN THEM. (SEE DETAIL).
9. ALL ADA PARKING STALLS, ACCESS AISLES AND CROSSWALKS SHALL BE STRIPPED USING 4" WIDE DOUBLE LAYER OF HIGH QUALITY YELLOW PAINT, UNLESS OTHERWISE NOTED.
10. ACCESSIBLE PARKING SPACES AND ACCESS AISLES SHALL NOT EXCEED A SLOPE OF 1:50 (2.00%) IN ANY DIRECTION.
11. EACH ACCESSIBLE PARKING SPACE SHALL HAVE AN IDENTIFICATION SIGN (SEE DETAIL).

RAMPS
12. AN ACCESSIBLE ROUTE WITH A RUNNING SLOPE GREATER THAN 1:20 (5.00%) IS A RAMP AND SHALL COMPLY WITH THE RAMP REQUIREMENTS.
13. AN ACCESSIBLE ROUTE MAY CROSS OPEN PAVEMENT OR FOLLOW A RAMP AS REQUIRED BY SITE-SPECIFIC CONDITIONS. THE RUNNING SLOPE OF AN ACCESSIBLE ROUTE ACROSS OPEN PAVEMENT MUST NOT EXCEED 1:20 (5.00%), WITH A CROSS SLOPE NOT EXCEEDING 1:50 (2.00%). SLOPES EXCEEDING 1:20 (5.00%), BUT LESS THAN 1:12 (8.33%), CONSTITUTE RAMPS AND MUST CONFORM TO THE REQUIREMENTS FOR RAMP DESIGN (HANDRAILS, CURBS, LANDINGS, RISE AND RUN LIMITS, ETC.) AS DETAILED ON THE CIVIL AND ARCHITECTURAL PLANS. NO RAMP SHALL HAVE A RUNNING SLOPE EXCEEDING 1:12 (8.33%), NOR HAVE A CROSS SLOPE EXCEEDING 1:50 (2.00%).

14. THE GENERAL CONTRACTOR/CONTRACTOR SHALL MEASURE THE SUBGRADE AND ACROSS FORMS PRIOR TO INSTALLATION OF ASPHALT OR CONCRETE IMPROVEMENTS TO ASSURE THE FINAL IMPROVEMENTS WILL MEET THESE MINIMAL ADA REQUIREMENTS. ANY DISCREPANCIES SHALL BE REPORTED TO THE CIVIL ENGINEER PRIOR TO INSTALLATION OF THE IMPROVEMENTS.
CURB RAMPS
15. A CURB RAMP SHALL BE PROVIDED WHEREVER AN ACCESSIBLE ROUTE CROSSES A CURB.
16. CURB RAMPS HAVE A MAXIMUM SLOPE OF 1:12 (8.33%) AND DO NOT REQUIRE HANDRAILS.
17. IF A CURB RAMP IS LOCATED WHERE PEDESTRIANS MUST WALK ACROSS THE RAMP, OR WHERE IT IS NOT PROTECTED BY HANDRAILS, OR GUARDRAILS, IT SHALL HAVE FLARED SIDES; THE MAXIMUM SLOPE OF THE FLARE SHALL BE 1:12 (8.33%).

| NO. | REVISIONS | DATE |
|-----|-----------------|---------|
| 1 | BID SET | 5/23/19 |
| 2 | PERMIT SET | 6/10/19 |
| 3 | PER CITY REVIEW | 6/13/19 |
| 4 | | 7/19/19 |

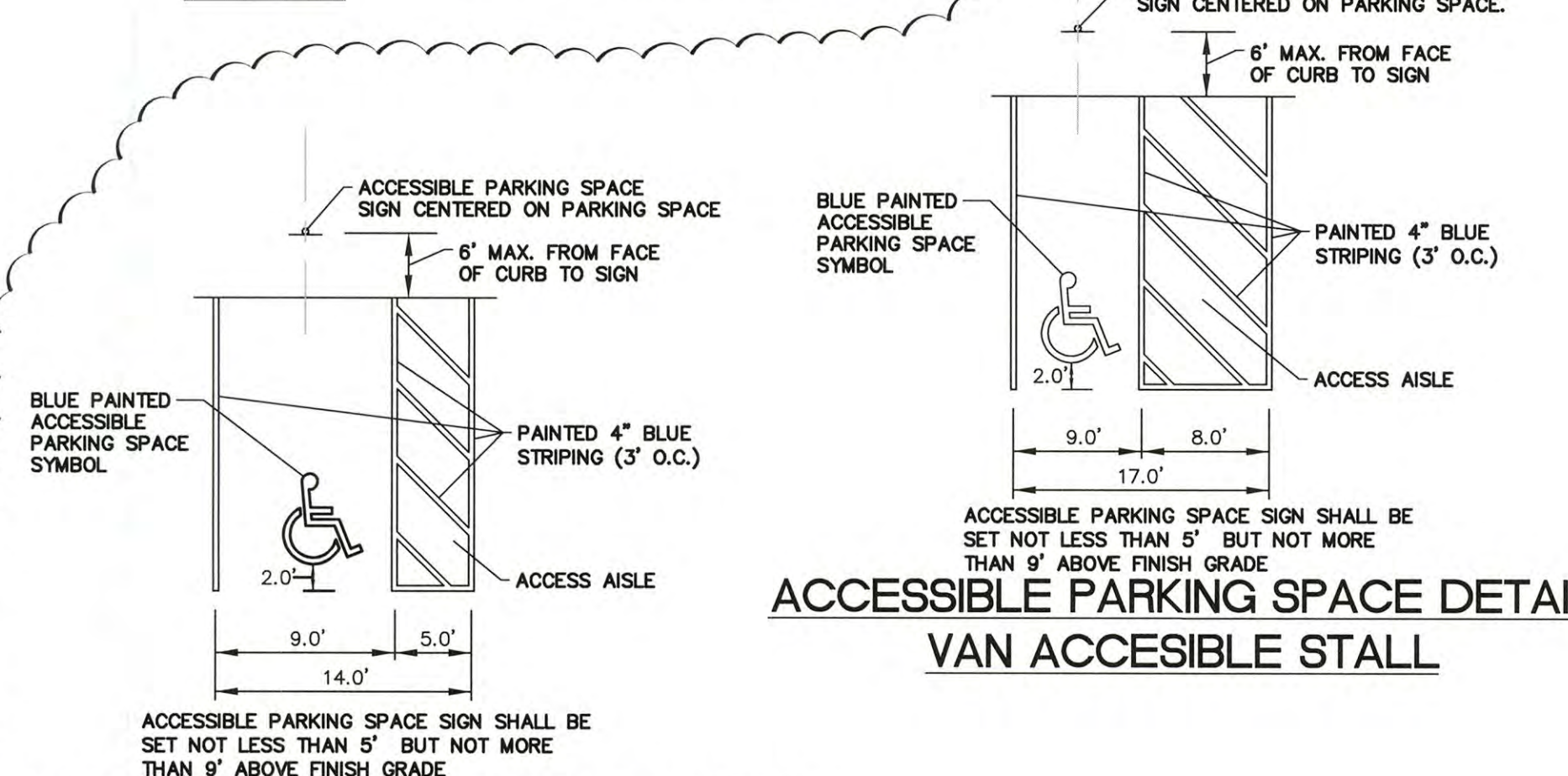
Prepared For:
DXU ARCHITECTS
412 South Wells, 2nd Floor
Chicago, IL 60607
OBERWEIS RESTAURANT
1816 Highway K
O'Fallon, St. Charles County, Missouri, 63366

Prepared By:
Watermark Engineering Resources, Ltd.
2651 Chicago Woods Parkway, Suite 100, Aurora, IL 60502
phone 630-575-1600 fax 630-525-9500 www.watermark-engineering.com

DATE: 7/19/19
JEFFREY C. MILLER
NUMBER: PE-2016015595
EXP: 11/30/19

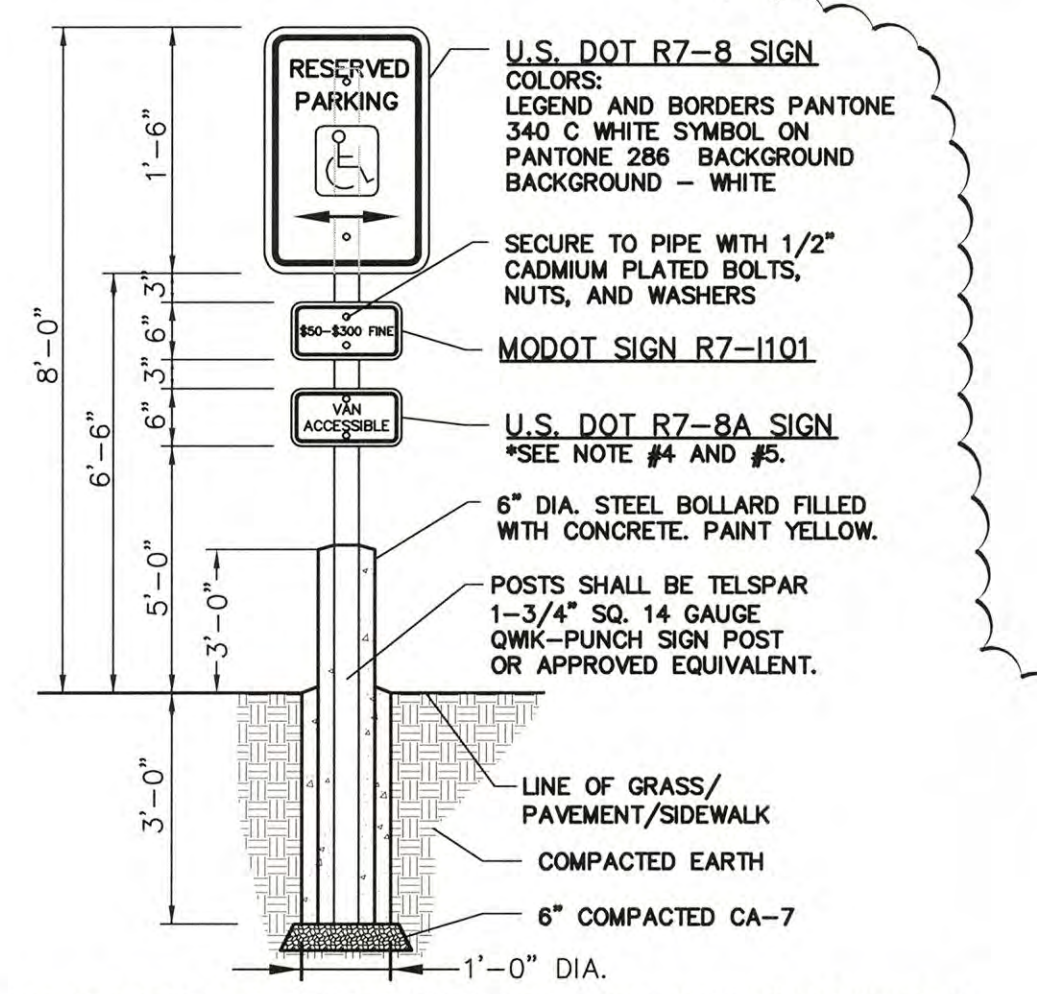
CHECKED BY: J.MILLER
DESIGN BY: M.HANSEN
DRAWN BY: K.P., M.H.
DATE: MARCH 14, 2019
SCALE: 1" = 20'
PROJECT NO.: 18-085

█ = A.D.A. ACCESSIBLE ROUTE



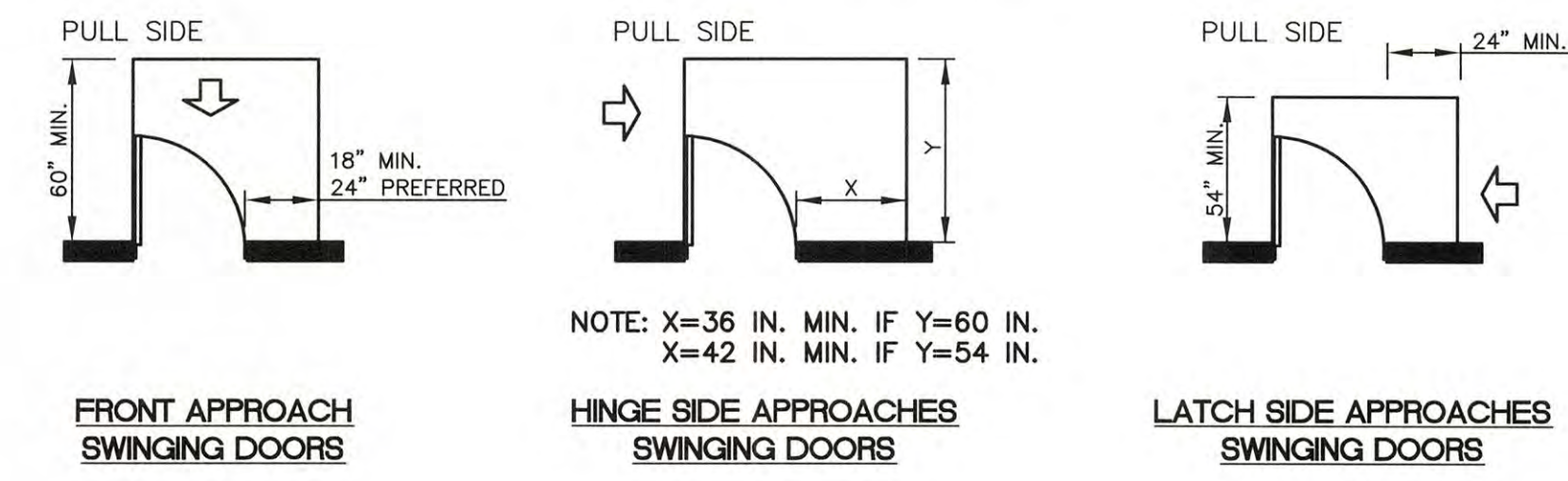
ACCESSIBLE PARKING SPACE DETAIL

ACCESSIBLE PARKING SPACE DETAIL
VAN ACCESSIBLE STALL

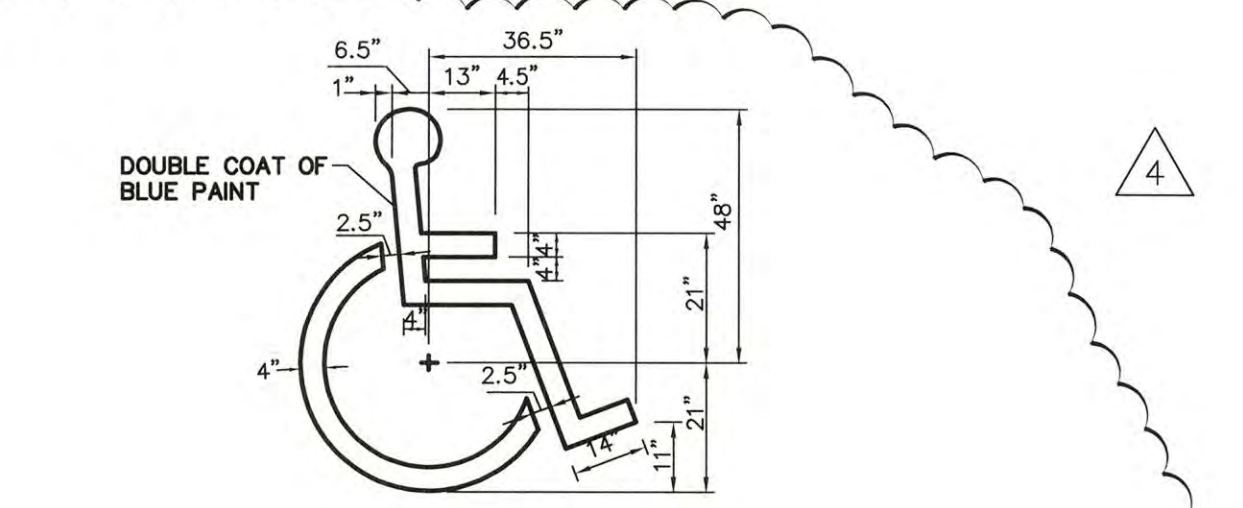


ACCESSIBLE PARKING SPACE BOLLARD SIGN DETAIL

- WHERE A FINE IN EXCESS OF \$250 IS ESTABLISHED BY A MUNICIPALITY BY ORDINANCE IN ACCORDANCE WITH THE STATUTES, THE ACTUAL AMOUNT OF THE FINE SHOULD BE SHOWN.
- THIS PLATE MAY BE MOUNTED DIRECTLY BELOW THE R7-8 SIGN OR COMBINED WITH THAT SIGN ON A SINGLE 12 INCH BY 24 INCH PANEL.
- ON THE RESERVED PARKING SIGN, THE ARROW SHOULD BE OMITTED WHERE THERE IS ONLY ONE SPACE. THE ARROW MAY ALSO BE MADE TO POINT IN ONLY ONE DIRECTION. THE ARROW MAY ALSO BE REPLACED BY "TIME" SUCH AS 9 AM-5 PM WHERE A PART TIME RESTRICTION EXISTS.
- ONE IN EVERY SIX ACCESSIBLE SPACES, BUT NOT LESS THAN ONE, SHALL BE SERVED BY AN ACCESS AISLE 8 FEET WIDE MINIMUM AND SHALL BE DESIGNATED "VAN ACCESSIBLE".
- THE LOWEST BOTTOM EDGE OF THE LOWEST REQUIRED SIGN SHALL BE MOUNTED AT 60" ABOVE FINISHED GRADE.
- COLORS FOR BOTH MODOT SIGN R7-1101 AND USDOT R7-8A, LEGEND AND BORDERS-GREEN NON-REFLECTORIZED (PANTONE 340C) BACKGROUND-WHITE REFLECTORIZED.
- ALL SIGNS, SIGN POSTS, BACKS AND BRACKET ARMS SHALL BE PAINTED BLACK USING CARBOLINE RUST BOND PENETRATING SEALER SG AND CARBOLINE 133 HB PAINT (OR EQUIVALENT AS APPROVED BY CITY OF O'FALLON AND MODOT).

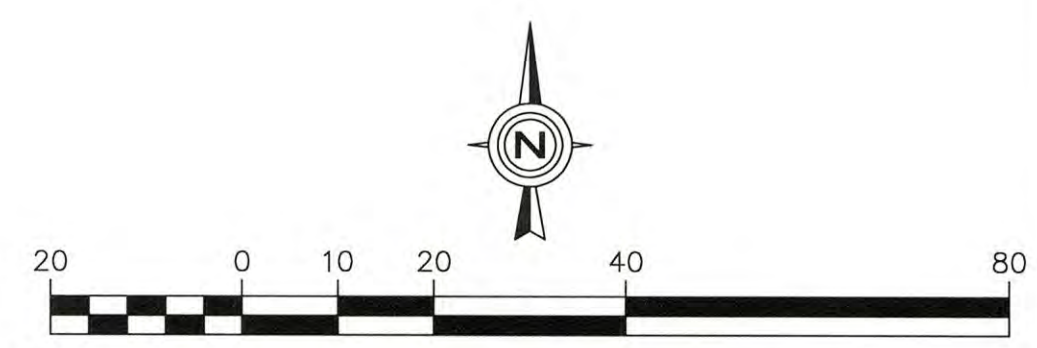


TYPICAL ACCESSIBLE LANDING AREA DETAIL



ACCESSIBLE PARKING SPACE SYMBOL

- SYMBOL IS CENTERED ON WIDTH OF PARKING SPACE AND 2' FROM THE END OF THE PARKING SPACE.



ACCESSIBLE ROUTE GRADES AND DETAILS

C-5