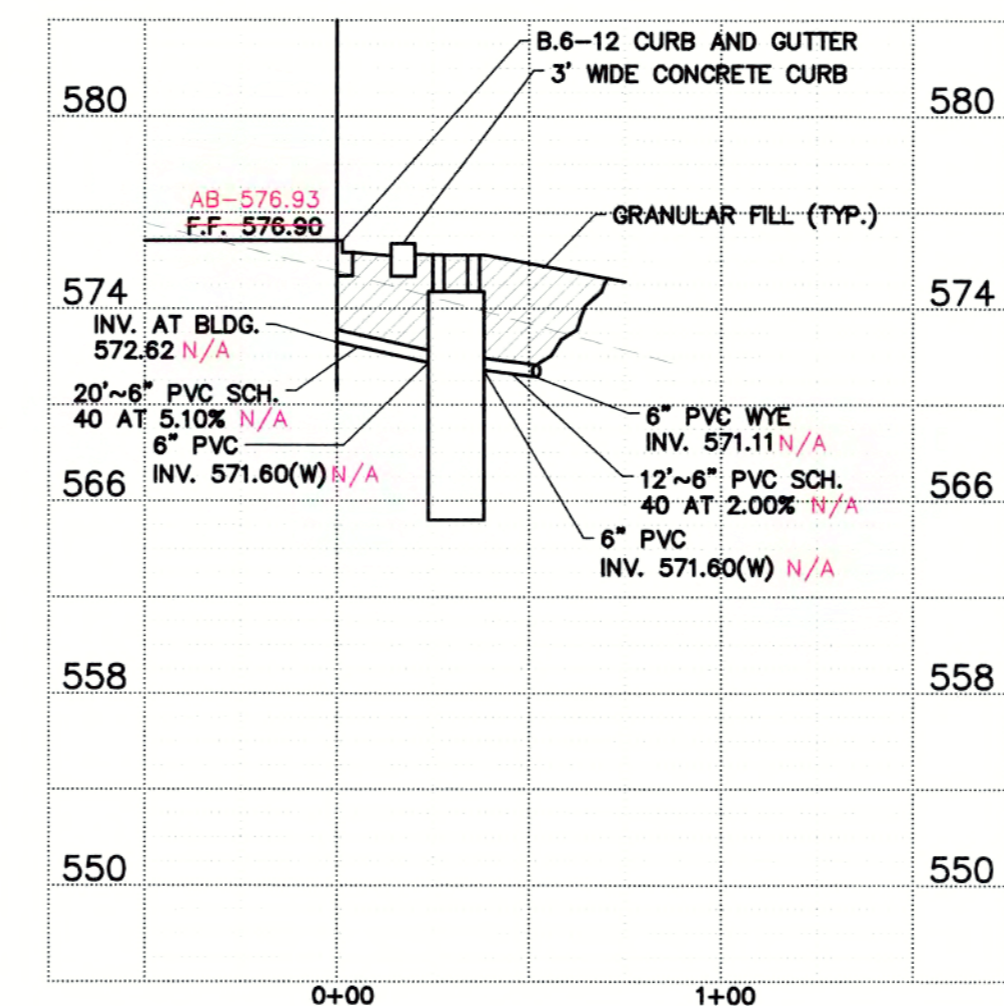


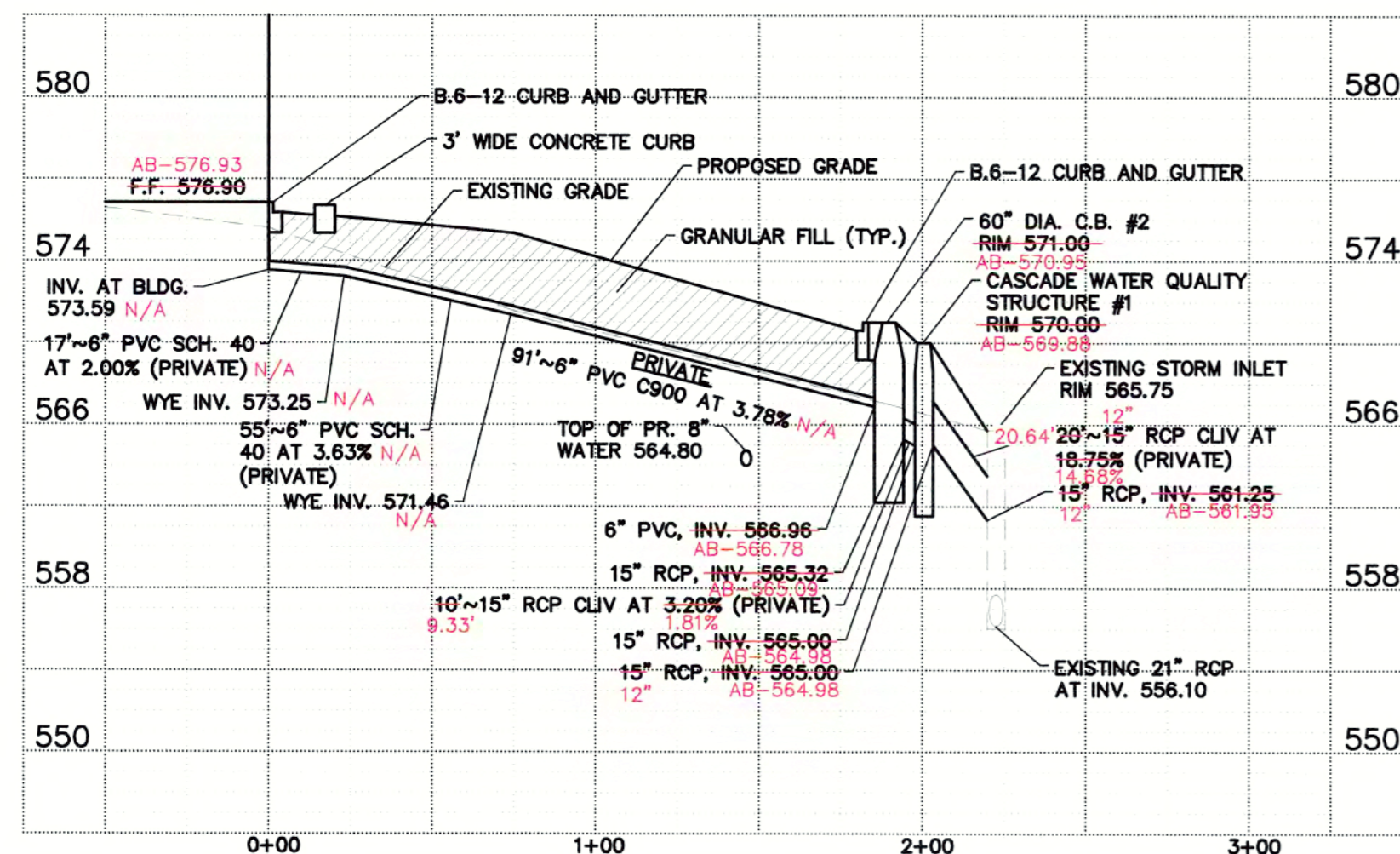
**SANITARY SEWER PROFILE**

HORIZONTAL = 1" = 50'  
VERTICLE = 1" = 4'



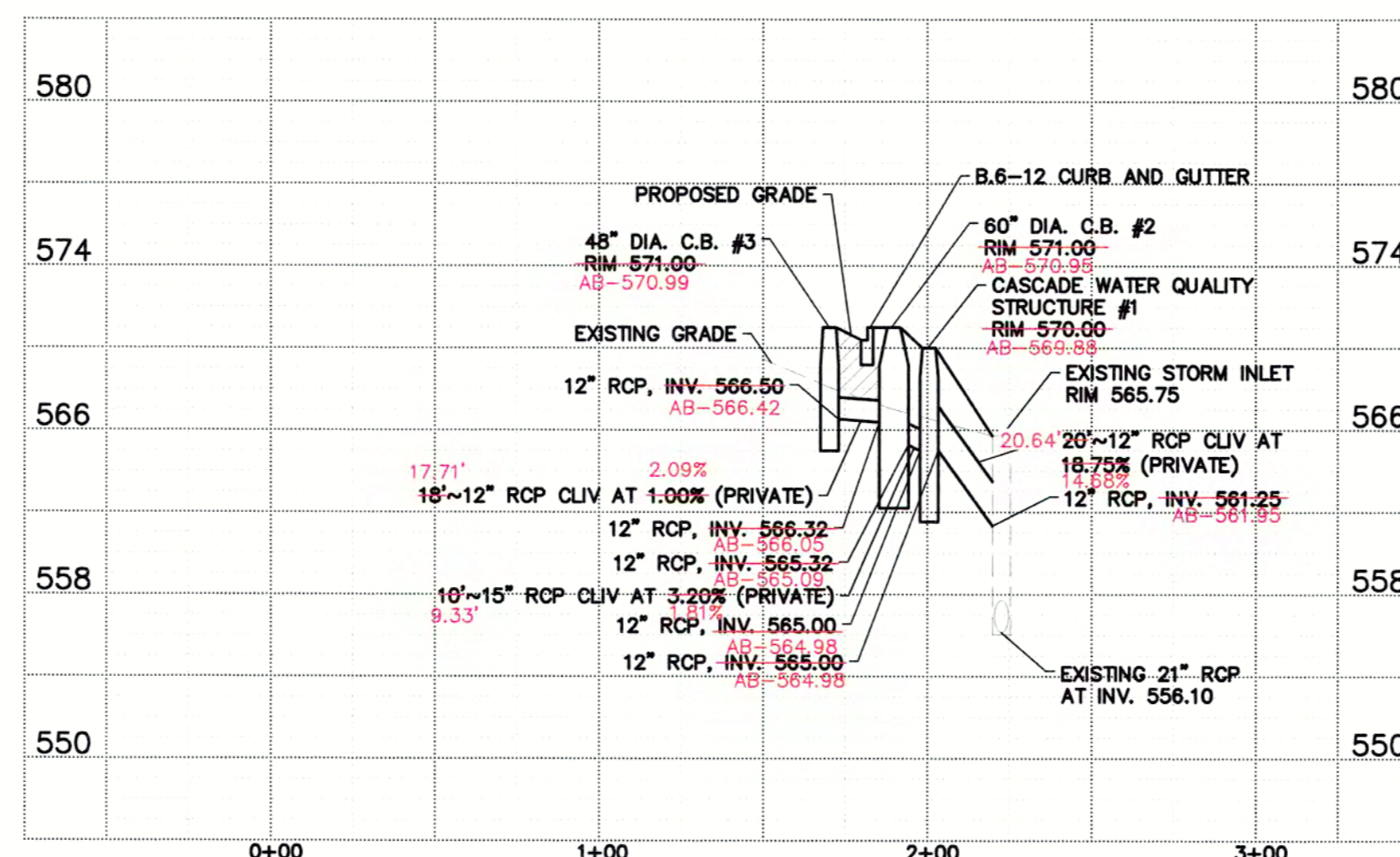
**SANITARY SEWER PROFILE - GREASE TRAP**

HORIZONTAL = 1" = 50'  
VERTICLE = 1" = 4'



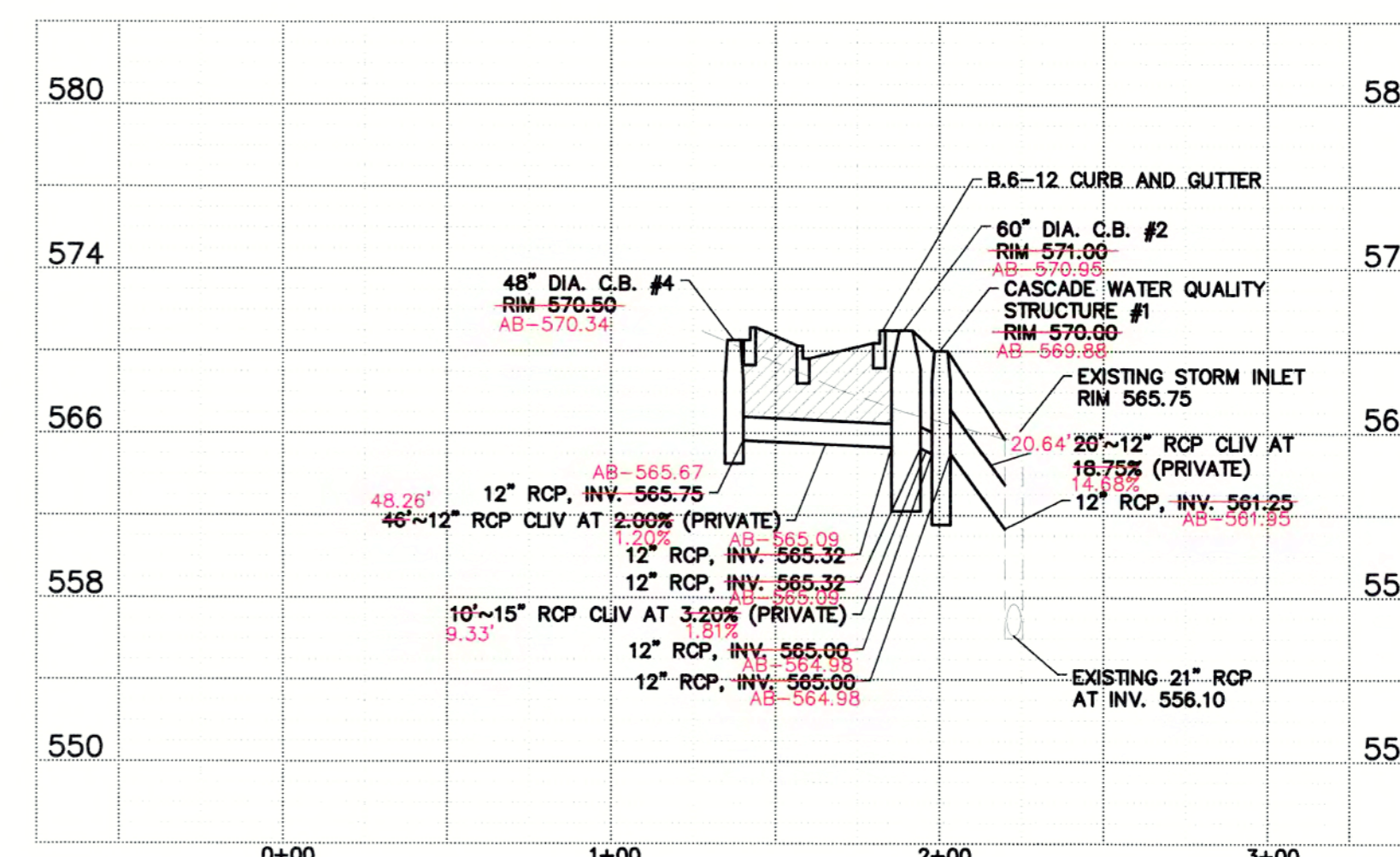
**STORM SEWER PROFILE #1**

HORIZONTAL = 1" = 50'  
VERTICLE = 1" = 4'



**STORM SEWER PROFILE #2**

HORIZONTAL = 1" = 50'  
VERTICLE = 1" = 4'



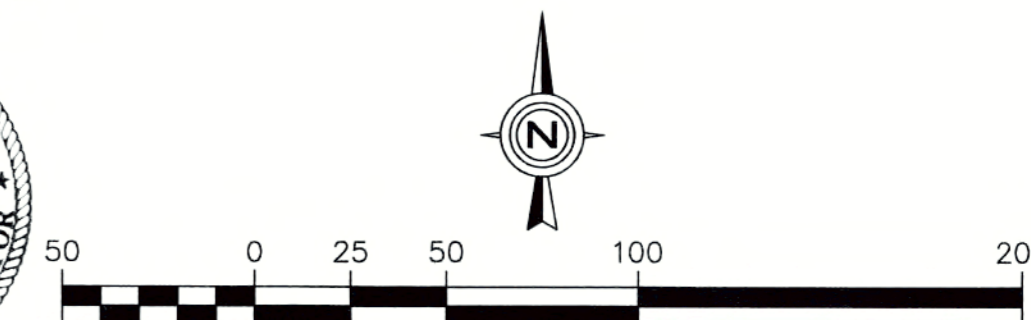
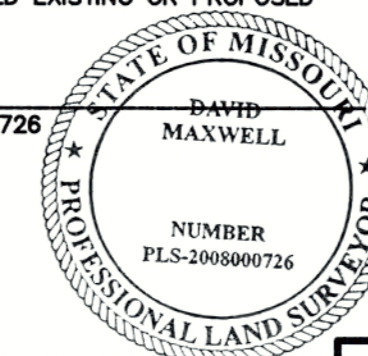
**STORM SEWER PROFILE #3**

HORIZONTAL = 1" = 50'  
VERTICLE = 1" = 4'

**AS-BUILT CERTIFICATION**

THE EXISTING SEWER LENGTHS, SIZES, FLOWLINES, DEPTHS OF STRUCTURES AND SEWERS, AND LOCATIONS WITH RESPECT TO EXISTING OR PROPOSED EASEMENTS HAVE BEEN MEASURED. THE RESULTS OF THOSE MEASUREMENTS ARE SHOWN ON THIS SET OF FINAL MEASUREMENT PLATS. SINCE THE WYE LOCATIONS HAVE BEEN PLOTTED FROM INFORMATION PROVIDED BY THE SEWER CONTRACTOR OR OTHER SOURCES, I DISCLAIM ANY RESPONSIBILITY FOR THAT SPECIFIC INFORMATION. ALL PUBLIC SEWERS ARE LOCATED WITHIN DESIGNATED EXISTING OR PROPOSED EASEMENTS.

DAVID W. MAXWELL MISSOURI P.L.S. #2008000726  
PREMIER DESIGN GROUP  
MISSOURI C.O.A. #2012007849  
5/20/2020  
DATE:



**RECORD DRAWING**

**SANITARY AND STORM SEWER PROFILES**

NO.	REVISIONS	DATE
1	BID SET	5/23/19
2	BID SET	6/10/19
3	PERMIT SET	6/13/19
4	PER CITY REVIEW	7/19/19
5	NO REVISIONS	11/22/19

Prepared For:

DXU ARCHITECTS  
412 South Wells, 2nd Floor  
Chicago, IL 60607  
**OBERWEIS RESTAURANT**  
1816 Highway K  
O'Fallon, St. Charles County, Missouri, 63366

Prepared By:



WATERMARK ENGINEERING RESOURCES, LTD.  
MISSOURI STATE CERTIFICATE OF AUTHORITY #2016015112



EXP: JEFFREY C. MILLER - ENGINEER  
MO# 2016015112

CHECKED BY: J.MILLER  
DESIGN BY: M.HANSEN  
DRAWN BY: K.P. M.H.  
DATE: MARCH 14, 2019  
SCALE: 1" = 50' (HORZ.)  
1" = 4' (VERT.)  
PROJECT NO.: 18-085

**C-14**