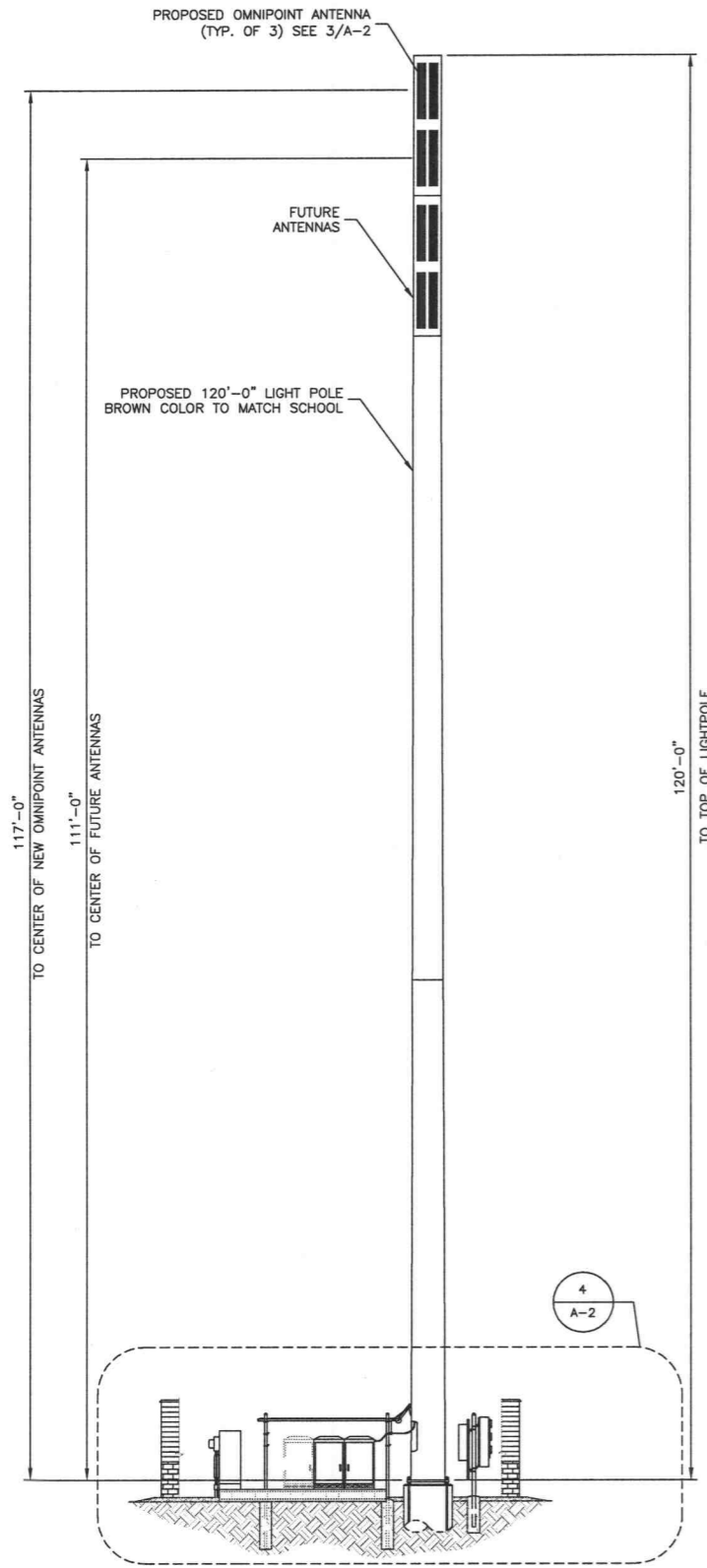


NOTE:
TOWER SHALL NOT BE LIT
UNLESS SPECIFICALLY
REQUIRED BY FAA



SITE ELEVATION

11x17 SCALE: 1/16"=1'-0"
24x36 SCALE: 1/8"=1'-0"

1
A-2

ANTENNA	SECTOR	ANTENNA	VENDOR	AZIMUTH TN	MECHANICAL DOWNTILT	RADIATION CENTER	CABLE LENGTH	COAXIAL CABLE	NUMBER OF COAX RUNS
A-1	A	7251.02	ALLGON	30'	0	117'	137'	ANDREW 7/8" DIAMETER	2
A-2	A	7251.02	ALLGON	30'	0	111'		ANDREW 7/8" DIAMETER	
B-1	B	7251.02	ALLGON	150'	0	117'	137'	ANDREW 7/8" DIAMETER	2
B-2	B	7251.02	ALLGON	150'	0	111'		ANDREW 7/8" DIAMETER	
C-1	C	7251.02	ALLGON	270'	0	117'	137'	ANDREW 7/8" DIAMETER	2
C-2	C	7251.02	ALLGON	270'	0	111'		ANDREW 7/8" DIAMETER	

NOTES:

1. ALL ANTENNAS TO BE FURNISHED WITH DOWNTILT BRACKETS. CONTRACTOR TO COORDINATE REQUIRED MECHANICAL DOWNTILT FOR EACH ANTENNA WITH VOICESTREAM/OMNIPPOINT RF ENGINEER.

COAX CABLE IDENTIFICATION:

CONTRACTOR MUST PROVIDE EASY IDENTIFICATION AND UNIFORM MARKING OF ANTENNA CABLING, PER THE FOLLOWING INSTRUCTIONS:

1. LOCATION: MARKINGS SHALL BE MADE USING COLOR TAPE W/ 3" OF COVERAGE AFFIXED AT THREE PLACES ON THE COAX CABLE RUN

FIRST - ON THE COAX AT THE CONNECTOR NEAREST THE ANTENNA (WHERE THE COAX AND JUMPER ARE CONNECTED).

SECOND - AT THE BASE OF THE TOWER STRUCTURE. (FOR

THIRD - AT A POINT OUTSIDE THE BTS. (JUST PRIOR TO MGB)

2. SECTOR IDENTIFICATION: NORMALLY A SITE WILL HAVE UP TO THREE SECTORS. SECTORS SHALL BE DESIGNATED IN A CLOCKWISE MANNER; THE ALPHA SECTOR IS CLOSEST TO ZERO DEGREES (NORTH) THE BETA AND GAMMA FOLLOW CLOCKWISE IN SEQUENCE.

ALPHA SECTOR COAX WILL BE MARKED MAIN 1 AND DIVERSITY 1. NORMALLY SITES WILL INITIALLY GO ON THE AIR WITH AS FEW AS TWO ANTENNAS PER SECTOR AND AS THE SYSTEM GROWS, ADDITIONAL ANTENNA WILL BE ADDED.

BETA SECTOR COAX WILL BE MARKED MAIN 2 AND DIVERSITY 2.

GAMMA SECTOR WILL BE MARKED MAIN 3 AND DIVERSITY 3.

COLOR CODE AS FOLLOWS:

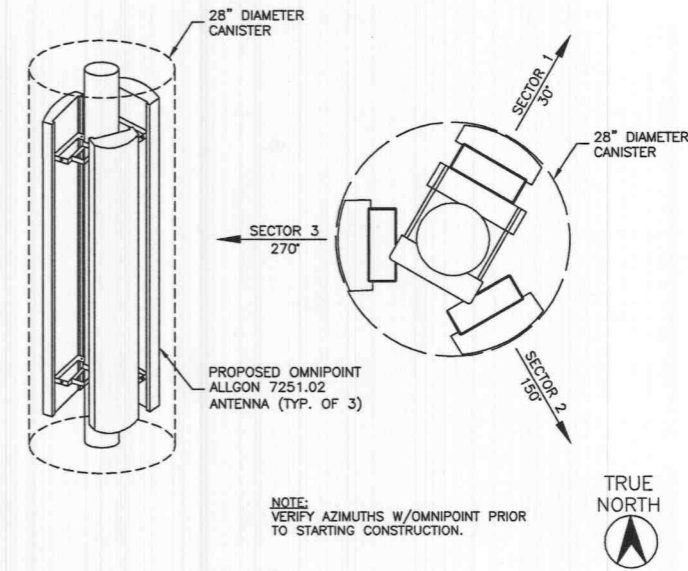
ALPHA SECTOR - RED
BETA SECTOR - BLUE
GAMMA SECTOR - WHITE
MAIN WILL BE MARKED WITH ONE BAND OF TAPE DIVERSITY WILL BE MARKED WITH TWO BANDS OF TAPE EXTRA WILL BE MARKED WITH THREE BANDS OF TAPE

3. OMNI IDENTIFICATION: FOR OMNI SITES, WHICH NORMALLY CONSIST OF THREE ANTENNA, IT IS SUGGESTED THAT THE ORIENTATION OF THE OBSERVER ALSO BE THAT OF LOOKING IN A NORTHERLY DIRECTION.

COAX BEND TABLE							
CABLE SIZE	ANDREW CABLE TYPE #	MANUF. MIN BEND RADIUS	HANGER ANDREW CAT. #	CABLE TO CABLE SPACING	MAX VER. HANGER SPACING	MAX HOR. HANGER SPACING	
1/2"	LDF4-50A	5"	206706-1	1/2"	4'-0"	3'-0"	
7/8"	LDF5-50A	10"	206706-2	1/2"	4'-0"	3'-0"	
1-5/8"	LDF7-50A	20"	206706-4	1/2"	4'-0"	3'-0"	
1/2"	FSJ4-50B	1-1/4"	206706-1	1/2"	4'-0"	3'-0"	

COAX SCHEDULE

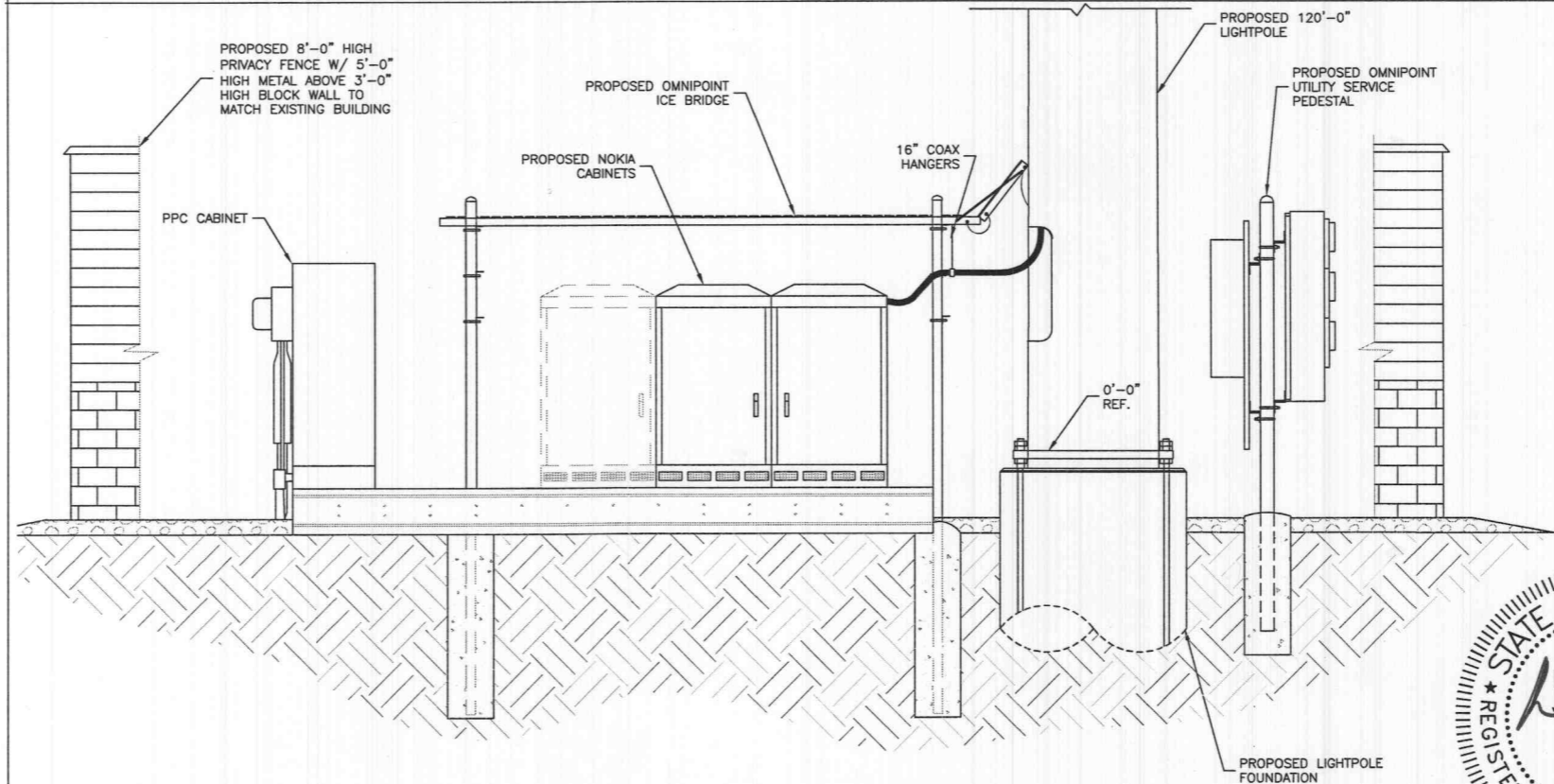
2
A-2



SECTOR	MODEL	MANUFACTURER	CONNECTOR	DIMENSIONS	TOTAL WEIGHT
ALPHA: Tx/Rx	7251.02	ALLGON	7/16" DIN		
BETA: Tx/Rx	7251.02	ALLGON	7/16" DIN	72" x 19"	150 lbs.
GAMMA: Tx/Rx	7251.02	ALLGON	7/16" DIN		

ANTENNA SPECIFICATIONS

3
A-2



ENLARGED SITE ELEVATION

11x17 SCALE: 1/4"=1'-0"
24x36 SCALE: 1/2"=1'-0"

4
A-2



DATE SIGNED: 07-18-00

OMNIPPOINT COMMUNICATIONS INC.

2004 WESTPORT CENTER DRIVE
ST. LOUIS, MO. 63146

OFFICE: (314) 812-3600
FAX: (314) 812-3692

MIDWEST WIRELESS

4020 NORTH MACARTHUR BLVD.
SUITE 122-272
IRVING, TX. 75038

OFFICE: (972) 899-3800
FAX: (972) 899-3801

StrataDesignServices

10190 Old Katy Road, Suite 340
Houston, Texas -- U.S.A. 77043
Phone 713 . 463 . 6099
Fax 713 . 463 . 8731
Email drawings@stratagroup.net

SDS Job No.: D290

APPROVALS

OMNIPPOINT _____
LANDLORD _____
LEASING _____
R.F. _____
ZONING _____
CONSTRUCTION _____
A&E _____

PROJECT NO: MO-05-212-D

DRAWN BY: K.H.

CHECKED BY: R. PACHECO

SUBMITTALS

DATE	DESCRIPTION	REV
05-02-00	ZONING REVIEW	A
05-05-00	GENERAL REVIEW	B
06-28-00	FINAL ZONING	C
07-18-00	GENERAL REVISIONS	0

THE INFORMATION CONTAINED IN THIS SET OF DOCUMENTS IS PROPRIETARY BY NATURE. ANY USE OR DISCLOSURE OTHER THAN THAT WHICH RELATES TO OMNIPPOINT COMMUNICATIONS INC. IS STRICTLY PROHIBITED.

SITE NAME

MO-05-212-D

NORTH ST. PETERS

SHEET TITLE

SITE ELEVATION & ANTENNA SCHEDULE

SHEET NUMBER

A-2

SHEET 4 of 6 SHEETS