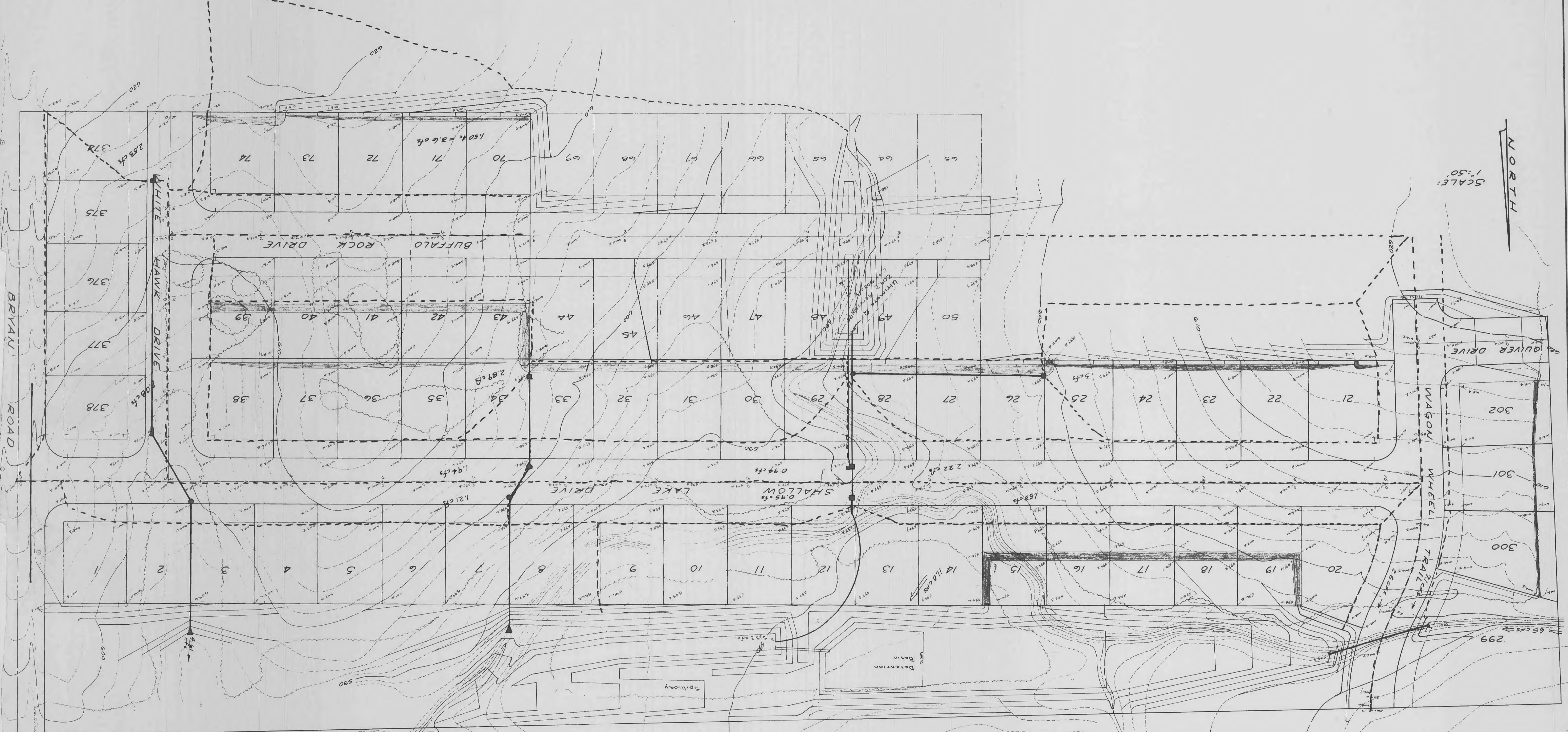


Big Yards - 64,500 sq. ft.



NOTE: SEE SHEET & ENTERED DETENTION PLAN FOR REVISED DETENTION GRADING & HYDRAULICS

Site standpipes for total dev. Q to det. basin
 $Q = (56.92 + 8.60) \times 2.4 = 157.2 \text{ cfs}$
 $Q = 157.2 \text{ cfs} \times 1.7 \text{ cfs/Ac} = 486.2 \text{ cfs}$
 Allowable release rate @ Ft.
 286 Ac @ 1.7 cfs/Ac = 486.2 cfs
 Actual Q to Ft.
 On-site: 18 Ac @ 2.4 = 43.2
 Off-site: 19 Ac @ 1.7 = 32.3
 Total Q to Ft. = 75.5 cfs
 Less Q to Detention = 17.4
 Total Q to Ft. = 58.1 cfs
 From Detention Basin: 104.4 cfs
 Allowable Release Rate = 104.4 cfs
 Detention Volume Provided: 35,100 Ft³
 Storage: 13.3 x 1800 = 23,940 Ft³
 Differential: 13.3 x 1800 = 23,940 Ft³
 Developed Runoff: 19 x 2.4 = 45.6 cfs
 Pre-Dev. Runoff: 19 x 1.7 = 32.3 cfs
 Difference: 13.3 cfs
 Off-site: 56.92 Ac @ 1.7 = 96.76 cfs
 On-site: 8.60 Ac @ 2.4 = 20.64 cfs
 Total Q to Detention = 117.40 cfs

OSAGE MEADOWS
 DATE 1983
 Rev. 0-14-84 Note
 Storm Sewers, Cont'd
 Detention Facility

DETENTION CALCS.

Rev. 0-14-84 Note
 Storm Sewers, Cont'd
 Detention Facility