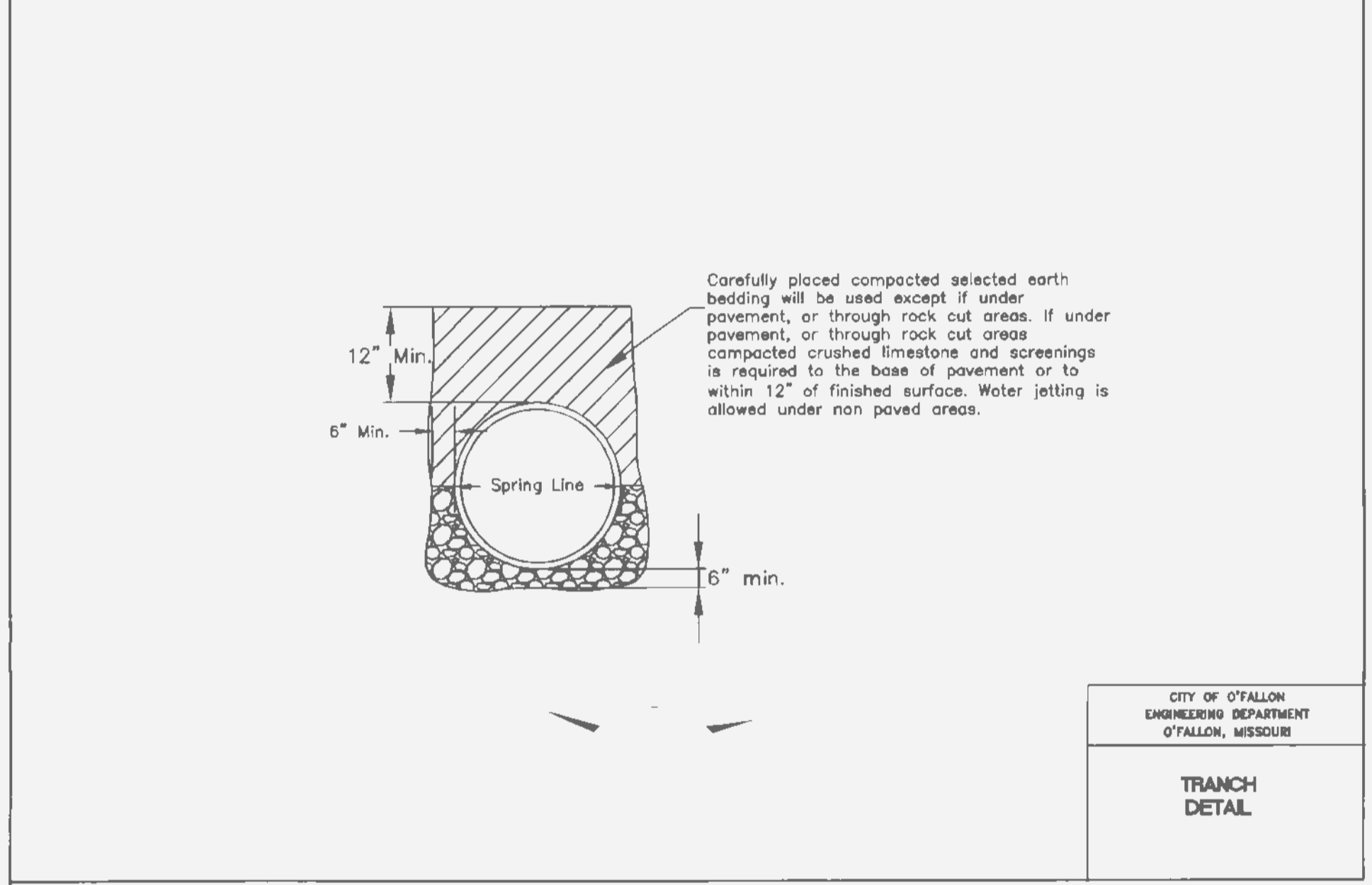
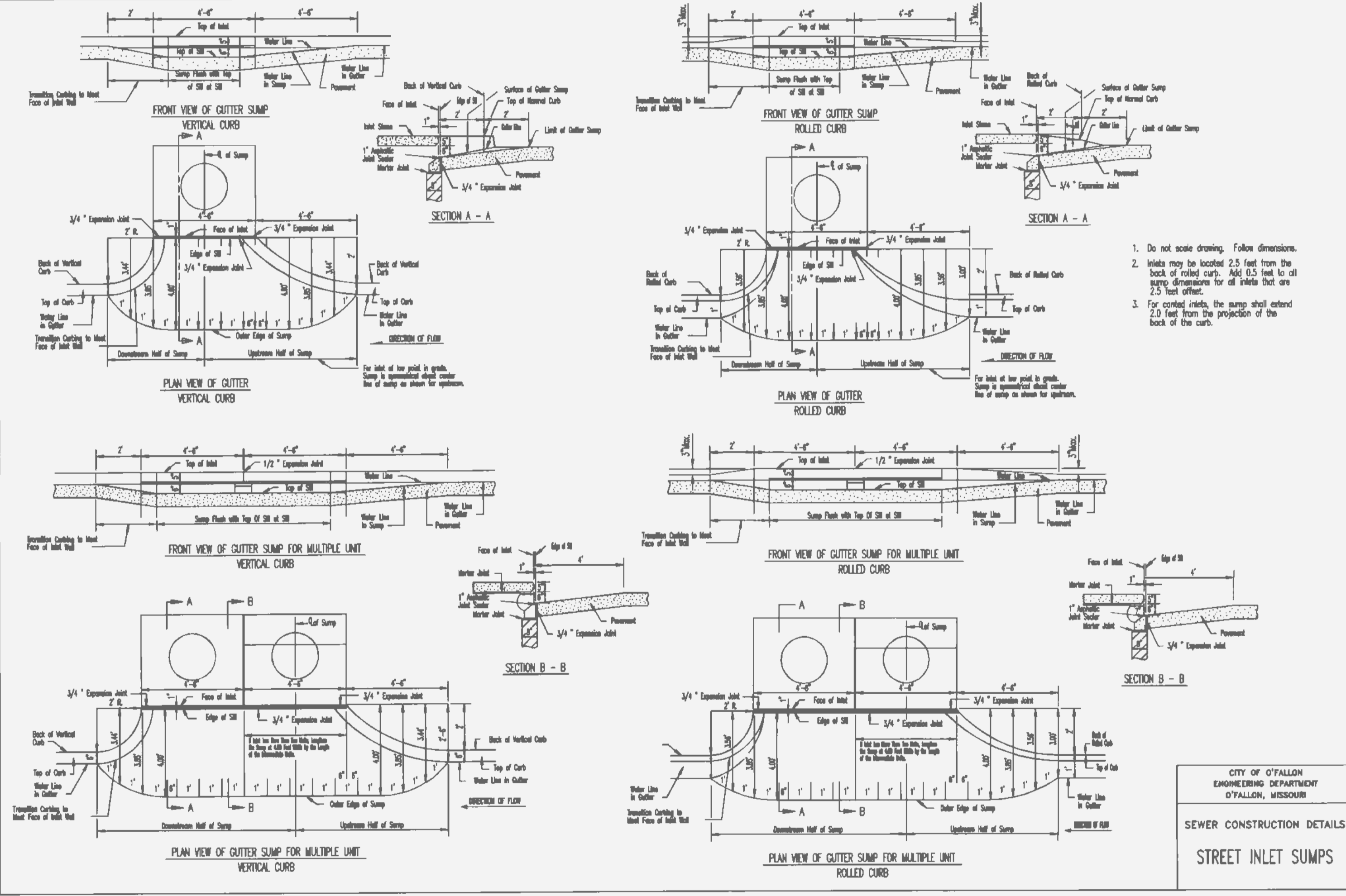
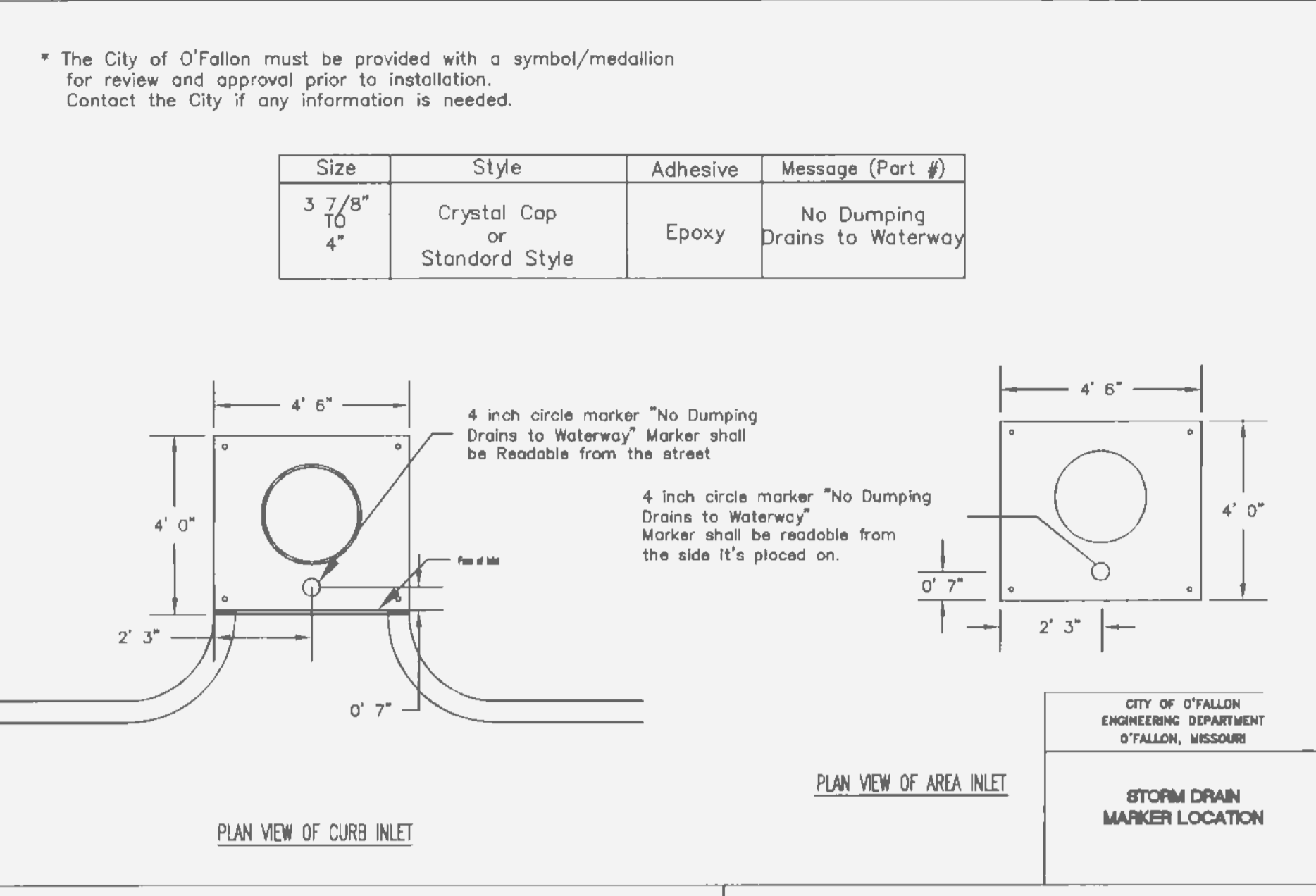


* The discharge point of all flared end sections shall be protected by rip rap or other approved means.

** Rip rap shown at flared end sections will be evaluated in the field by the Engineer, Contractor, and City inspectors after installation for effectiveness and field modified, if necessary to reduce erosion on and off site.

Sieve	Maximum	Minimum
12 inch	90	70
6 inch	30	10
1/2 inch	5	0

MSD Type 5 Rock Blanket (% By Weight Passing)



* All other Storm or Sanitary Sewer Details will be by M.S.D. 2007 Standards and Specifications.

CITY OF O'FALLON
ENGINEERING DEPARTMENT
O'FALLON, MISSOURI

SEWER CONSTRUCTION DETAILS
STREET INLET SUMPS

Provide a marking on the storm sewer inlets. The City will allow the following markers and adhesive procedures only as shown in the table below or an approved equal. "Peel and stick" adhesive pads will not be allowed.

Manufacturer	Size	Adhesive	Style	Message (Part #)	Website
ACP International	3 7/8"	Epoxy	Crystal Cap	No Dumping Drains To Waterways (SD-W-CC)	www.acpinternational.com
DAS Manufacturing, Inc.	4"	Epoxy	Standard Style	No Dumping Drains To Stream (MSDS)	www.dasmanufacturing.com

PANERA BREAD BAKERY
CAFE #692
CONSTRUCTION PLANS

ST. CHARLES ENGINEERING & SURVEYING, INC.
801 S. FIFTH STREET, SUITE 202
ST. CHARLES, MO 63301
TEL: (888) 947-8907
FAX: (888) 947-8448



ENGINEER SIGNATURE
BLOCK

STATE OF MISSOURI
MICHAEL NEWELL
LICENSE NUMBER E-22483
EXPIRES 8/10/14
ELECTRONIC
MICHAEL NEWELL WEINERS
CIVIL ENGINEER PE-22483

Developer / Owner Information
K PROPERTIES HOLDINGS, LLC
1704 NORTH FOURTH STREET
ST. CHARLES, MO 63301
CONTACT: MIKE THOLE
(314) 220-1205

STORM SEWER DETAILS

P&Z No. 1812.03
Approval Date: 5/2/2013
City No. 14-63CP

Page No.
10