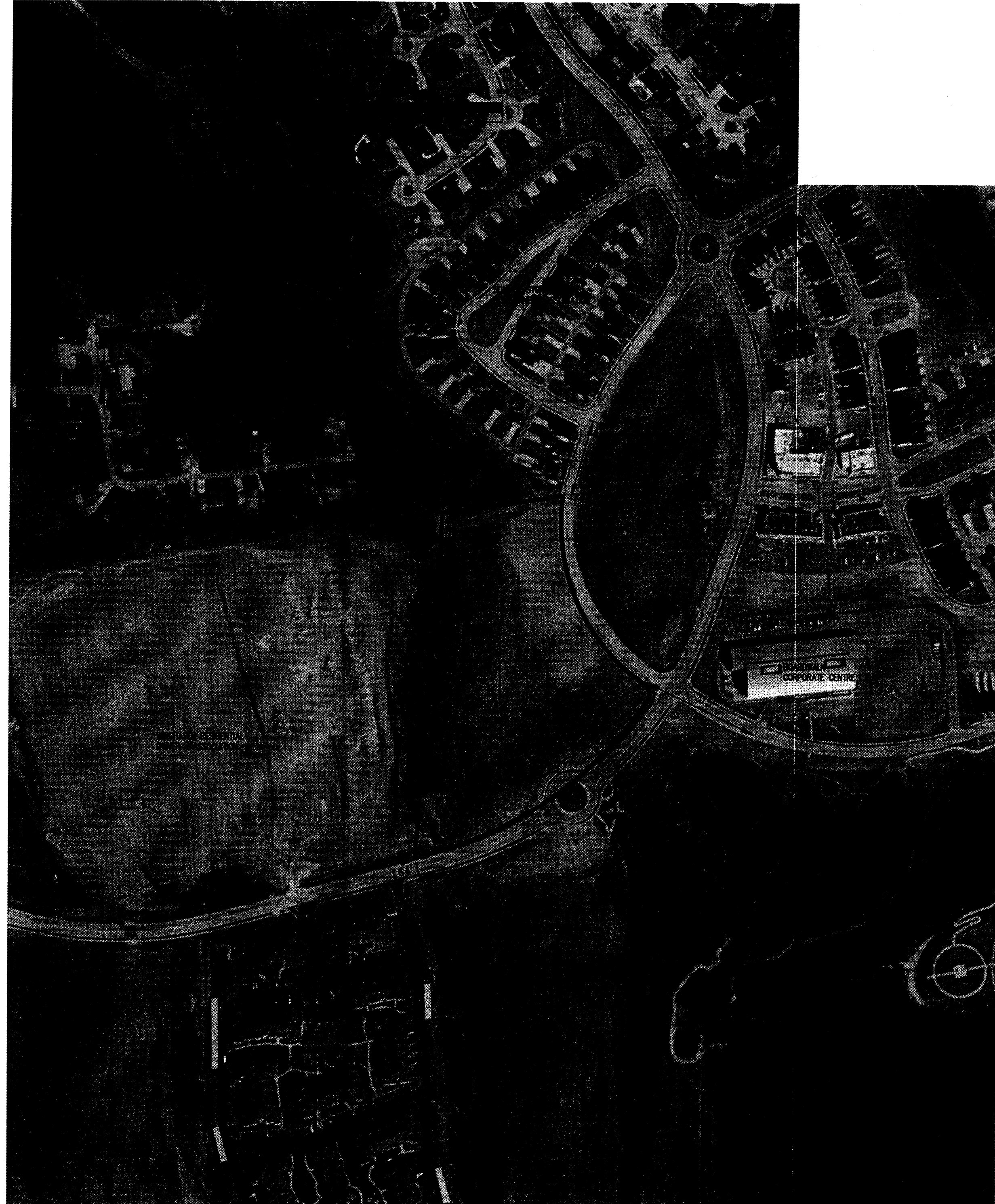


STORM SEWER NOTES

- 1.) ALL CONCRETE PIPE SHALL BE REINFORCED, AND CONFORM TO A.S.T.M. DESIGNATION C76 CLASS III UNLESS OTHERWISE NOTED.
- 2.) ALL STORM SEWER STRUCTURES WITHIN PROJECT SITE TO BE CONSTRUCTED IN ACCORDANCE WITH CITY OF OFALLON STORMWATER MANAGEMENT CONSTRUCTION SPECIFICATIONS.
- 3.) ALL TRENCHES UNDER AREAS TO BE PAVED AND UNDER EXISTING PAVING SHALL BE GRANULARLY FILLED WITH 3/4" MINUS CRUSHED LIMESTONE ONLY. BACK FILL SHALL BE PLACED IN ACCORDANCE WITH CITY OF OFALLON STANDARD CONSTRUCTION SPECIFICATIONS.
- 4.) ALL TRENCH BACK FILLS UNDER PAVEMENT WITHIN THE PUBLIC RIGHT-OF-WAY SHALL BE GRANULAR BACKFILLED. TRENCH BACK FILLS UNDER PAVED AREAS, OUTSIDE OF PUBLIC RIGHT-OF-WAY SHALL BE GRANULAR BACK FILL ALSO IN LIEU OF THE COMPACTED EARTH BACKFILL.
- 5.) 10" RING RUBBER GASKETED WATER TIGHT JOINTS SHALL BE USED FOR ALL STORM SEWER REACHES ON THE STORM SEWER PROFILE SHEETS.
- 6.) A 5/8" TRASH BAR WILL BE INSTALLED AND CENTERED ACROSS ALL AREA INLET AND CURB INLET OPENINGS.
- 7.) RIP-RAP SHOWN AT FLARED ENDS WILL BE EVALUATED IN THE FIELD AFTER INSTALLATION FOR EFFECTIVENESS AND FIELD MODIFIED, IF NECESSARY, TO REDUCE EROSION ON AND OFF-SITE.
- 8.) BRICK SHALL NOT BE USED IN THE CONSTRUCTION OF STORM SEWER STRUCTURES.
- 9.) ALL CONCRETE PIPES WILL BE INSTALLED WITH O-RING RUBBER TYPE GASKETS.
- 10.) CONNECTIONS AT ALL STORM SEWER STRUCTURES TO BE MADE WITH A-LOK JOINT OR EQUAL.
- 11.) HDPE PIPE IS TO BE N-12WT OR EQUAL AND TO MEET ASTM F1417 WATER TIGHT FIELD TEST.
- 12.) ALL STORM SEWER INLETS SHALL BE INSTALLED WITH A MARKER, BELOW IS THE RECOMMENDATIONS:

THE CITY WILL ALLOW THE FOLLOWING MARKERS AND ADHESIVE PROCEDURES ONLY AS SHOWN IN THE TABLE BELOW OR AN APPROVED EQUAL. PEEL AND STICK ADHESIVE PADS WILL NOT BE ALLOWED.

MANUFACTURER	SIZE	ADHESIVE	STYLE	MESSAGE (PART #)	WEBSITE
KAC INTERNATIONAL	3 7/8"	EPOXY	CRYSTAL CAP	NO DUMPING DRAINS TO WATERWAYS (SD-W-C2)	WWW.KACINTERNATIONAL.COM
DAS MANUFACTURING, INC.	4"	EPOXY	STANDARD STYLE	NO DUMPING DRAINS TO STREAM (SD-W-C2)	WWW.DASMANUFACTURING.COM



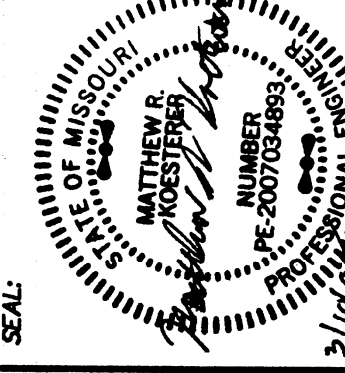
LAYOUT: 021
DATE: Mar 07, 2008 - 4:46pm
DRAWING: S:\065\0652007\07-075\07-075.dwg\MASS GRADING PLANS\0_GPLAN_G21_SPECC.dwg

PLANNING AND DEVELOPMENT DEPARTMENT FILE #9831.57 (AREA PLAN-APPROVED MAY 24TH, ORDINANCE #5178) - 9831.57.01 (FINAL PLAN)

Gole
and ASSOCIATES
INCORPORATED
10777 sunset office drive
saint louis, missouri 63127
p: 314 984 9887 f: 314 984 0587

DESIGNED BY
CJB
DRAWN BY
CJB
CHECKED BY
TDB
DATE
8/17/07
Job Number
07-075
Sheet Number
G2.1

**PARK AVENUE VILLAGE
MASS GRADING PLANS**
PHOENIX PARKWAY
OFALLON, MO



DEVELOPER/OWNER:
**MCEAGLE DEVELOPMENT
1001 BOARDWALK SPRINGS PL
OFALLON, MO 63366
PHONE: (636) 561-9323**

REVISIONS

DATE	BY	DESCRIPTION
11/17/2007	A	CITY OF OFALLON COMMENTS
12/11/2007	A	CITY OF OFALLON COMMENTS
02/25/2008	A	CITY OF OFALLON COMMENTS
03/07/2008	A	CITY OF OFALLON COMMENTS

THE PROFESSIONAL ENGINEER'S SIGNATURE AND PERSONAL SEAL APPEAR HEREON IN FULL COMPLIANCE WITH THE PROFESSIONAL ENGINEERING ACT OF MISSOURI. THE ENGINEER IS NOT RESPONSIBLE FOR ANY OTHER PLANS, SPECIFICATIONS, ESTIMATES, REPORTS OR OTHER DOCUMENTS OR INSTRUMENTS NOT SHOWN ON THIS SHEET. THE ENGINEER'S SIGNATURE AND SEAL ARE VALID FOR THE PROJECT TO WHICH THIS SEAL APPLIES.

SPECIFICATION SHEET