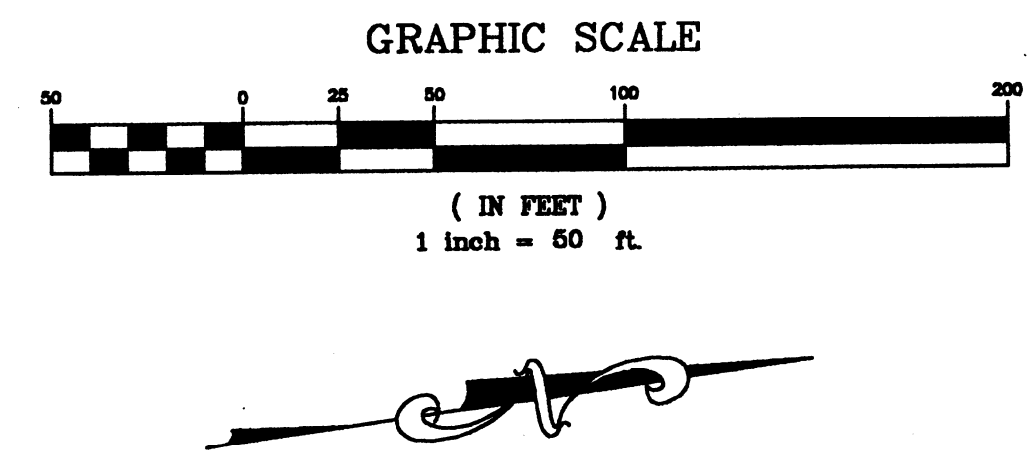
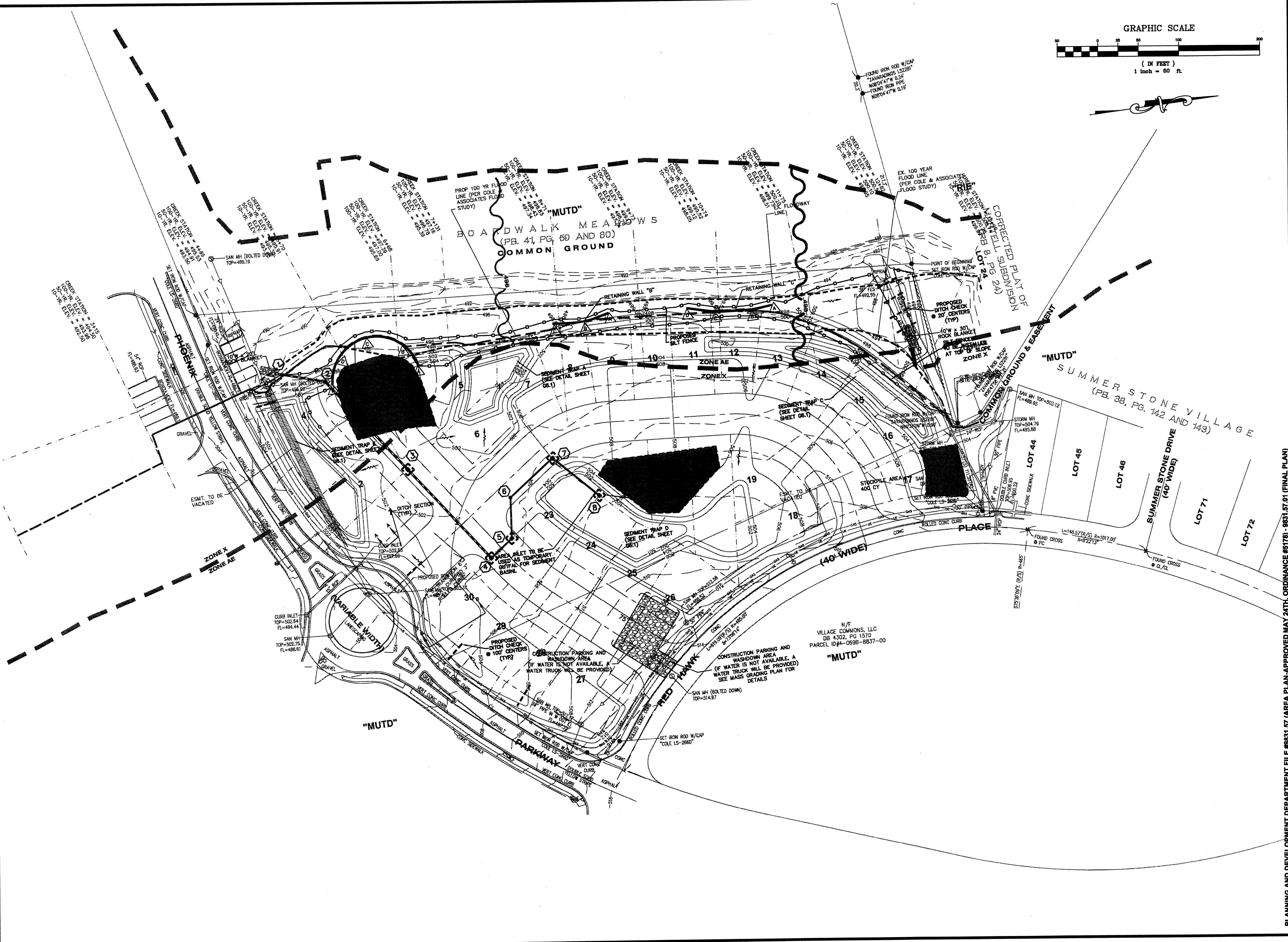


LAUNCH: 04.1 2008 - 4:46pm  
 DATE: Mar 07  
 DRAWING: S:\0655\06552007\07-0075\07-0075.dwg MASS GRADING PLANS\G4.0 EROSION CONTROL PLAN.dwg



REVISIONS	
DATE	DESCRIPTION
11/18/07	REVISED PER CITY OF O'FALLON COMMENTS
12/17/07	REVISED PER CITY OF O'FALLON COMMENTS
02/07/2008	REVISED PER CITY OF O'FALLON COMMENTS
03/07/2008	REVISED PER CITY OF O'FALLON COMMENTS

DEVELOPER/OWNER:  
**MCEAGLE DEVELOPMENT**  
 1001 BOARDWALK SPRINGS PL  
 O'FALLON, MO 63366  
 PHONE: (636) 561-9323

THE PROFESSIONAL ENGINEER'S SIGNATURE AND PERSONAL SEAL APPEAR HEREON. THE ENGINEER ASSUMES RESPONSIBILITY ONLY FOR WHAT APPEARS ON THIS PLAN, AND DOES NOT ASSUME RESPONSIBILITY FOR ESTIMATES, REPORTS, OR OTHER DOCUMENTS OF INSTRUMENTS NOT SEALED BY THE UNLICENSED PROFESSIONAL RELYING TO, OR REFERRED TO, BE USED FOR ANY PART OR PARTS OF THE PROJECT TO WHICH THIS SEAL APPLIES.

SEAL: MATTHEW J. MOSEBACHER, REGISTERED PROFESSIONAL ENGINEER, NUMBER PE-200704683, EXPIRES 12/31/2010

---

PLANNING AND DEVELOPMENT DEPARTMENT FILE #9831.57 (AREA PLAN-APPROVED MAY 24TH, ORDINANCE #178) - 9831.57.01 (FINAL PLAN)

**PARK AVENUE VILLAGE MASS GRADING PLANS**  
 PHOENIX PARKWAY  
 O'FALLON, MO

**and ASSOCIATES INCORPORATED**  
 10777 sunset office drive  
 saint louis, missouri 63127  
 p. 314.984.9887 f. 314.984.0587

DESIGNED BY: C.B.  
 DRAWN BY: C.B.  
 CHECKED BY: TDB  
 DATE: 8/17/07  
 Job Number: 07-075  
 Sheet Number: G4.0

**EROSION CONTROL PLAN**