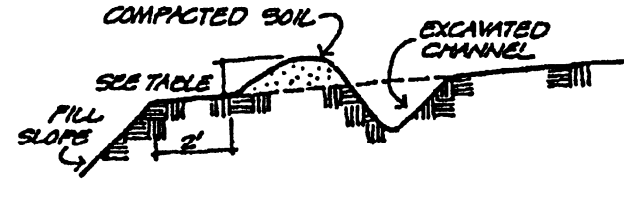


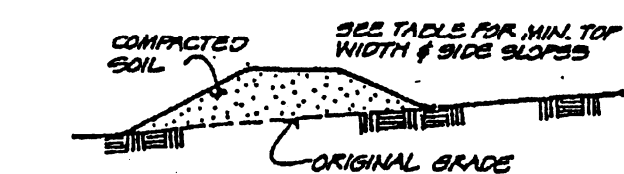
**DIVERSIONS**  
For Urban Development Sites  
**APPENDIX B**

\*\* Outlets for diversions must be stable. Stable outlets consist of grass waterways, earthen channels with capacity adequate to prevent gully erosion, grade stabilization structures or other practices as approved by the Designated Official.

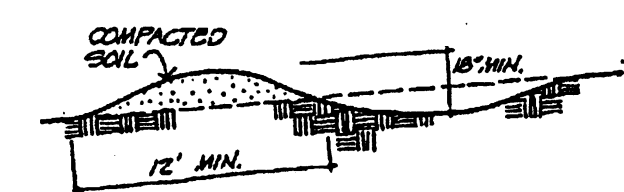
**Combination Diversion**  
Used at the top of a fill slope.



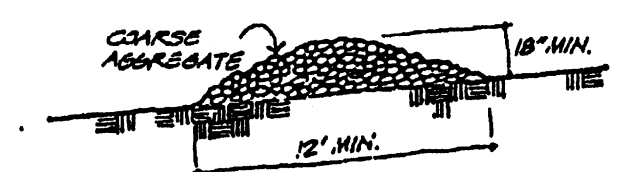
**Earth Ridge Diversion**  
Used around the perimeter of a construction site.



**Combination Diversion**  
General use.



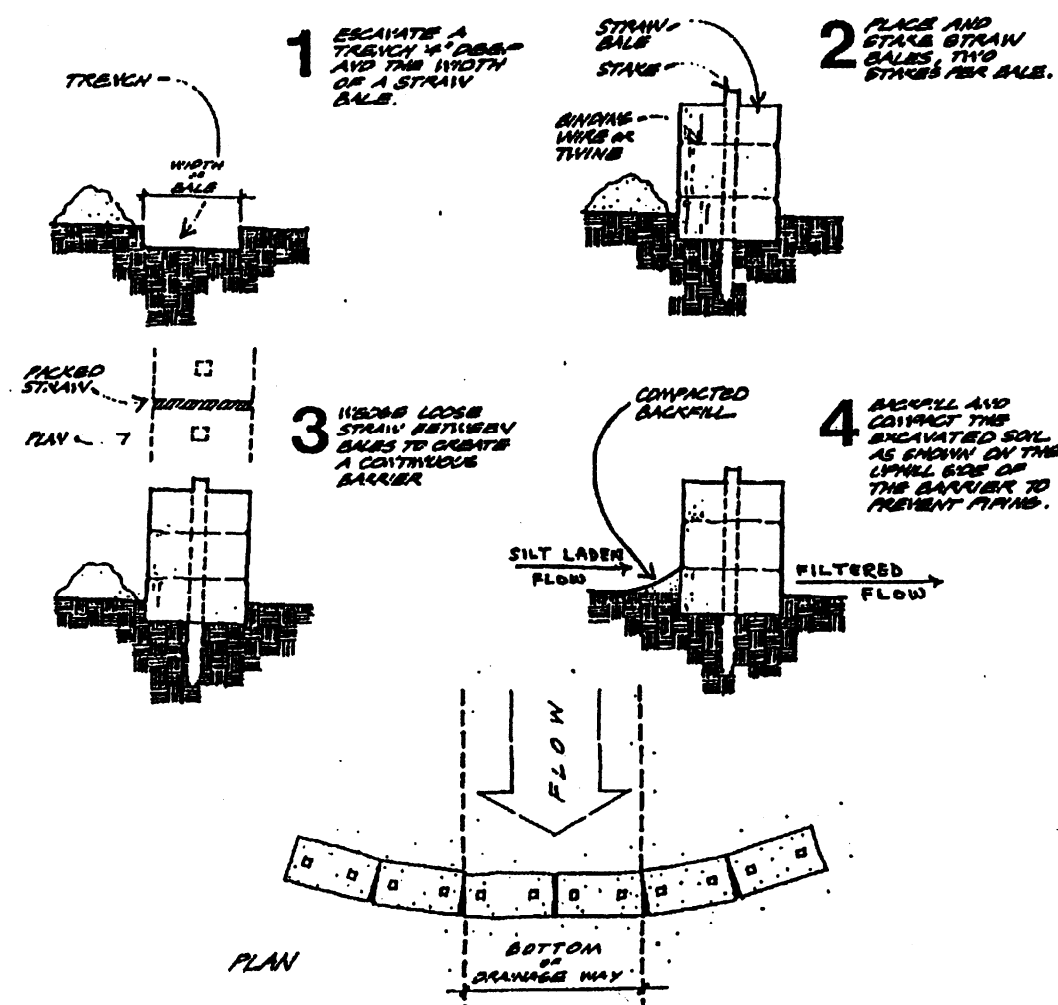
**Gravel Ridge Diversion**  
General use.



(7)

**1 DIVERSION DITCH DETAIL**  
SCALE: N.T.S. REF. DWG.

**STRAW BALE BARRIERS**  
For Urban Development Sites  
**APPENDIX C**



Placement and Construction of a Straw Bale Barrier

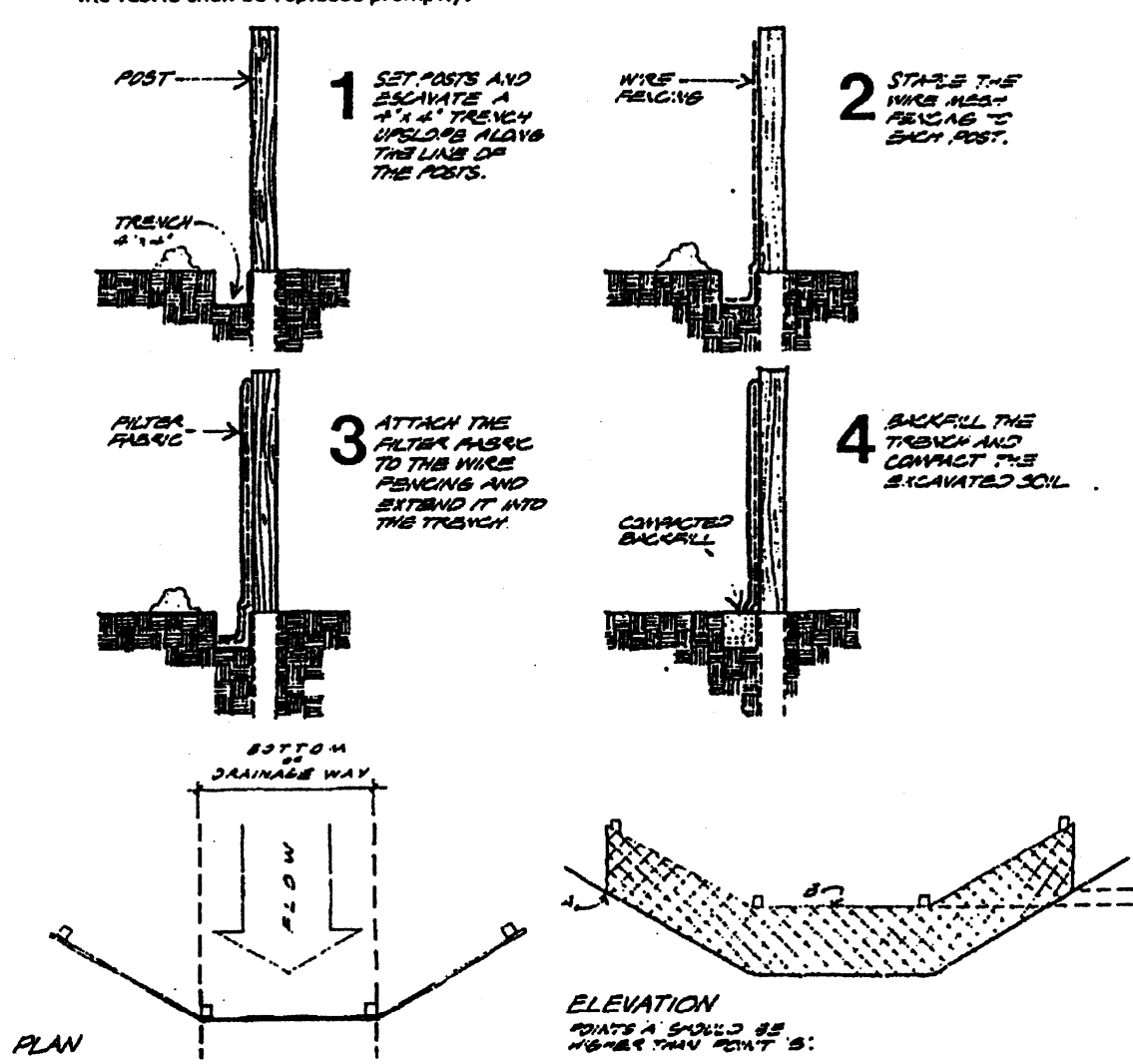
(8)

**2 DITCH CHECK DETAIL**  
SCALE: N.T.S. REF. DWG.

**SYNTHETIC FILTER BARRIERS**  
For Urban Development Sites  
**APPENDIX D**

**Maintenance**

- Filter barriers shall be inspected immediately after each rainfall and at least daily during prolonged rainfall. Any required repairs shall be made immediately.
- Should the fabric decompose or become ineffective prior to the end of the expected usable life and the barrier still be necessary, the fabric shall be replaced promptly.
- Sediment deposits should be removed after each storm event. They must be removed when deposits reach approximately half the height of the barrier.
- Any sediment deposits remaining in place after the silt fence or filter barrier is no longer required shall be dressed to conform with the existing grade, prepared and seeded.



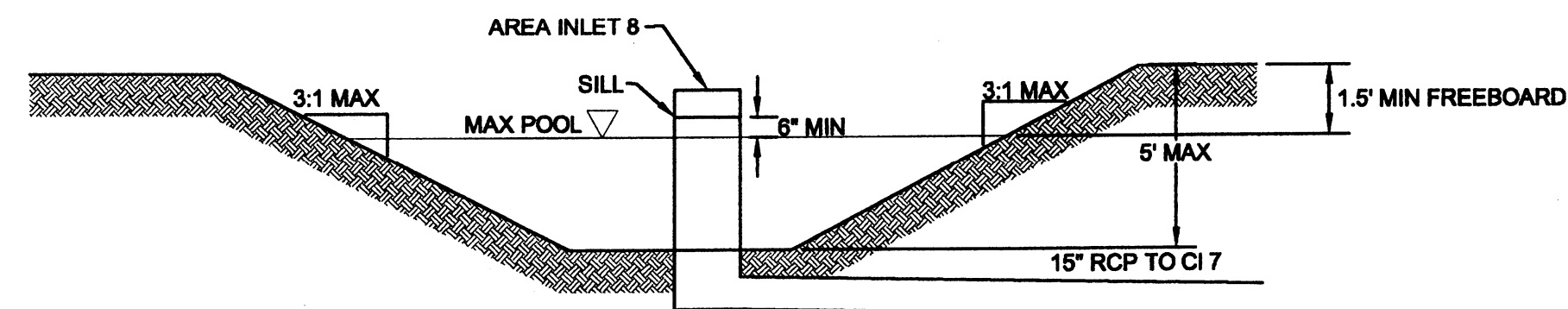
Placement and Construction of a Synthetic Filter Barrier

(9)

**4 DITCH CHECK DETAIL**  
SCALE: N.T.S. REF. DWG.

**SEDIMENT TRAP ELEVATIONS**

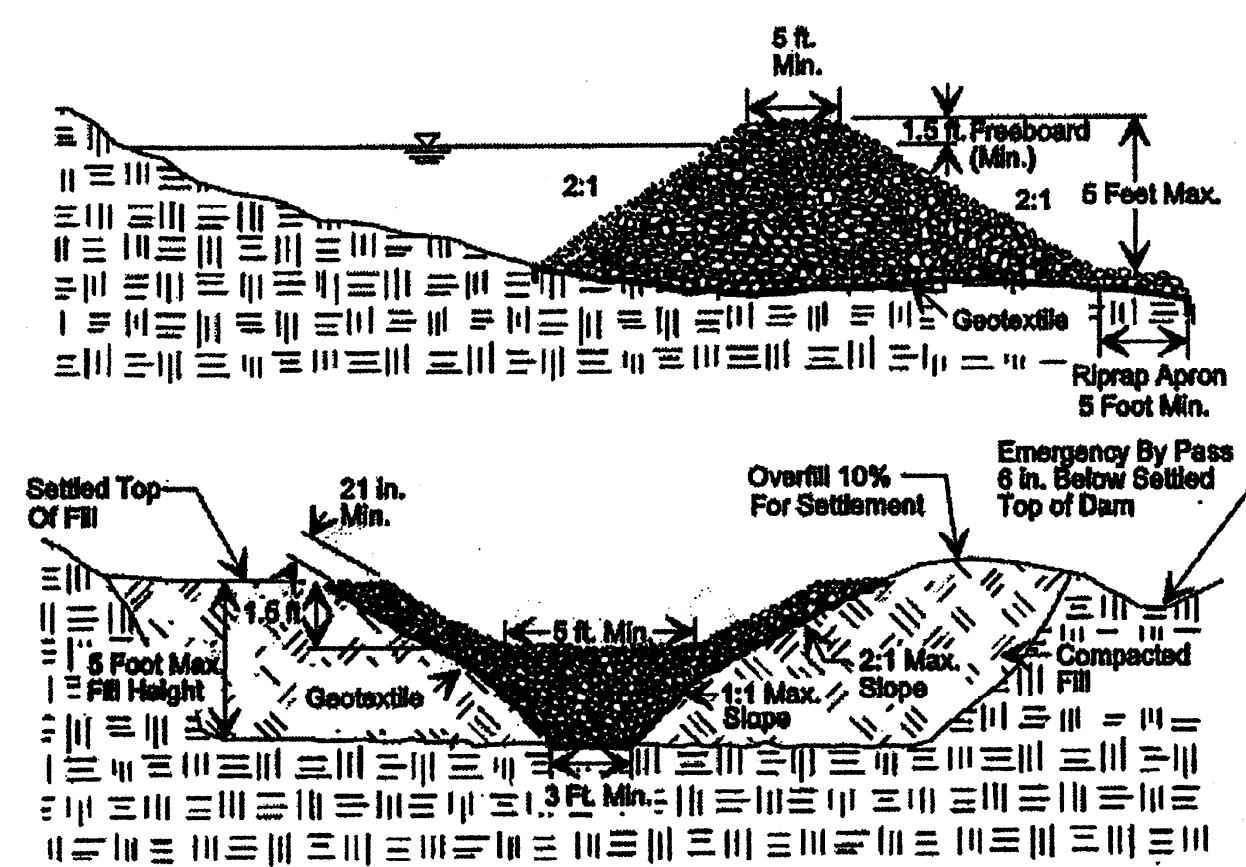
SED. TRAP	TOP ELEV.	BOTTOM ELEV.	STORAGE ELEV.	HIGH WATER ELEV.	EMERGENCY HW ELEV.	RISER ELEV.	RISER LENGTH
D	504.50	501.00	501.53	502.31	503.19	503.00	12.67 ft.



**5 SEDIMENT TRAP D DETAIL**  
SCALE: N.T.S. REF. DWG.

**SEDIMENT TRAP ELEVATIONS**

SED. TRAP	TOP ELEV.	BOTTOM ELEV.	STORAGE ELEV.	HIGH WATER ELEV.	EMERGENCY HW ELEV.	WEIR ELEV.	WEIR WIDTH
A	500.00	495.00	496.35	498.48	498.83	498.50	5.0 ft.
C	502.00	497.00	498.69	500.43	500.86	500.50	6.0 ft.
E	500.00	495.00	496.40	498.44	498.91	498.50	8.0 ft.



**6 SEDIMENT TRAP A, C, & E DETAIL**  
SCALE: N.T.S. REF. DWG.

**3 SILT FENCE DETAIL**  
SCALE: N.T.S. REF. DWG.

**STABILIZED CONSTRUCTION ENTRANCE**  
0.01 to scale

**CONSTRUCTION SPECIFICATIONS**

- Stone Size - Use 3" stone or fractured or recycled concrete equivalent.
- Length - 16' required, but not less than 10 feet (except on a single residential lot where a 30 foot minimum length would apply).
- Thickness - not less than 16" (4) inches.
- Width - 60" (20) foot minimum, but not less than the full width at points where ingress or egress occurs.
- Filter Cloth - Filter cloth shall be placed over the entire area prior to placing of stone. Filter cloth will not be required on a single residential lot.
- Surface Water - All surface water flowing or directed toward construction entrances shall be piped across the entrance. If piping is impractical, a mountable berm with 5:2 slopes will be permitted.
- Maintenance - The entrance shall be maintained in a condition which will prevent tracking or bleeding of sediment into public rights-of-way. This may require periodic top dressing with additional stone as conditions demand and repair and/or cleanout of any measure used to trap sediment. All sediment spilled, dropped, washed or tracked onto public rights-of-way must be removed immediately.
- Making - Berms shall be cleaned to remove sediment prior to entrance onto public rights-of-way. When washing is required, it shall be done on an area stabilized with stone and which drains into an approved sediment trapping device.
- Periodic inspection and needed maintenance shall be provided after each rain.

IF WATER IS NOT AVAILABLE, A WATER TRUCK WILL BE PROVIDED.

LAYOUT: 06/17/2008 - 4:46pm DRAWING: S:\065\0652007\07-0075\07-0075.dwg MASS GRADING PLANS\06-0075\06-0075.dwg

**REVISIONS**

DATE	BY	DESCRIPTION
11/10/2007	LA	CITY OF O'FALLON COMMENTS
12/10/2007	LA	CITY OF O'FALLON COMMENTS
12/10/2007	LA	CITY OF O'FALLON COMMENTS
12/10/2007	LA	CITY OF O'FALLON COMMENTS
12/10/2007	LA	CITY OF O'FALLON COMMENTS
12/10/2007	LA	CITY OF O'FALLON COMMENTS

DEVELOPER/OWNER: MCEAGLE DEVELOPMENT 1001 BOARDWALK SPRINGS PL O'FALLON, MO 63366 PHONE: (636) 561-9323

THE PROFESSIONAL ENGINEER'S SEAL AND SIGNATURE ARE REQUIRED FOR ALL OTHER PLANS PREPARED BY THIS OFFICE. ANY OTHER DOCUMENTS OR INSTRUMENTS NOT PREPARED BY THIS OFFICE ARE THE PROPERTY OF THE PROJECT TO WHICH THIS SEAL APPLIES.

SEAL OF MISSOURI PROFESSIONAL ENGINEER MATTHEW R. COLE PE 200705880

**PLANNING AND DEVELOPMENT DEPARTMENT FILE #0831.57 (AREA PLAN-APPROVED MAY 24TH, ORDINANCE #5178) - 0831.57.01 (FINAL PLAN)**

**PARK AVENUE VILLAGE MASS GRADING PLANS**  
PHOENIX PARKWAY  
O'FALLON, MO

**Cole and Associates INCORPORATED**  
10777 sunset office drive  
st. louis, missouri 63127  
p. 314.964.0687 f. 314.964.0687

DESIGNED BY: C.B.  
DRAWN BY: C.B.  
CHECKED BY: TDB  
DATE: 8/17/07  
Job Number: 07-075  
Sheet Number: G6.1

**DETAILS**