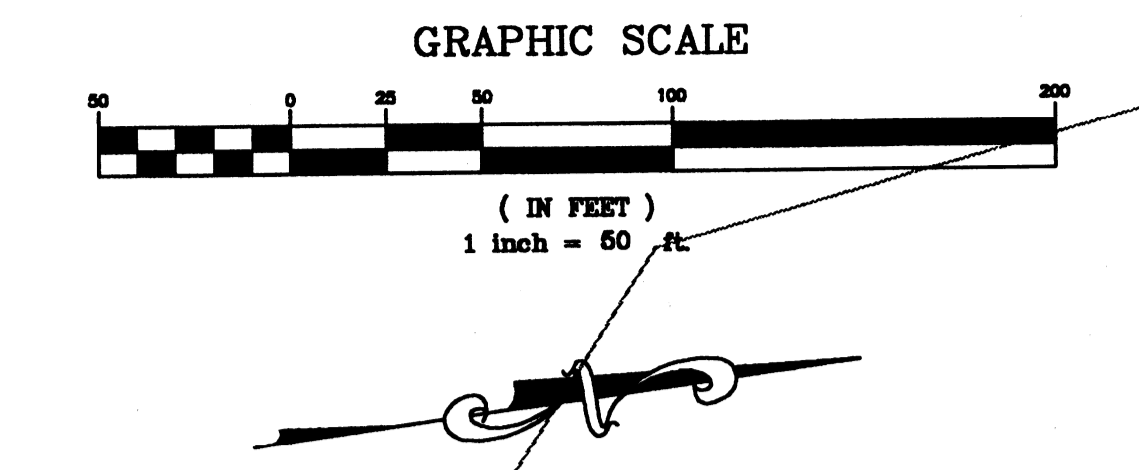
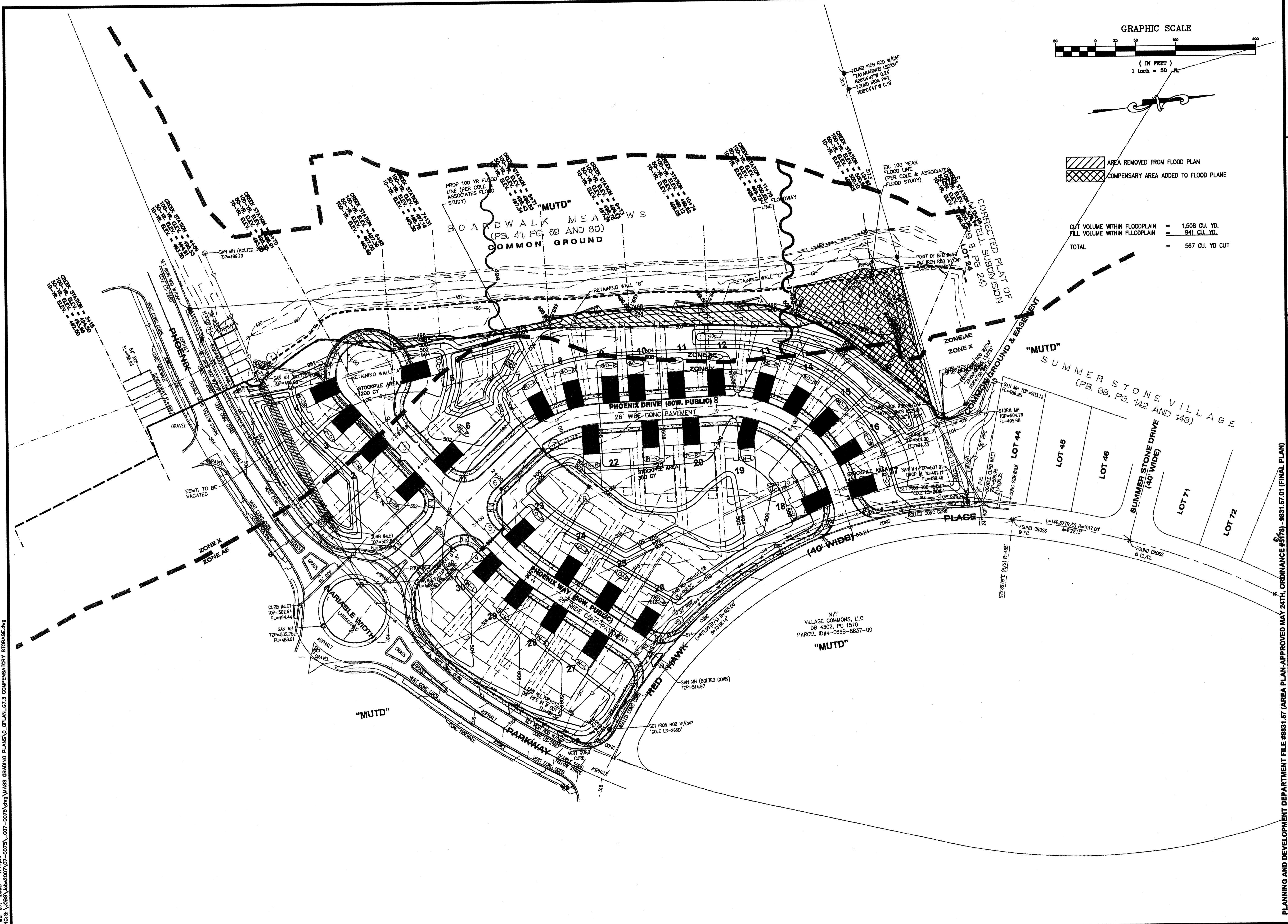


LAYOUT: G7.3
 DATE: Mar 07, 2008 - 4:47pm
 DRAWING: S:\V065\Jobs\2007\07-075\007-0075\wg\mass grading\PLANS\0_CPLAN_G7.3_COMPENSATORY_STORAGE.dwg



AREA REMOVED FROM FLOOD PLAN
 COMPENSARY AREA ADDED TO FLOOD PLAN

CUT VOLUME WITHIN FLOODPLAIN = 1,508 CU. YD.
 FILL VOLUME WITHIN FLOODPLAIN = 941 CU. YD.
 TOTAL = 567 CU. YD. CUT

PLANNING AND DEVELOPMENT DEPARTMENT FILE #9831.57 (AREA PLAN-APPROVED MAY 24TH, ORDINANCE #576) - 9831.57.01 (FINAL PLAN)

COLE and ASSOCIATES INCORPORATED
 10777 sunset office drive
 saint louis, missouri 63127
 p: 314 984 9887 f: 314 984 0587

DESIGNED BY CJB
 DRAWN BY CJB
 CHECKED BY TDB
 DATE 8/17/07
 Job Number 07-075
 Sheet Number G7.3

DEVELOPER/OWNER:
MCEAGLE DEVELOPMENT
 1001 BOARDWALK SPRINGS PL
 O'FALLOON, MO 63366
 PHONE: (636) 561-9323

| DATE | REVISIONS |
|------------|-----------|
| 02/25/2008 | A |
| 02/25/2008 | A |
| 02/25/2008 | A |
| 02/25/2008 | A |
| 02/25/2008 | A |
| 02/25/2008 | A |
| 02/25/2008 | A |
| 02/25/2008 | A |
| 02/25/2008 | A |
| 02/25/2008 | A |
| 02/25/2008 | A |

REVISIONS

MATTHEW R. COLE, P.E.
 PROFESSIONAL ENGINEER
 MISSOURI PROFESSIONAL ENGINEERING BOARD #45893
 3/10/08

COMPENSATORY STORAGE PLAN