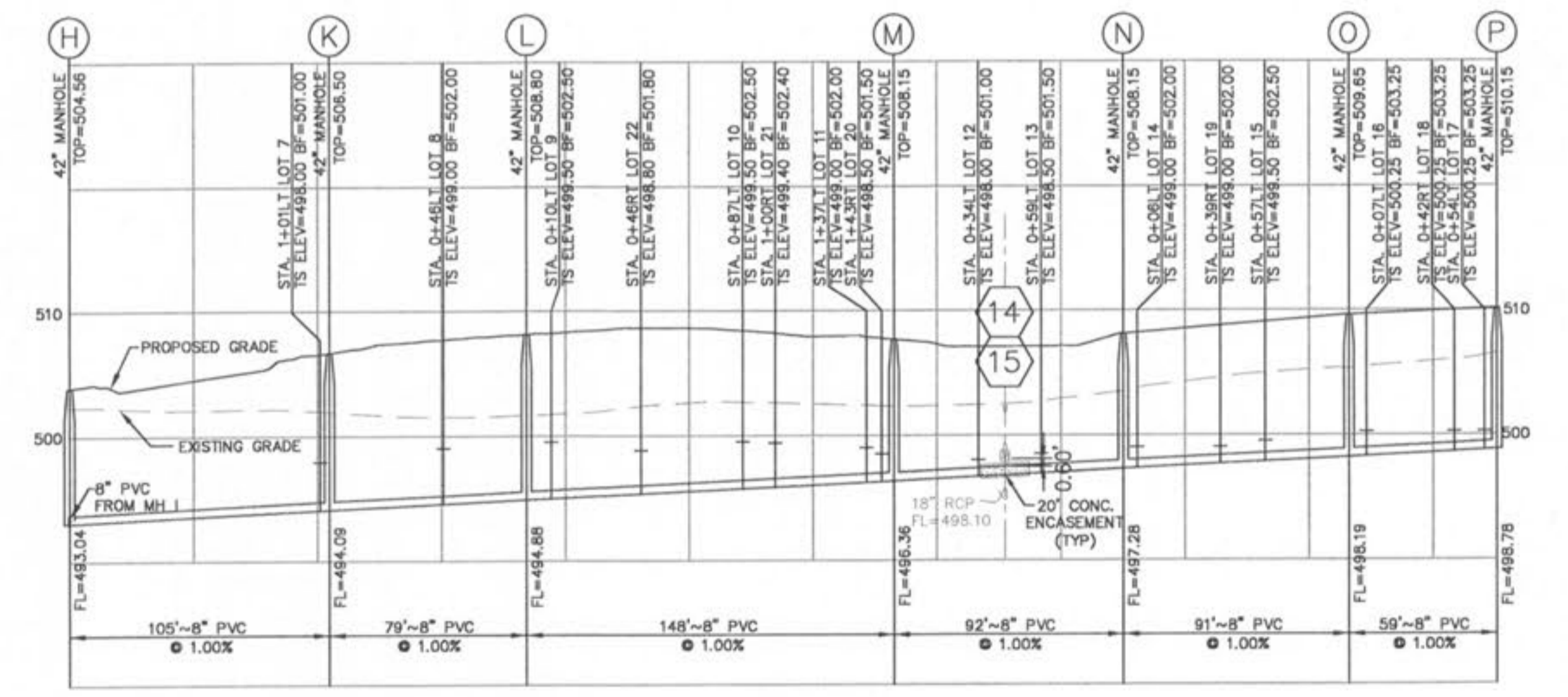
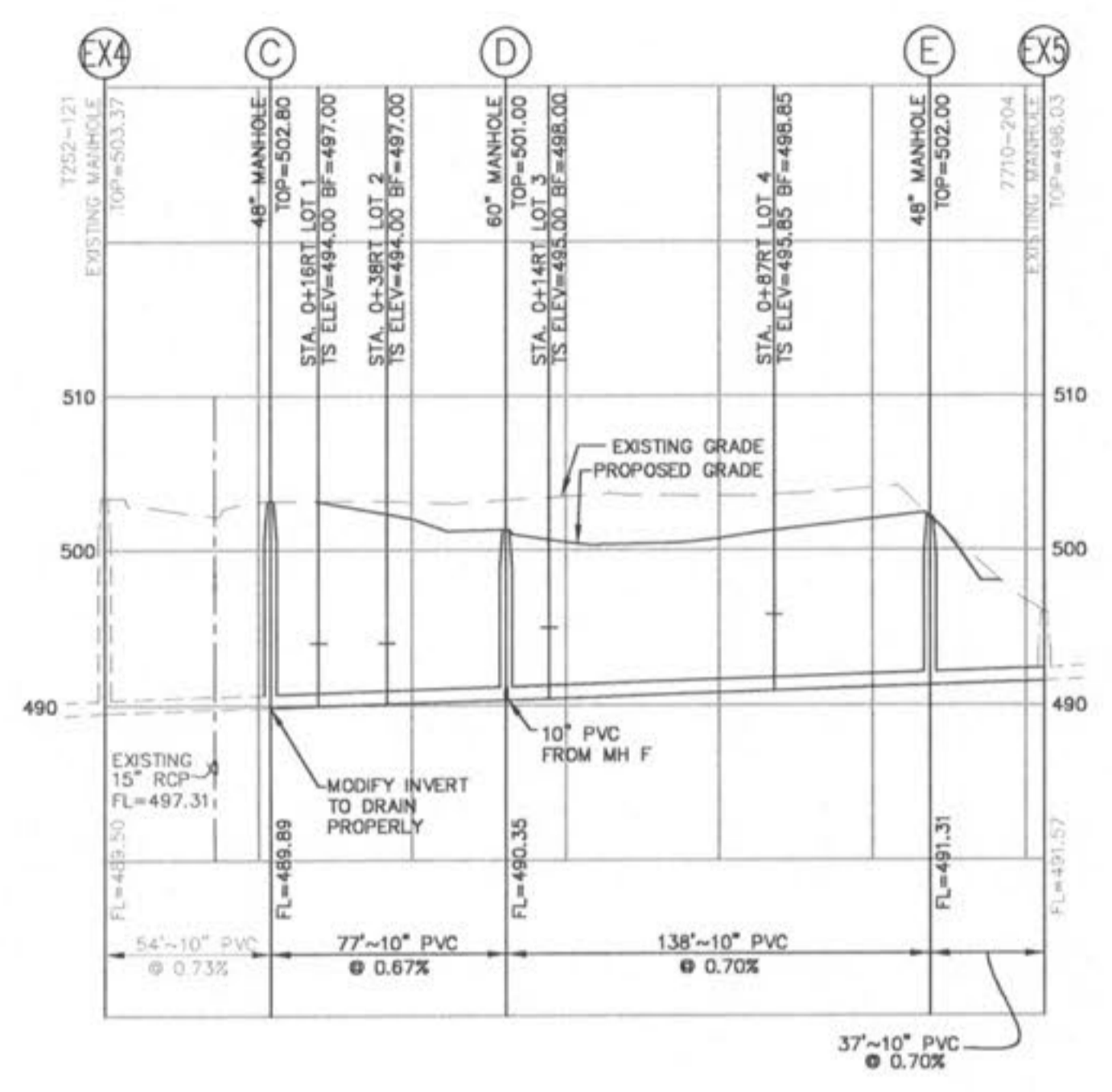
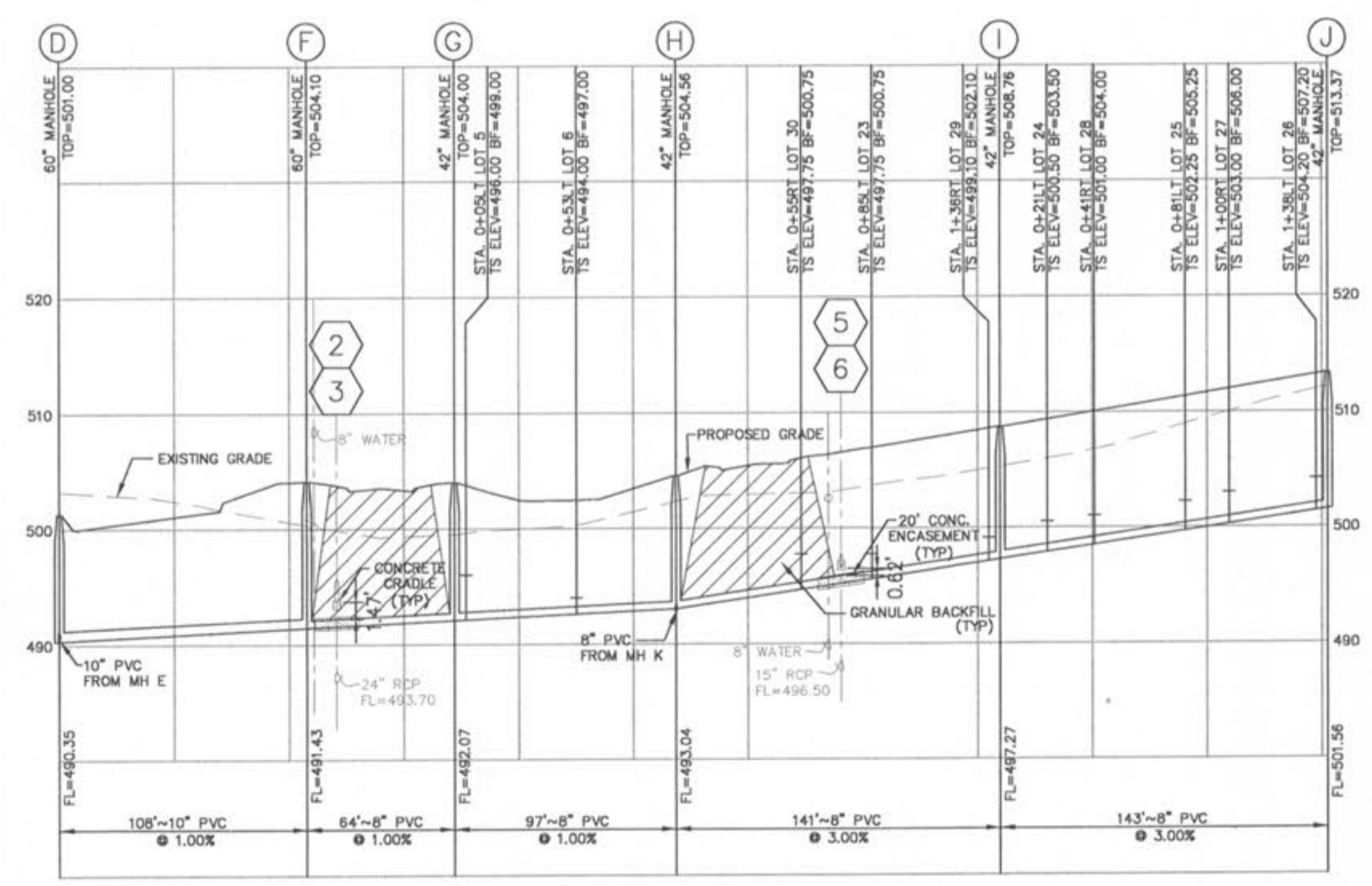


LAYOUT: C8.0
 DATE: Apr 23, 2008 - 11:04am
 DRAWING: S:\Jobs\Jobs2007\07-0073\07-0073_007-0073.dwg IMPROVEMENT PLANS\0_Plan_C8.0 SANITARY SEWER PROFILES.dwg



NOTE:
 1. EXISTING SANITARY SERVICE SHALL NOT BE INTERRUPTED

SCALE:
 1" = 50' HORIZ.
 1" = 10' VERT.

WATER JETTING NOTES

WATER JETTING, GRANULAR MATERIALS AND EARTH MATERIAL ASSOCIATED WITH NEW CONSTRUCTION OUTSIDE OF PAVEMENTS MAY BE JETTED, TAKING CARE TO AVOID DAMAGE TO NEWLY LAID SEWERS. THE JETTING SHALL BE PERFORMED WITH A PROBE ROUTE ON NOT GREATER THAN 7.5 FOOT CENTERS WITH THE JETTING PROBE CENTERED OVER AND PARALLEL WITH THE DIRECTION OF THE PIPE. TRENCH WIDTHS GREATER THAN 10- FEET WILL REQUIRE MULTIPLE PROBES EVERY 7.5 FOOT CENTERS.

A. DEPTH, TRENCH BACKFILL LESS THAN 8- FEET IN DEPTH SHALL BE PROBED TO A DEPTH EXTENDING TO HALF THE DEPTH OF THE TRENCH BACKFILL, BUT NOT LESS THAN 3- FEET. TRENCH BACKFILL GREATER THAN 8- FEET IN DEPTH SHALL BE PROBED TO HALF THE DEPTH OF THE TRENCH BACKFILL BUT NOT GREATER THAN 8- FEET.

B. EQUIPMENT, THE JETTING PROBE SHALL BE A METAL PIPE WITH AN EXTERIOR DIAMETER OF 1.5 TO 2- INCHES.

C. METHOD, JETTING SHALL BE PERFORMED FROM THE LOW SURFACE TOPOGRAPHIC POINT AND PROCEED TOWARDS THE HIGH POINT, AND FROM THE BOTTOM OF THE TRENCH TOWARDS THE SURFACE. THE FLOODING OF EACH JETTING PROBE SHALL BE STARTED SLOWLY ALLOWING SLOW SATURATION OF THE SOIL. WATER IS NOT ALLOWED TO FLOW AWAY FROM THE DITCH WITHOUT FIRST SATURATING THE TRENCH.

D. SURFACE BRIDGING, THE CONTRACTOR SHALL IDENTIFY THE LOCATIONS OF THE SURFACE BRIDGING (THE TENDENCY FOR THE UPPER BACKFILL CRUST TO ARCH OVER THE TRENCH RATHER THAN COLLAPSE AND CONSOLIDATE DURING THE JETTING PROCESS). THE CONTRACTOR SHALL BREAKDOWN THE BRIDGE AREAS USING AN APPROPRIATE METHOD SUCH AS WHEELS OR BUCKET OF A BACKHOE. WHEN THE SURFACE CRUST IS COLLAPSED, THE VOID SHALL BE BACKFILLED WITH THE SAME MATERIAL USED AS TRENCH BACKFILL AND RE- JETTED. COMPACTION OF THE MATERIALS WITHIN THE SUNKEN/ JETTED AREA SHALL BE COMPACTED SUCH THAT NO FURTHER SUBSURFACE SUBSIDENCE OCCURS.

PLANNING AND DEVELOPMENT DEPARTMENT FILE #9831.57 (AREA PLAN-APPROVED MAY 24TH, ORDINANCE #5178) - 9831.57.01 (FINAL PLAN)

planning • engineering • surveying • landscape architecture
COLE
 and ASSOCIATES
 INCORPORATED
 10777 sunset office drive
 saint louis, missouri 63127
 p. 314 984 9867 f. 314 984 0587

DESIGNED BY
 CJB
 DRAWN BY
 KDK
 CHECKED BY
 JFH
 DATE
 11/6/07
 Job Number
07-075
 Sheet Number
C8.0

DEVELOPER/OWNER:
THE VILLAGE AT PARK PLACE, LLC.
 1001 BOARDWALK SPRINGS PL
 OFALLON, MO 63366
 PHONE: (636) 561-9323

SEAL:
 PROFESSIONAL ENGINEER
 STATE OF MISSOURI
 NUMBER: 0000000000
 EXPIRES: 12/31/2008
 SIGNATURE: Matthew R. Wuester

DATE	REVISIONS
07/17/2008	A CITY OF OFALLON/PHOS #/2008 COMMENTS
07/17/2008	A CITY OF OFALLON/PHOS #/2008 COMMENTS
07/17/2008	A CITY OF OFALLON/PHOS #/2008 COMMENTS
07/17/2008	A CITY OF OFALLON/PHOS #/2008 COMMENTS