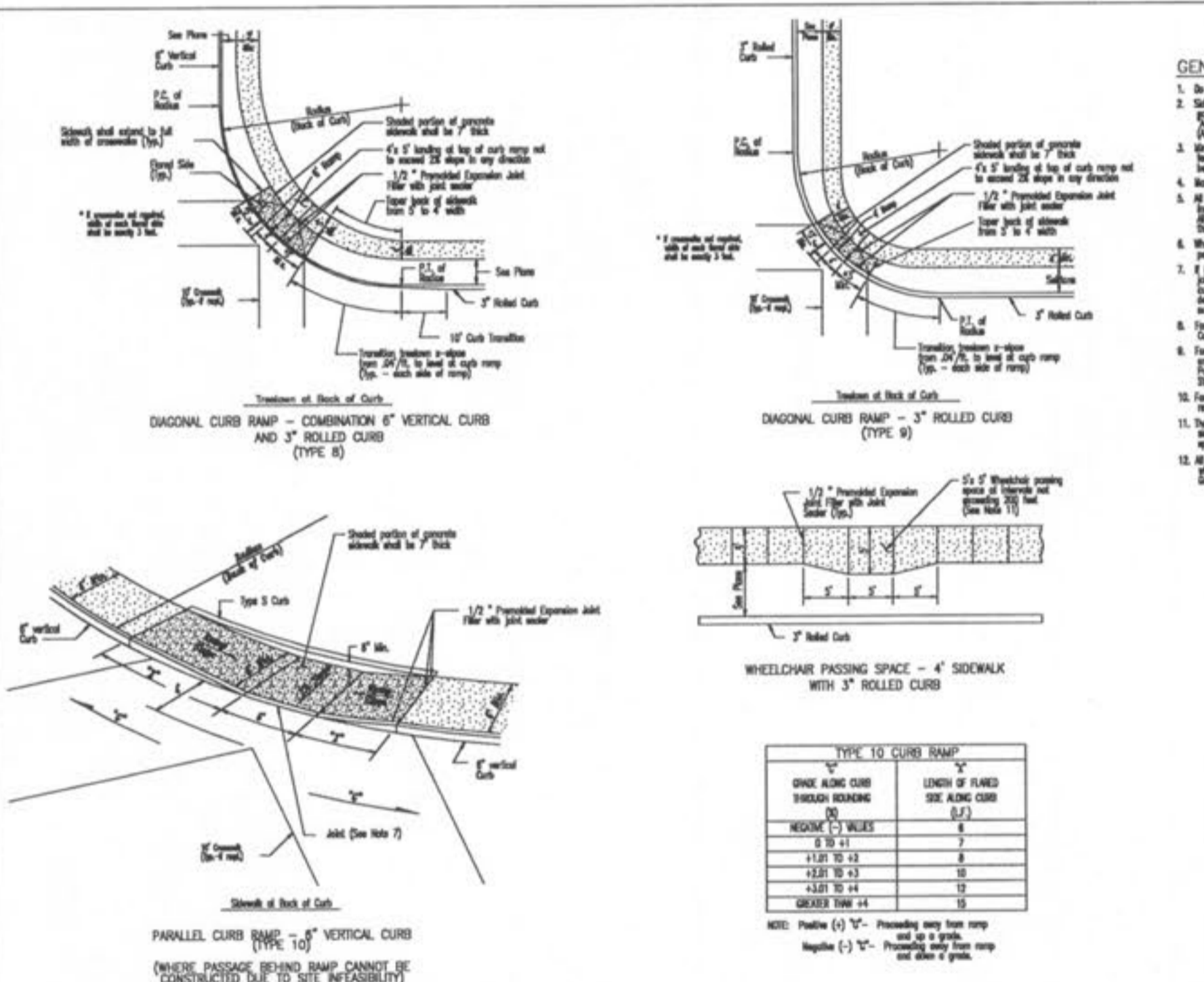


GENERAL NOTES

- Do not scale drawing. Follow dimensions.
- Show curb and sidewalk cross section and be constructed to conform with the standards set forth in the Missouri Department of Transportation Manual of Practice.
- Minimum sidewalk cross slope 0.02'/ft.
- All sidewalk widths shall be 4' except where noted otherwise.
- For concrete curb and sidewalk, use 3000 psi concrete with 4% steel reinforcement.
- For concrete curb and sidewalk, use 3000 psi concrete with 4% steel reinforcement.
- For concrete curb and sidewalk, use 3000 psi concrete with 4% steel reinforcement.
- For concrete curb and sidewalk, use 3000 psi concrete with 4% steel reinforcement.
- For concrete curb and sidewalk, use 3000 psi concrete with 4% steel reinforcement.
- For concrete curb and sidewalk, use 3000 psi concrete with 4% steel reinforcement.
- For concrete curb and sidewalk, use 3000 psi concrete with 4% steel reinforcement.
- For concrete curb and sidewalk, use 3000 psi concrete with 4% steel reinforcement.
- For concrete curb and sidewalk, use 3000 psi concrete with 4% steel reinforcement.
- For concrete curb and sidewalk, use 3000 psi concrete with 4% steel reinforcement.
- For concrete curb and sidewalk, use 3000 psi concrete with 4% steel reinforcement.
- For concrete curb and sidewalk, use 3000 psi concrete with 4% steel reinforcement.

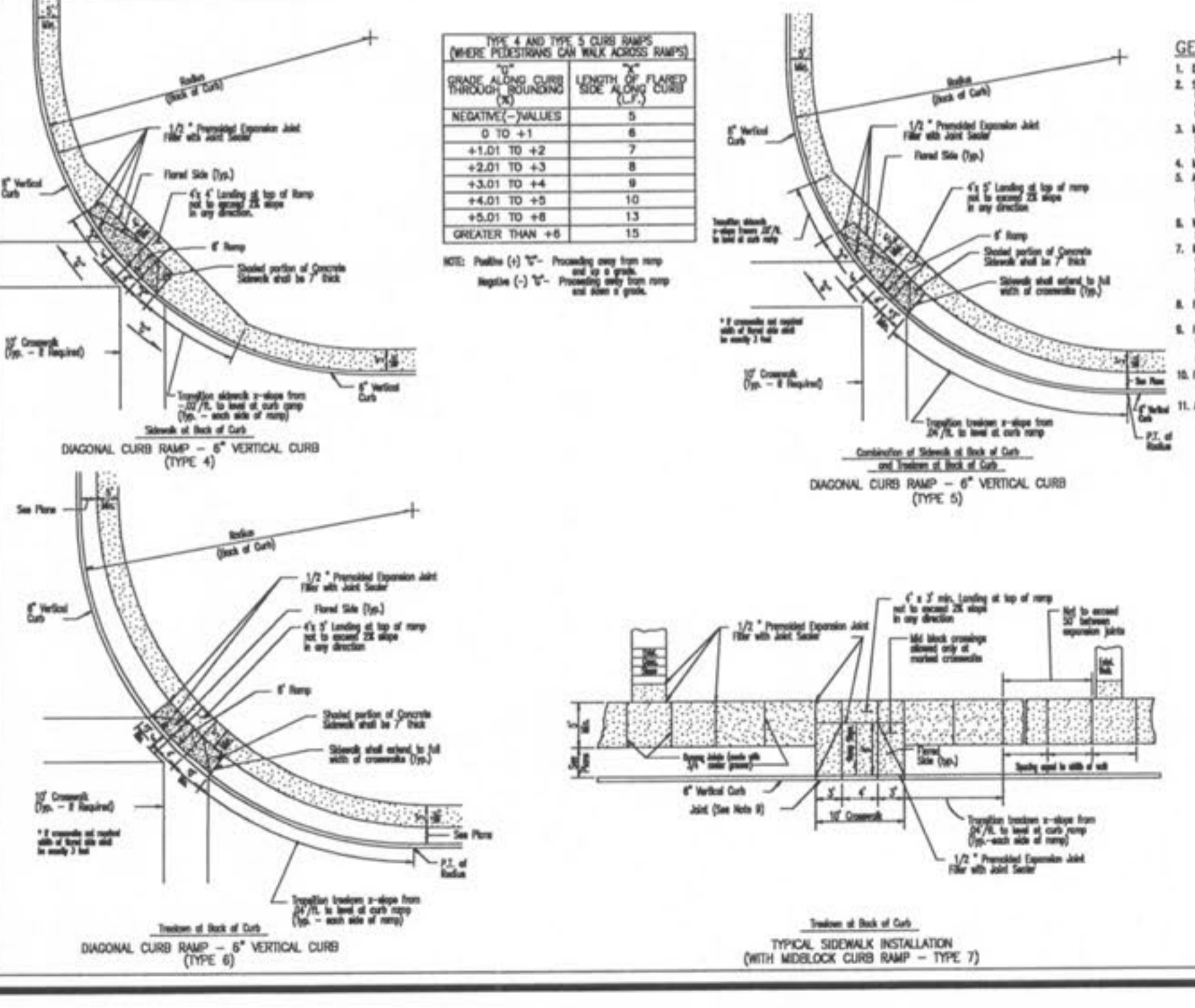
SAINT CHARLES COUNTY
 HIGHWAY DEPARTMENT
 ST. CHARLES, MISSOURI
PAVEMENT CONSTRUCTION DETAILS
CONCRETE SIDEWALK
AND CURB RAMPS
 DATE: June, 2002 DRAWING: C508.10



GENERAL NOTES

- Do not scale drawing. Follow dimensions.
- Show curb and sidewalk cross section and be constructed to conform with the standards set forth in the Missouri Department of Transportation Manual of Practice.
- Minimum sidewalk cross slope 0.02'/ft.
- All sidewalk widths shall be 4' except where noted otherwise.
- For concrete curb and sidewalk, use 3000 psi concrete with 4% steel reinforcement.
- For concrete curb and sidewalk, use 3000 psi concrete with 4% steel reinforcement.
- For concrete curb and sidewalk, use 3000 psi concrete with 4% steel reinforcement.
- For concrete curb and sidewalk, use 3000 psi concrete with 4% steel reinforcement.
- For concrete curb and sidewalk, use 3000 psi concrete with 4% steel reinforcement.
- For concrete curb and sidewalk, use 3000 psi concrete with 4% steel reinforcement.
- For concrete curb and sidewalk, use 3000 psi concrete with 4% steel reinforcement.
- For concrete curb and sidewalk, use 3000 psi concrete with 4% steel reinforcement.
- For concrete curb and sidewalk, use 3000 psi concrete with 4% steel reinforcement.
- For concrete curb and sidewalk, use 3000 psi concrete with 4% steel reinforcement.
- For concrete curb and sidewalk, use 3000 psi concrete with 4% steel reinforcement.
- For concrete curb and sidewalk, use 3000 psi concrete with 4% steel reinforcement.

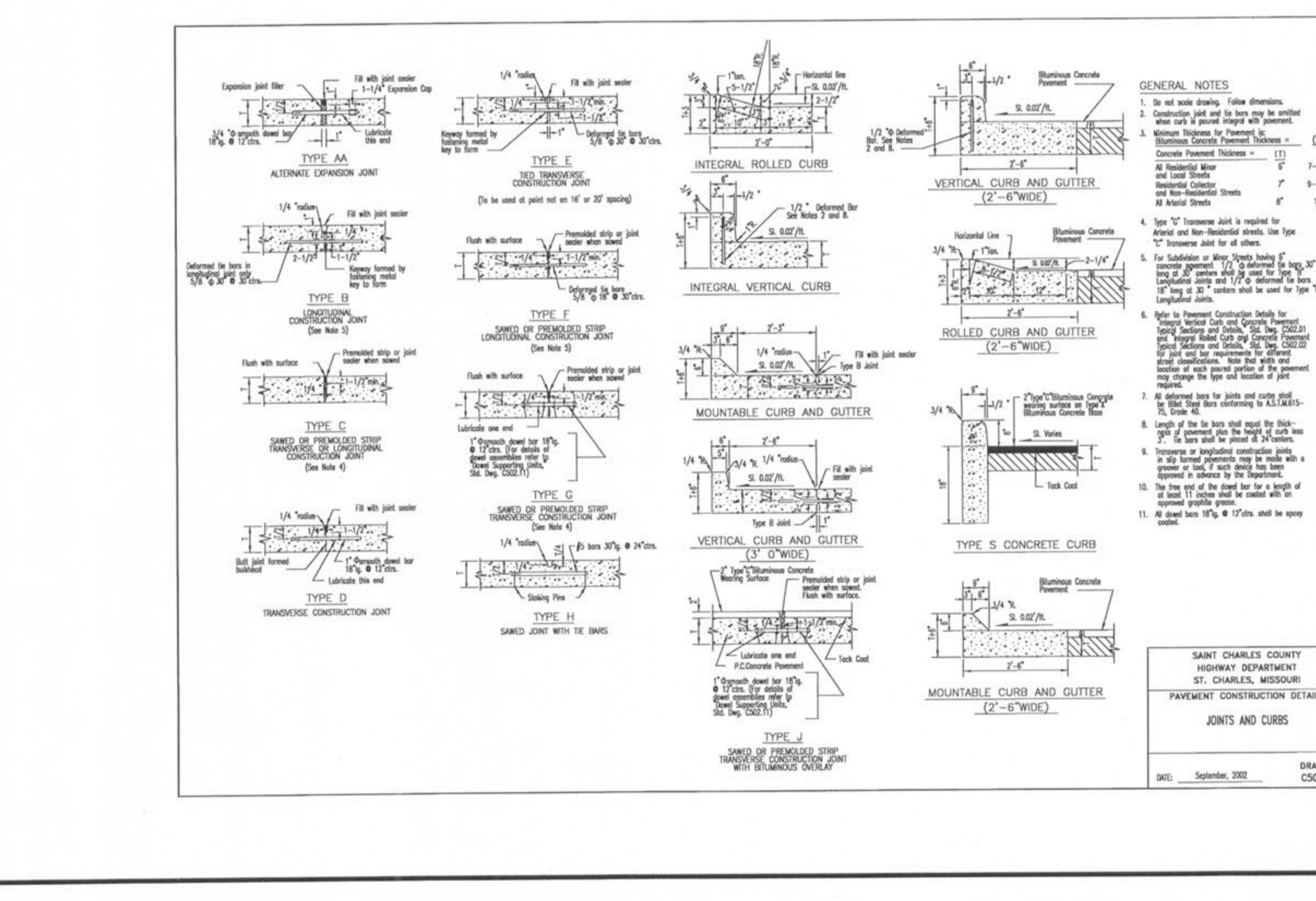
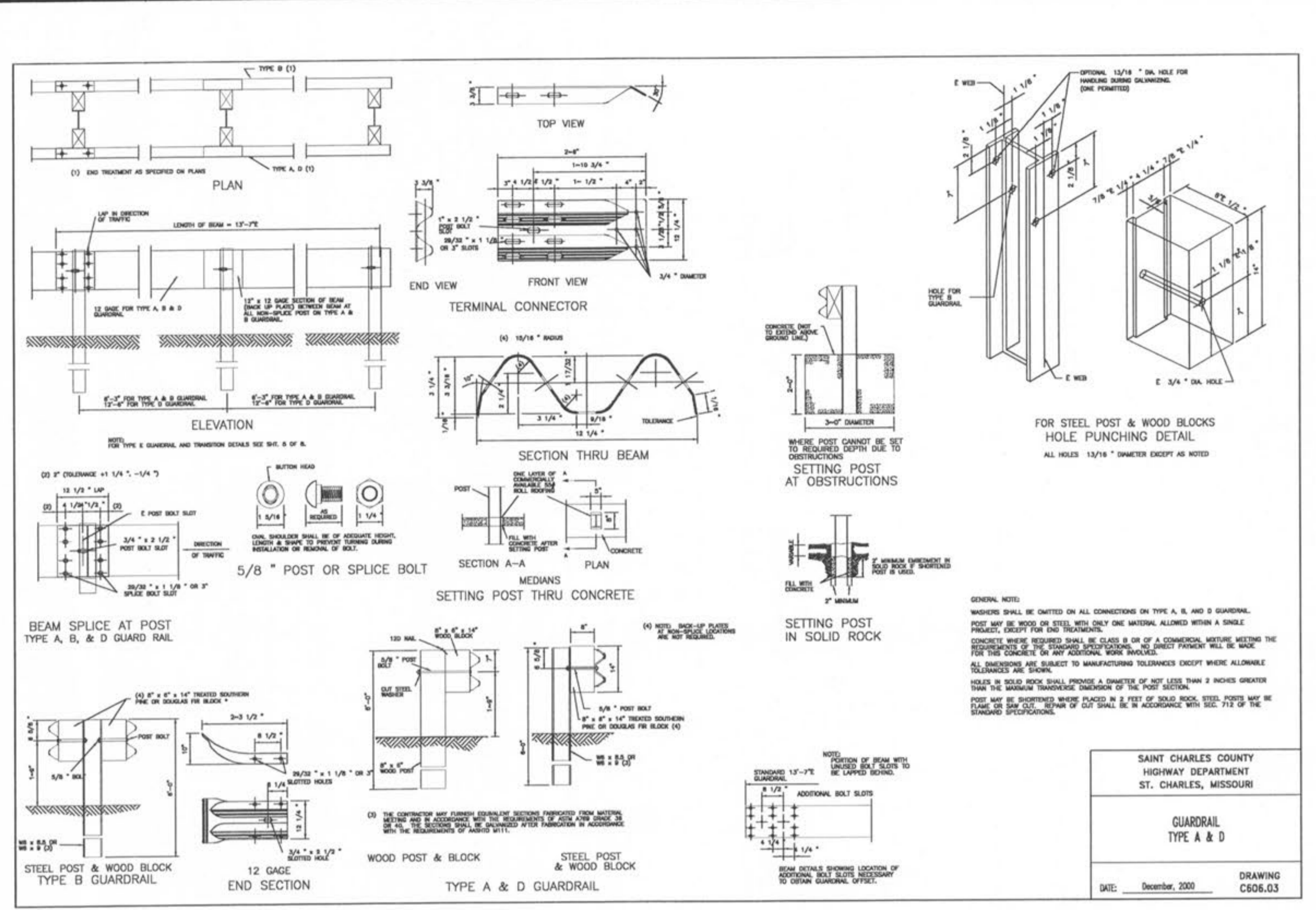
SAINT CHARLES COUNTY
 HIGHWAY DEPARTMENT
 ST. CHARLES, MISSOURI
PAVEMENT CONSTRUCTION DETAILS
CONCRETE SIDEWALK
AND CURB RAMPS
 DATE: June, 2002 DRAWING: C508.12



GENERAL NOTES

- Do not scale drawing. Follow dimensions.
- Show curb and sidewalk cross section and be constructed to conform with the standards set forth in the Missouri Department of Transportation Manual of Practice.
- Minimum sidewalk cross slope 0.02'/ft.
- All sidewalk widths shall be 4' except where noted otherwise.
- For concrete curb and sidewalk, use 3000 psi concrete with 4% steel reinforcement.
- For concrete curb and sidewalk, use 3000 psi concrete with 4% steel reinforcement.
- For concrete curb and sidewalk, use 3000 psi concrete with 4% steel reinforcement.
- For concrete curb and sidewalk, use 3000 psi concrete with 4% steel reinforcement.
- For concrete curb and sidewalk, use 3000 psi concrete with 4% steel reinforcement.
- For concrete curb and sidewalk, use 3000 psi concrete with 4% steel reinforcement.
- For concrete curb and sidewalk, use 3000 psi concrete with 4% steel reinforcement.
- For concrete curb and sidewalk, use 3000 psi concrete with 4% steel reinforcement.
- For concrete curb and sidewalk, use 3000 psi concrete with 4% steel reinforcement.
- For concrete curb and sidewalk, use 3000 psi concrete with 4% steel reinforcement.
- For concrete curb and sidewalk, use 3000 psi concrete with 4% steel reinforcement.
- For concrete curb and sidewalk, use 3000 psi concrete with 4% steel reinforcement.

SAINT CHARLES COUNTY
 HIGHWAY DEPARTMENT
 ST. CHARLES, MISSOURI
PAVEMENT CONSTRUCTION DETAILS
CONCRETE SIDEWALK
AND CURB RAMPS
 DATE: June, 2002 DRAWING: C508.11



REVISIONS

NO.	DATE	DESCRIPTION
1	02/17/2008	CITY OF O'FALLON/P/MS: E/2008: COMMENTS
2	03/17/2008	CITY OF O'FALLON/P/MS: E/2008: COMMENTS
3	04/17/2008	CITY OF O'FALLON/P/MS: E/2008: COMMENTS

DEVELOPER/OWNER:
THE VILLAGE AT PARK PLACE, LLC.
 1001 BOARDWALK SPRINGS PL
 O'FALLON, MO 63366
 PHONE: (636) 561-9323

DESIGNED BY:
Cole
 and ASSOCIATES
 INCORPORATED
 planning • engineering • surveying • landscape architecture

CHECKED BY:
 JFH

DATE:
 11/6/07

Job Number:
07-075

Sheet Number:
C10.8

PLANNING AND DEVELOPMENT DEPARTMENT FILE #8931.57 (AREA PLAN-APPROVED MAY 24TH, ORDINANCE #5178) - 9831.57.01 (FINAL PLAN)
PARK AVENUE VILLAGE
 IMPROVEMENT PLANS
 PHOENIX PARKWAY
 O'FALLON, MO

SAINT CHARLES COUNTY
 HIGHWAY DEPARTMENT
 ST. CHARLES, MISSOURI
PAVEMENT CONSTRUCTION DETAILS
JOINTS AND CURBS
 DATE: September, 2002 DRAWING: C502.03

SAINT CHARLES COUNTY
 HIGHWAY DEPARTMENT
 ST. CHARLES, MISSOURI
PAVEMENT CONSTRUCTION DETAILS
CONCRETE SIDEWALK
AND CURB RAMPS
 DATE: June, 2002 DRAWING: C508.11

SAINT CHARLES COUNTY
 HIGHWAY DEPARTMENT
 ST. CHARLES, MISSOURI
PAVEMENT CONSTRUCTION DETAILS
CONCRETE SIDEWALK
AND CURB RAMPS
 DATE: June, 2002 DRAWING: C508.10

SAINT CHARLES COUNTY
 HIGHWAY DEPARTMENT
 ST. CHARLES, MISSOURI
PAVEMENT CONSTRUCTION DETAILS
CONCRETE SIDEWALK
AND CURB RAMPS
 DATE: June, 2002 DRAWING: C508.12

SAINT CHARLES COUNTY
 HIGHWAY DEPARTMENT
 ST. CHARLES, MISSOURI
GUARDRAIL
TYPE A & D
 DATE: December, 2000 DRAWING: C506.03

SAINT CHARLES COUNTY
 HIGHWAY DEPARTMENT
 ST. CHARLES, MISSOURI
PAVEMENT CONSTRUCTION DETAILS
CONCRETE SIDEWALK
AND CURB RAMPS
 DATE: June, 2002 DRAWING: C508.11