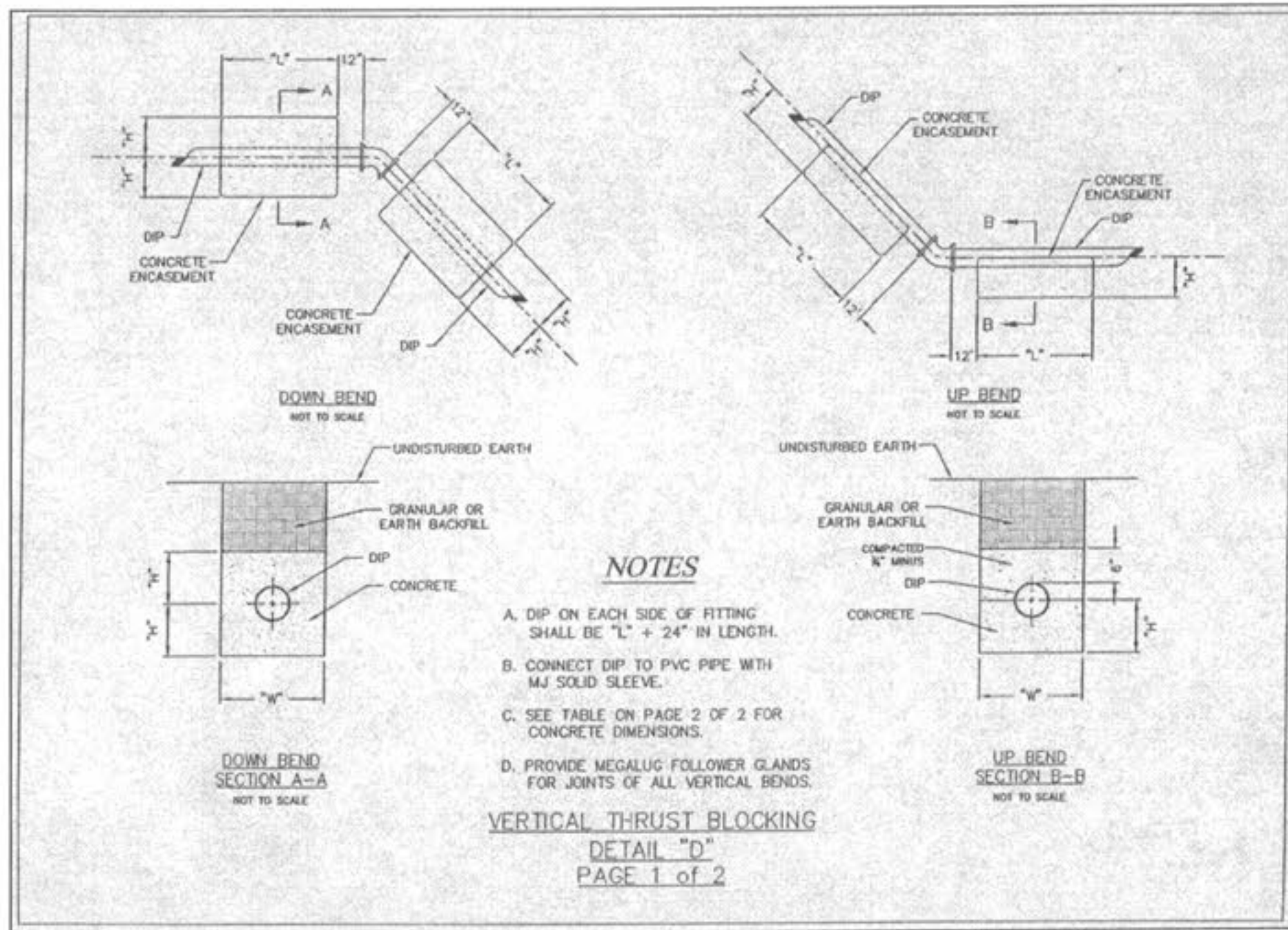
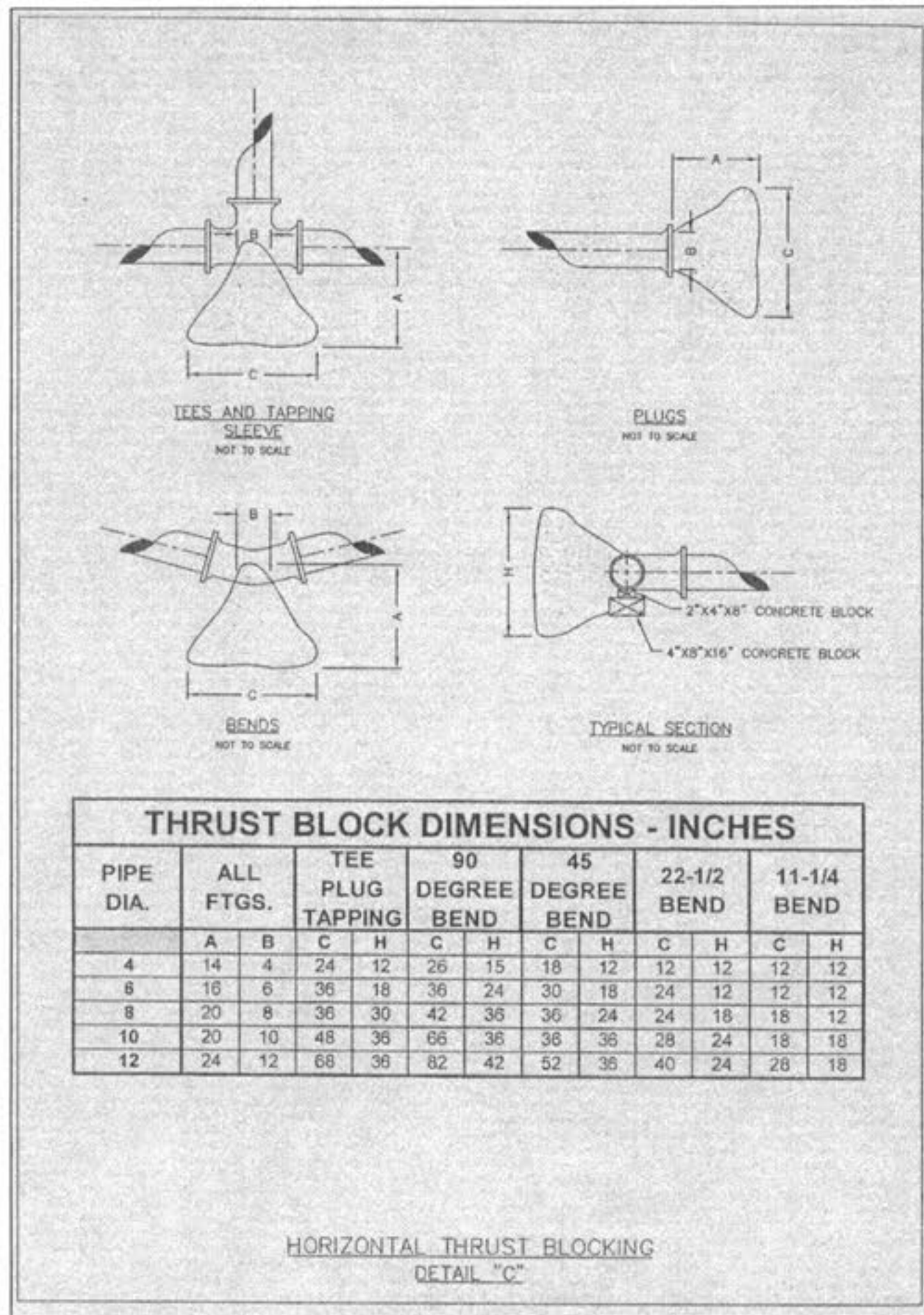


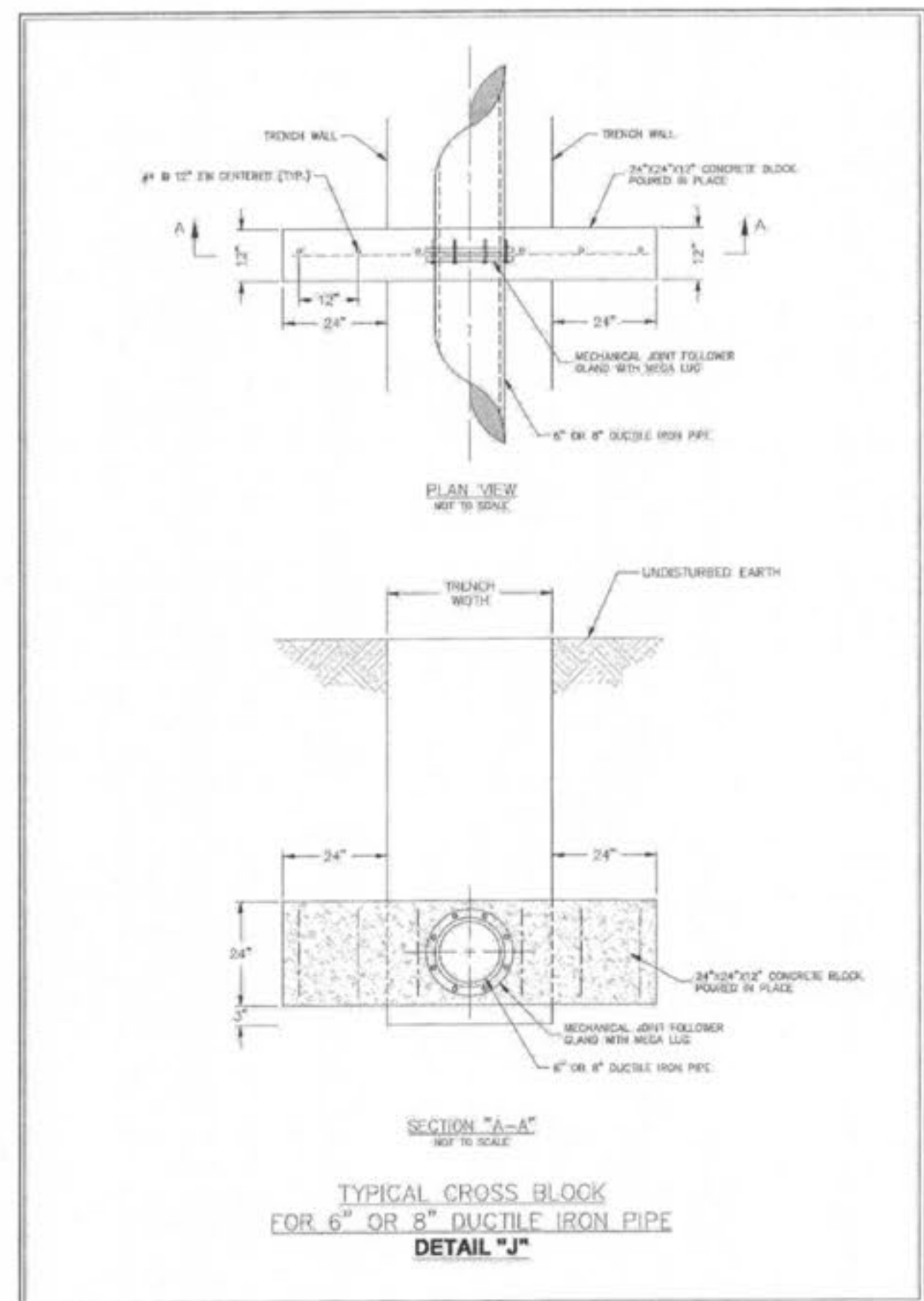
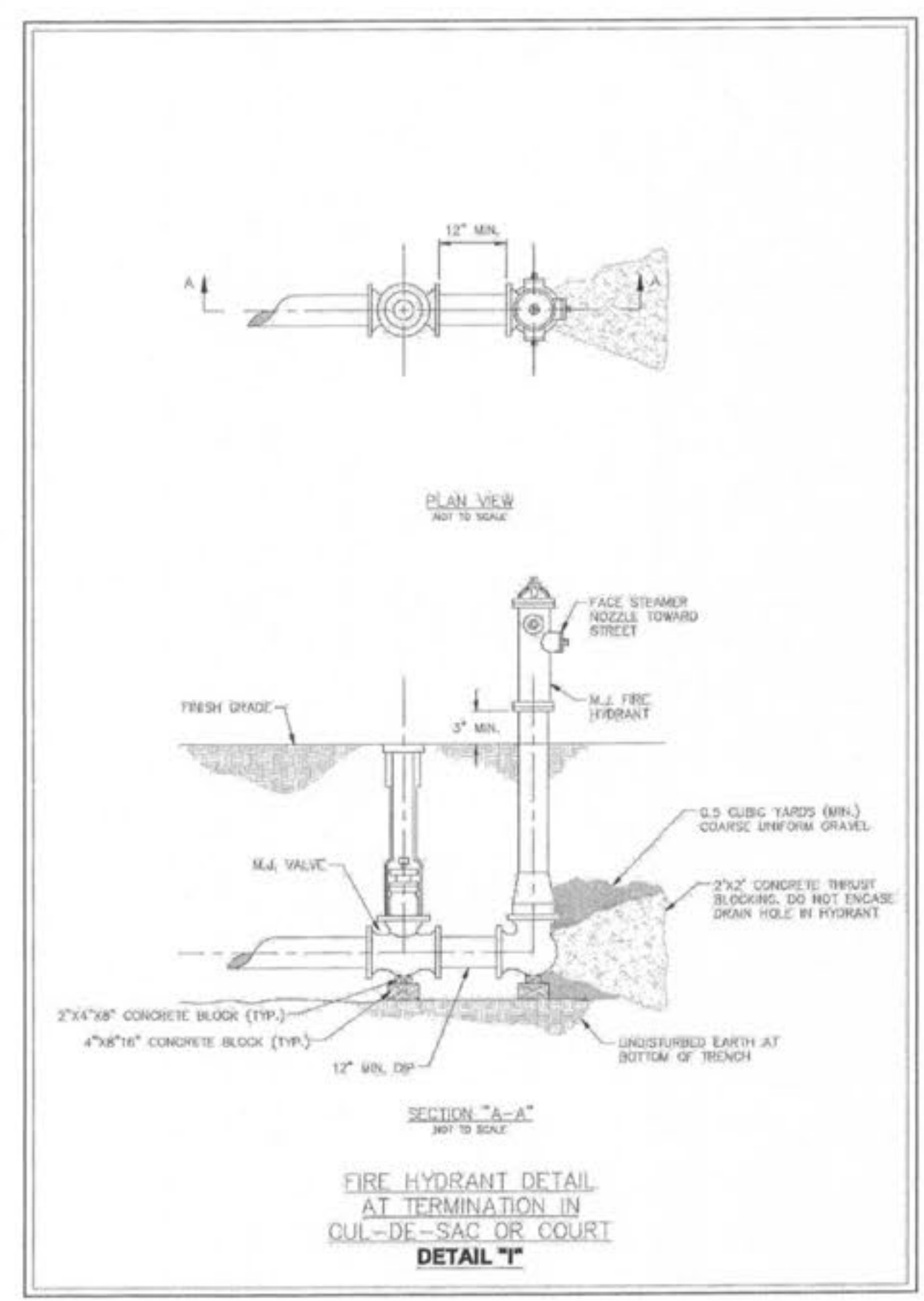
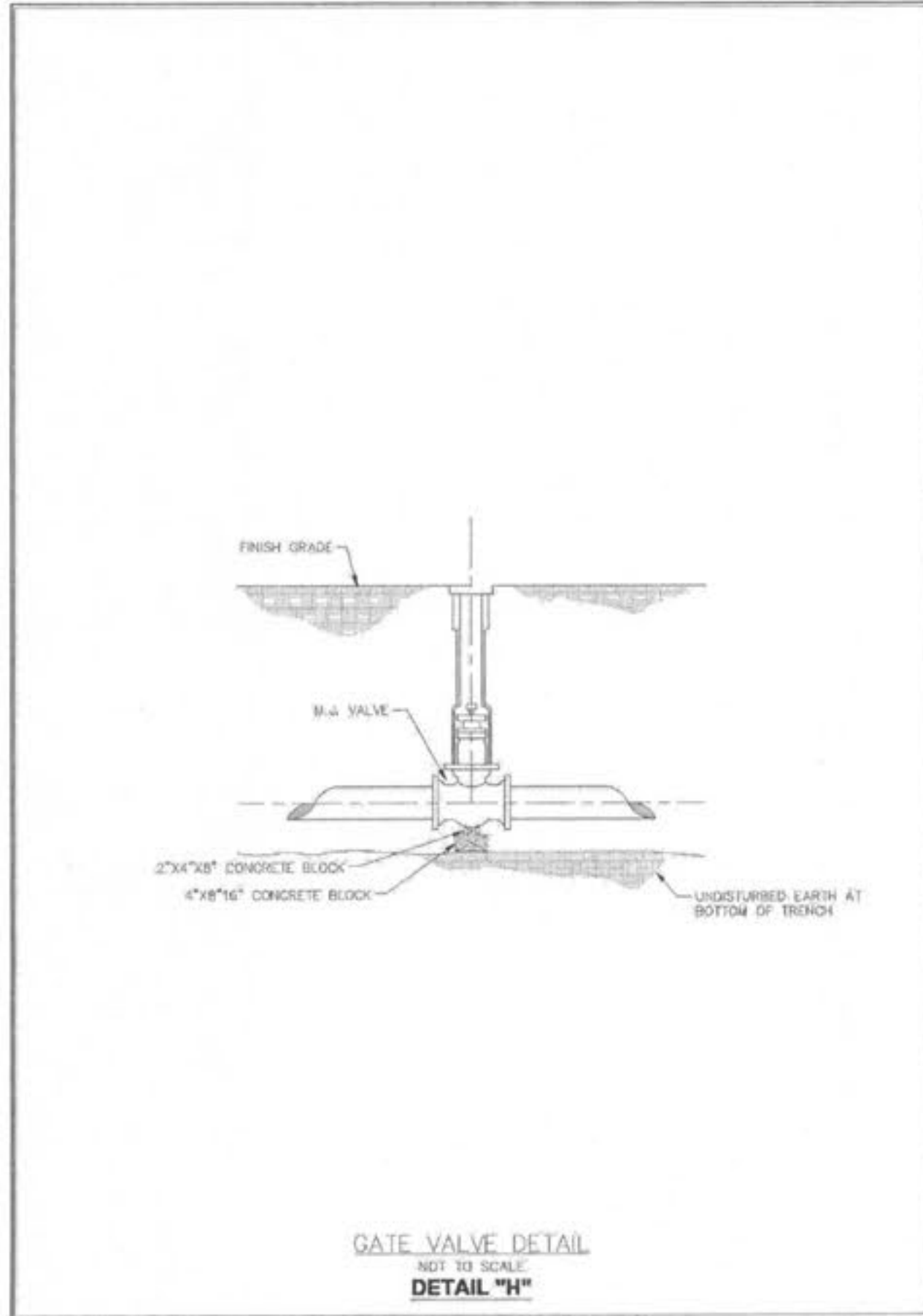
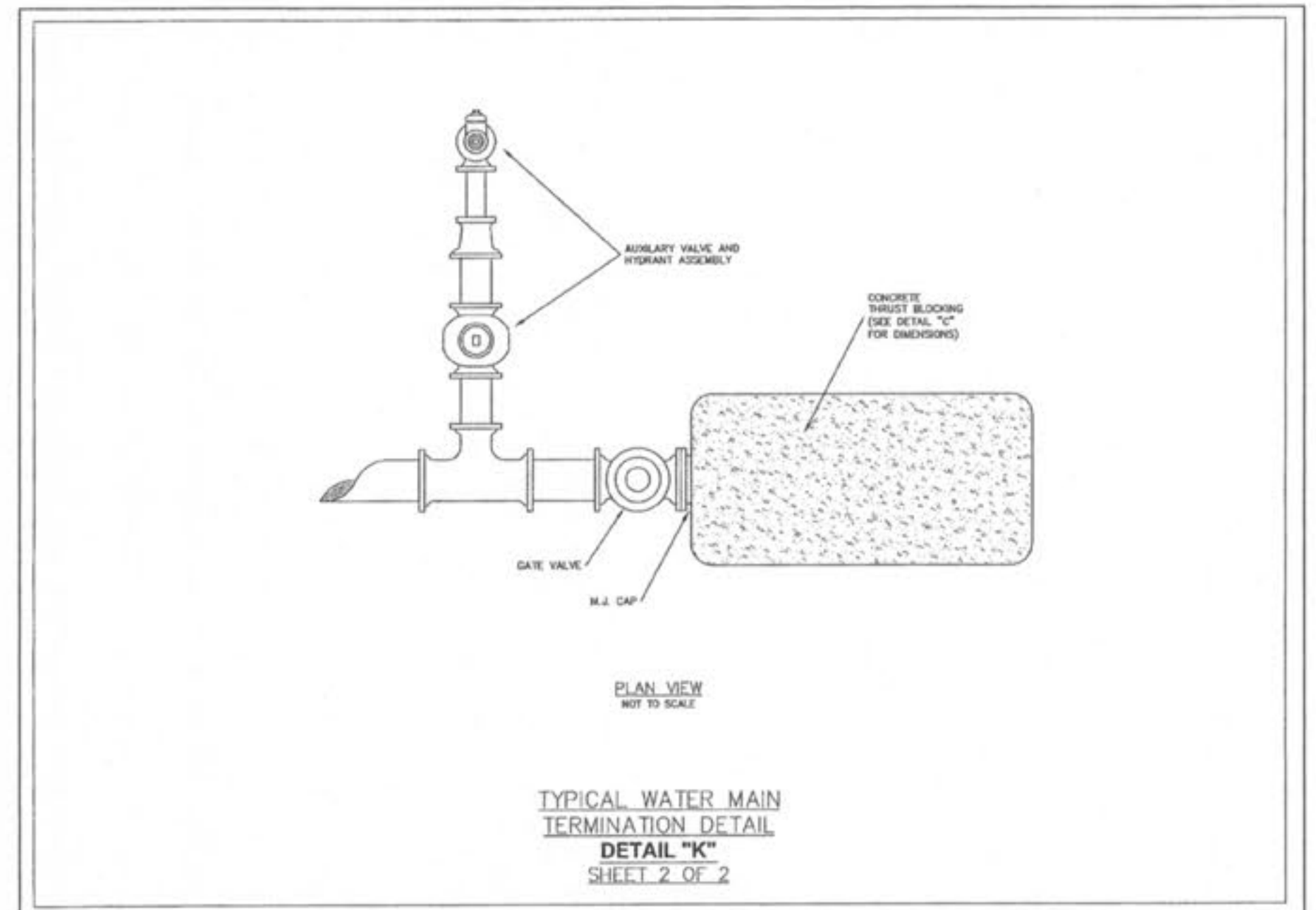
LAYOUT WATER DETAIL 10.11
 DATE: Apr 23, 2008 - 11:16am
 DRAWING: S:\055\0552007\07-0075\07-0075_Village Improvement Plans\0_Plan_C10.11_Details_07-075.dwg



PIPE SIZE DEGREE BEND

PIPE SIZE	DEGREE BEND	DOWN BENDS			UP BENDS		
		W	H	L	W	H	L
4"	11 1/4"	18	12	18	12	12	12
	22 1/2"	18	18	24	12	12	12
	45"	18	18	30	12	12	18
6"	11 1/4"	24	18	18	12	12	12
	22 1/2"	24	18	24	12	12	12
	45"	24	18	48	12	12	18
8"	11 1/4"	24	18	24	12	12	18
	22 1/2"	24	18	42	12	12	24
	45"	24	18	48	18	12	24
10"	11 1/4"	30	24	24	18	18	18
	22 1/2"	30	24	42	18	18	24
	45"	30	24	72	18	18	36
12"	11 1/4"	30	24	30	18	18	18
	22 1/2"	30	24	54	18	18	30
	45"	30	36	72	24	18	36

DIMENSIONS FOR VERTICAL BENDS
(IN INCHES)
DETAIL "D"
PAGE 2 of 2



PLANNING AND DEVELOPMENT DEPARTMENT FILE #9831.57 (AREA PLAN-APPROVED MAY 24TH, ORDINANCE #5178) - 9831.57.01 (FINAL PLAN)

DESIGNED BY: CJB
 DRAWN BY: KDK
 CHECKED BY: JFH
 DATE: 11/6/07
 Job Number: 07-075
 Sheet Number: C10.11

COLE and ASSOCIATES INCORPORATED
 10777 sunset office drive
 saint louis, missouri 63127
 p. 314 984 9887 f. 314 984 0587

PARK AVENUE VILLAGE IMPROVEMENT PLANS
 PHOENIX PARKWAY
 OFF FALLON, MO

WATER DETAILS

SEAL: [Professional Engineer Seal for Matthew B. Koester, No. 200705809, State of Missouri]

DEVELOPER/OWNER:
THE VILLAGE AT PARK PLACES, LLC.
 1001 BOARDWALK SPRINGS PL
 OFF FALLON, MO 63366
 PHONE: (636) 561-9323

REVISIONS

NO.	DATE	DESCRIPTION
1	02/13/2008	DESIGN
2	03/14/2008	CITY OF FALLON/PROJ. # 0050 COMMENTS
3	03/14/2008	CITY OF FALLON/PROJ. # 0050 COMMENTS
4	03/17/2008	CITY OF FALLON/PROJ. # 0050 COMMENTS
5	03/17/2008	CITY OF FALLON/PROJ. # 0050 COMMENTS

THE PROFESSIONAL ENGINEER'S SIGNATURE AND PERSONAL SEAL APPEAR HEREIN. ASSUMES RESPONSIBILITY ONLY FOR WHAT APPEARS ON THIS PAGE AND DOES NOT ASSUME RESPONSIBILITY FOR THE ACCURACY OF THE INFORMATION PROVIDED IN THE SPECIFICATIONS, ESTIMATES, REPORTS, OR OTHER DOCUMENTS OR INSTRUMENTS NOT BEING PART OF THIS CONTRACT. THE PROFESSIONAL ENGINEER'S SEAL IS REQUIRED TO BE USED FOR ALL PARTS OF THIS PROJECT TO WHICH THIS PAGE APPLIES.