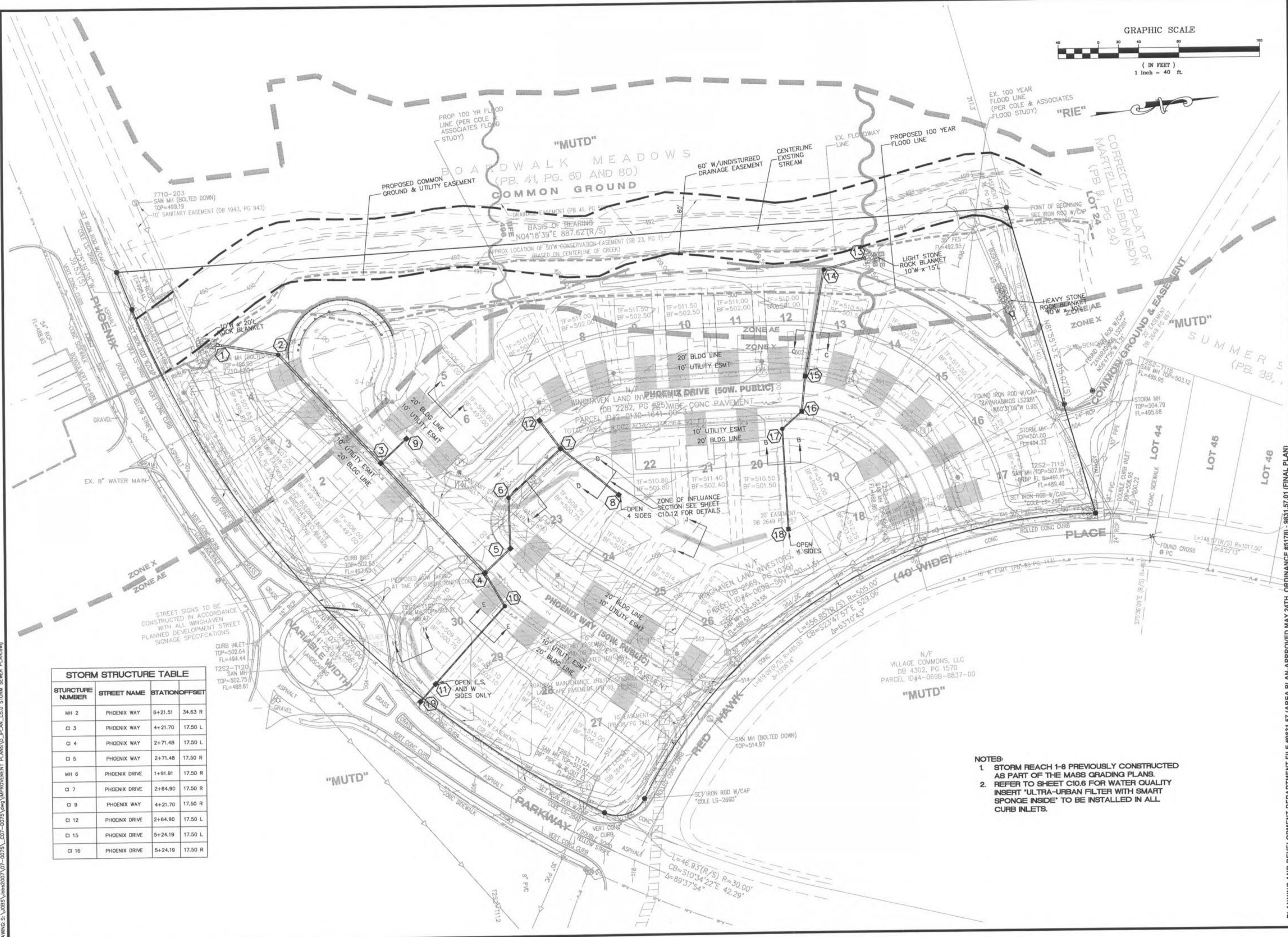
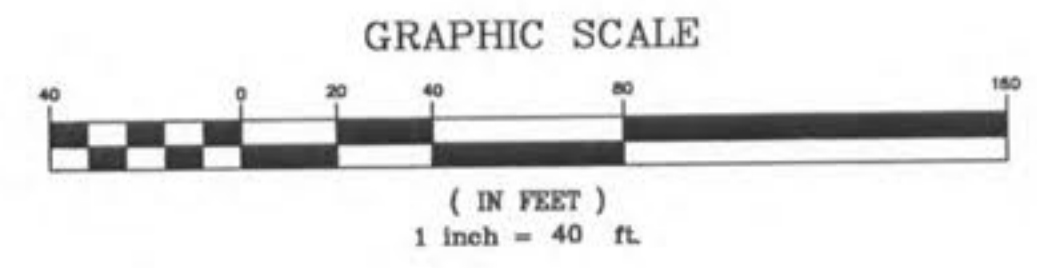


LAYOUT: C5.0, 2008 - 11:01am
DRAWING: S:\2008\2007\07-0079\CO7-0075\403\IMPROVEMENT PLANS\0_PLAN_C5.0 STORM SEWER PLAN.dwg



STORM STRUCTURE TABLE

| STRUCTURE NUMBER | STREET NAME | STATION | OFFSET | SET |
|------------------|---------------|---------|--------|-----|
| MH 2 | PHOENIX WAY | 6+21.51 | 34.63 | R |
| CI 3 | PHOENIX WAY | 4+21.70 | 17.50 | L |
| CI 4 | PHOENIX WAY | 2+71.48 | 17.50 | L |
| CI 5 | PHOENIX WAY | 2+71.48 | 17.50 | R |
| MH 6 | PHOENIX DRIVE | 1+91.91 | 17.50 | R |
| CI 7 | PHOENIX DRIVE | 2+64.90 | 17.50 | R |
| CI 9 | PHOENIX WAY | 4+21.70 | 17.50 | R |
| CI 12 | PHOENIX DRIVE | 2+64.90 | 17.50 | L |
| CI 15 | PHOENIX DRIVE | 5+24.19 | 17.50 | L |
| CI 16 | PHOENIX DRIVE | 5+24.19 | 17.50 | R |

NOTES:
 1. STORM REACH 1-8 PREVIOUSLY CONSTRUCTED AS PART OF THE MASS GRADING PLANS.
 2. REFER TO SHEET C10.6 FOR WATER QUALITY INSERT 'ULTRA-URBAN FILTER WITH SMART SPONGE INSIDE' TO BE INSTALLED IN ALL CURB INLETS.

PLANNING AND DEVELOPMENT DEPARTMENT FILE #9831.57 (AREA PLAN-APPROVED MAY 24TH, ORDINANCE #5178) - 9831.57.01 (FINAL PLAN)

DESIGNED BY CJB
DRAWN BY KDK
CHECKED BY JFH
DATE 11/6/07
Job Number 07-075
Sheet Number C5.0

REVISIONS

| NO. | DATE | DESCRIPTION |
|-----|----------|-----------------------------------|
| 1 | 07/17/08 | CITY OF OTTAWA/PLNS/PLNS COMMENTS |
| 2 | 07/17/08 | CITY OF OTTAWA/PLNS/PLNS COMMENTS |
| 3 | 07/17/08 | CITY OF OTTAWA/PLNS/PLNS COMMENTS |

DEVELOPER/OWNER:
 THE VILLAGE AT PARK PLACE, LLC.
 1001 BOARDWALK SPRINGS PL.
 OFALLON, MO 63366
 PHONE: (636) 561-9323

PROFESSIONAL SEAL:
 THE PROFESSIONAL ENGINEER'S SEAL APPEAR HEREON ASSUMES RESPONSIBILITY ONLY FOR WHAT APPEARS ON THIS PLAN, AND DOES NOT ASSUME RESPONSIBILITY FOR THE ACCURACY OF THE INFORMATION PROVIDED TO THE ENGINEER. ESTIMATES, REPORTS, OR OTHER DOCUMENTS OF INSTRUMENTS NOT SEALED BY THE ENGINEERING PROFESSIONAL INCLUDING THIS ONE, ARE NOT TO BE USED FOR ANY PART OF THE PROJECT, IN WHOLE OR IN PART.

STORM SEWER PLAN