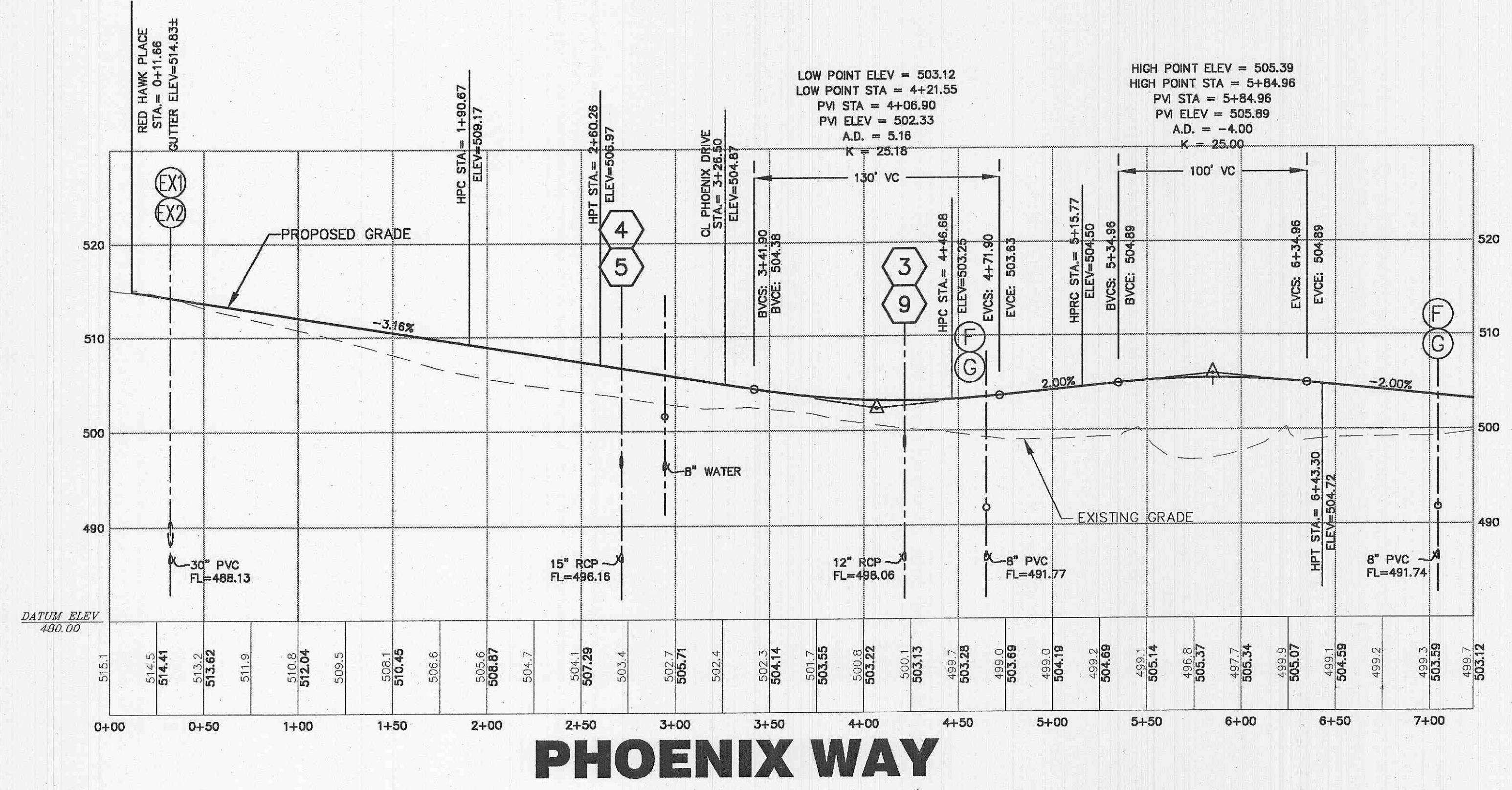
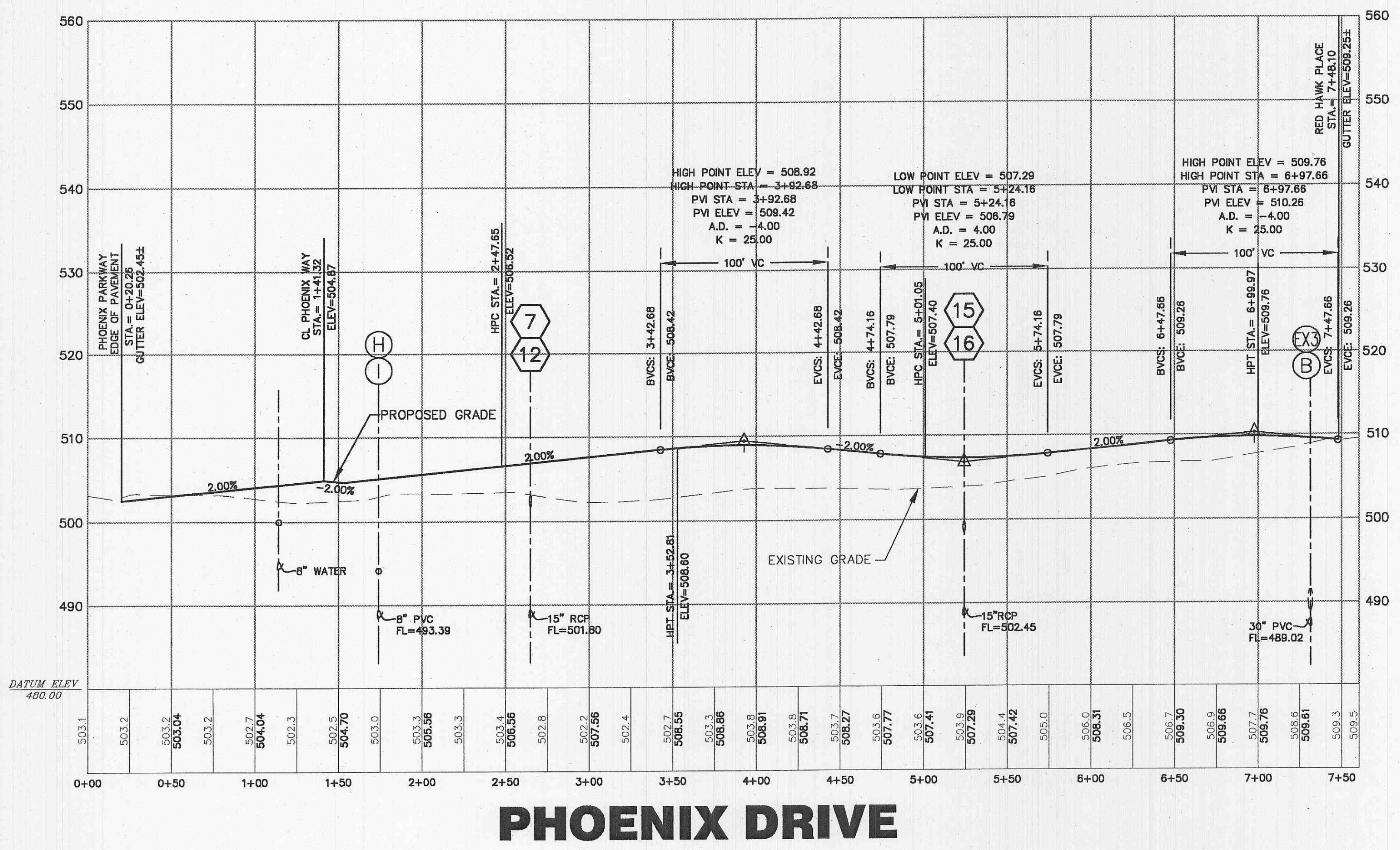


LAYOUT: C6.0  
 DATE: Apr 25, 2008 - 11:03am  
 DRAWING: S:\085\0852007\07-0075\07-0075\07-0075.dwg IMPROVEMENT PLANS\0\_JPLAN\_C6.0 STREET PROFILES.dwg

NOTE:  
 PAVEMENT WITHIN PHOENIX PARKWAY AND RED HAWK PLACE  
 PLACE RIGHT-OF-WAYS SHALL MATCH THE THICKNESS AND  
 COMPOSITION OF THE EXISTING PAVEMENT.



SCALE:  
 1" = 50' HORIZ.  
 1" = 10' VERT.

PLANNING AND DEVELOPMENT DEPARTMENT FILE #9831.57 (AREA PLAN-APPROVED MAY 24TH, ORDINANCE #9178) - 9831.57.01 (FINAL PLAN)

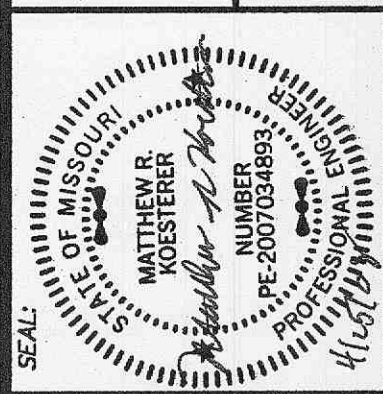
planning • engineering • surveying • landscape architecture

**COLE** and ASSOCIATES INCORPORATED

10777 sunset office drive  
 saint louis, missouri 63127  
 p. 314.984.9887 f. 314.984.0587

DESIGNED BY	CJB
DRAWN BY	KDK
CHECKED BY	JFH
DATE	11/6/07
Job Number	07-075
Sheet Number	C6.0

DEVELOPER/OWNER:  
**THE VILLAGE AT PARK PLACE, LLC.**  
 1001 BOARDWALK SPRINGS PL  
 OFALLON, MO 63366  
 PHONE: (636) 561-9323



DATE	REVISIONS
02/13/2008	DESIGN
03/14/2008	CITY OF OFALLON/PROJ. #2/JCSH COMMENTS
03/14/2008	CITY OF OFALLON/PROJ. #2/JCSH COMMENTS
03/14/2008	CITY OF OFALLON/PROJ. #2/JCSH COMMENTS
03/14/2008	CITY OF OFALLON/PROJ. #2/JCSH COMMENTS
03/14/2008	CITY OF OFALLON/PROJ. #2/JCSH COMMENTS

STREET PROFILES