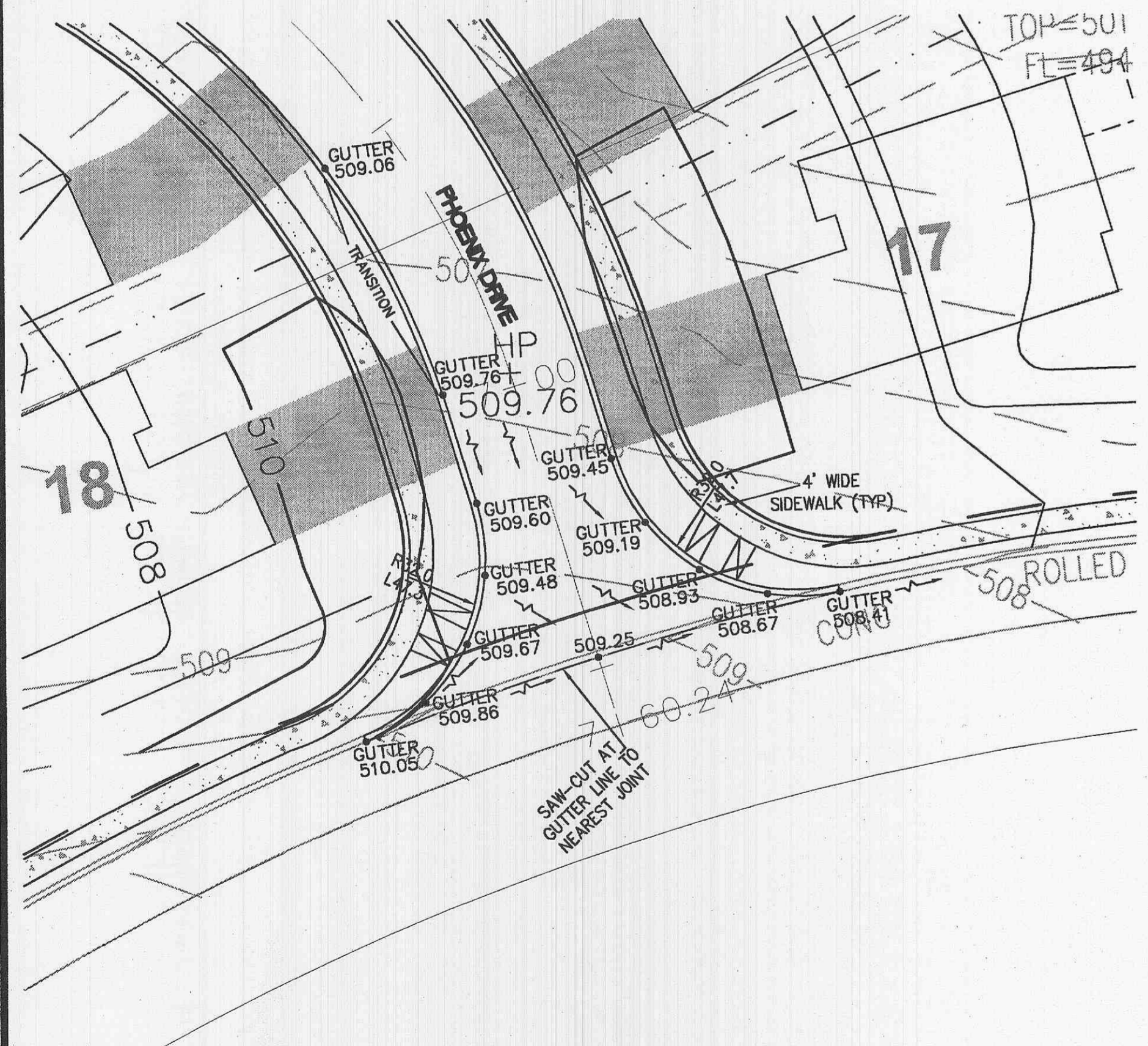
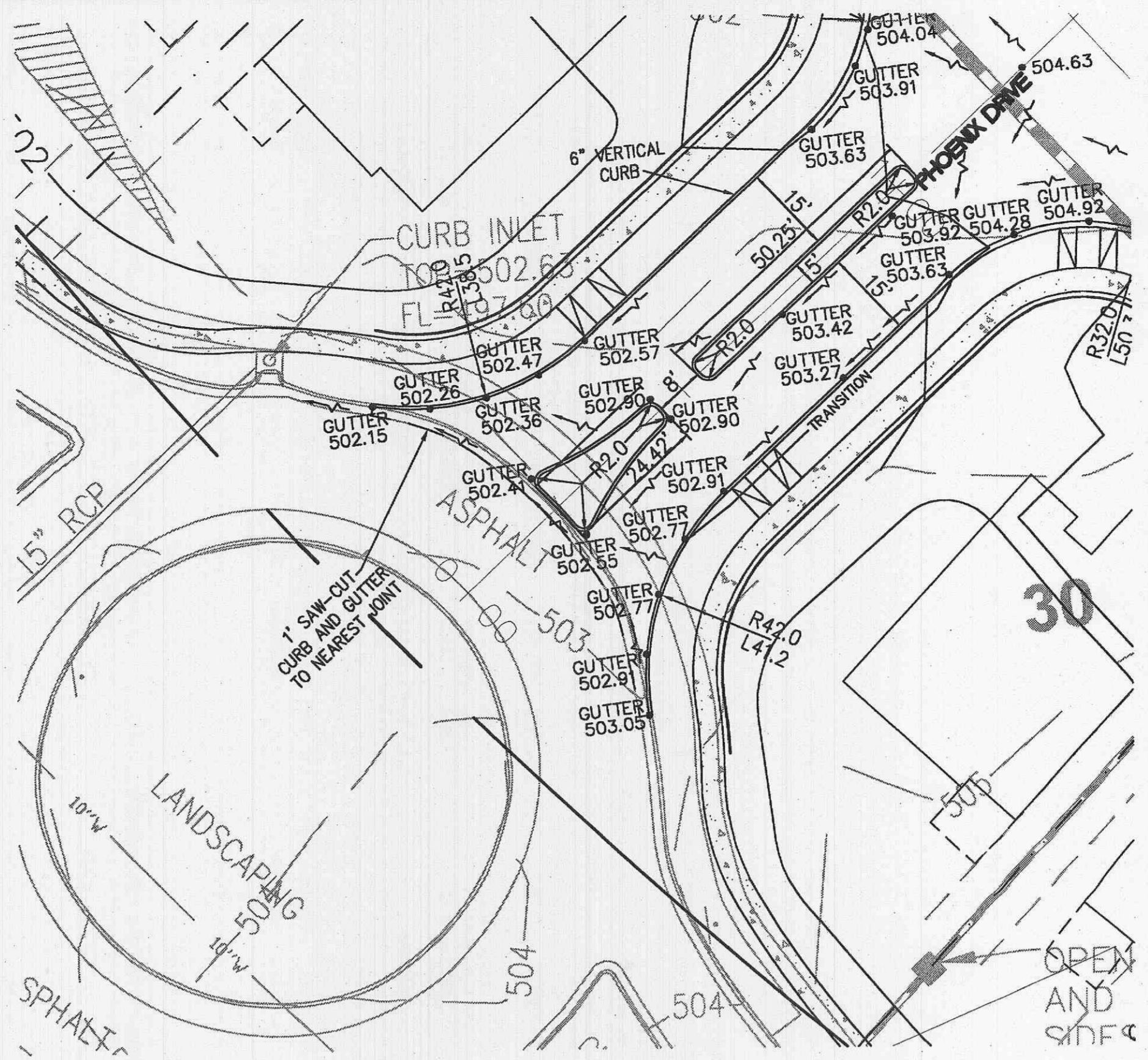


PHOENIX WAY CUL-DE-SAC

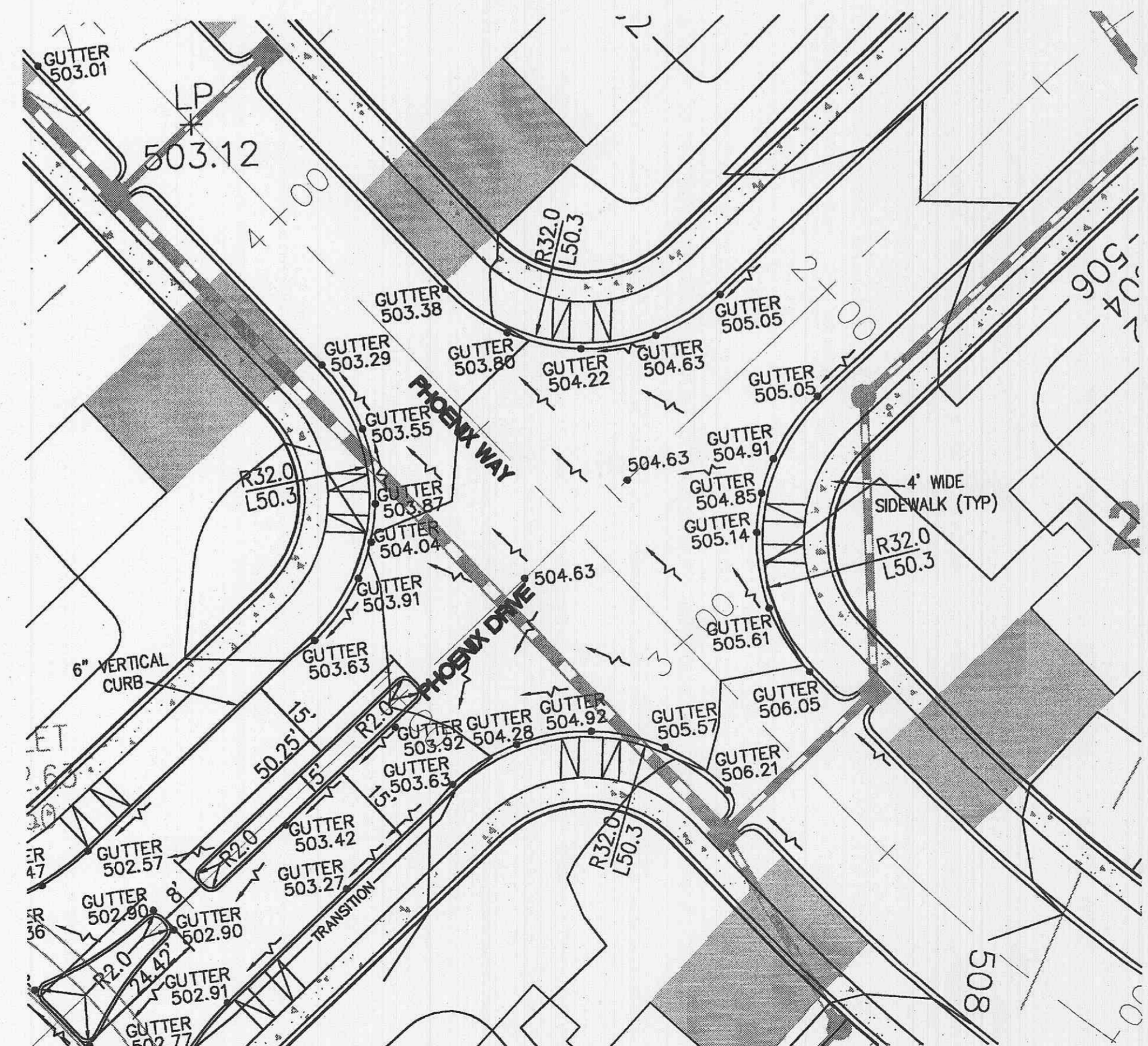


INTERSECTION OF PHOENIX DRIVE AND RED HAWK PLACE

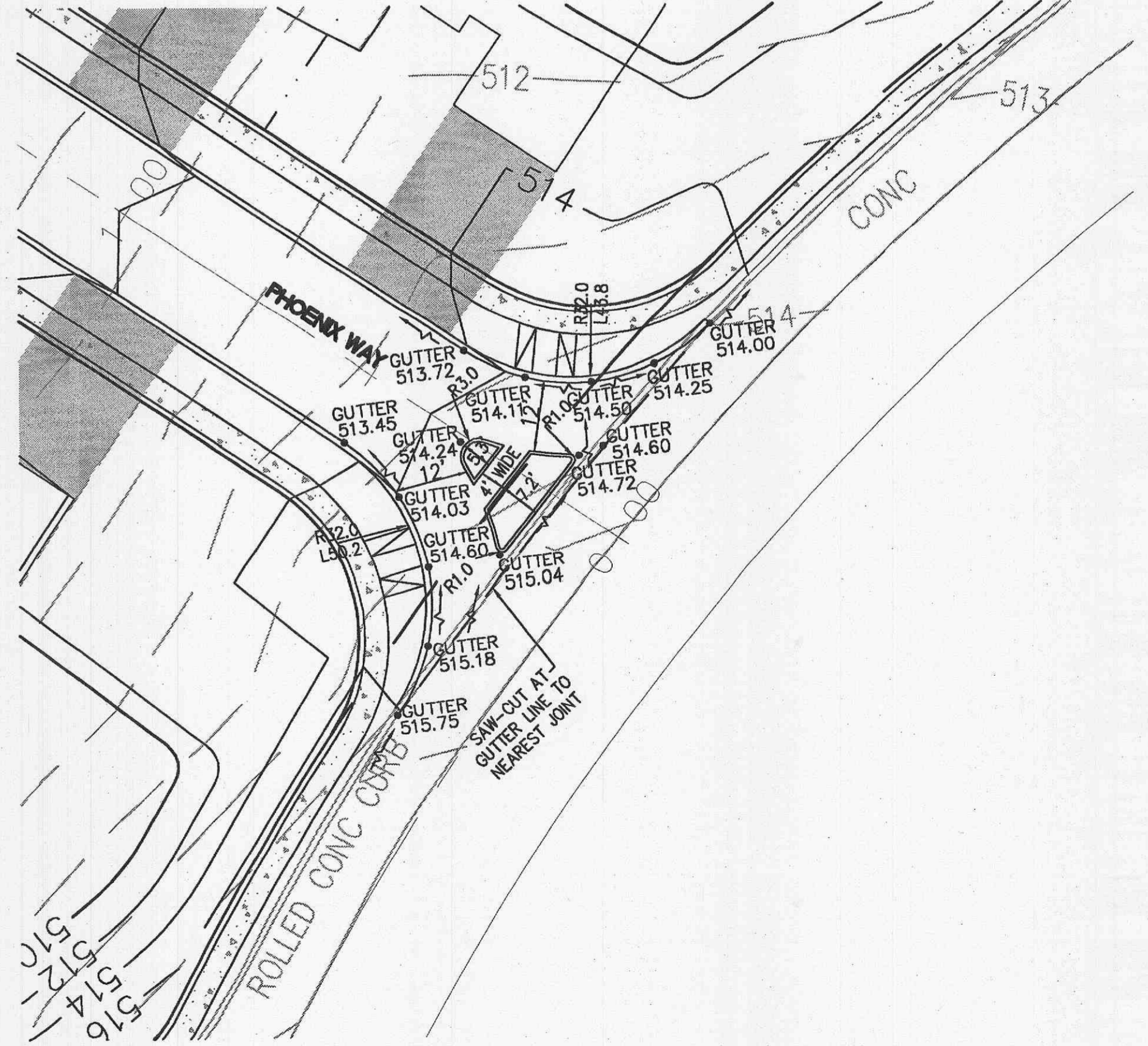
- NOTES:
- PAVEMENT WITHIN PHOENIX PARKWAY AND RED HAWK PLACE RIGHT-OF-WAYS SHALL MATCH THE THICKNESS AND COMPOSITION OF EXISTING PAVEMENT.
 - THE CUL-DU-SAC PORTION OF PHOENIX WAY WILL BE HAND POURED TO OBTAIN PROPER DRAINAGE.



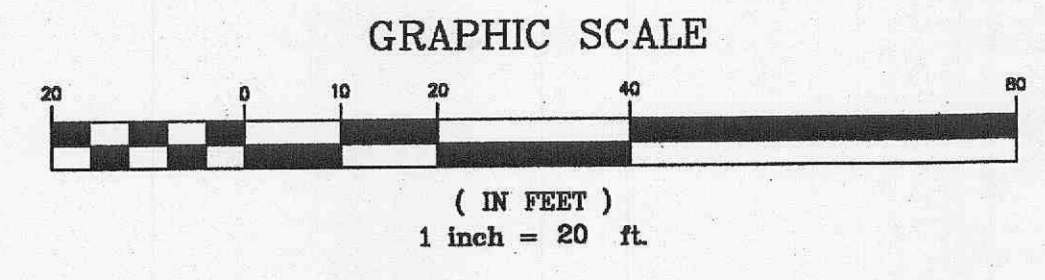
INTERSECTION OF PHOENIX DRIVE AND PHOENIX PARKWAY



INTERSECTION OF PHOENIX DRIVE AND PHOENIX WAY



INTERSECTION OF PHOENIX WAY AND RED HAWK PLACE



LAYOUT: C7.0
DATE: Apr 25, 2008 - 11:04am
DRAWING: S:\0805\08052007\07-075\07-075.dwg

REVISIONS NO. DATE BY DESCRIPTION 1 07/17/2008 JH CITY OF FALLON/PHSD #2/050 COMMENTS 2 07/17/2008 JH CITY OF FALLON/PHSD #2/050 COMMENTS 3 07/17/2008 JH CITY OF FALLON/PHSD #2/050 COMMENTS 4 07/17/2008 JH CITY OF FALLON/PHSD #2/050 COMMENTS	DEVELOPER/OWNER: THE VILLAGE AT PARK PLACE, LLC. 1001 BOARDWALK SPRINGS PL OF FALLON, MO 63366 PHONE: (636) 561-9323	SEAL: 	PLANNING AND DEVELOPMENT DEPARTMENT FILE #9831.57 (AREA PLAN-APPROVED MAY 24TH, ORDINANCE #5178) - 9831.57.01 (FINAL PLAN) PARK AVENUE VILLAGE IMPROVEMENT PLANS PHOENIX PARKWAY OF FALLON, MO WARPIING DETAILS
Gole and Associates INCORPORATED planning • engineering • surveying • landscape architecture 10777 sunset office drive saint louis, missouri 63127 p. 314.984.9887 f. 314.984.0587		DESIGNED BY: CJB DRAWN BY: KDK CHECKED BY: JFH DATE: 11/6/07 Job Number: 07-075 Sheet Number: C7.0	