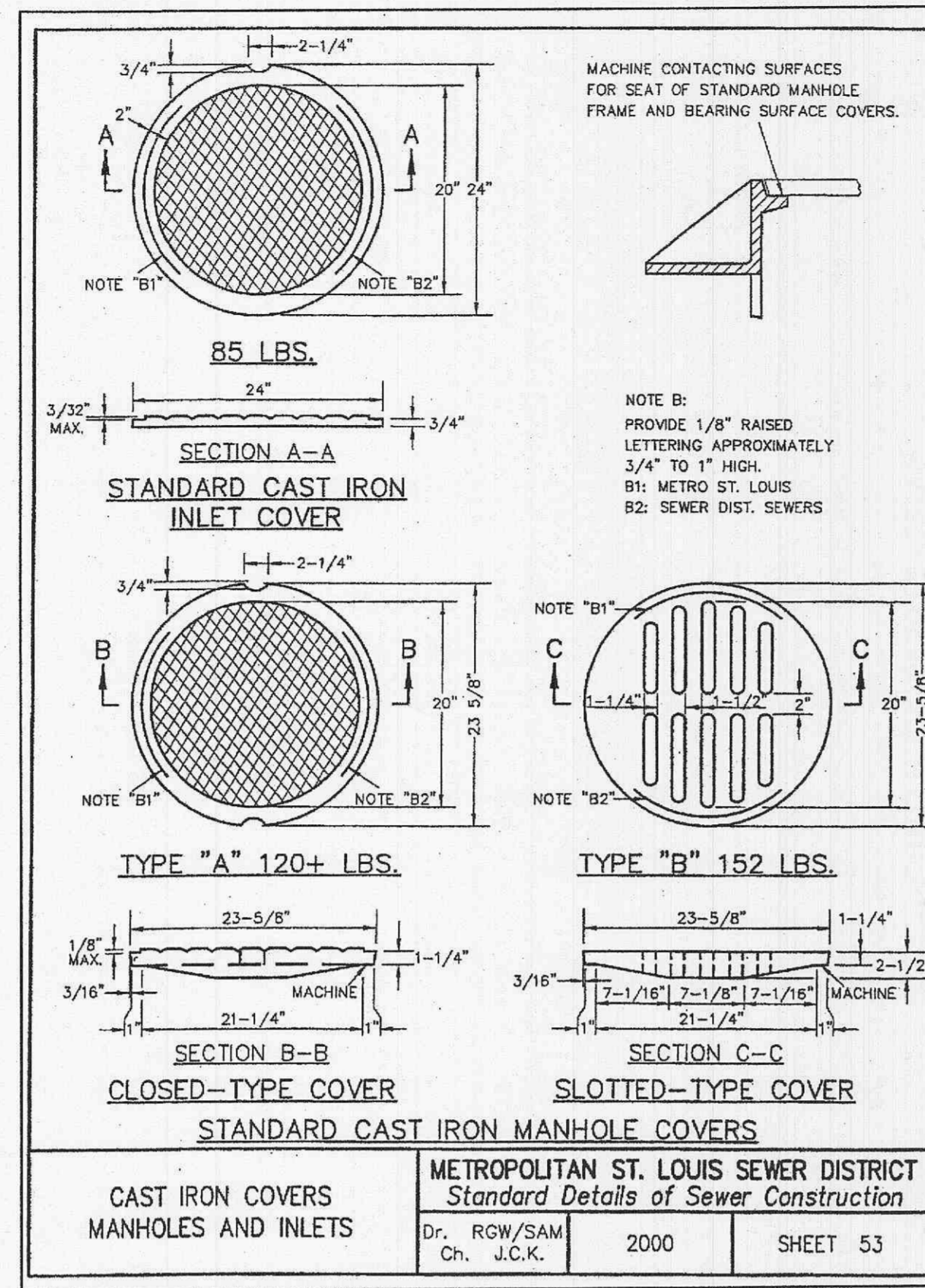
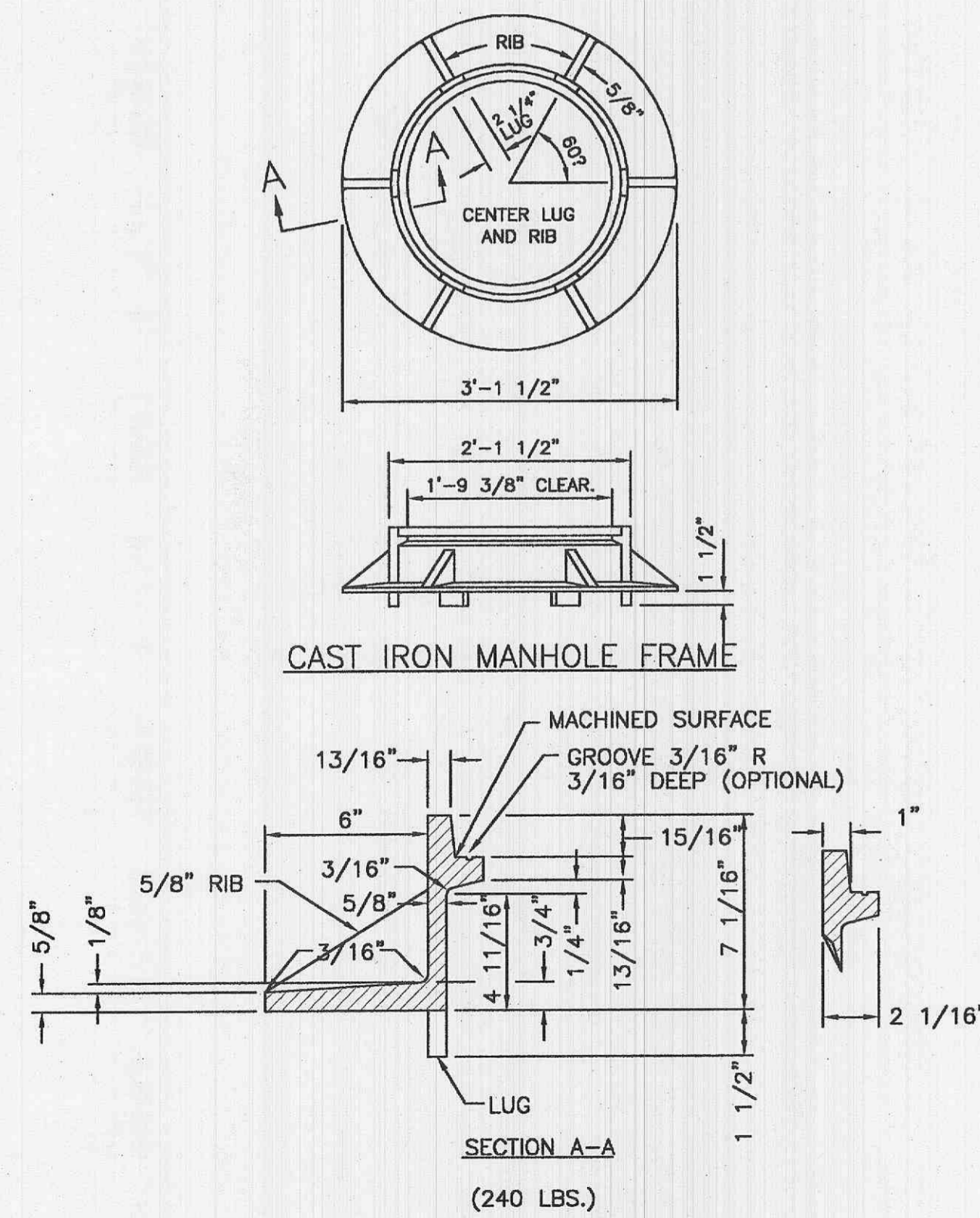


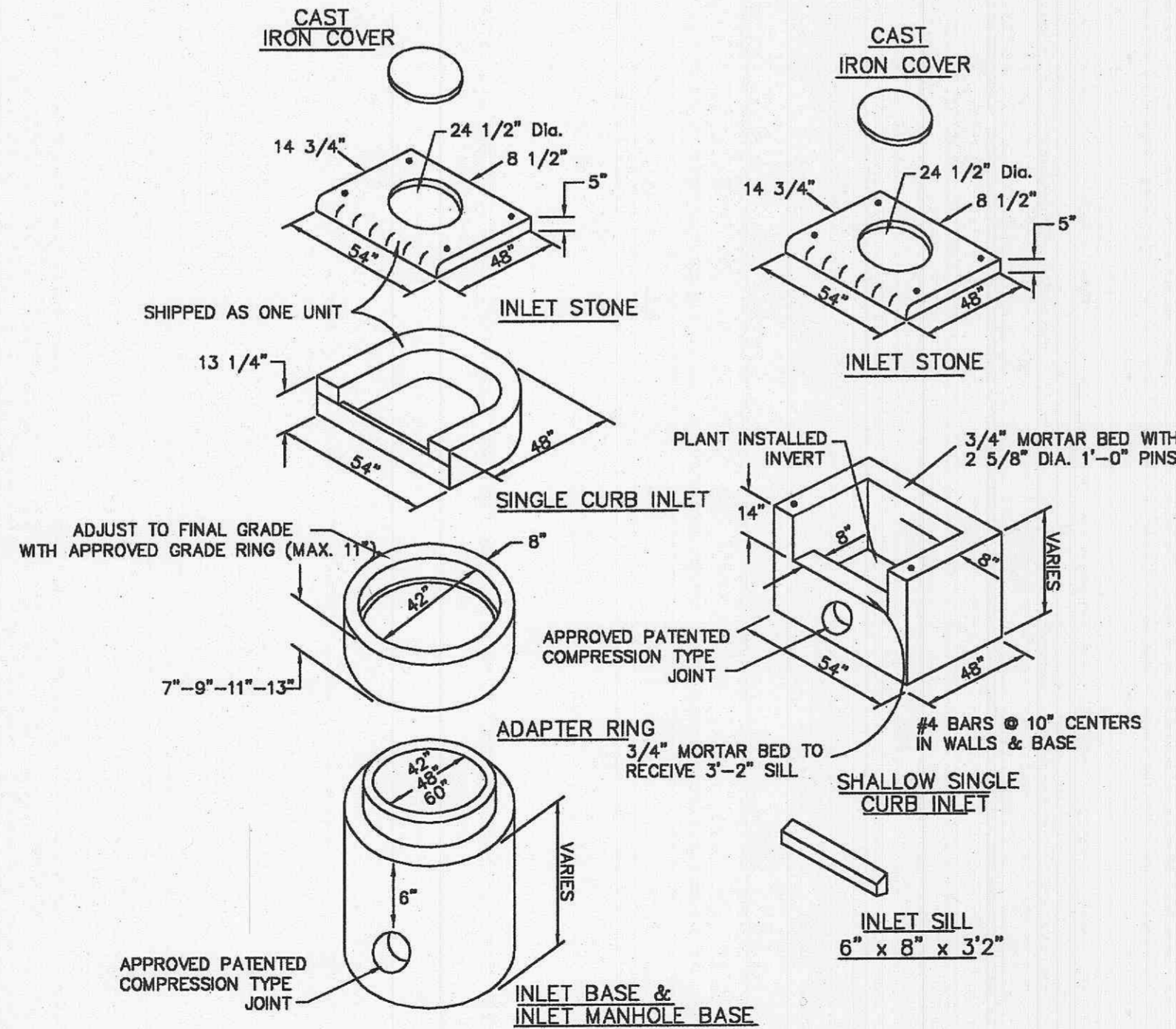
**1 PIPE BEDDING CLASS "C" DETAIL**  
SCALE: N.T.S.



CAST IRON COVERS  
MANHOLES AND INLETS  
METROPOLITAN ST. LOUIS SEWER DISTRICT  
Standard Details of Sewer Construction  
Dr. RGW/SAM  
Ch. J.C.K. 2000 SHEET 53

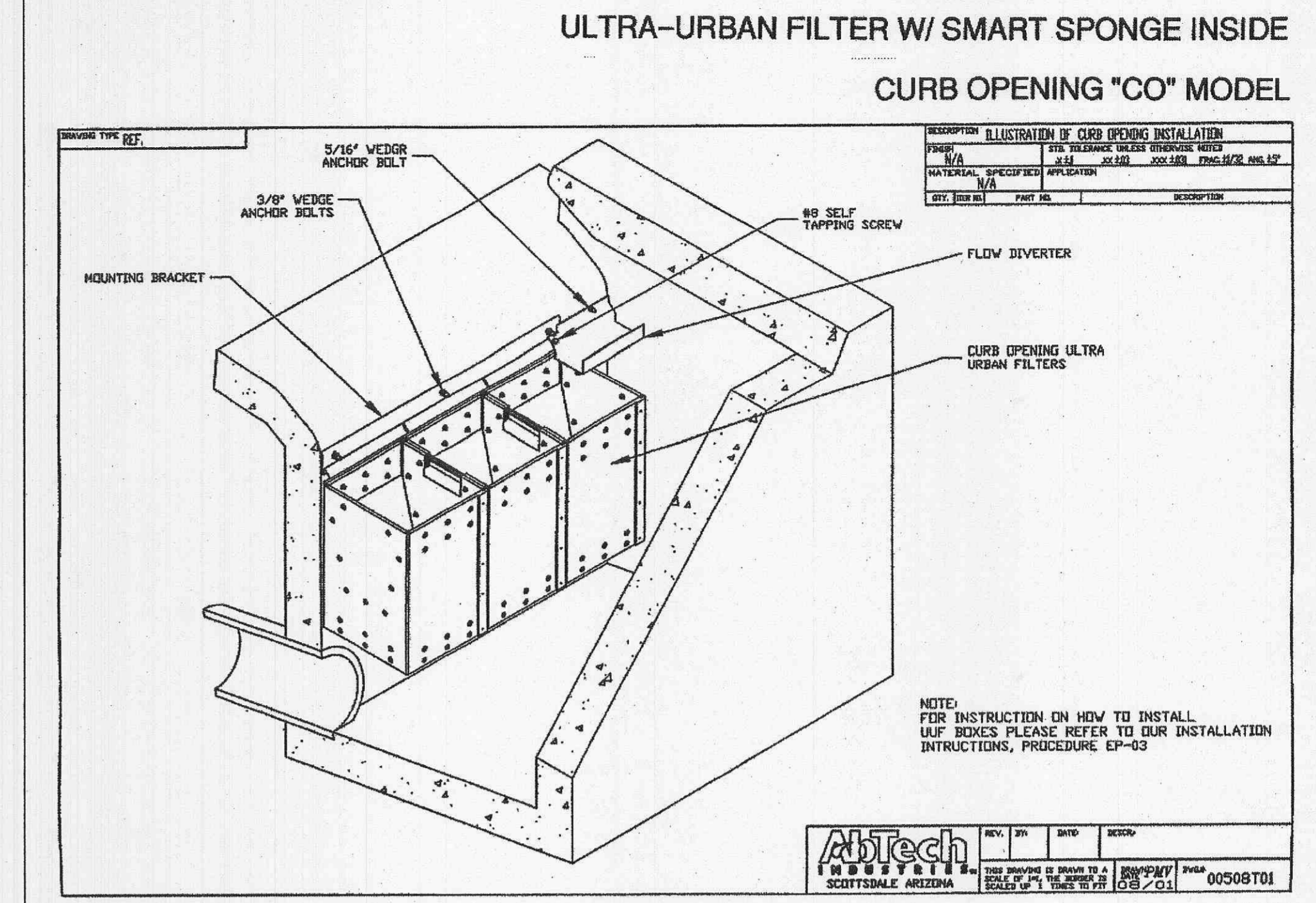


**3 CAST IRON MANHOLE FRAME DETAIL**  
SCALE: N.T.S.

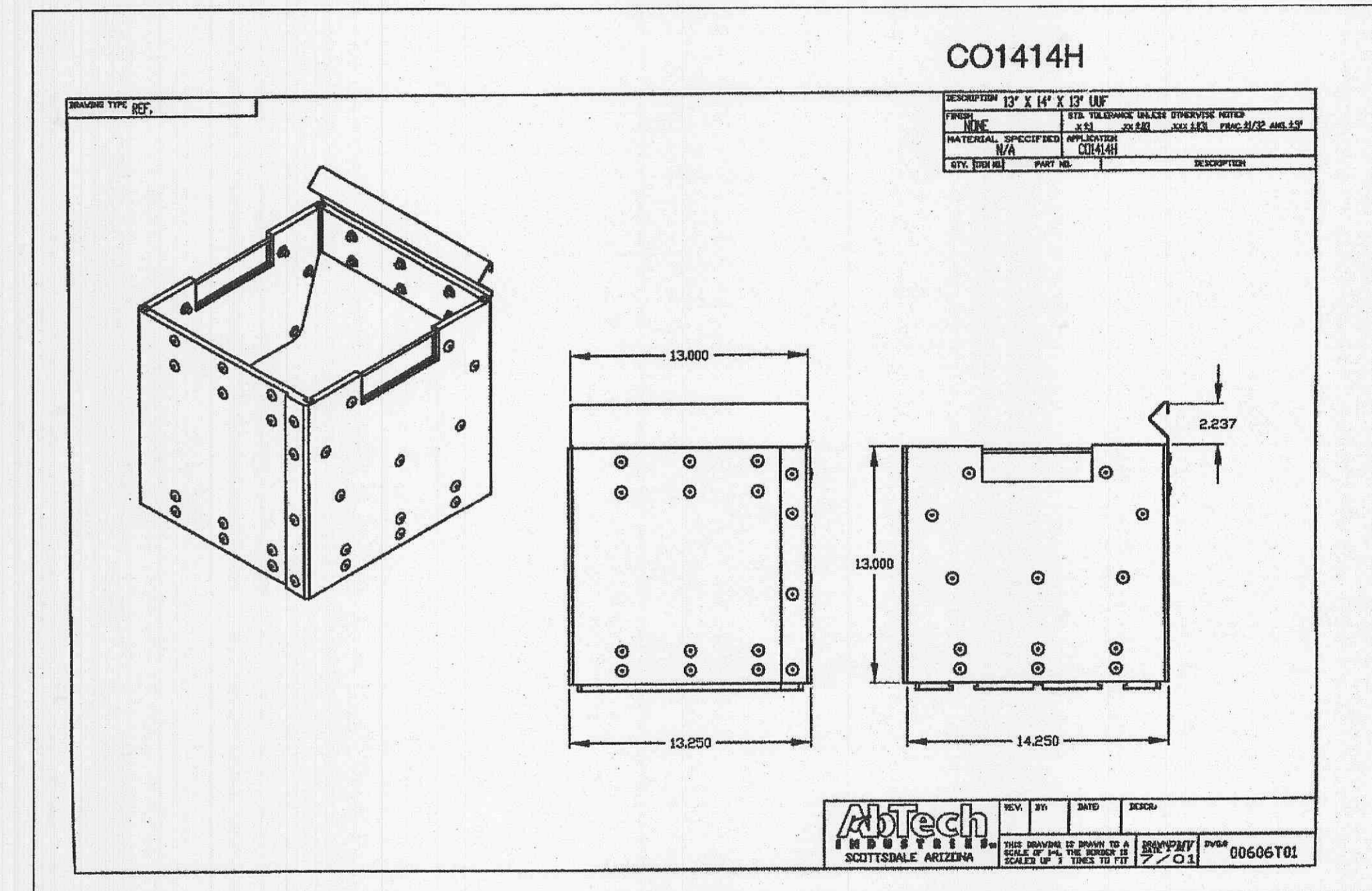


**7 SINGLE STREET INLET DETAIL**  
SCALE: N.T.S. REF. DWG.

NOTE: BRICK SHALL NOT BE USED IN THE CONSTRUCTION OF STORM SEWER STRUCTURES. PRECAST CONCRETE STRUCTURES ARE TO BE USED UNLESS OTHERWISE APPROVED BY THE CITY.



Abtech  
REV. 01 01/08  
DATE 01/08  
SCALE: 1/4" = 1'-0"



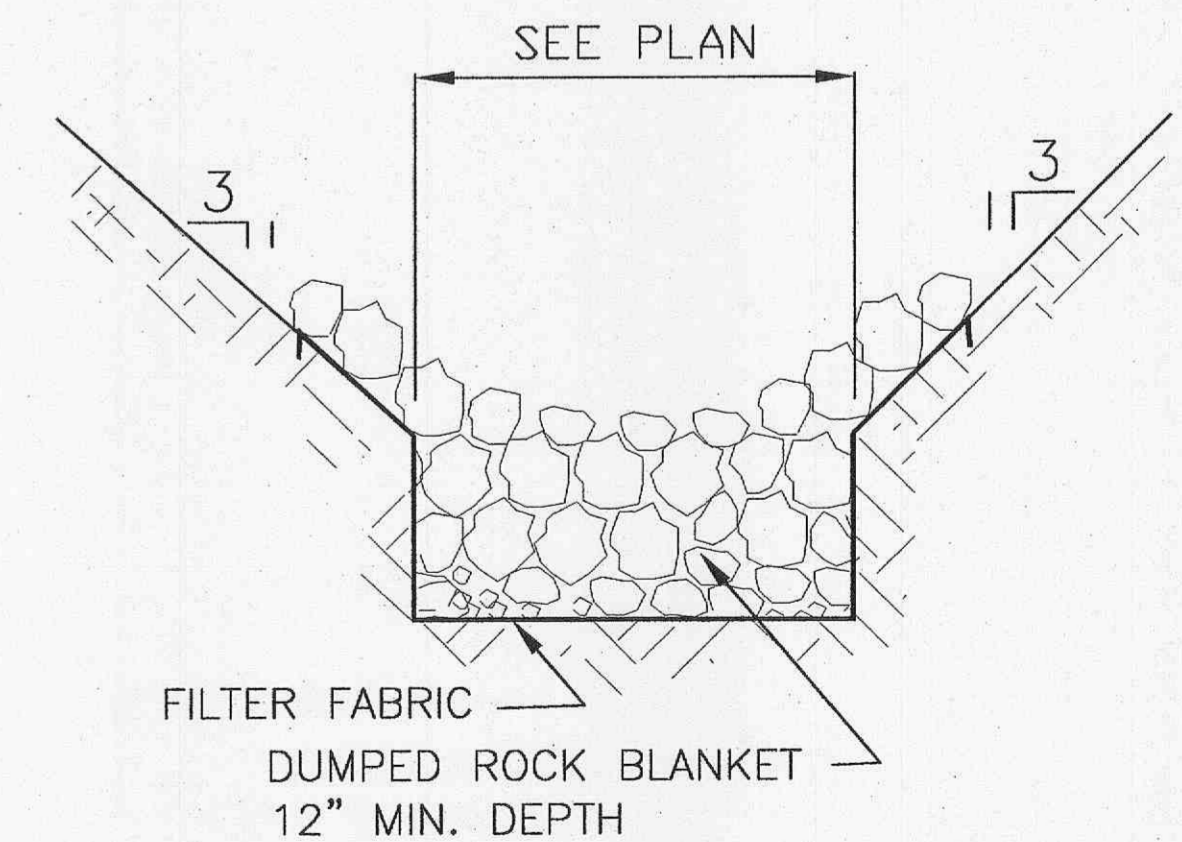
Abtech  
REV. 01 01/08  
DATE 01/08  
SCALE: 1/4" = 1'-0"

**PRECAST CONCRETE STORMWATER STRUCTURES**

MINIMUM DISTANCE FLOWLINE TO TOP OF STONE OR GRATE

PIPE I.D. NOMINAL INCHES	AREA INLET CIRCULAR BASE DIA.			(2) GRATE INLET CIRCULAR BASE DIA. SQUARE (MAX.)			SINGLE STREET INLET CIRCULAR BASE DIA. RECTANGLE (MAX.)		
	42"	48"	60"	42"	48"	60"	42"	48"	60"
12"	45"			38"	48"	60"	31"	48"	61"
15"	48"			41"			34"	51"	64"
18"	52"			44"			37"	55"	68"
21"	55"			47"			40"	58"	71"
24"		58"			51"		44"	61"	74"
27"			78"			71"	NA		81"
30"						74"	NA		85"
33"						77"	NA		88"

- NOTES:
- 48" DIAMETER BASE REQUIRES 7" HIGH TRANSITION SECTION TO 42" DIAMETER, SIMILAR TO "ADAPTER RING" SHEET 35.
  - 60" DIAMETER BASE REQUIRES 24" HIGH CONCENTRIC REDUCER TRANSITION TO 42" DIAMETER, SIMILAR TO "ADAPTER RING" SHEET 35.
  - STANDARD DEPTH = 3\* PIPE DIAMETER.



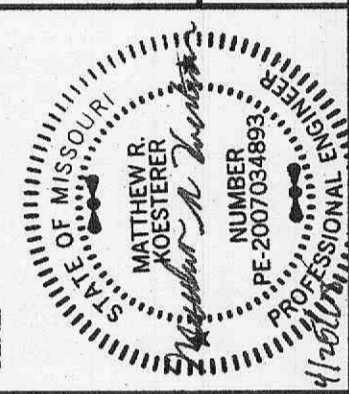
NOTE: DUMPED ROCK BLANKET TO BE A MIN. 12" DIA. QUARRY RUN STONE.

**4 ROCK BLANKET DETAIL**  
SCALE: N.T.S. REF. DWG.

REVISIONS

DATE	DESCRIPTION
07/17/2008	REVISED PER COMMENTS
08/11/2008	REVISED PER COMMENTS
08/11/2008	REVISED PER COMMENTS
08/11/2008	REVISED PER COMMENTS

DEVELOPER/OWNER:  
**THE VILLAGE AT PARK PLACE, LLC.**  
1001 O'FALLON, MO 63366  
PHONE: (636) 561-9923



PLANNING AND DEVELOPMENT DEPARTMENT FILE #9831.57 (AREA PLAN-APPROVED MAY 24TH, ORDINANCE #5178) - 9831.57.01 (FINAL PLAN)  
**PARK AVENUE VILLAGE IMPROVEMENT PLANS**  
PHOENIX PARKWAY  
O'FALLON, MO

planning • engineering • surveying • landscape architecture  
**Cole and Associates INCORPORATED**  
10777 sunset office drive  
saint louis, missouri 63127  
p. 314 964 9887 f. 314 964 0587

DESIGNED BY: CJB  
DRAWN BY: KDK  
CHECKED BY: JFH  
DATE: 11/6/07

Job Number: **07-075**  
Sheet Number: **C10.6**

LAYOUT: STORM 10.6  
DATE: Apr 25, 2008  
DRAWING: S:\DOBS\ubob2007\07-0075\07-0075\07-0075\07-0075\07-0075.dwg