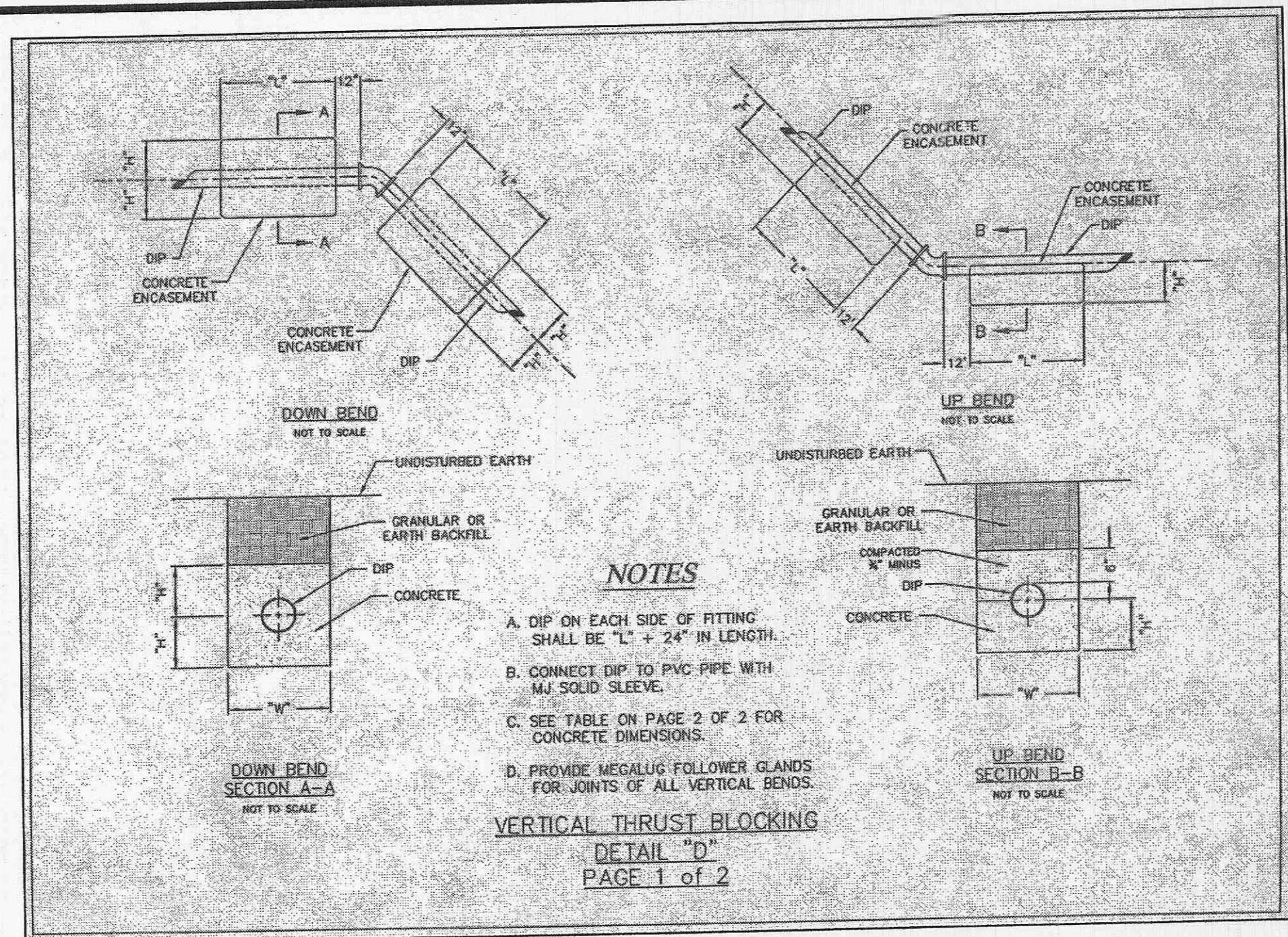
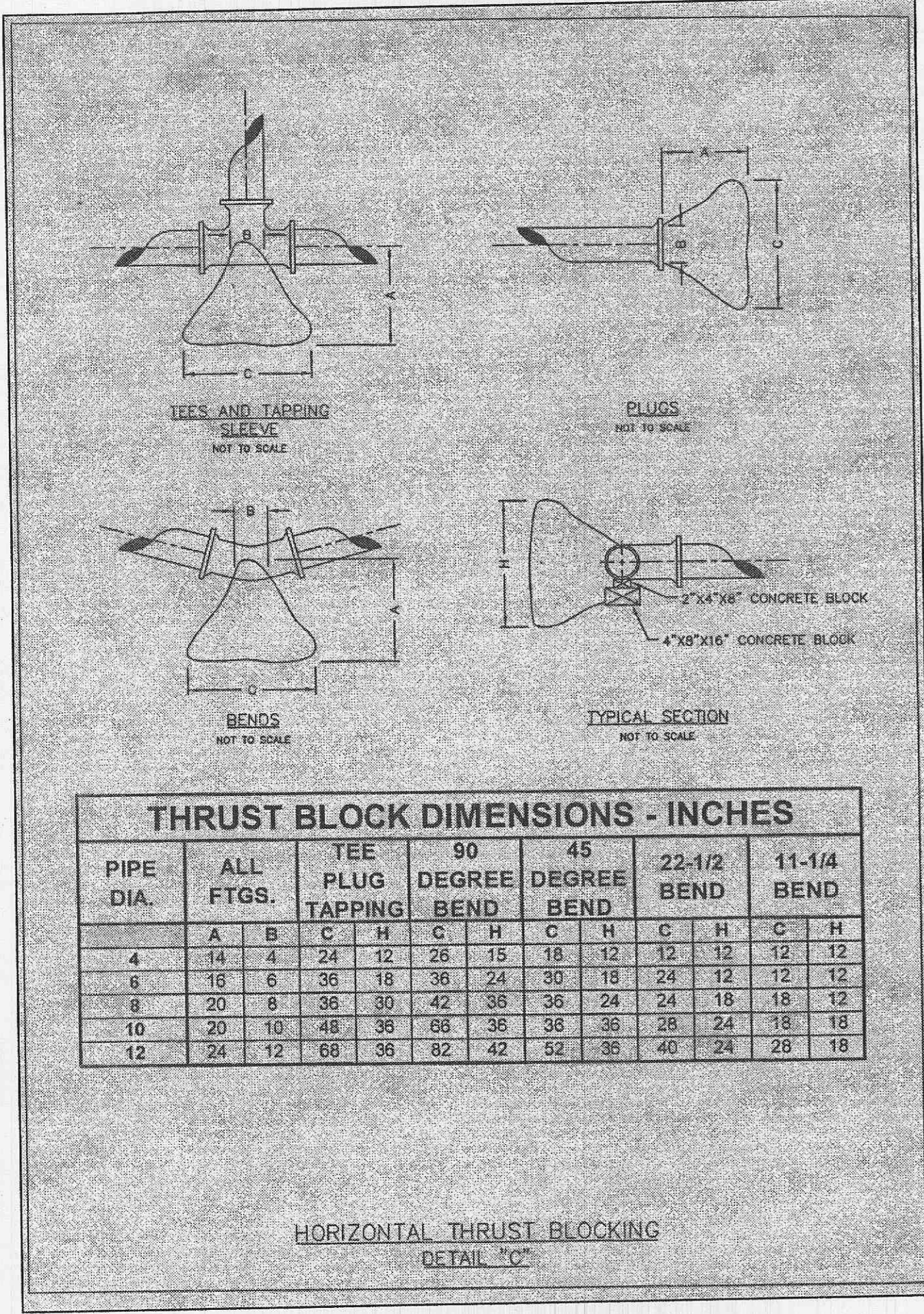


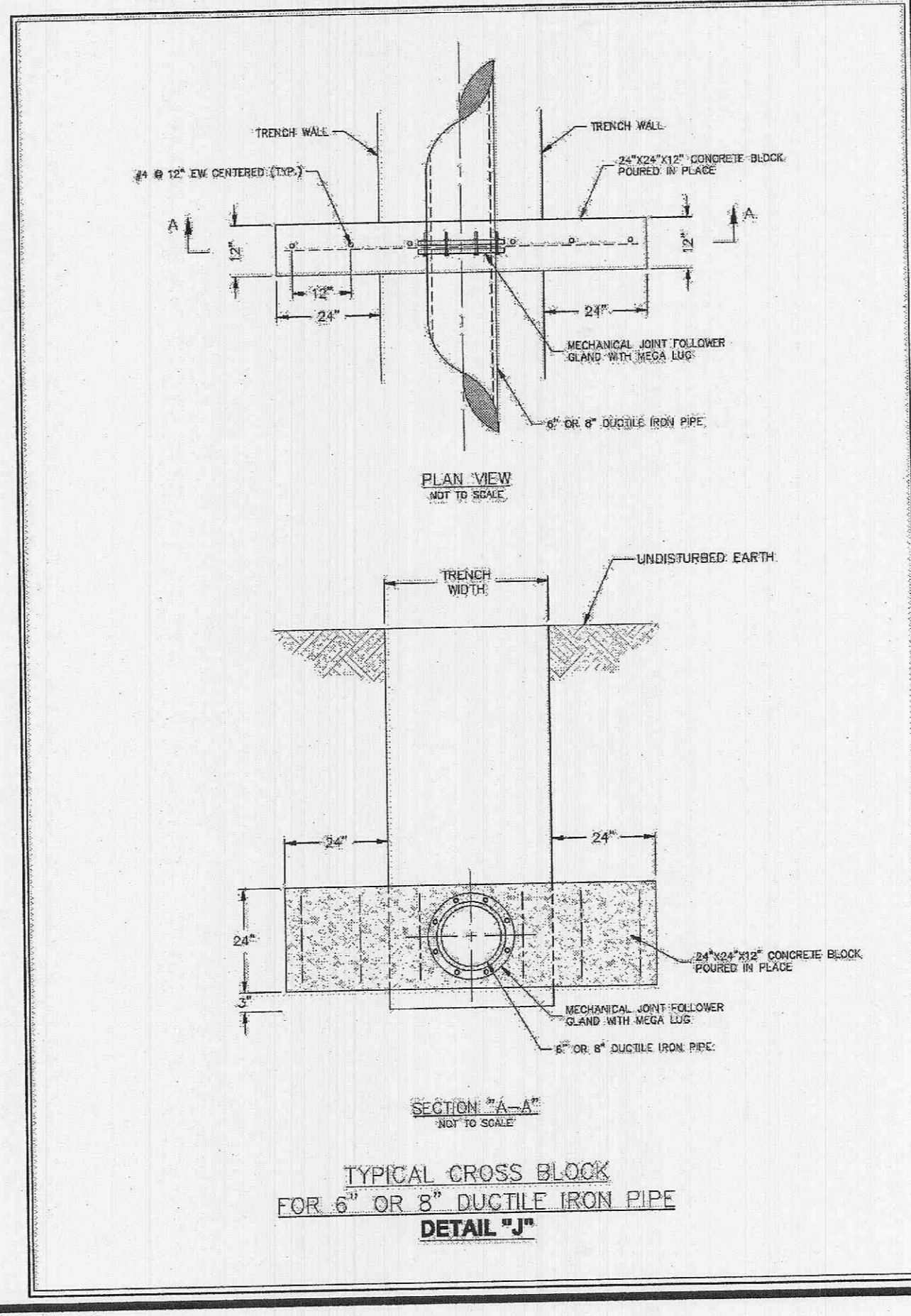
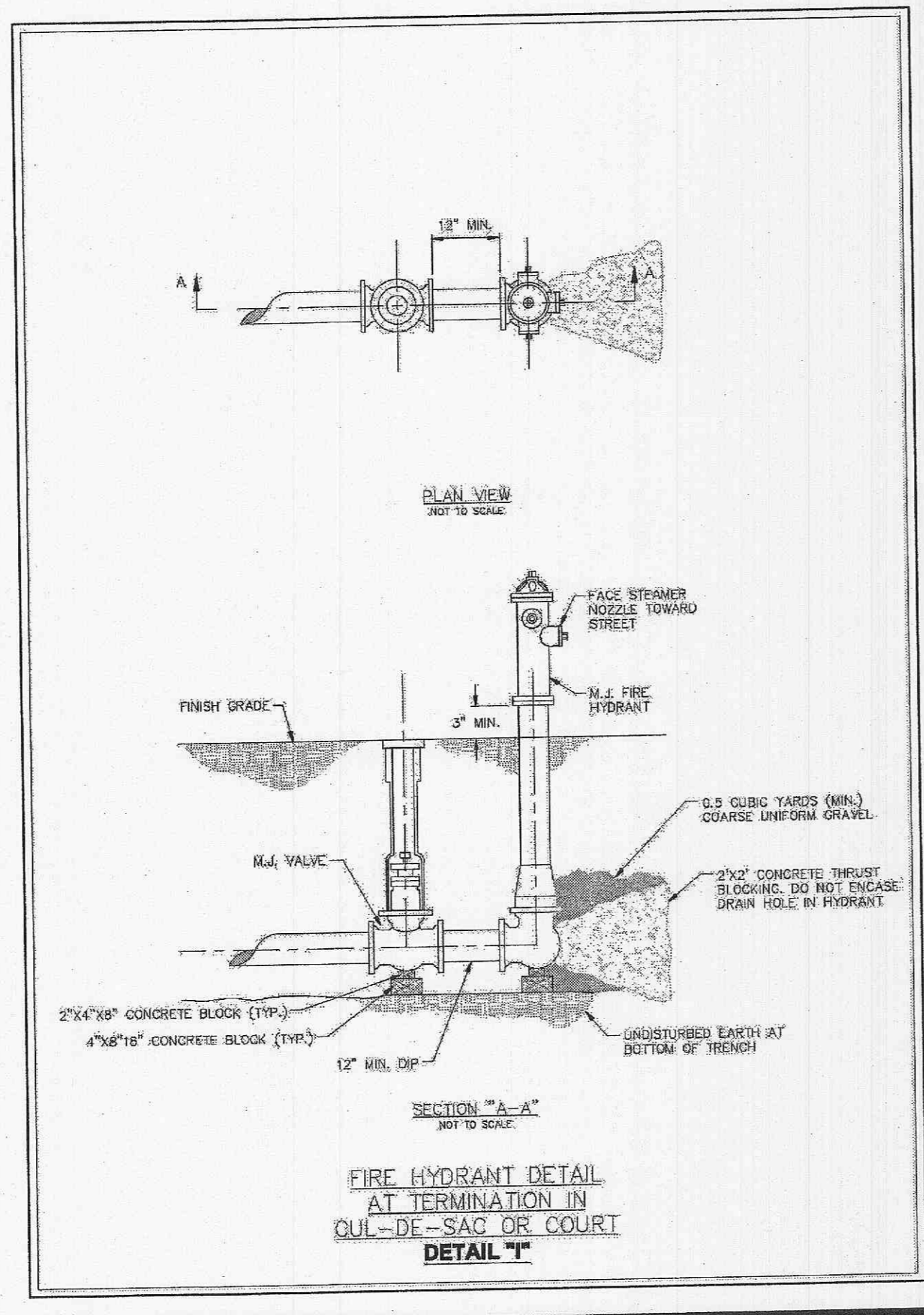
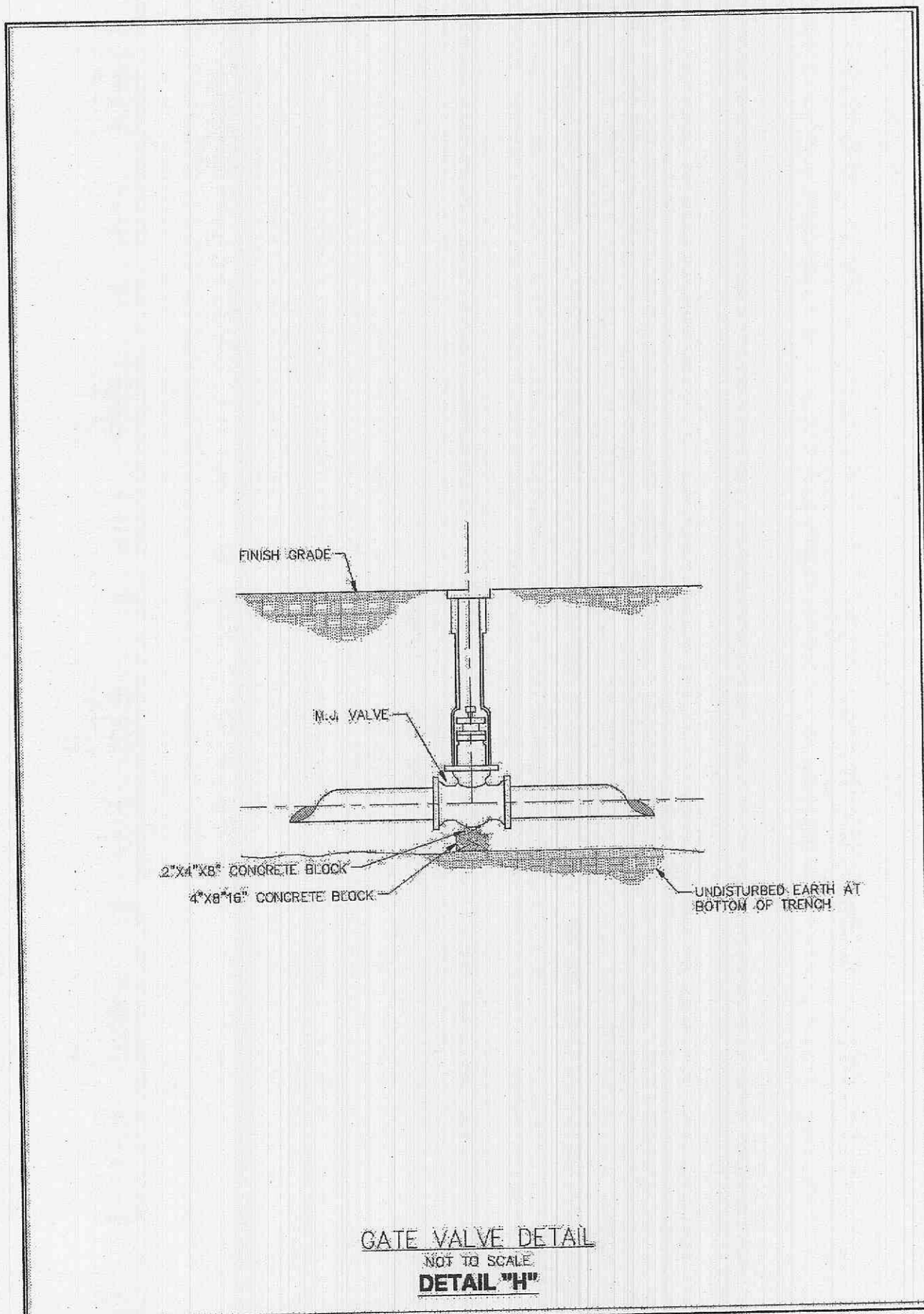
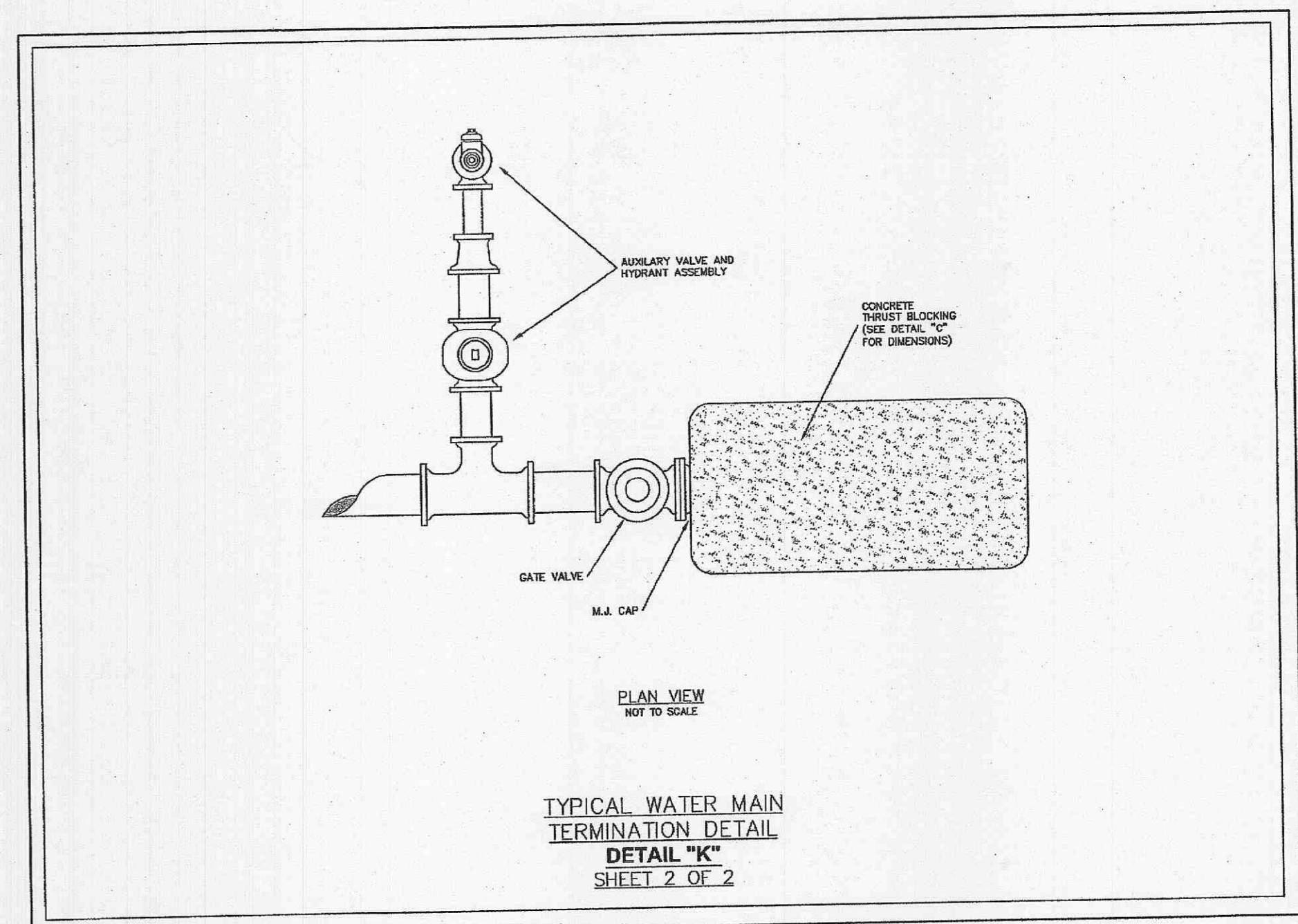
LAYOUT: WATER DETAIL 10.11
 DATE: APR 25, 2008 - 11:18am
 DRAWING: S:\085\08522007\07-0075\C07-0075.dwg IMPROVEMENT PLANS\NO_IP\PLAN_C10.00_DETAILS_07-075.dwg



PIPE SIZE DEGREE BEND

| PIPE SIZE | DEGREE BEND | DOWN BENDS: | | | UP BENDS: | | |
|-----------|-------------|-------------|----|----|-----------|----|----|
| | | W | H | L | W | H | L |
| 4" | 11-1/4" | 18 | 12 | 18 | 12 | 12 | 12 |
| | 22-1/2" | 18 | 18 | 24 | 12 | 12 | 12 |
| | 45" | 18 | 18 | 30 | 12 | 12 | 18 |
| 6" | 11-1/4" | 24 | 18 | 18 | 12 | 12 | 12 |
| | 22-1/2" | 24 | 18 | 24 | 12 | 12 | 12 |
| | 45" | 24 | 18 | 48 | 12 | 12 | 18 |
| 8" | 11-1/4" | 24 | 18 | 24 | 12 | 12 | 18 |
| | 22-1/2" | 24 | 18 | 42 | 12 | 12 | 24 |
| | 45" | 24 | 18 | 48 | 18 | 12 | 24 |
| 10" | 11-1/4" | 30 | 24 | 24 | 18 | 18 | 18 |
| | 22-1/2" | 30 | 24 | 42 | 18 | 18 | 24 |
| | 45" | 30 | 24 | 72 | 18 | 18 | 36 |
| 12" | 11-1/4" | 30 | 24 | 30 | 18 | 18 | 18 |
| | 22-1/2" | 30 | 24 | 54 | 18 | 18 | 30 |
| | 45" | 30 | 36 | 72 | 24 | 18 | 36 |

**DIMENSIONS FOR VERTICAL BENDS
 (IN INCHES)
 DETAIL "D"
 PAGE 2 of 2**



PLANNING AND DEVELOPMENT DEPARTMENT FILE #9831.57 (AREA PLAN-APPROVED MAY 24TH, ORDINANCE #5178) - 9831.57.01 (FINAL PLAN)

**PARK AVENUE VILLAGE
 IMPROVEMENT PLANS**
 PHOENIX PARKWAY
 OF FALLON, MO

designing • engineering • surveying • landscape architecture
**Cole and Associates
 INCORPORATED**
 10777 sunset office drive
 saint louis, missouri
 p: 314 984 9887 f: 314 984 0597

DESIGNED BY
 CJB
 DRAWN BY
 KDK
 CHECKED BY
 JFH
 DATE
 11/6/07
 Job Number
 07-075
 Sheet Number
C10.11

REVISIONS

| DATE | DESC. | BY | CHKD. | APPD. |
|------------|---|----|-------|-------|
| 07/13/2008 | A CITY OF OF FALLON/FINIS #70552 COMMENTS | | | |
| 07/14/2008 | A CITY OF OF FALLON/FINIS #70552 COMMENTS | | | |
| 07/17/2008 | A CITY OF OF FALLON/FINIS #70552 COMMENTS | | | |

DEVELOPER/OWNER:
**THE VILLAGE AT PARK PLACE LLC,
 1001 BOARDWALK SPRINGS PL
 OF FALLON, MO 63366
 PHONE: (636) 561-9323**

THE PROFESSIONAL SEAL, SIGNATURE AND PERSONAL SEAL APPEAR HEREON ASSUMES RESPONSIBILITY ONLY FOR WHAT APPEARS ON THIS PAGE, AND DISCLAIMS LIABILITY TO SECTION 327. ALL OTHERS ARE NOT BEING ACCOUNTED OF OR INSTALLED TO BE USED FOR ANY PART OR PARTS OF THE PROJECT TO WHICH THIS PAGE REFERS.

SEAL
 MATHIEU E. HUBER
 PROFESSIONAL ENGINEER
 No. 2007034890
 State of Missouri

4/29/08