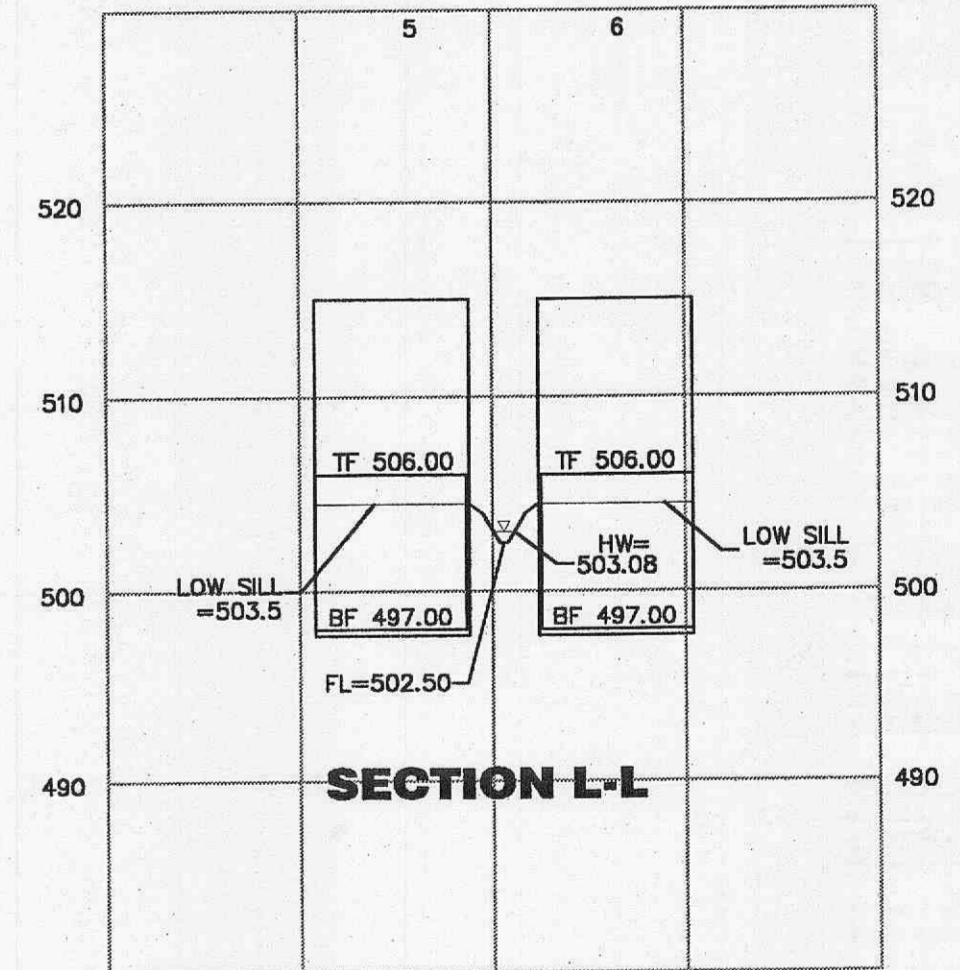
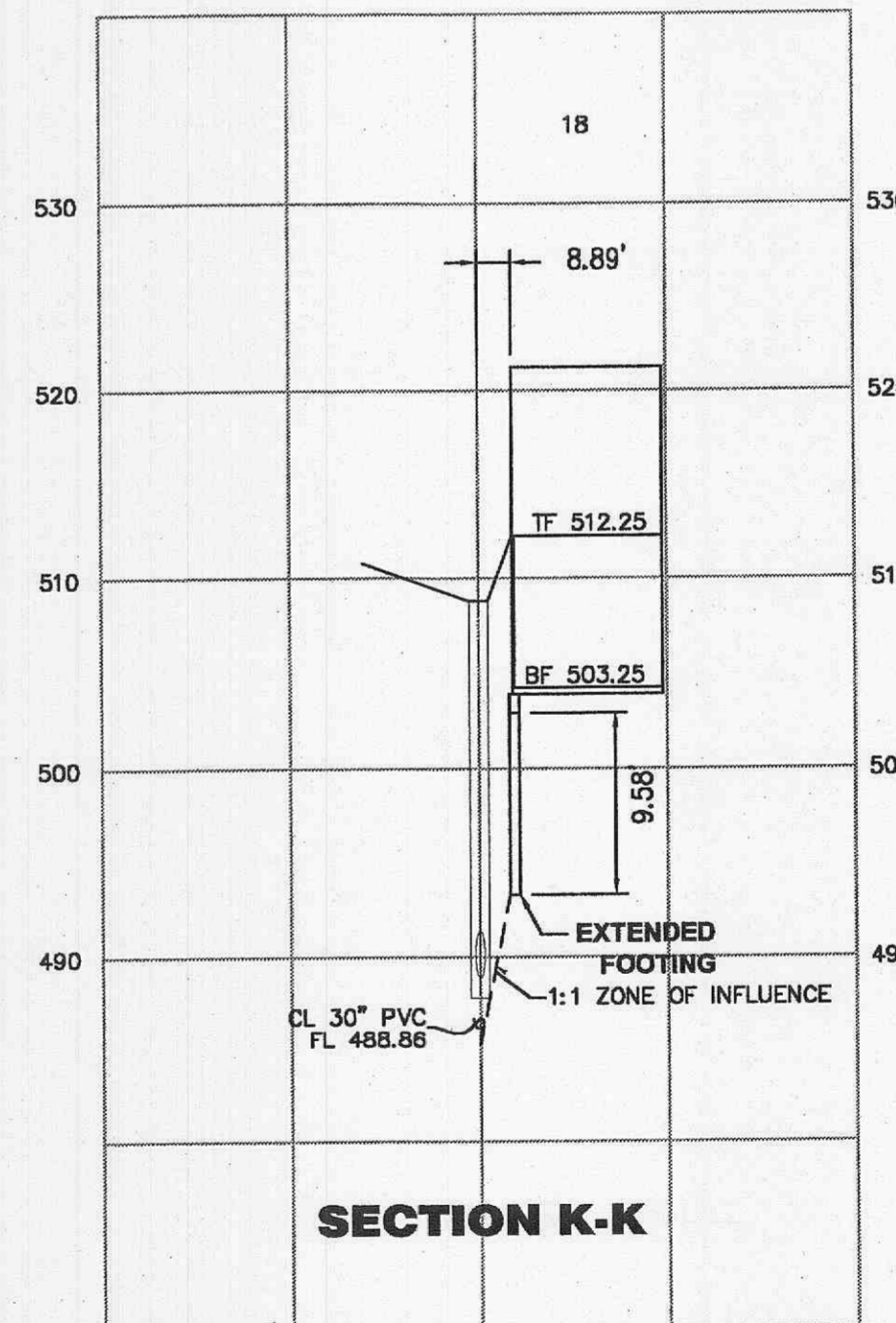
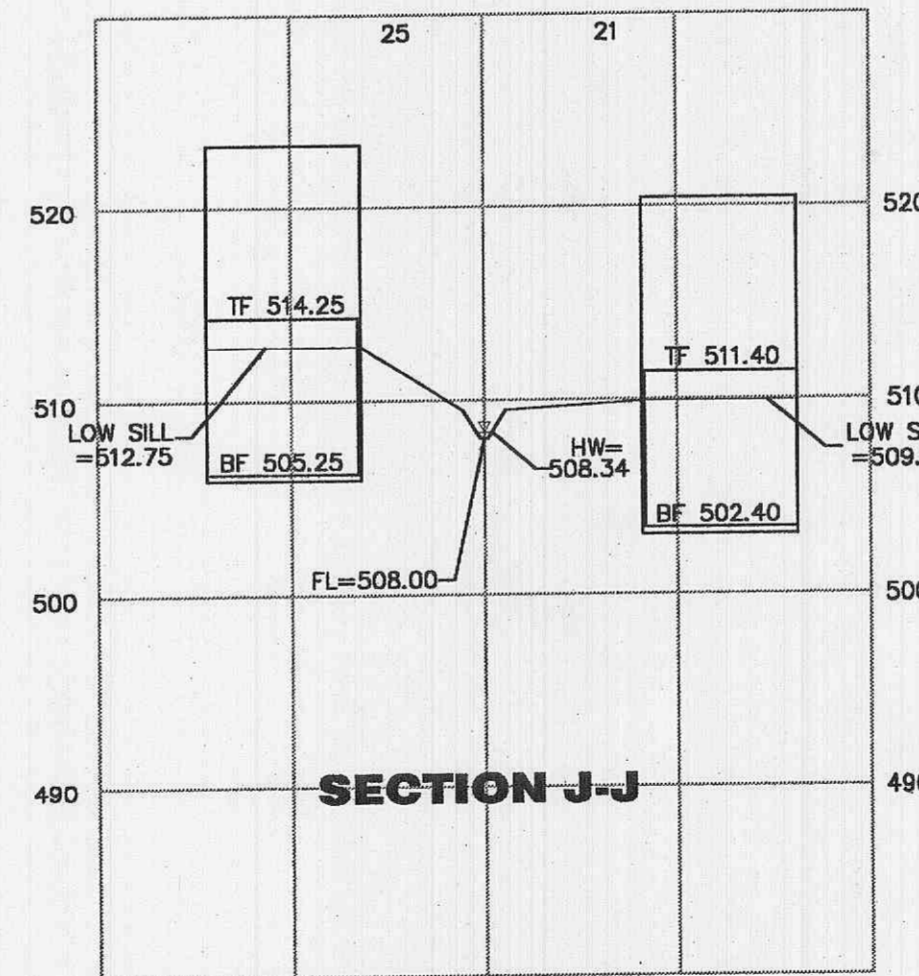
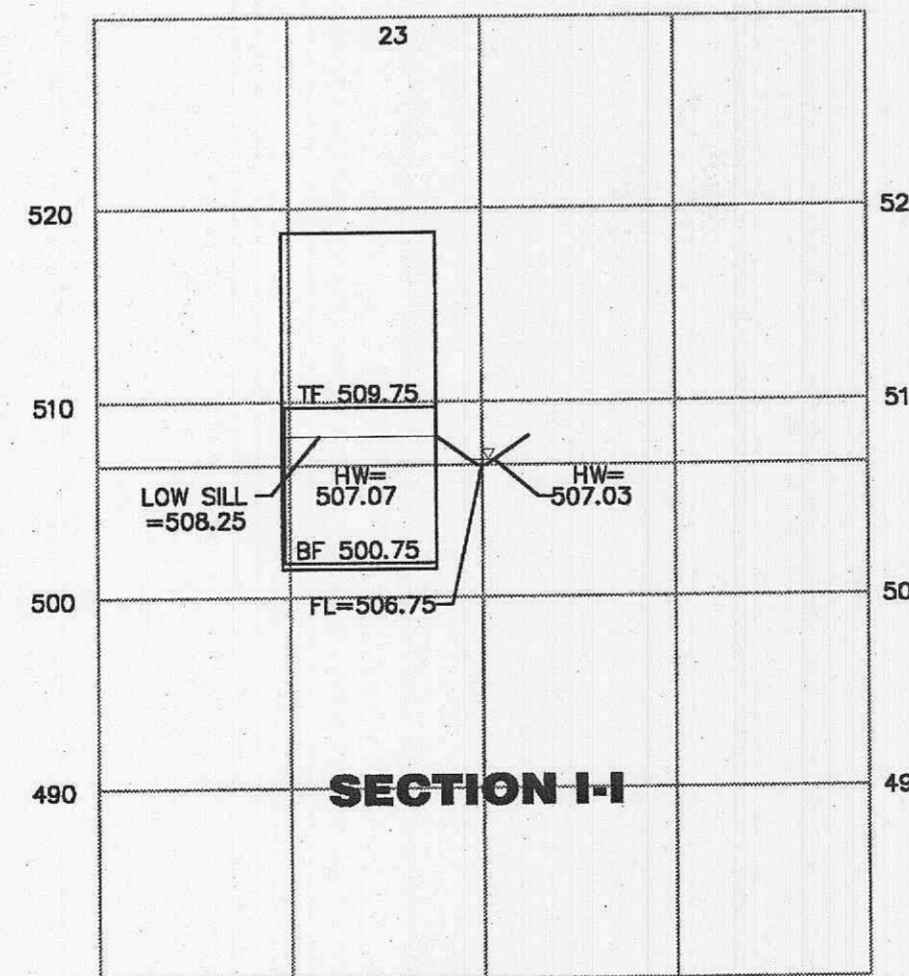
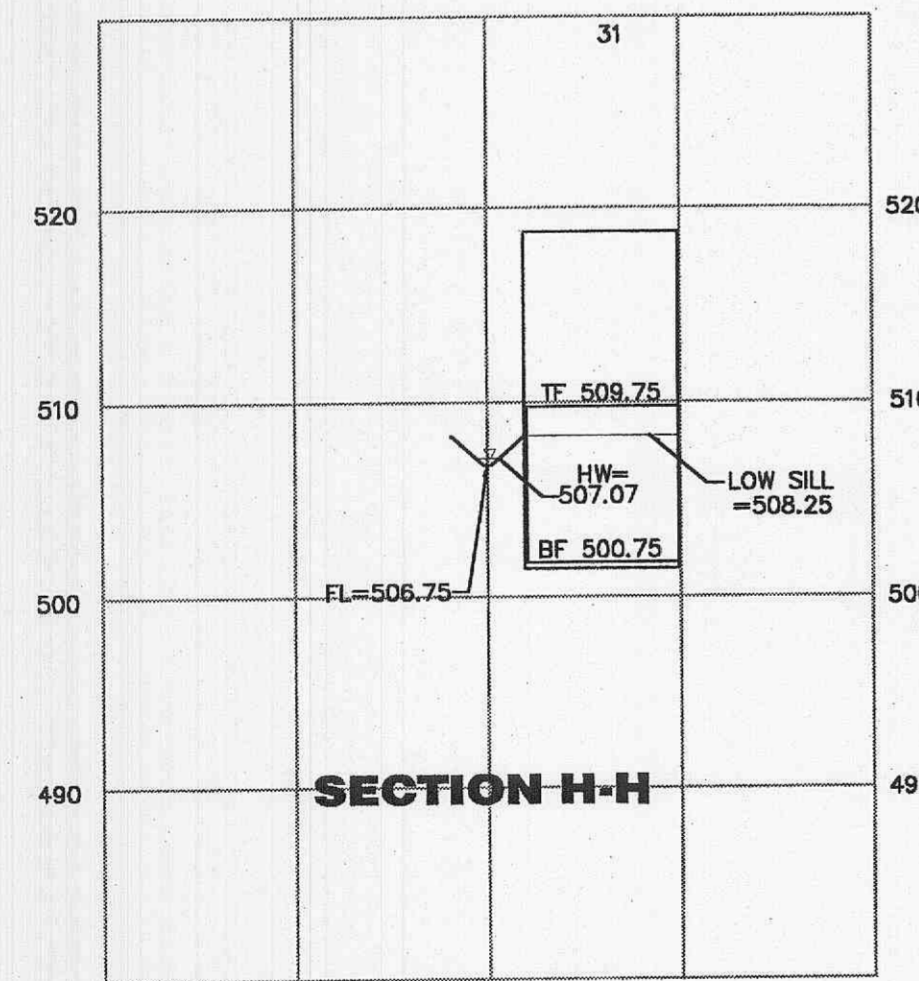
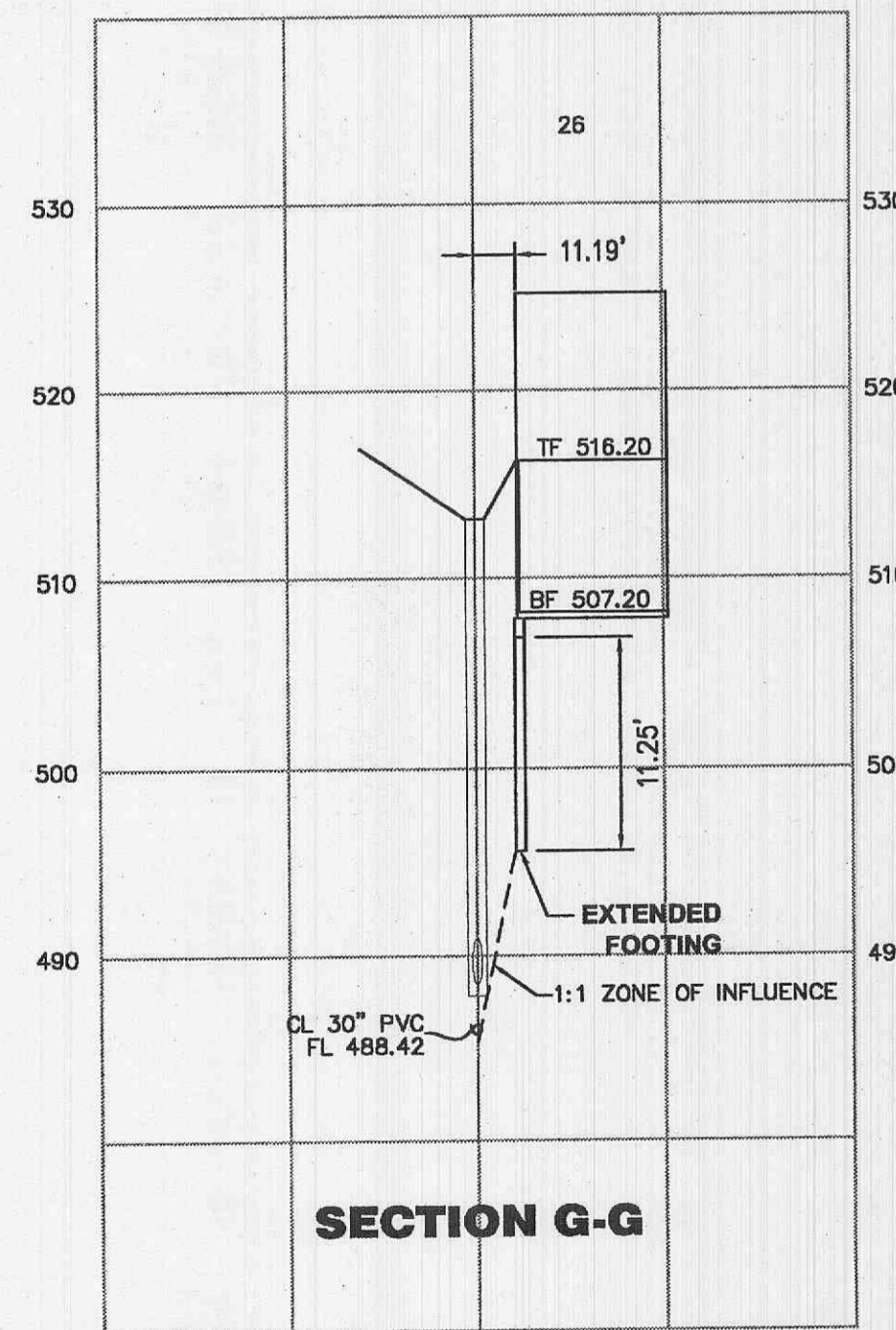
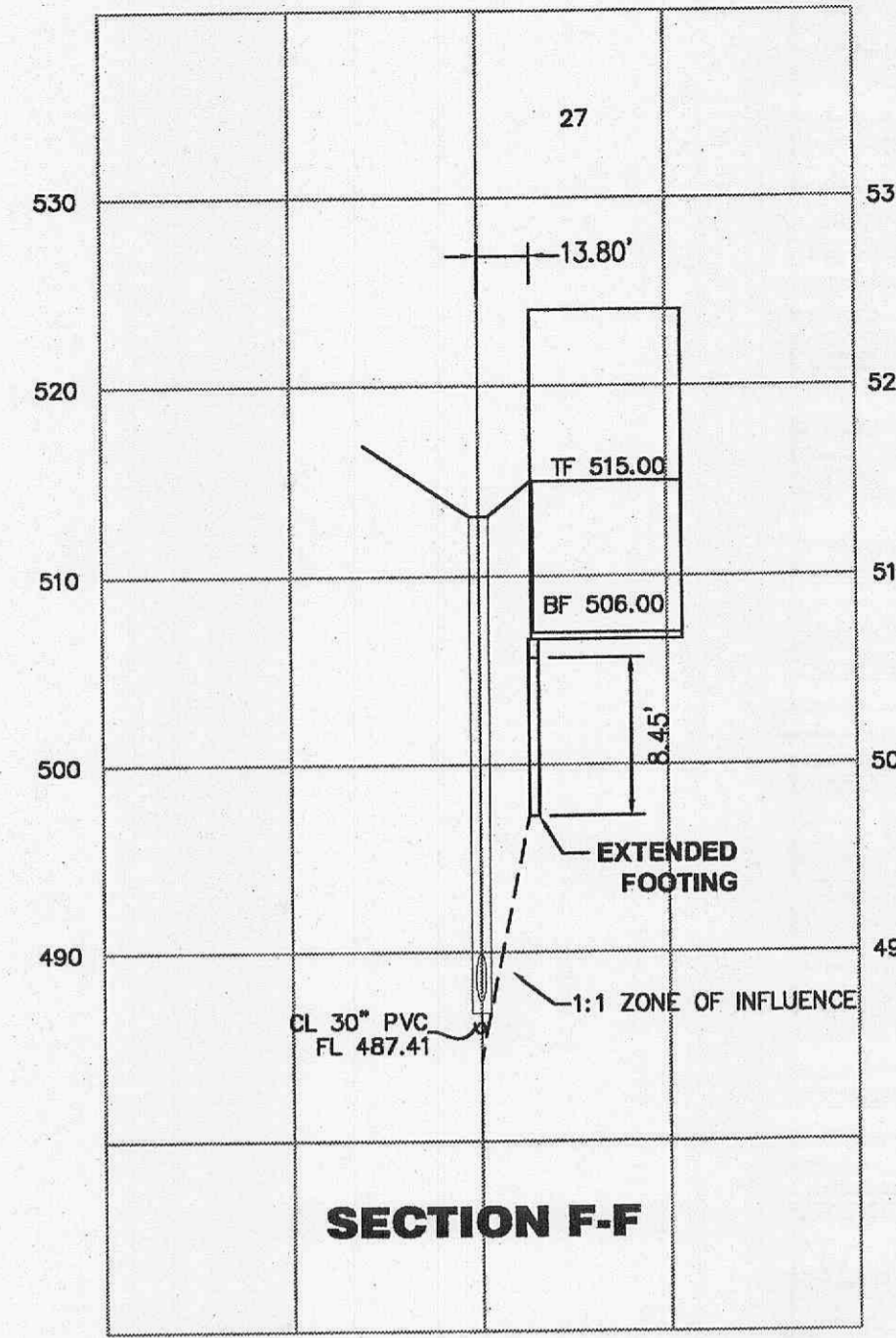
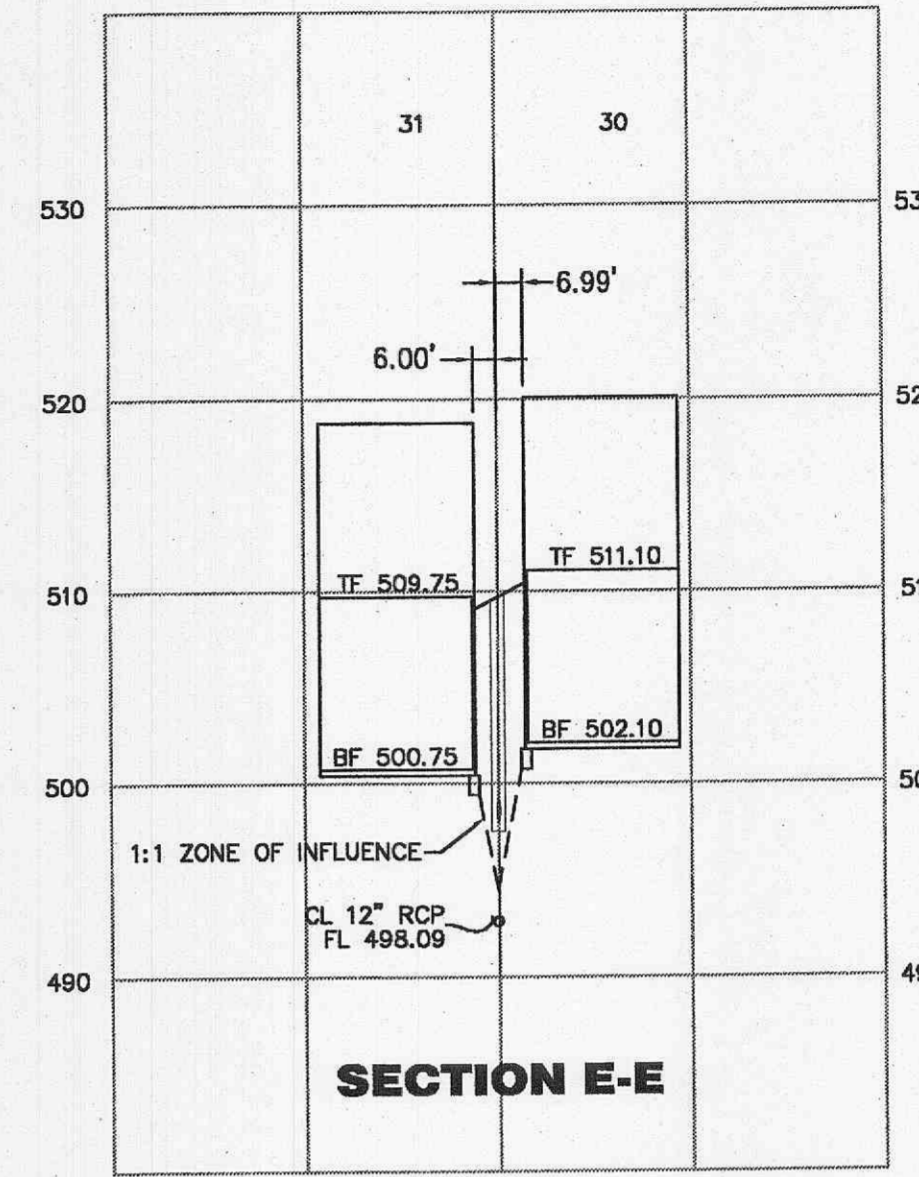
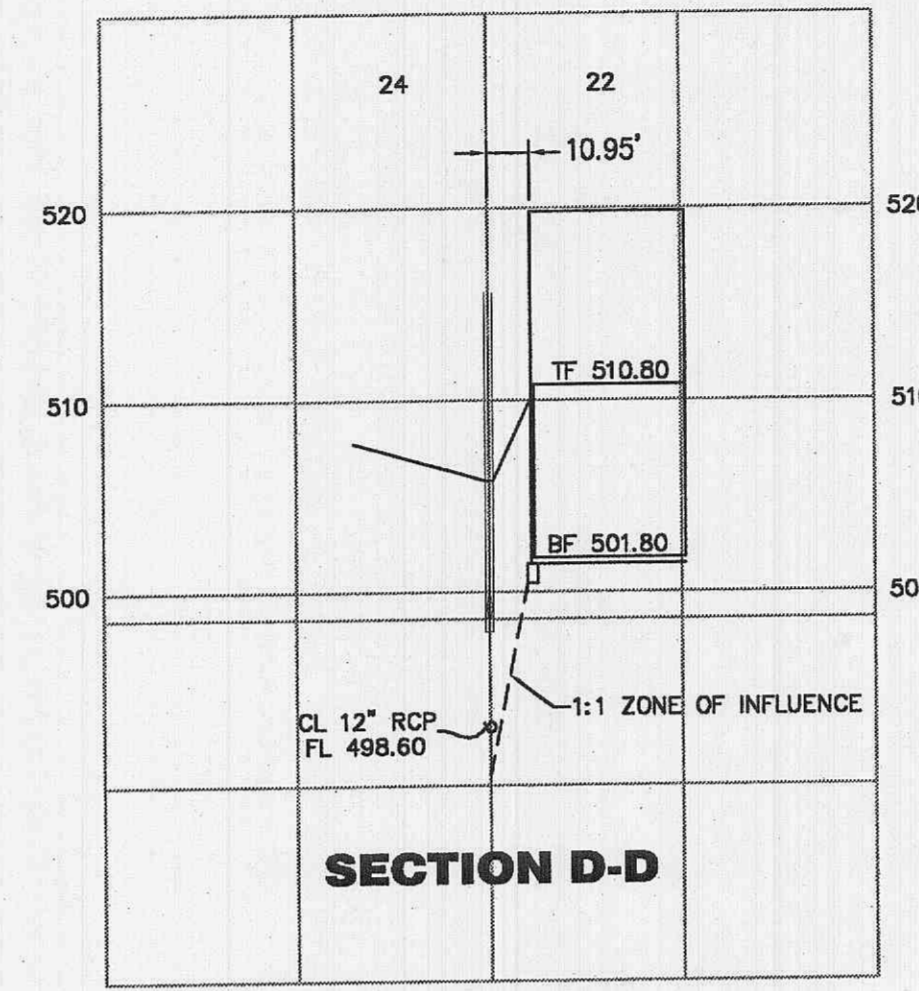
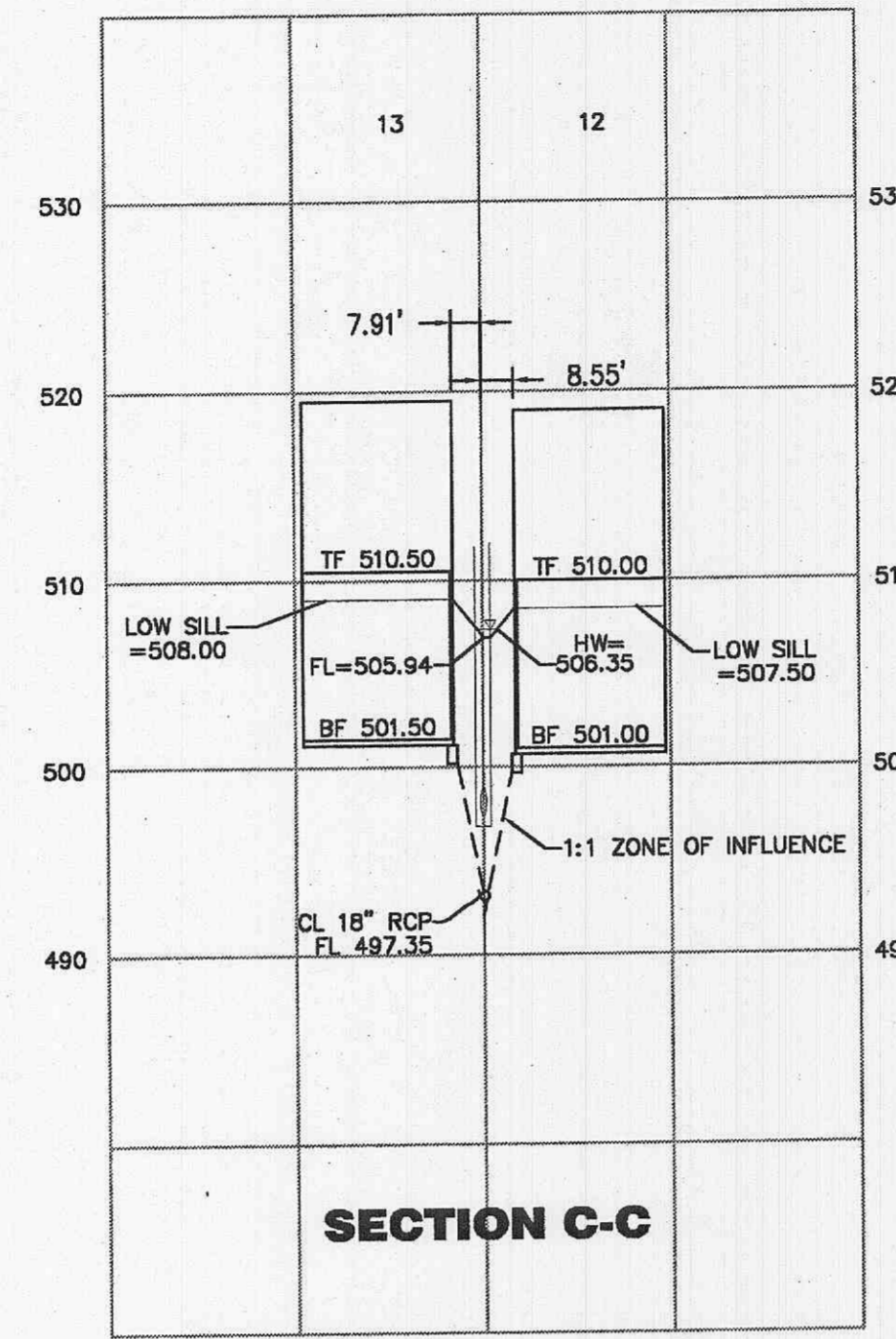
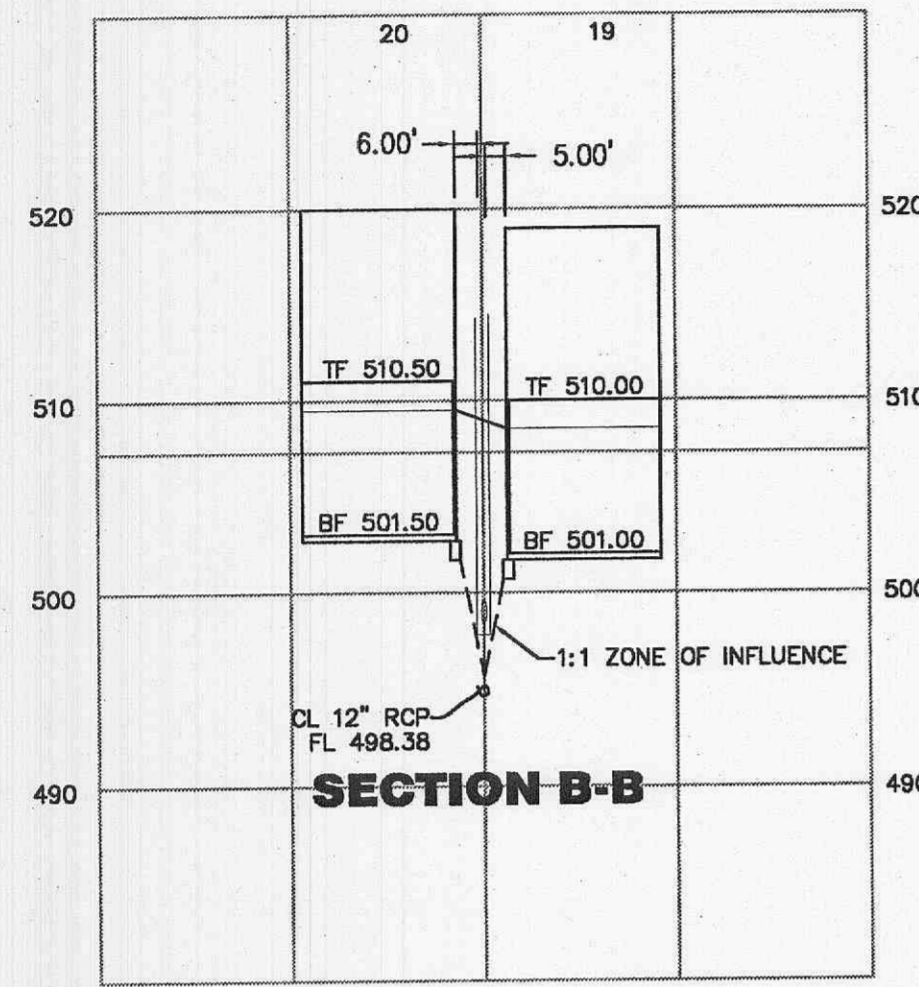
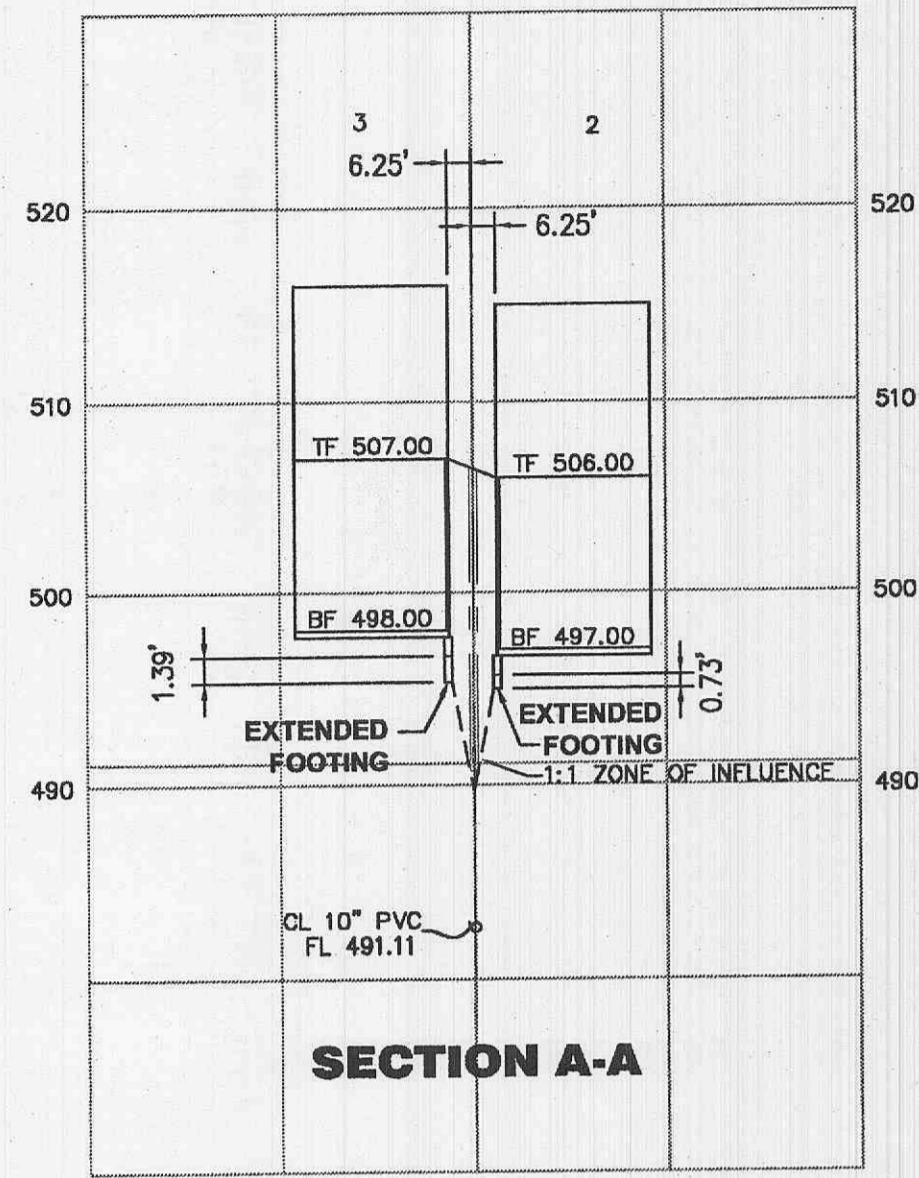


LAYOUT CROSS SECTIONS 10.12
 DATE: Apr 25, 2008 11:16am
 DRAWING: S:\JOBS\Job2007-07-0075\007-0075.dwg



DETAILS OF THE EXTENDED FOOTINGS WILL NEED TO BE SUBMITTED TO THE CITY OF OFFALLON BUILDING DEPARTMENT FOR REVIEW AND APPROVAL PRIOR TO ISSUANCE OF A BUILDING PERMIT

SCALE: 1" = 50' HORIZ.
 1" = 10' VERT.

DATE	REVISIONS
02/17/2008	CITY OF OFFALLON/PLNSL #/USED COMMENTS
03/17/2008	CITY OF OFFALLON/PLNSL #/USED COMMENTS
04/17/2008	CITY OF OFFALLON/PLNSL #/USED COMMENTS
04/17/2008	CITY OF OFFALLON/PLNSL #/USED COMMENTS

DEVELOPER/OWNER:
THE VILLAGE AT PARK PLACE, LLC.
 1001 BOARDWALK SPRINGS PL
 OFFALLON, MO 63366
 PHONE: (636) 561-9323



PLANNING AND DEVELOPMENT DEPARTMENT FILE #9831.57 (AREA PLAN-APPROVED MAY 24TH, ORDINANCE #5178) - 9831.57.01 (FINAL PLAN)
PARK AVENUE VILLAGE IMPROVEMENT PLANS
 PHOENIX PARKWAY
 OFFALLON, MO

planning • engineering • surveying • landscape architecture
Gole and ASSOCIATES INCORPORATED
 10777 sunset office drive
 scottdale, mo 63127
 p: 314.984.9887 f: 314.984.0587

DESIGNED BY: C.B.
 DRAWN BY: KDK
 CHECKED BY: JFH
 DATE: 11/6/07
 Job Number: 07-075
 Sheet Number: C10.12