

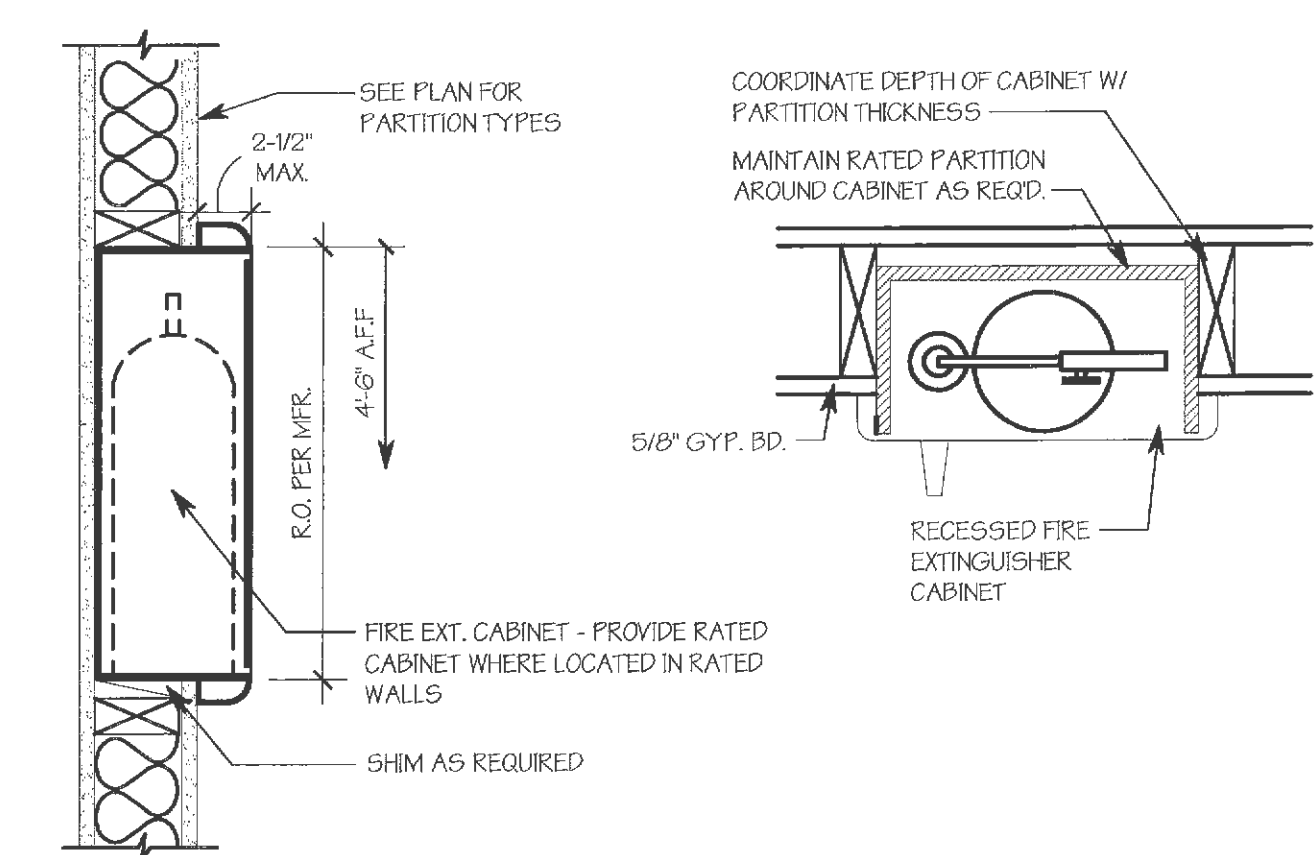
GENERAL NOTES

1. EXIT SIGNS SHALL BE LOCATED IN ACCORDANCE WITH 2009 IBC SECTION 1011 IN COORDINATION W/ LOCAL FIRE MARSHALL.
2. ALL EGRESS ILLUMINATION SHALL COMPLY WITH IBC 2009 SECTION 1006. THE MEANS OF EGRESS ILLUMINATION LEVEL SHALL NOT BE LESS THAN 1 FOOT-CANDLE AT THE WALKING SURFACE LEVEL. SEE ELEC. DWGS. FOR EGRESS ILLUMINATION COMPLIANCE.

LIFE SAFETY LEGEND

- 55' --- TRAVEL DISTANCE TO EXIT
- EXIT SYMBOL
EXIT WIDTH PROVIDED IN INCHES
- ⊗ = EXIT LIGHT
- FE = FIRE EXTINGUISHER CABINET. VERIFY FINAL LOCATIONS WITH LOCAL FIRE MARSHALL
- 1 HOUR RATED WALL

**SEE PARTITION TYPES ON A2.1 FOR SPECIFIC UL DESIGNATIONS



1 LIFE SAFETY PLAN
LS1.1 SCALE: 1/4" = 1'-0"

2 FIRE EXTINGUISHER CABINET
LS1.1 SCALE: 1 1/2" = 1'-0"

CONSULTING ENGINEERS
ELECTRICAL: TBD
FIRE PROTECTION: TBD

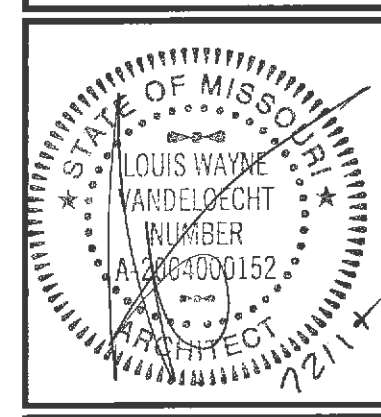
STRUCTURAL: KREFF CONSULTING ENGINEERS
1630 DES PERES RD., SUITE 100
ST. LOUIS, MO. 63131
PH: 633.6524

MECHANICAL: TBD

CONTRACTOR
ARCO
ARCHITECTS, P.C.
100 NORTH ROCK HILL ROAD
ST. LOUIS, MISSOURI 63119
(P) 633.599.9100 (F) 633.599.9101
WWW.ARCONATIONAL.COM

ARCHITECT
GMA
ARCHITECTS, P.A.
900 NORTH ROCK HILL ROAD
ST. LOUIS, MISSOURI 63119
(P) 314.822.6191 (F) 314.893.0714
WWW.GMA-ARCHITECTS.COM

A BUILDING ADDITION FOR:
Park Place
Senior Living at Winghamen
OF FALLON, MO 63368



JOB NO: SJ1408
PA: RJR
PERMIT SET: 07-21-14

REVISIONS Δ

NO.	DESCRIPTION

SHEET NUMBER
LS1.1
LIFE SAFETY PLAN