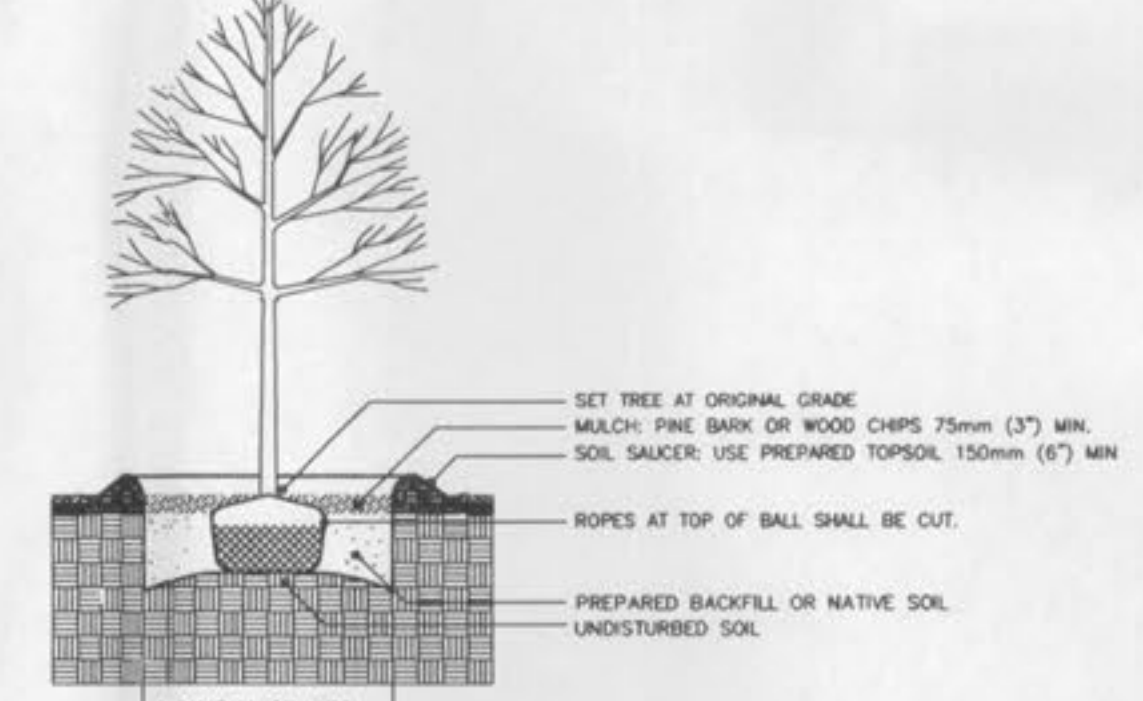
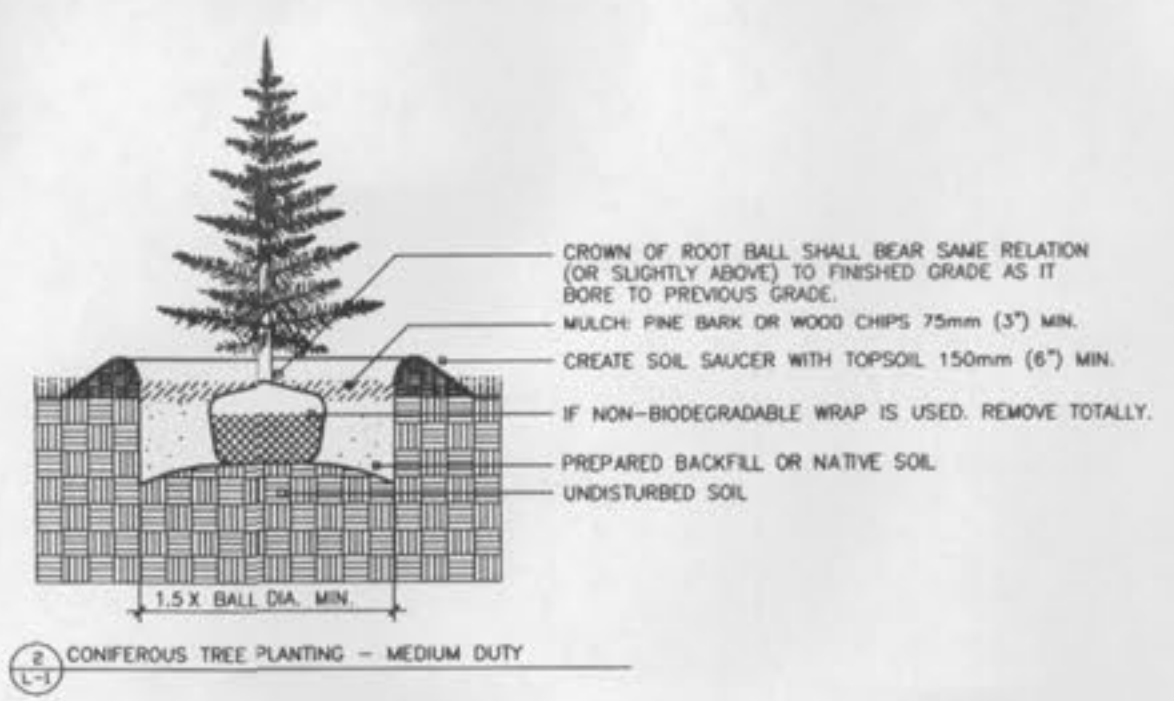
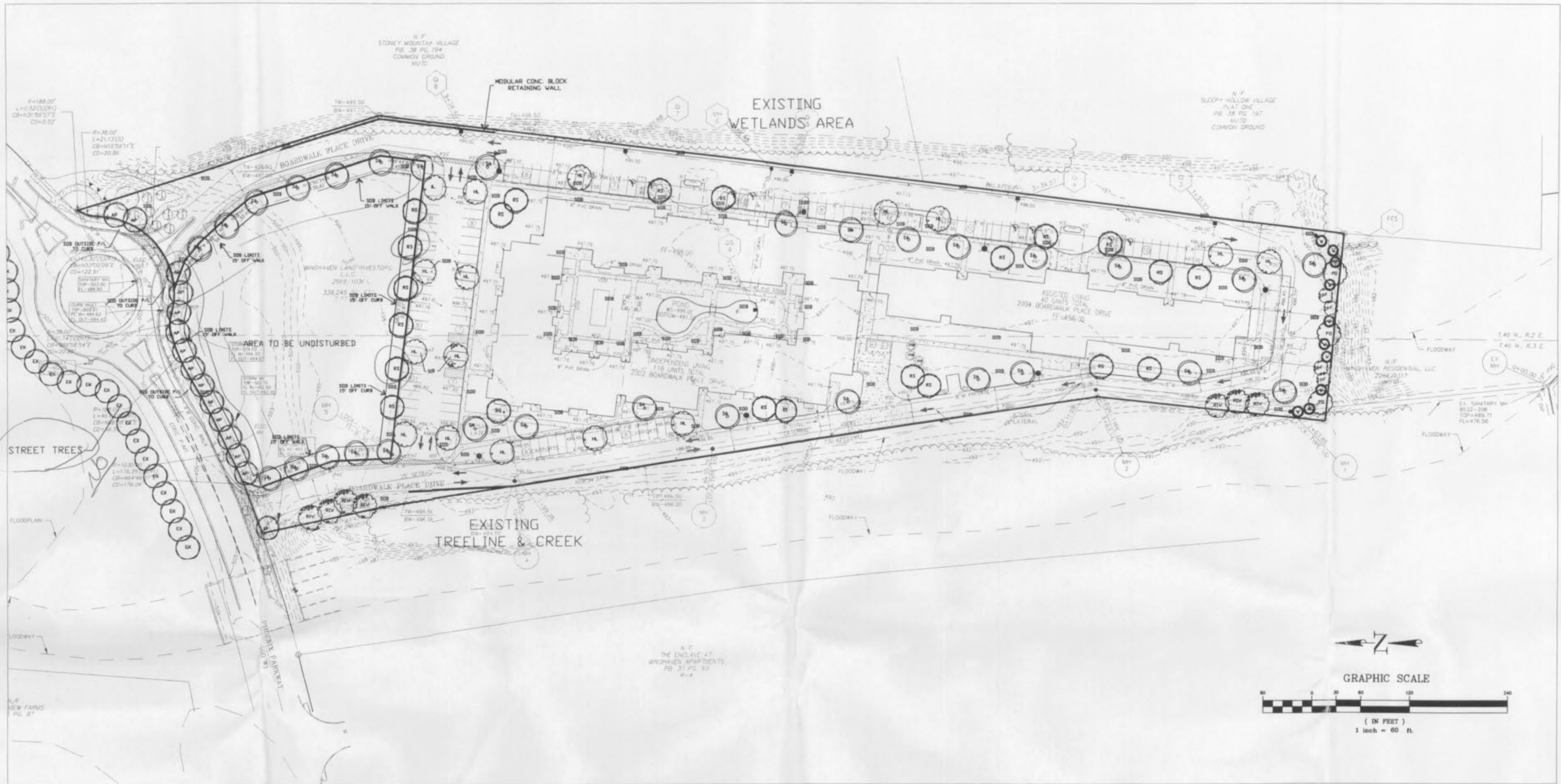


Austin
Carolina
Denver
New York
St. Louis
319 North 4th Street
Suite 1000
St. Louis, MO 63102
Phone: 314.221.5700
Fax: 314.221.5701

Project Team:
General Contractor: PARIC 1001 Boardwalk Springs Pl. D'Alton, MO 63366
Phone: 636.341.9900
Fax: 636.341.9901
Civil Engineer: Pickett Ray & Silver, Inc. 322 Mid Rivers Mall Drive St. Peters, MO 63376
Phone: 636.371.2500
Fax: 636.371.2501
Structural Engineer: ABS Consulting 1844 Lockland Hill Pkwy. St. Louis, MO 63146
Phone: 636.341.7000
Fax: 636.341.7001
Mechanical Contractor: Jamell Mechanical 4208 Rider Trail North Earth City, MO 63045
Phone: 636.291.2800
Fax: 636.291.2801
Plumbing Contractor: Kyrn Plumbing 12160 Toussaint Avenue Bridgeton, MO 63044
Phone: 636.371.2500
Fax: 636.371.2501
Electrical Contractor: Crown Electrical 3630 South Broadway St. Louis, MO 63118
Phone: 314.807.3800
Fax: 314.807.3801



Project Title:



PLANT MATERIAL LIST				
QTY	SYMB	COMMON / BOTANICAL NAME	SIZE	MATURE SIZE
15	AP	AUTUMN PURPLE ASH- <i>Fraxinus americana</i> 'Autumn Purple'	2.5' CAL	45'
22	RS	RED SUNSET MAPLE- <i>Acer rubrum</i> 'Red Sunset'	2.5' CAL	45'
16	HL	HONEYLOCUST- <i>Gleditsia triacanthos inermis</i> 'Skyline'	2.5' CAL	45'
30	SA	SUMMIT ASH- <i>Fraxinus pennsylvanica</i> 'Summit'	2.5' CAL	45'
3	FD	PIN OAK- <i>Quercus palustris</i>	3' CAL	60'
7	RIV	RIVER BIRCH- <i>Betula nigra</i>	2.5' CAL	50'
4	pf	PRAIRIEFIRE CRAB- <i>Malus 'Prairiefire'</i>	2' CAL	20'
10	V	WHITE PINE- <i>Pinus strobus</i>	8'	45'
3	rs	NORWAY SPRUCE- <i>Picea abies</i>	7'	45'
9,670		*SOD INSIDE P/L	SY	
211		*SOD OUTSIDE P/L TO CURB	SY	

*SOD IS APPROXIMATE, TO BE REMEASURED ONCE CONSTRUCTION IS COMPLETED.

SITE CALCULATIONS
TOTAL AREA = 256,376 SF (5.88 AC.)
PROVIDED GREENSPACE = 79,472 SF (31.0%)
REQUIRED GREENSPACE = 76,913 SF (30.0%)
BUILDING AREA = 74,494 SF (29.0%)
PAVEMENT AREA = 102,410 SF (40.0%)
PAVING, COVERED PARKING, CANOPIES, AND SIDEWALKS

PARKING STANDARDS
PARKING FACILITIES SHALL BE BUFFERED AND SHADED
2 TREES PER 3 PARKING SPACES 2.5' IN DIAMETER
TOTAL PARKING SPACES = 112
112 / 3 = 37.33 x 2 = 74.66 TREES REQUIRED
75 TREES PROVIDED

STREET TREES
SHALL BE PLANTED ON EACH SIDE OF PUBLIC AND PRIVATE STREETS.
STREET TREES SHALL BE 2.5' IN DIA. @ 20' O.C.
15 STREET TREES PROVIDED

REAR BUFFERYARD
BUFFERYARD=192.01 LN FT ABUTS RESIDENTIAL DISTRICT
2 1/2 PLANTING UNITS PER 100 LN FT= 5 PLANTING UNITS
5 PLANTING UNITS(150 POINTS) CONTAIN THE FOLLOWING:
10 EVERGREEN TREE 8' = 100 POINTS
3 DECIDUOUS TREE 3' CAL. = 30 POINTS
4 FLOWERING/ ORNAMENTAL TREE 2' CAL. = 20 POINTS
150 POINTS REQUIRED, 150 POINTS PROVIDED

TRASH ENCLOSURE AREA
TRASH ENCLOSURE AREA TO BE SCREENED WITH EVERGREENS.

PROJECT: **Park Place**
Independent and Assisted Living Apartments
Phoenix Parkway (Village M)
O'Fallon, Missouri 63366

PROJECT: No. Revision Description Date
1 CITY OF O'FALLON, MO 1-07-05

BUILDING PERMIT SET
Sheet Title: LANDSCAPE PLAN

Project Number: 04188
Sheet Number: C10
Drawn By: C.V.G.
Issue Date: NOV. 15, 2004