

Austin
Carolinas
Denver
New York
St. Louis: 319 North 4th Street
Suite 1000
St. Louis, MO 63102

Phone: 314/231-5700
Fax: 314/231-5701

Project Team:
General Contractor: PARIC
1801 Boardwalk Springs Pl.
O'Fallon, MO 63366
Phone: 636/361-7800
Fax: 636/361-7801

Civil Engineer: Pickett's Bay & Silver, Inc.
323 Mid Rivers Mall Drive
St. Peters, MO 63376
Phone: 636/361-7800
Fax: 636/361-7801

Structural Engineer: ABS Consulting
1244 Lockland Hill Place
St. Louis, MO 63146
Phone: 636/994-7800
Fax: 636/994-7801

Mechanical Contractor: Jorrell Mechanical
4208 Rider Trail North
Earth City, MO 63045
Phone: 636/251-1800
Fax: 636/251-1801

Plumbing Contractor: Kyhl Plumbing
13160 Taussig Avenue
Bridgeport, MO 63044
Phone: 636/261-9200
Fax: 636/261-9201

Electrical Contractor: Crown Electrical
2650 South Broadway
St. Louis, MO 63118
Phone: 636/805-2800
Fax: 636/805-2801

Professional Seal:



Project Title:

13benverprj\prj\Project\8703\dwg\87034_31C DES.dwg, 1/26/2005 10:40:27 AM, JUSTIN W.

Project: **Park Place**
Independent and Assisted Living Apartments
Phoenix Parkway (Village M)

O'Fallon, Missouri 63366

PROJECT: **Park Place**
Independent and Assisted Living Apartments
Phoenix Parkway (Village M)

This drawing and details on it are the sole property of the architect and may be used for this specific project only. It shall not be copied, reprinted, reproduced, in whole or in part, or for any other purpose or project without the written consent of the architect.

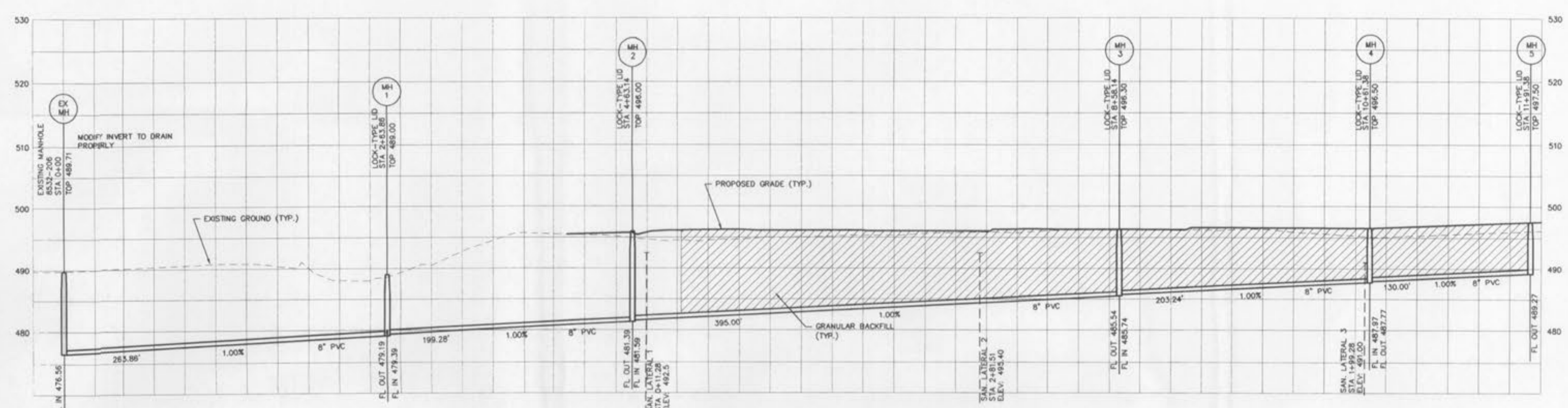
No.	Revision Description	Date
1	CITY OF O'FALLON, DCSO	1-07-05

BUILDING PERMIT SET
Sheet Title:

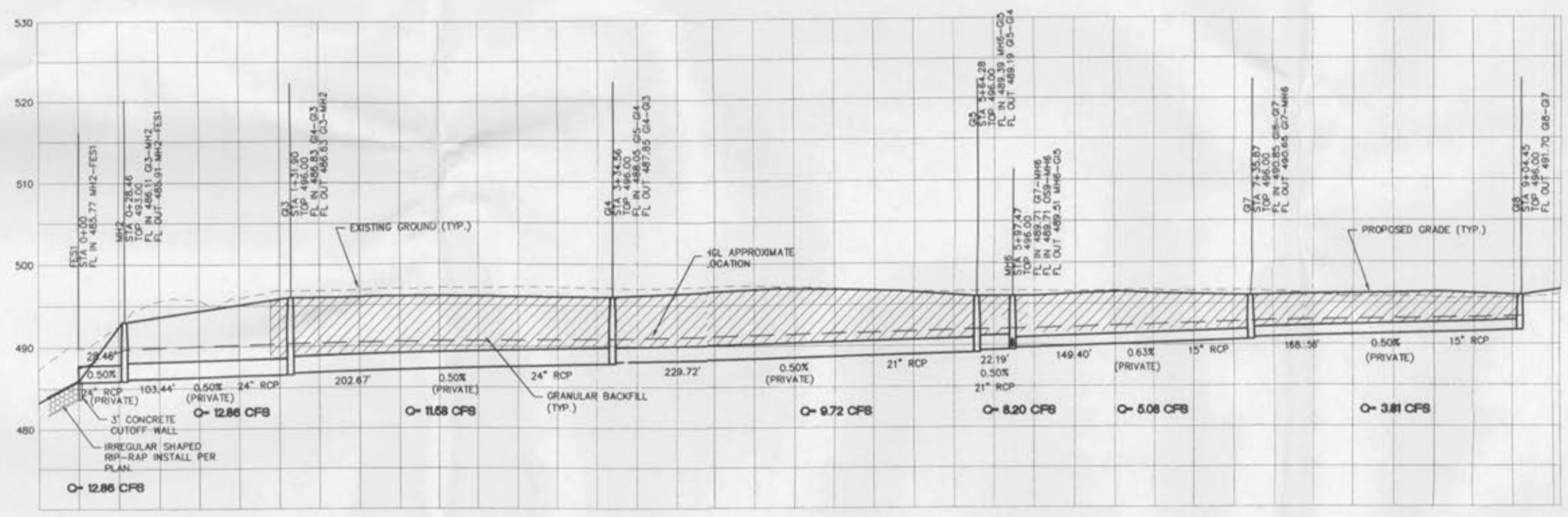
SEWER PROFILES

Project Number: 04188
Sheet Number: **C4**
Drawn By: G.V.C.
Issue Date: NOV. 15, 2004

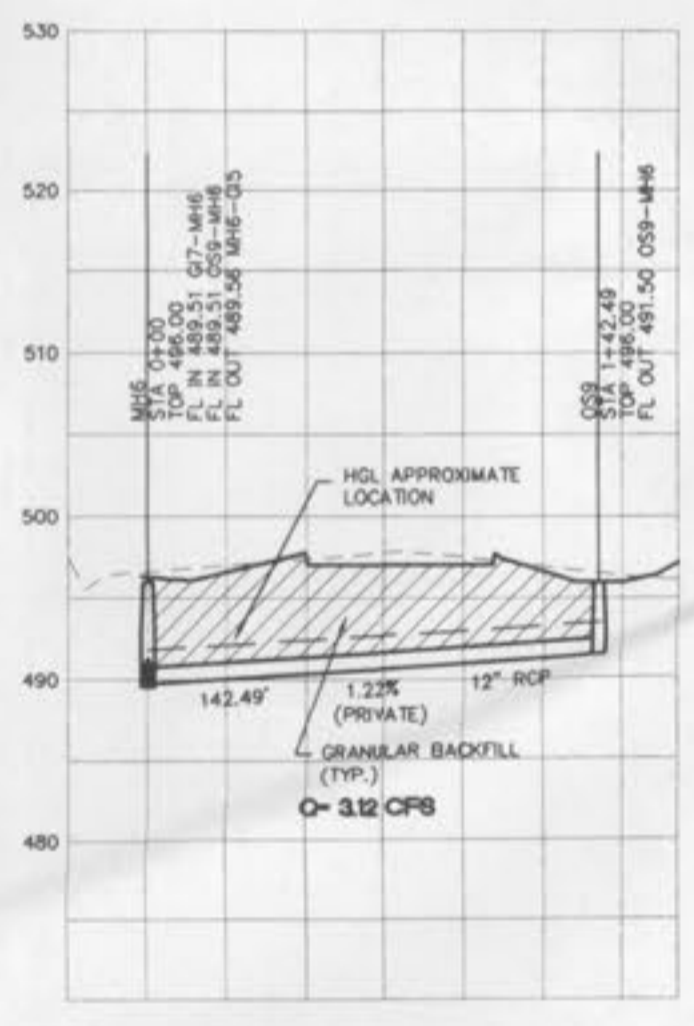
FILE# 9831.51



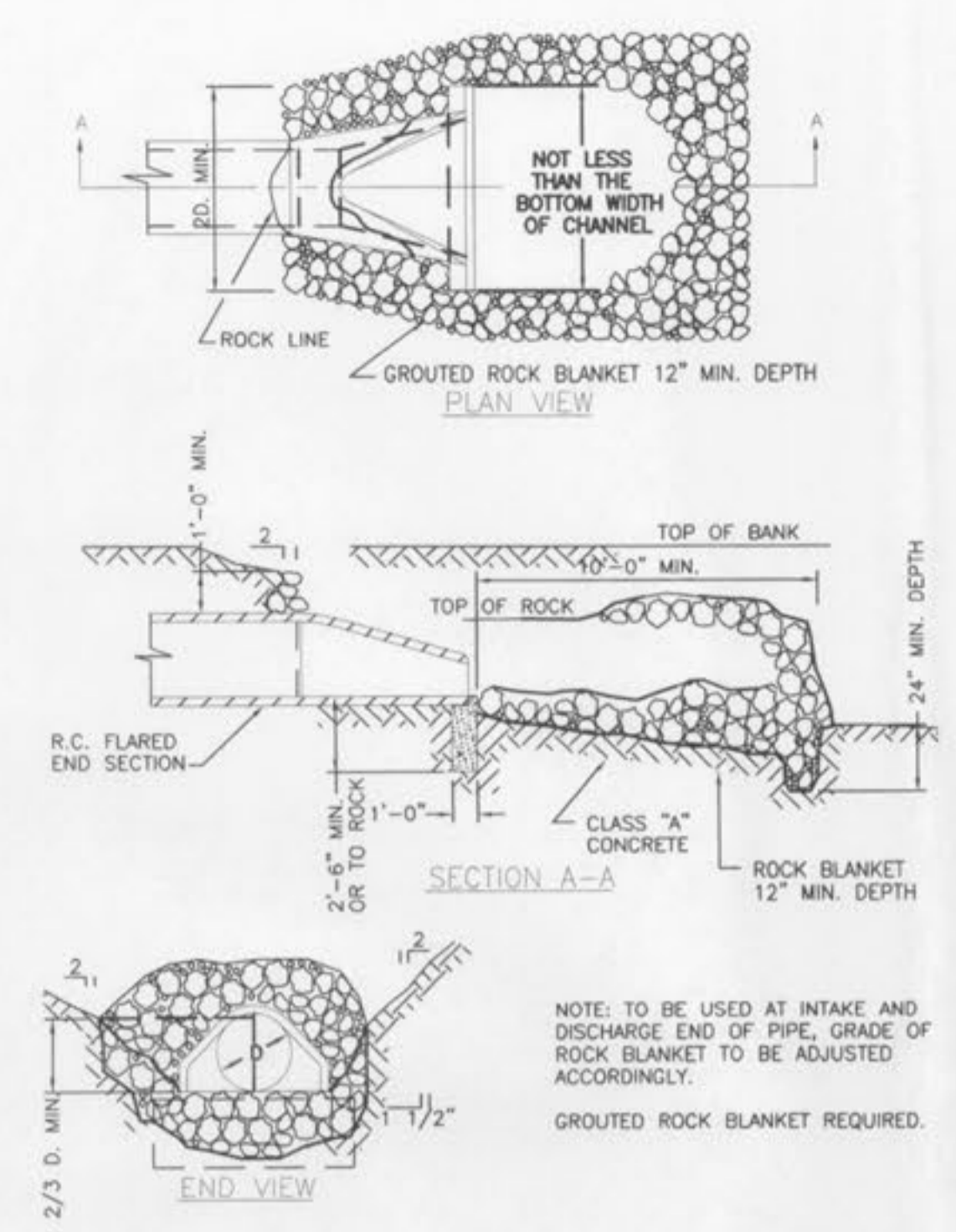
SANITARY PROFILE



STORM PROFILE



STORM PROFILE



CONCRETE FLARED END SECTION

VERT. 1"=12"
HORIZ. 1"=60"
SCALE:

VERT. 1"=12"
HORIZ. 1"=60"
SCALE:

NOTE: TO BE USED AT INTAKE AND DISCHARGE END OF PIPE, GRADE OF ROCK BLANKET TO BE ADJUSTED ACCORDINGLY.
GROUTED ROCK BLANKET REQUIRED.