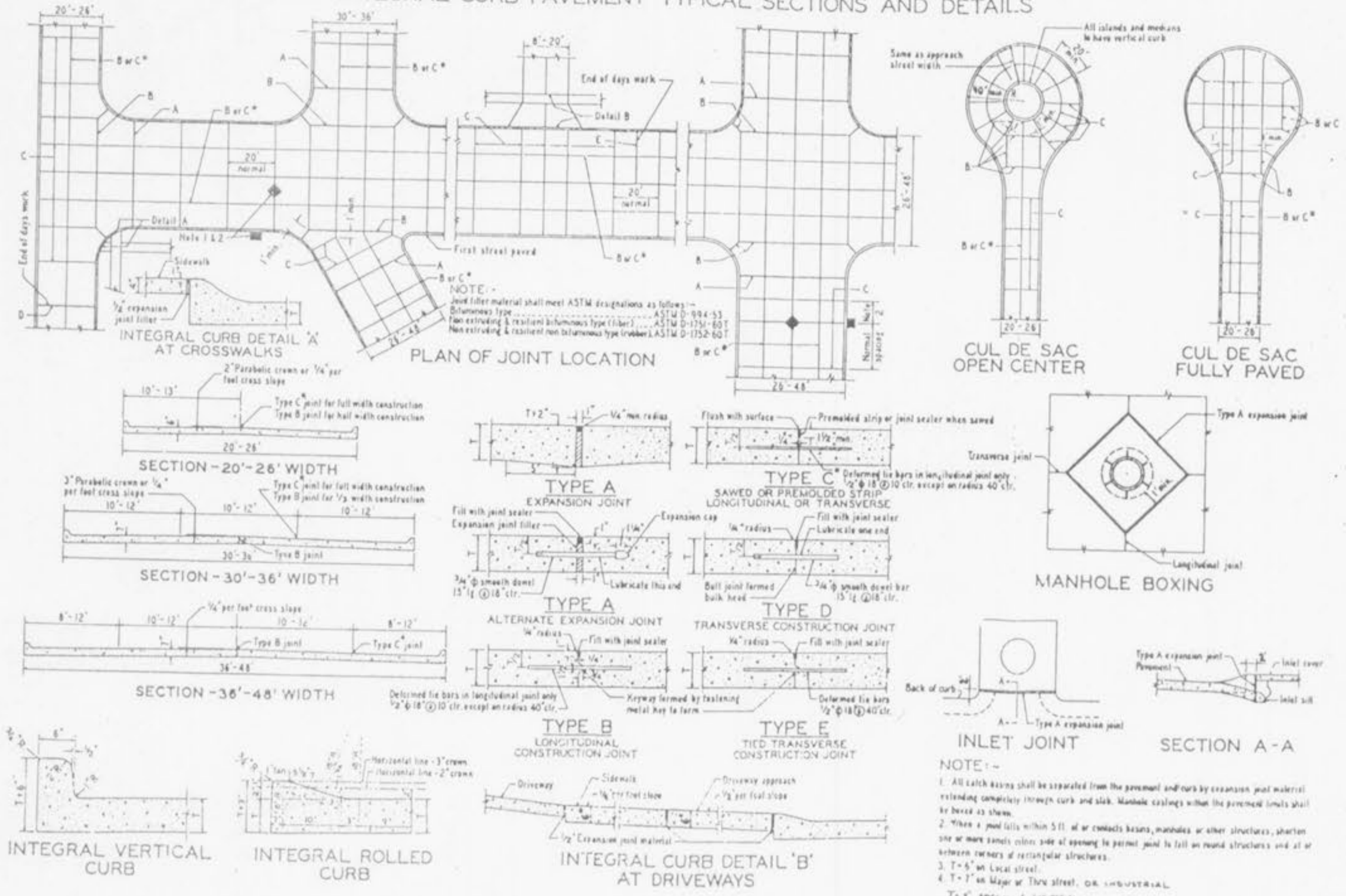
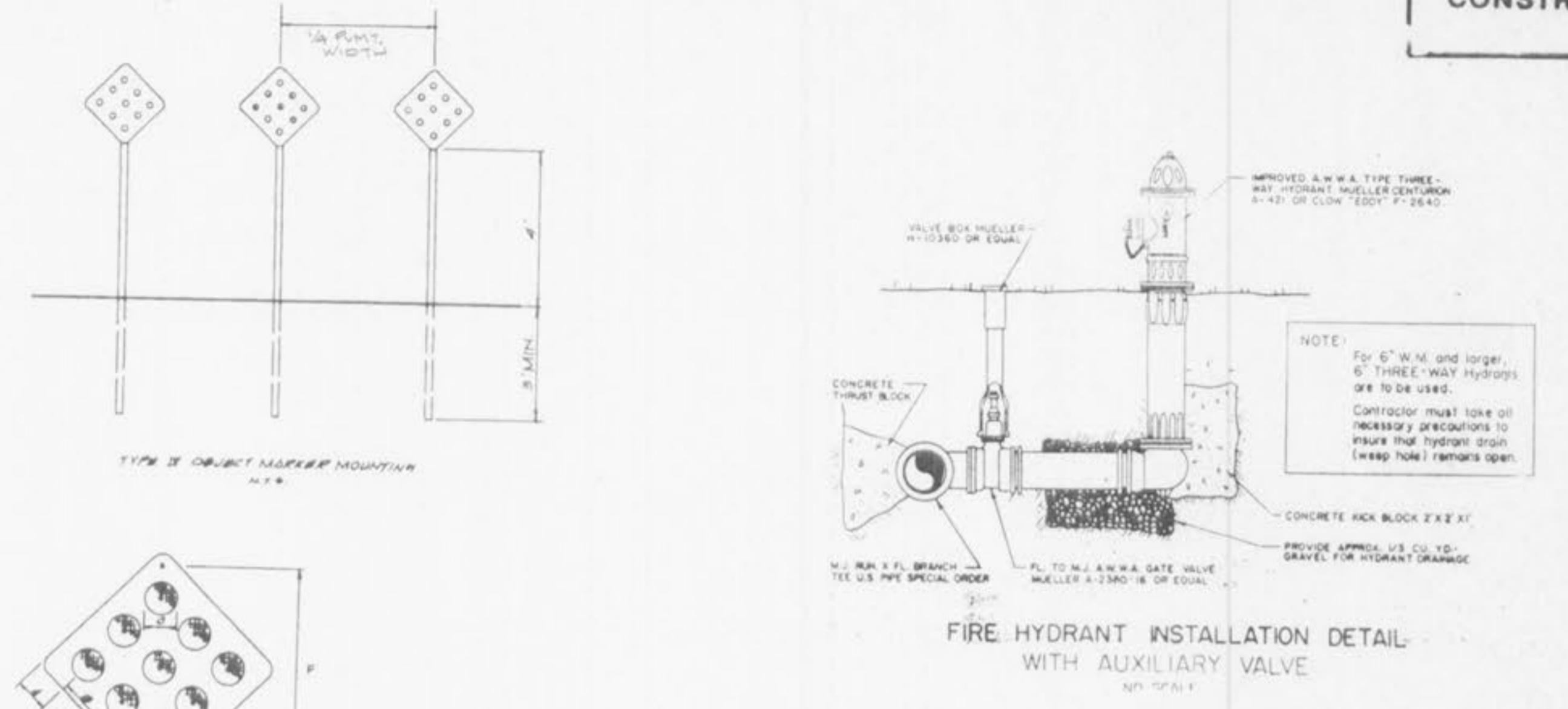


PORTLAND CEMENT CONCRETE
INTEGRAL CURB PAVEMENT TYPICAL SECTIONS AND DETAILS



CONSTRUCTION DETAILS

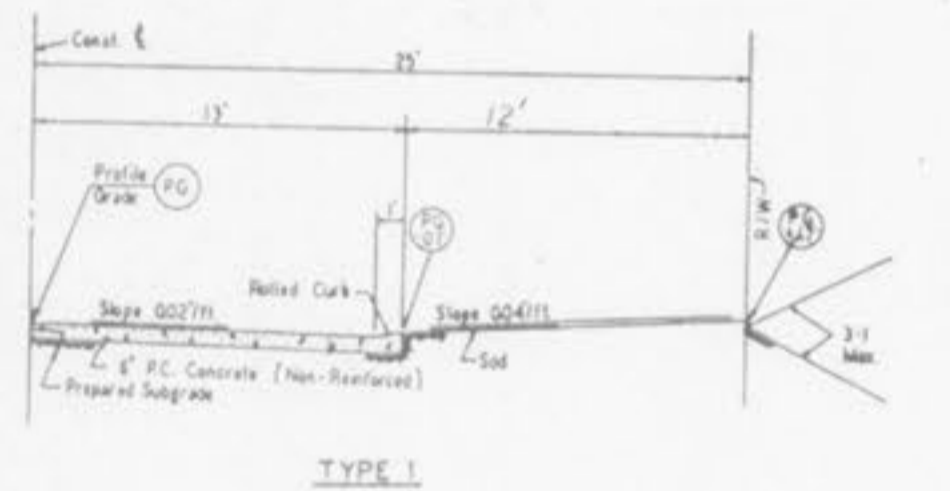


THRUST-BLOCK SCHEDULE

Maximum thrust-block bearing dimensions to bear against undisturbed earth.

WATER MAIN SIZE	BEND 45°	BEND 22 1/2°	TEE	VALVE	CROSS
2"	0.5' x 1'	0.5' x 1'	0.5' x 1'	0.5' x 1'	0.5' x 1'
4"	1' x 1'	1' x 1'	2' x 1'	2' x 1'	1' x 1'
6"	1.5' x 1'	1' x 1'	2' x 1'	2' x 1'	1' x 1'
8"	2' x 1'	1' x 1'	2' x 2.5'	2' x 2'	1' x 1'
10"	2' x 2.5'	1.5' x 2'	3' x 3.5'	2' x 3'	2' x 2'
12"	2' x 3.5'	1.5' x 2.5'	3' x 3.5'	3' x 3'	2' x 3'
16"	3' x 4'	2' x 3'	4' x 4.5'	3' x 4.5'	3' x 3.5'
18"	3' x 4.5'	2' x 3.5'	5' x 5'	4' x 5'	4' x 4'

GATE VALVE W/ THRUST-BLOCK
NO SCALE



- GENERAL NOTES
- Do not scale drawing. Follow dimensions.
 - Sections are symmetrical about construction centerline.
 - For longitudinal and transverse joints, detail and bar requirements and curb dimensions refer to the "Pavement Construction Details" for Joints and Curb, Standard Drawing C604.33.
 - All necessary pavement markings by St. Charles County.
 - Sections shown may not apply to intersections.
 - For details on an inlet structure, see detail for Inlet in the "Pavement Construction Details for Curb and Inlet" Standard Drawing C604.33.
 - Subway crossings: see St. Charles County Private Drains and T. 700 Commercial Drains, See Entrance Construction Details.
 - Exemptions when required shall be established by the Missouri Highway Improvement, Maintenance, Safety, Law and Safety Department and designed by St. Charles County.

BUCKETT CREEK SEWER DISTRICT
TYPICAL CREEK CROSSING

Grouted Rip-Rap is required at all creek crossings where the embankments crossed are steeper than 1 vertical to 2 horizontal ratio slope; and also where there is 3.0 feet or less cover over top of pipe.

Place Rip-Rap on lower 3/4 of slope. Grade upper 1/4 of slope at 1 vertical to 2 horizontal slope for sod or 1 vertical to 2.5 horizontal slope for seed and straw.

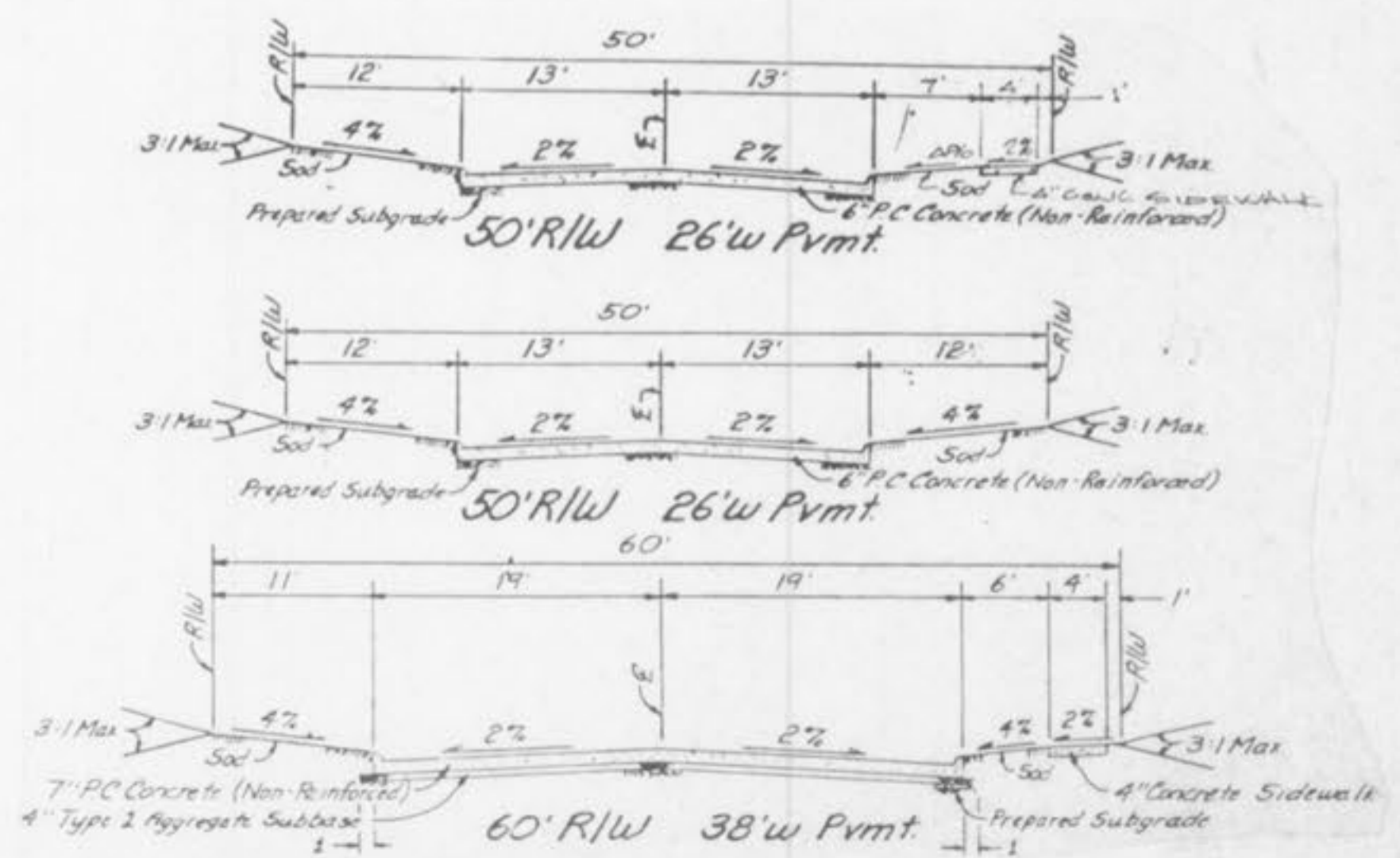
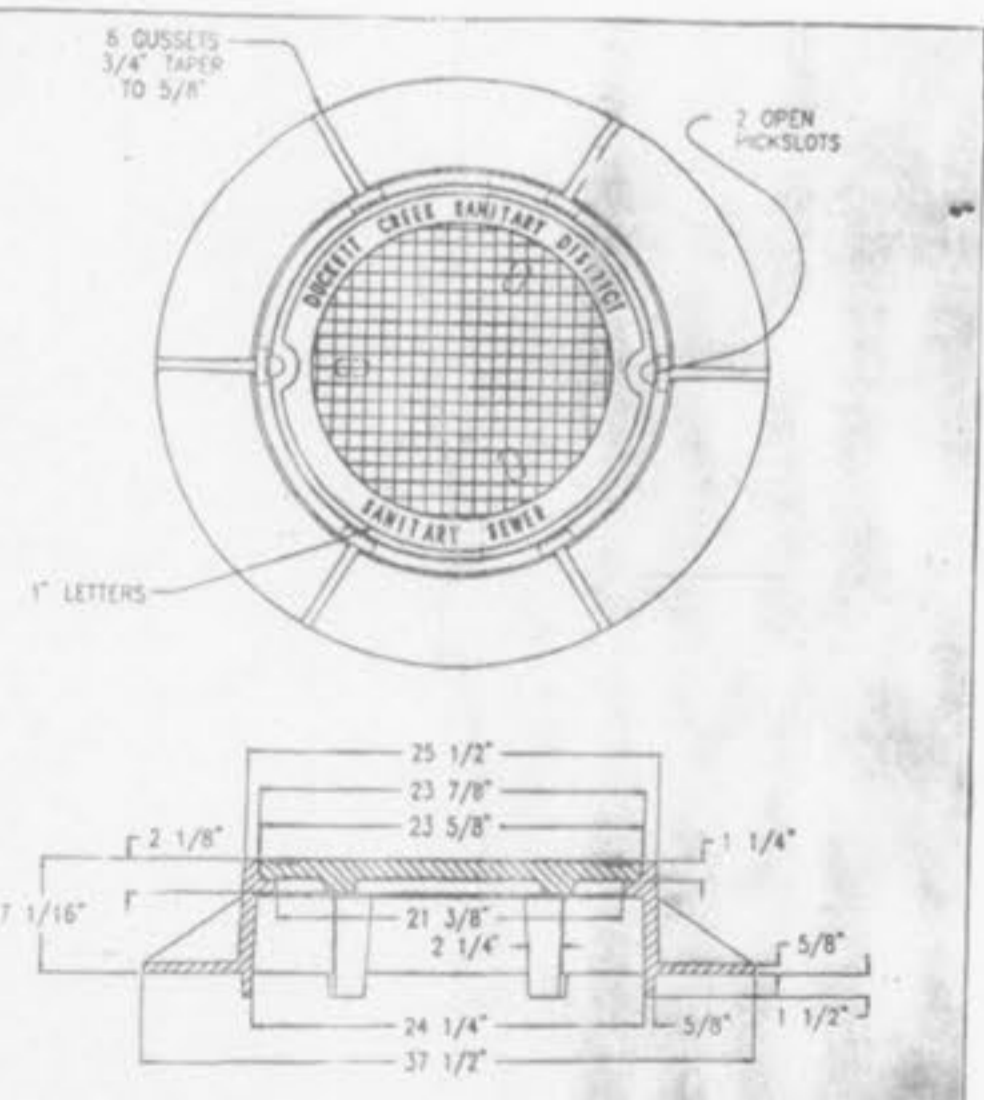
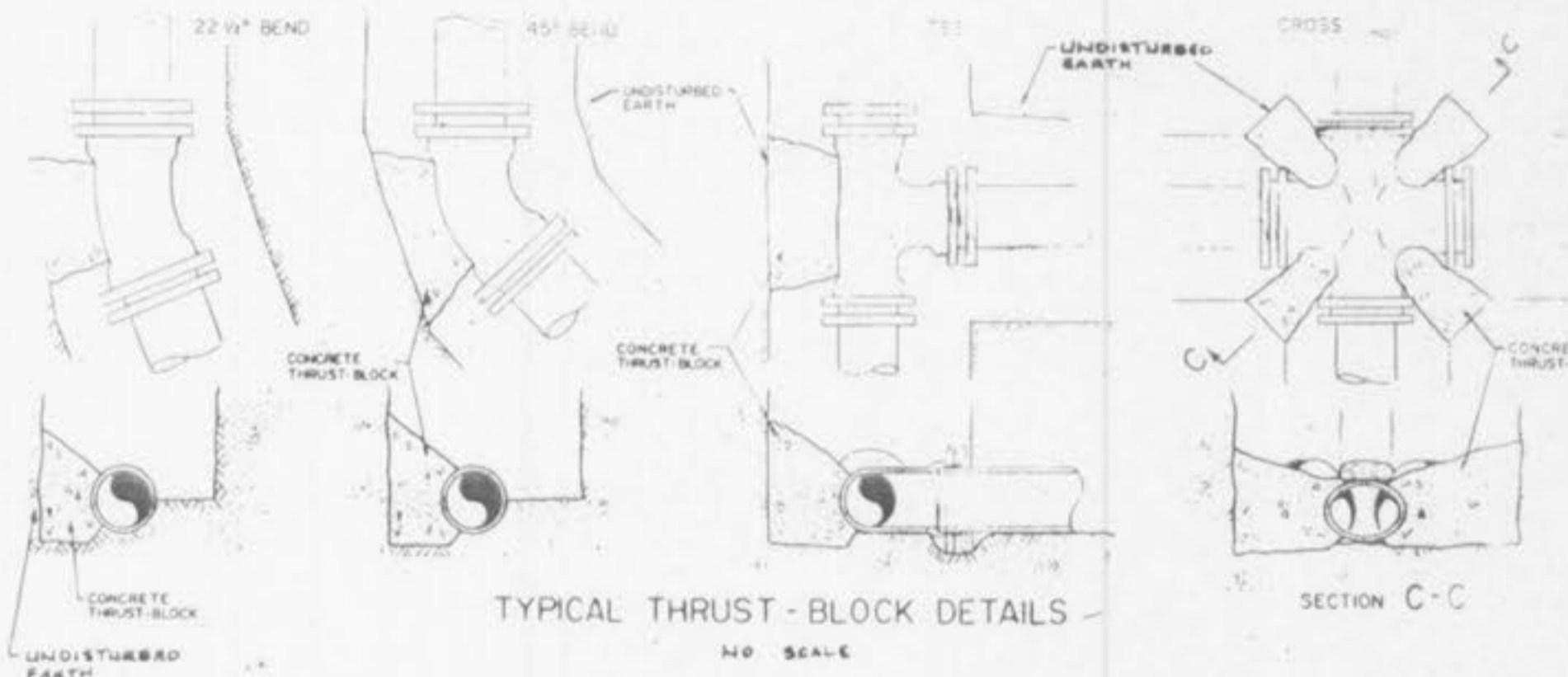
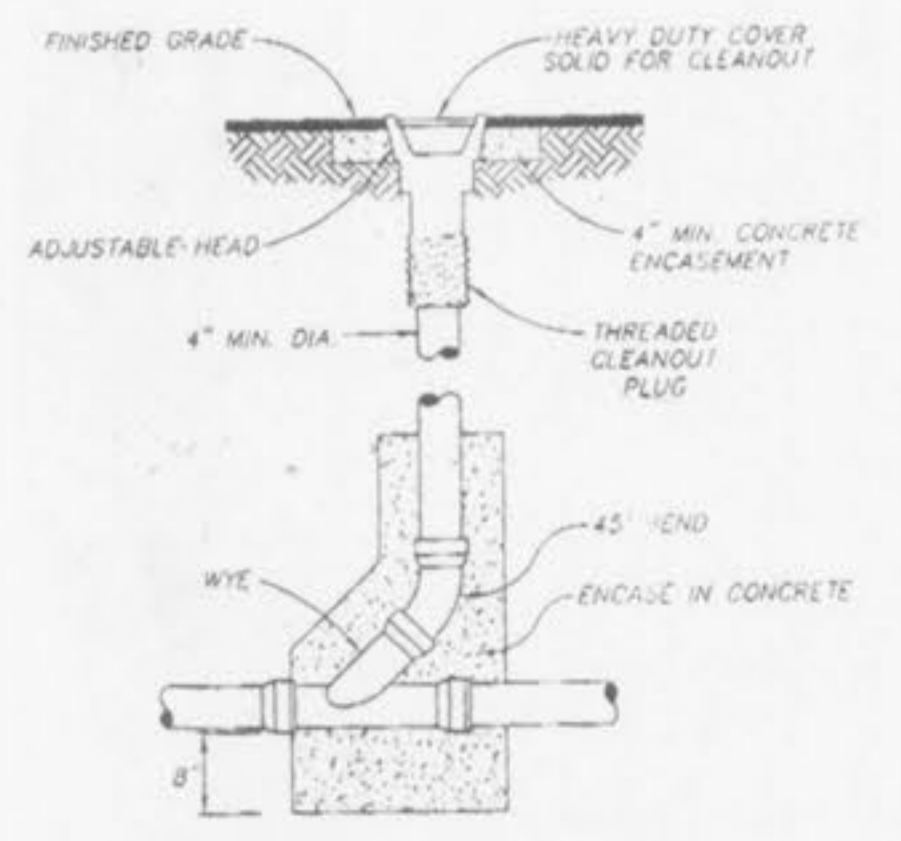
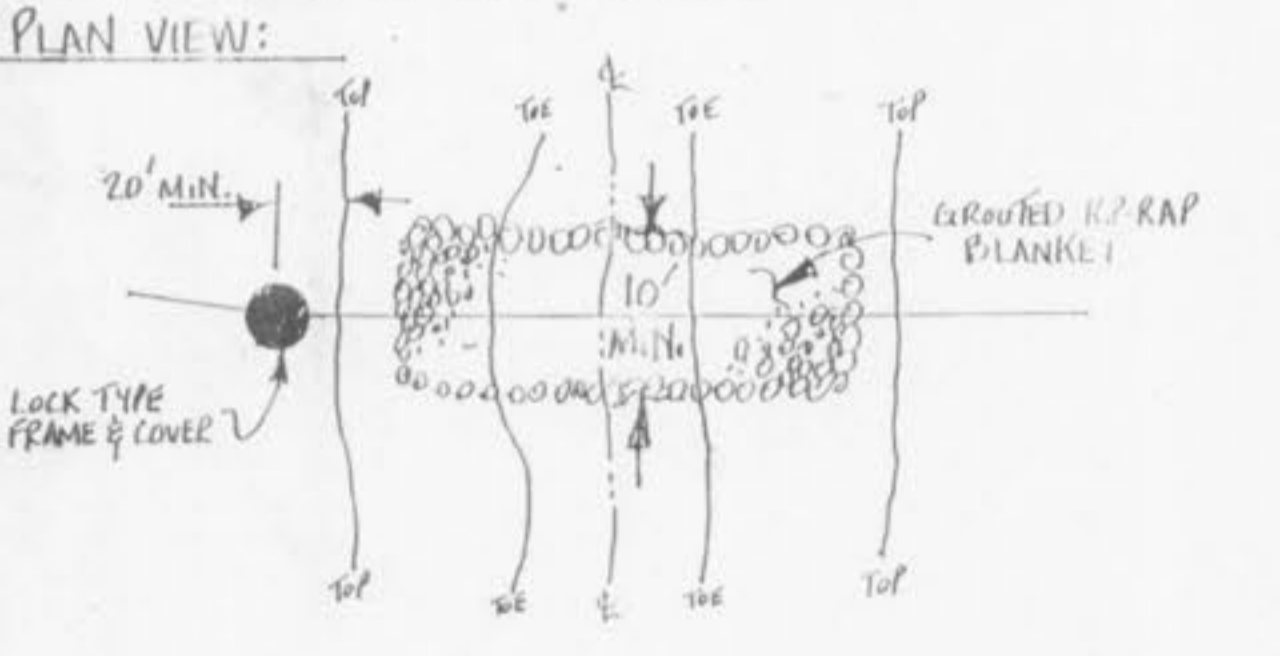
Rip-Rap to be "MSD-5" Gradation, minimum 12" thick, grouted with 8 sack mix, sand cement slurry, broom finish.

Incorporate a 3 foot deep toe wall on embankment's upper edge of Rip-Rap.

Top surface of Rip-Rap should not be higher than adjacent ground surface.

If pipe has less than 12" cover, a paved channel may be required.

Ductile iron pipe required within creek limits.



NOTE: All connections, joints, gaskets, flanges, etc., must be protected from concrete w/ 10 mil. polyethylene film.