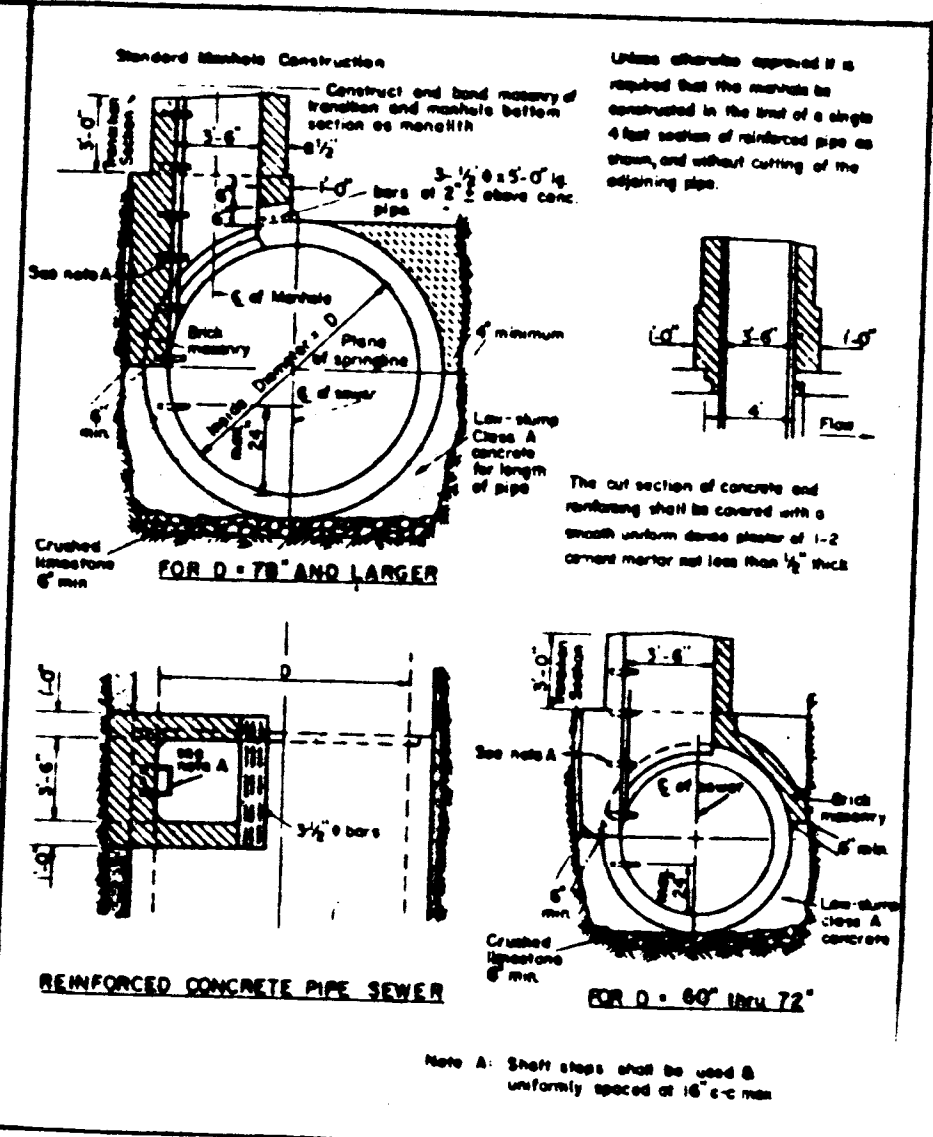
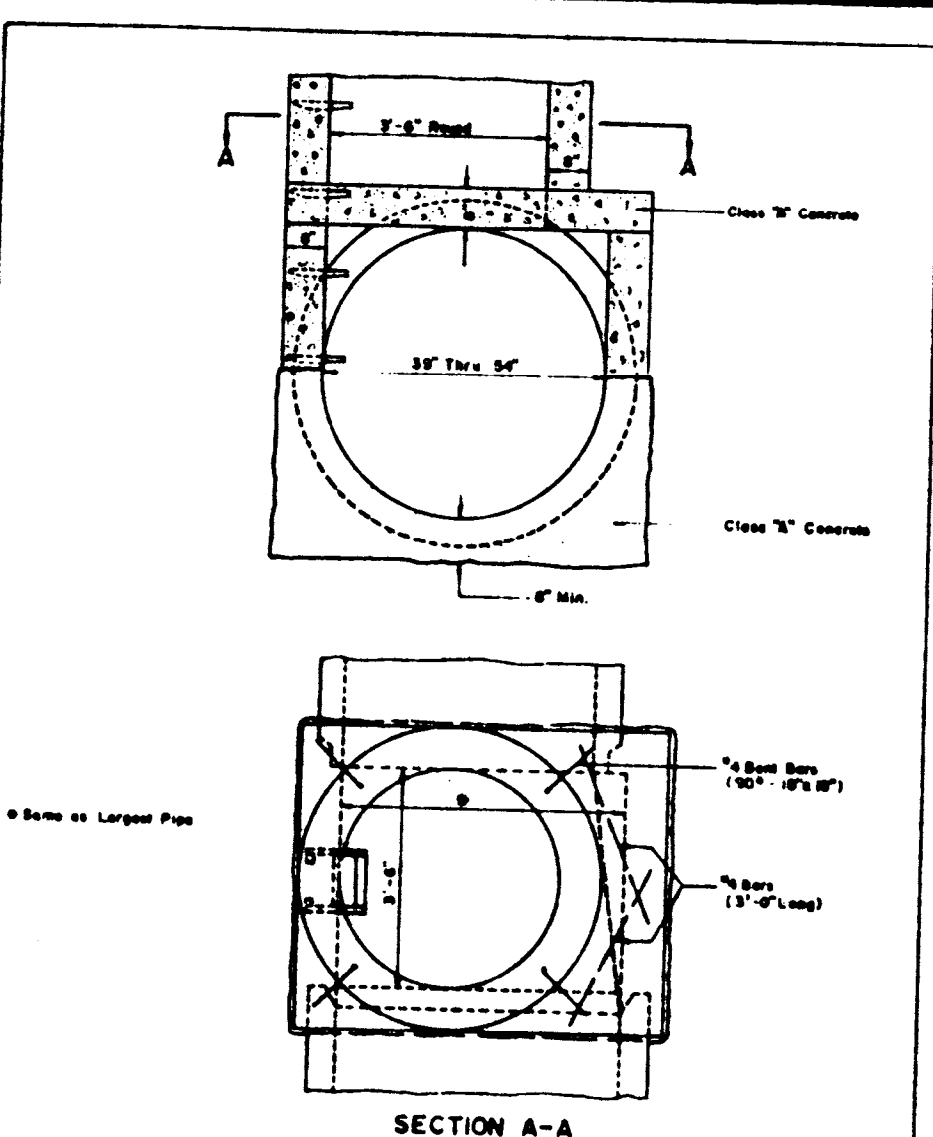


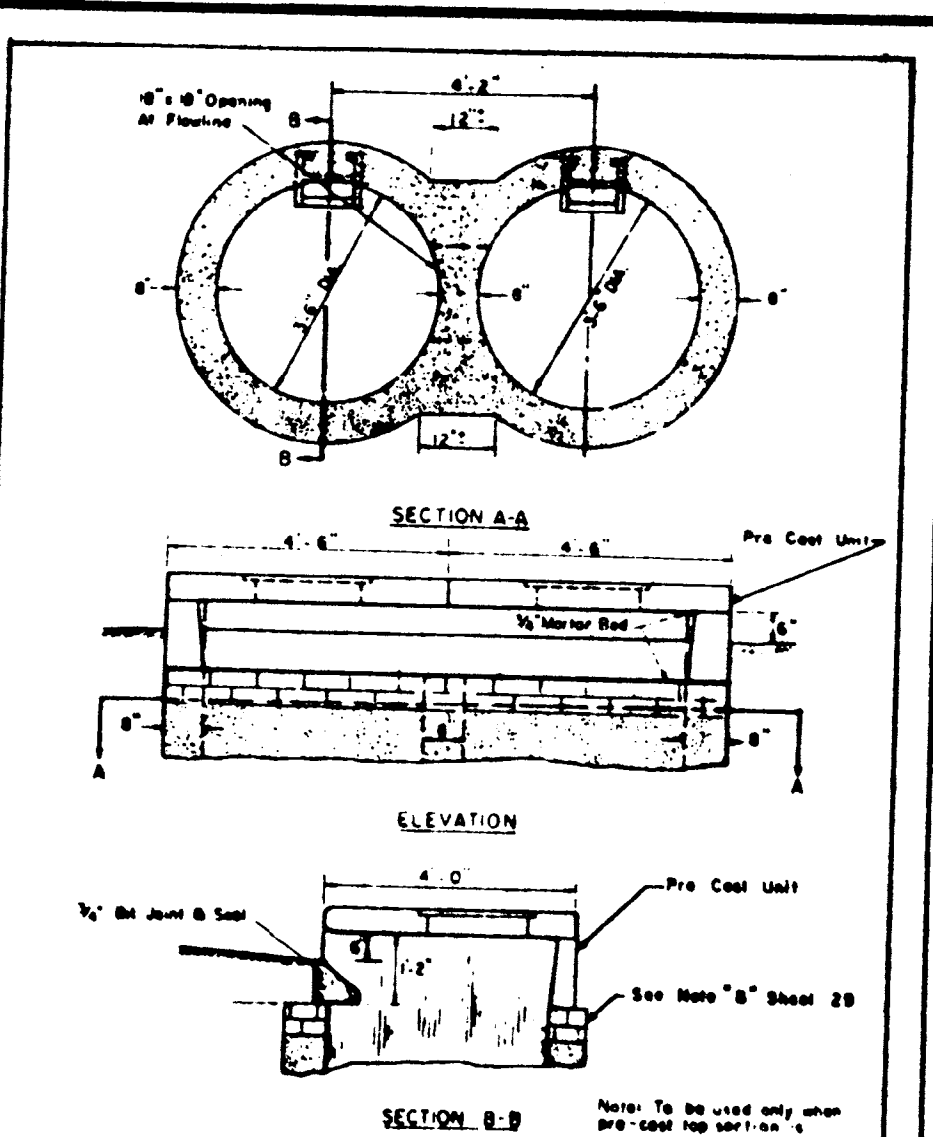
MANHOLE ON CONCRETE PIPE  
 SEWERS 39" THRU 54" DIAMETER  
 METROPOLITAN ST. LOUIS SEWER DISTRICT  
 Standard Details of Sewer Construction  
 Dr. J.P. & D. April 1979 Sheet 11  
 Ch. J.C.K.



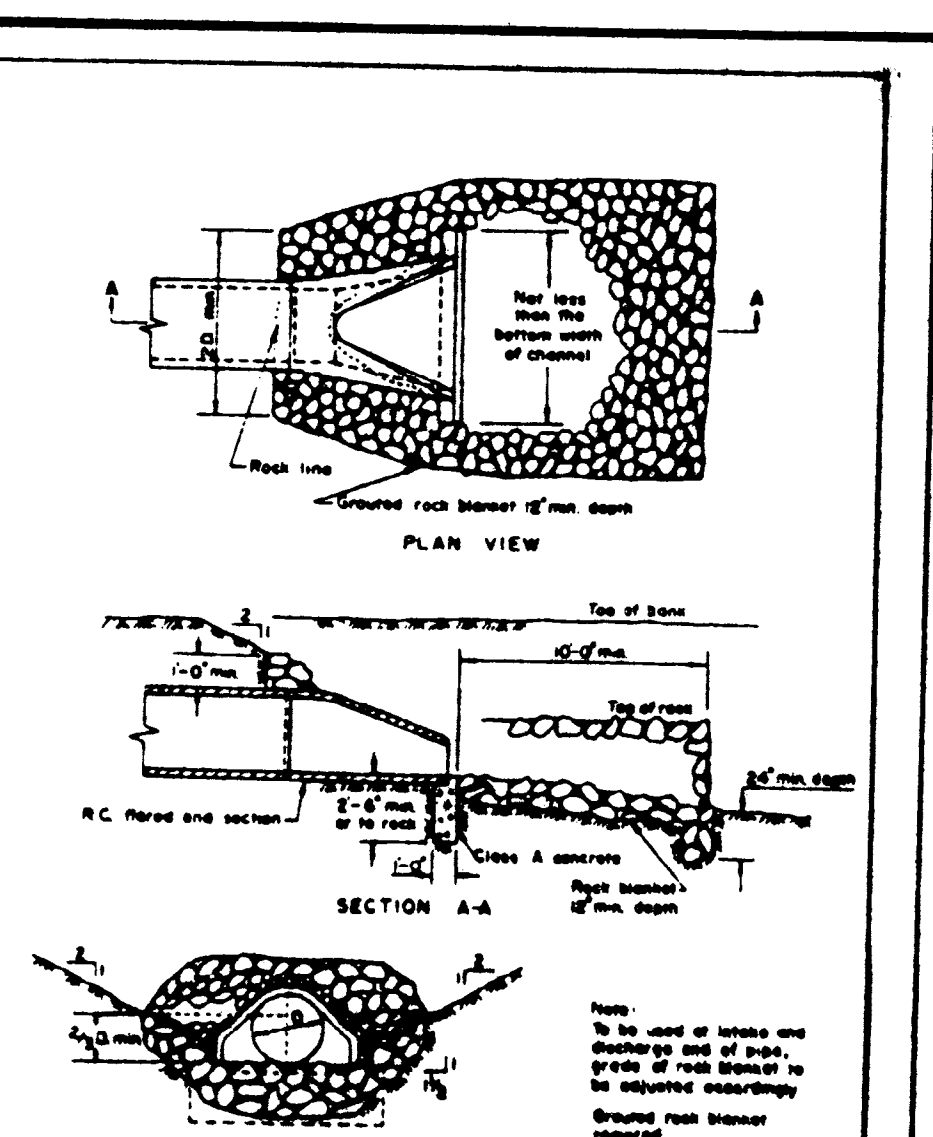
TYPICAL MANHOLE BASE  
 REINFORCED CONCRETE PIPE  
 SEWERS 60" AND LARGER  
 IN DIAMETER  
 METROPOLITAN ST. LOUIS SEWER DISTRICT  
 Standard Details of Sewer Construction  
 Dr. J.P. & D. April 1984 Sheet 13  
 Ch. J.C.K.



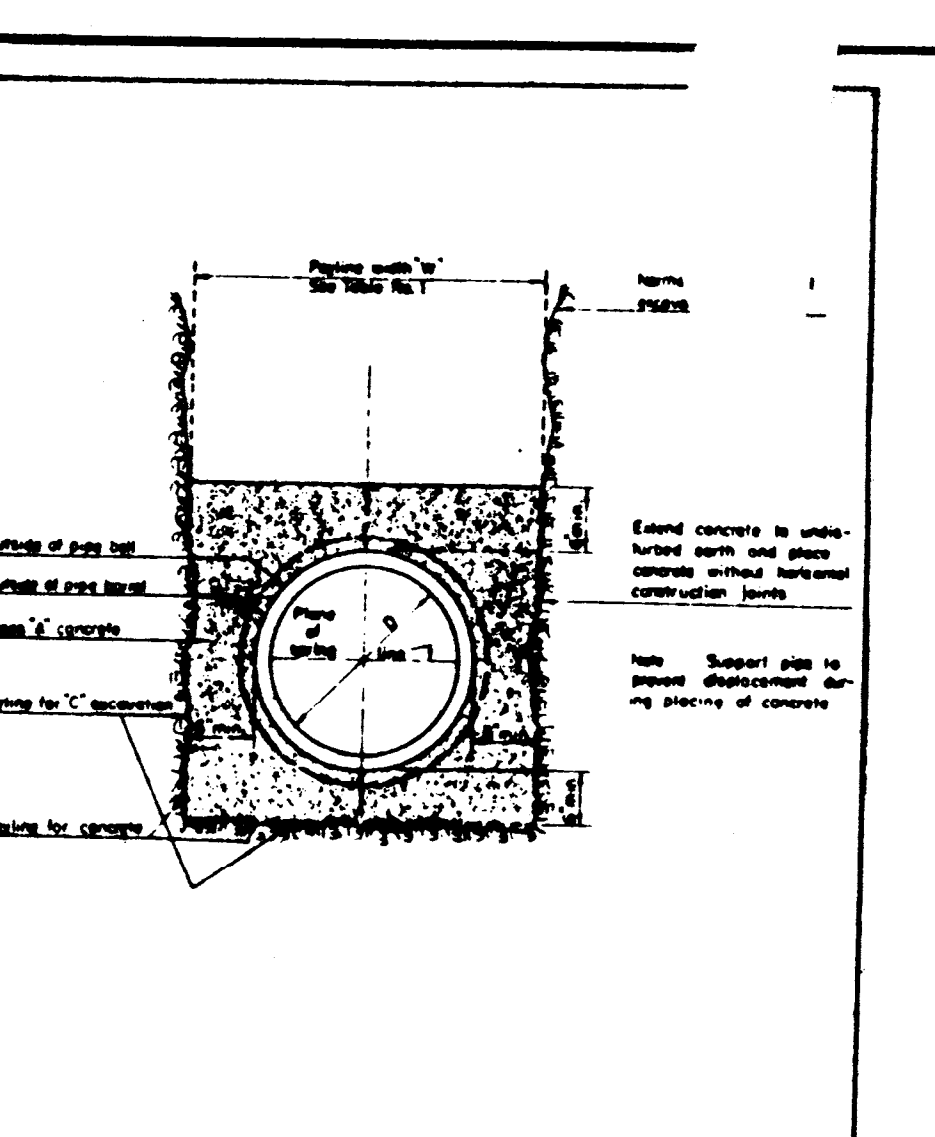
MANHOLE ON CONC. PIPE  
 39" THRU 54" (ALTERNATE)  
 METROPOLITAN ST. LOUIS SEWER DISTRICT  
 Standard Details of Sewer Construction  
 Dr. J.P. & D. April 1979 Sheet 12  
 Ch. J.C.K.



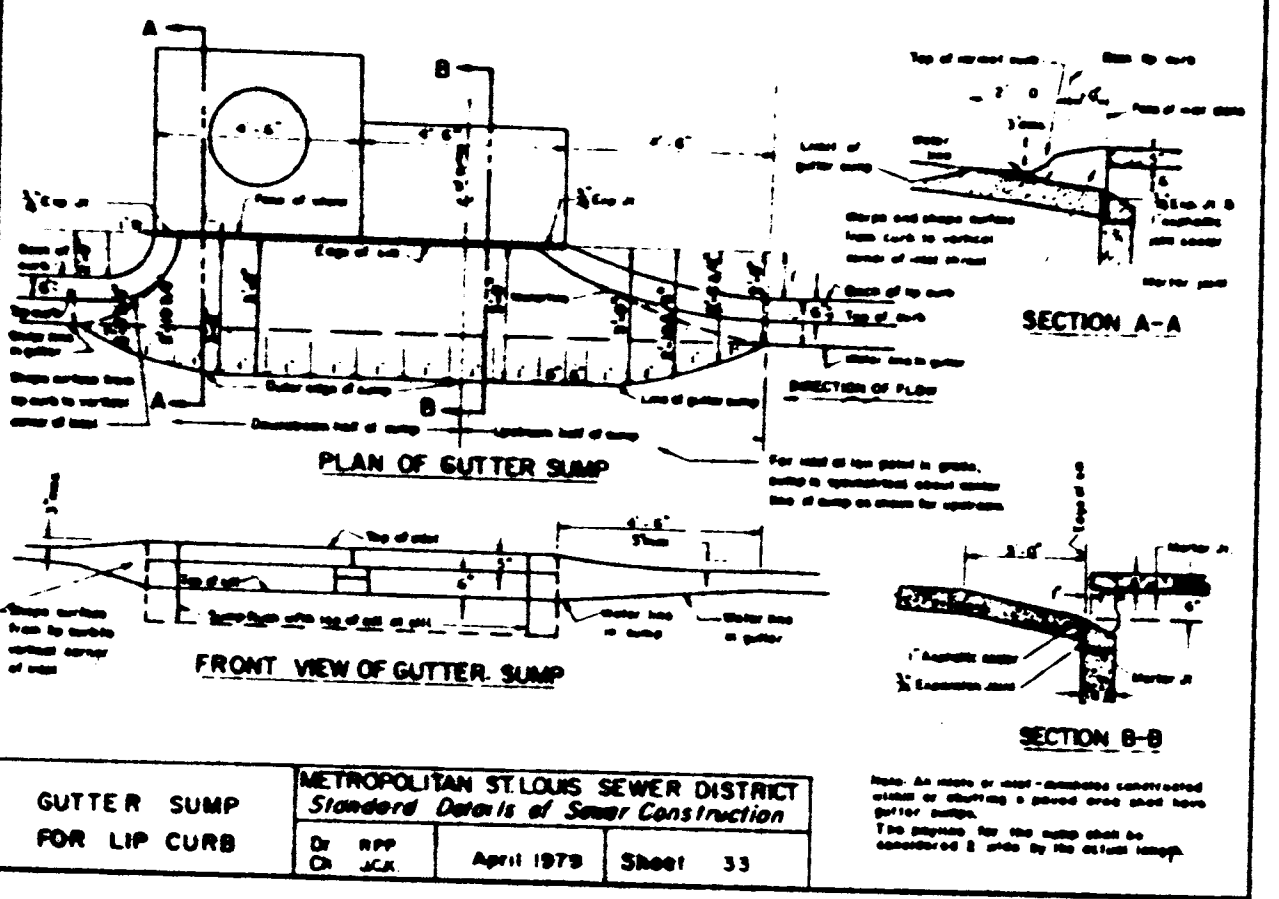
CONCRETE DOUBLE STREET INLET  
 W/PRE CAST TOP UNIT  
 METROPOLITAN ST. LOUIS SEWER DISTRICT  
 Standard Details of Sewer Construction  
 Dr. J.P. & D. June 1984 Sheet 28  
 Ch. J.C.K.



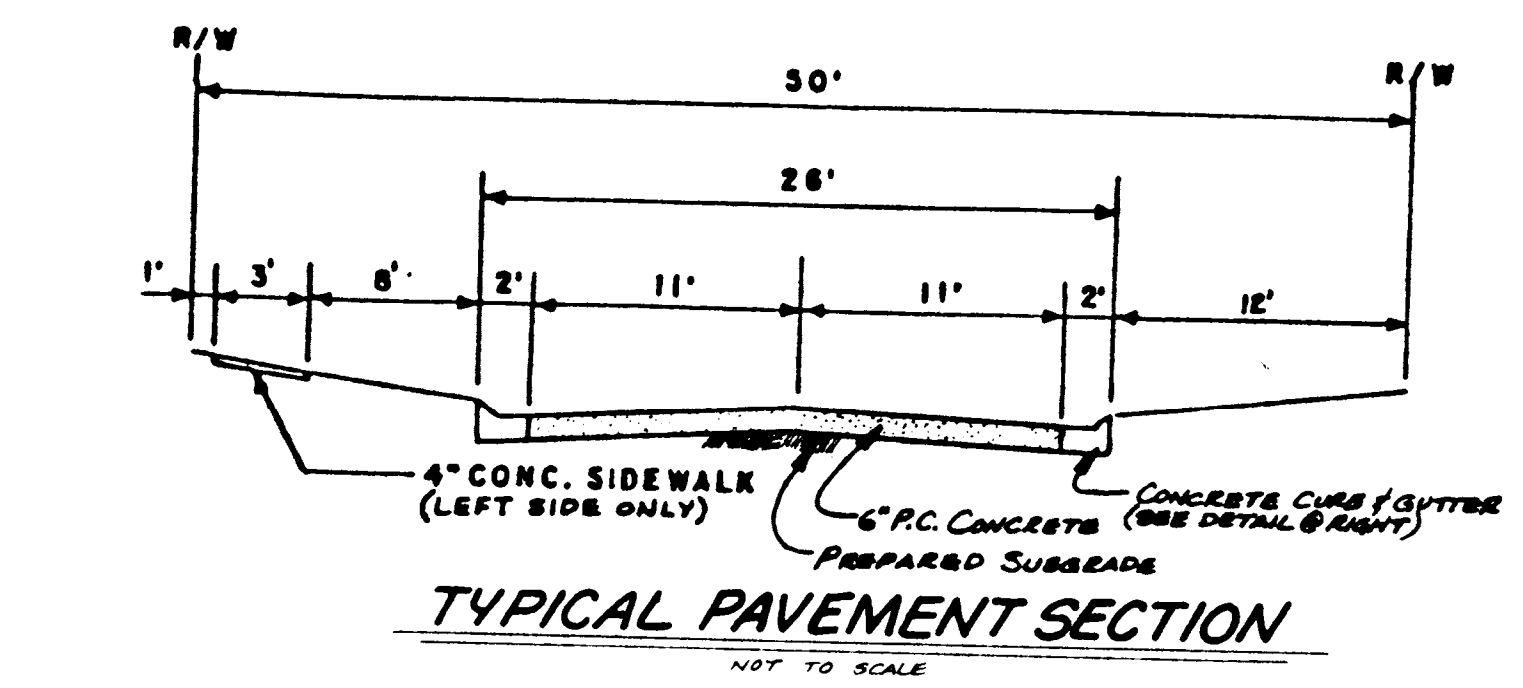
FLARED END SECTION  
 METROPOLITAN ST. LOUIS SEWER DISTRICT  
 Standard Details of Sewer Construction  
 Dr. J.P. & D. April 1979 Sheet 48  
 Ch. J.C.K.



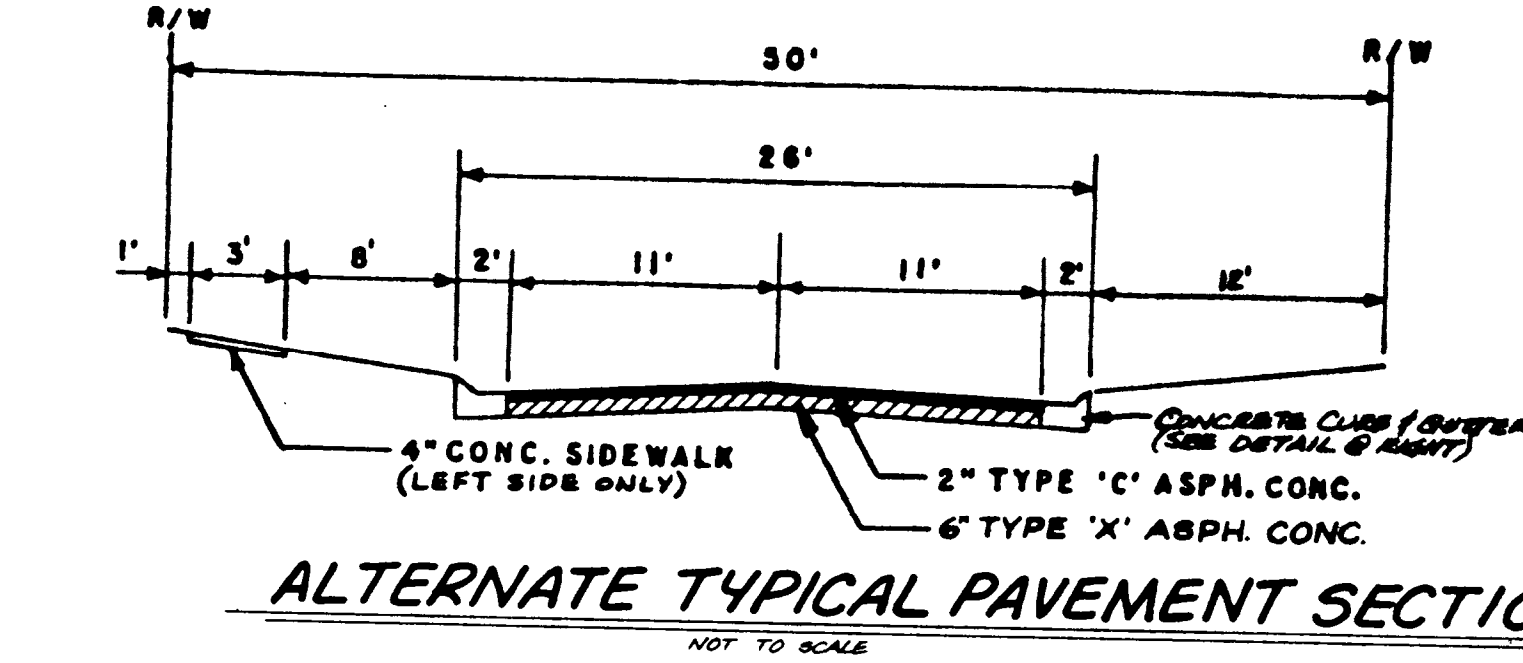
CONCRETE ENCASUREMENT  
 METROPOLITAN ST. LOUIS SEWER DISTRICT  
 Standard Details of Sewer Construction  
 Dr. J.P. & D. April 1979 Sheet 5  
 Ch. J.C.K.



GUTTER SUMP FOR LIP CURB  
 METROPOLITAN ST. LOUIS SEWER DISTRICT  
 Standard Details of Sewer Construction  
 Dr. J.P. & D. April 1979 Sheet 33  
 Ch. J.C.K.



TYPICAL PAVEMENT SECTION  
 NOT TO SCALE



ALTERNATE TYPICAL PAVEMENT SECTION  
 NOT TO SCALE