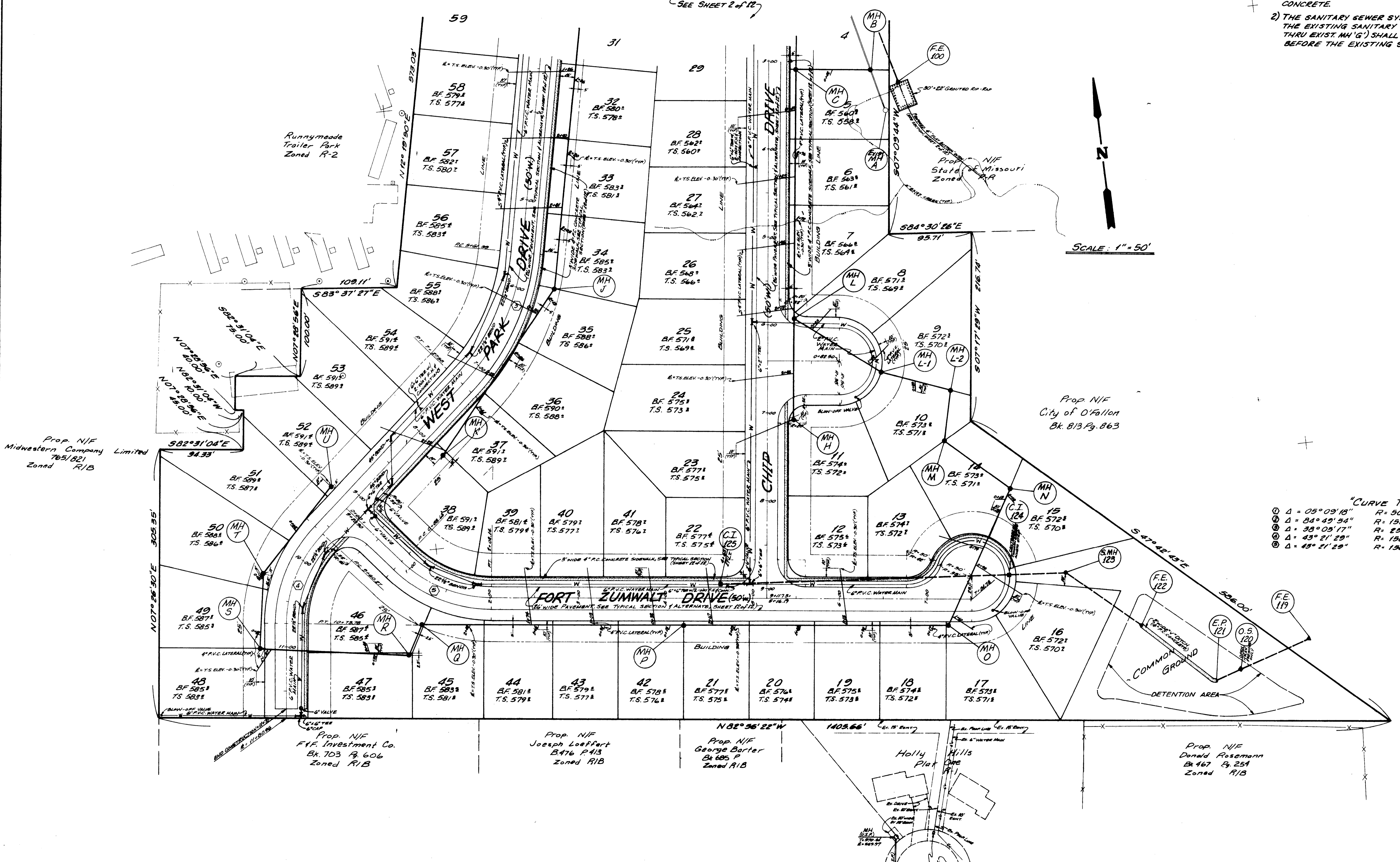


**NOTES**

- 1) ALL GROUT FOR RIP-RAP SHALL BE "HIGH SLUMP READY-MIX CONCRETE."
- 2) THE SANITARY SEWER SYSTEM PROPOSED TO INTERCEPT THE EXISTING SANITARY SEWER SYSTEM (EXIST. MH 'A' THRU EXIST. MH 'G') SHALL BE BUILT AND APPROVED BEFORE THE EXISTING SYSTEM IS ABANDONED.

SEE SHEET 2 of 12



"CURVE TABLE"

① Δ = 05° 09' 18"	R = 500.00'	A = 44.99'
② Δ = 34° 49' 54"	R = 150.00'	A = 222.09'
③ Δ = 38° 05' 17"	R = 290.00'	A = 166.19'
④ Δ = 43° 21' 29"	R = 150.00'	A = 113.51'
⑤ Δ = 43° 21' 29"	R = 150.00'	A = 113.51'