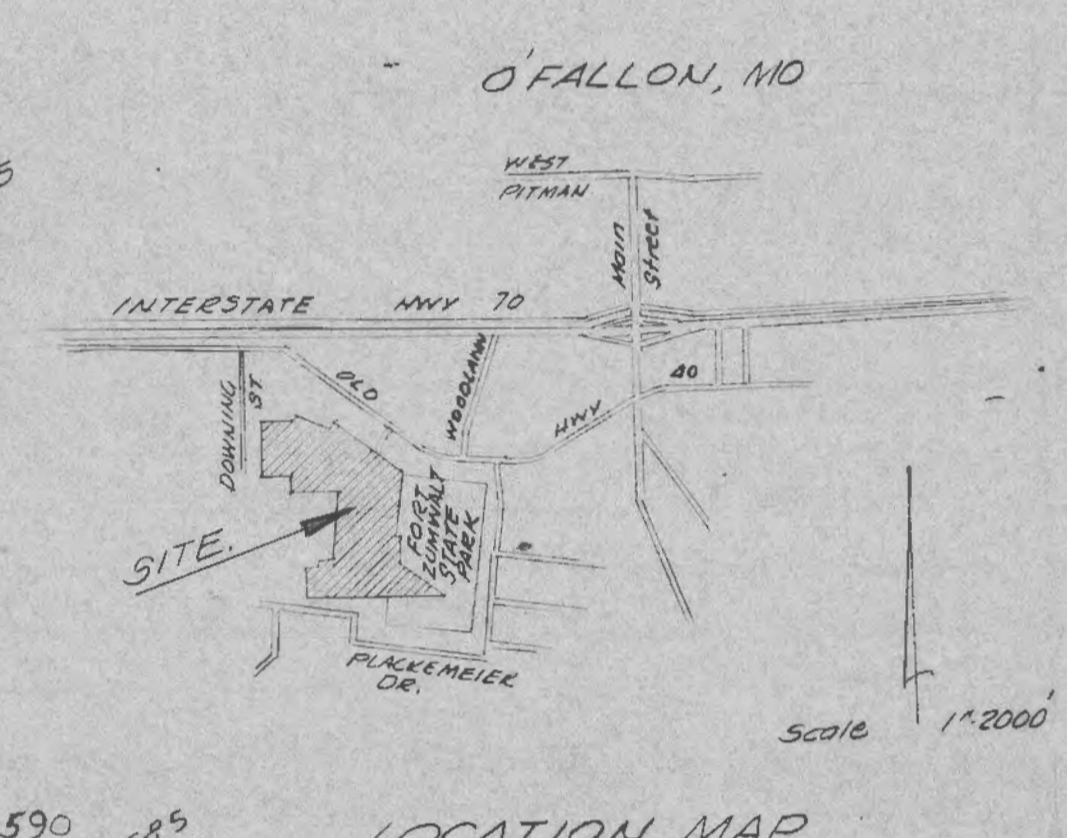
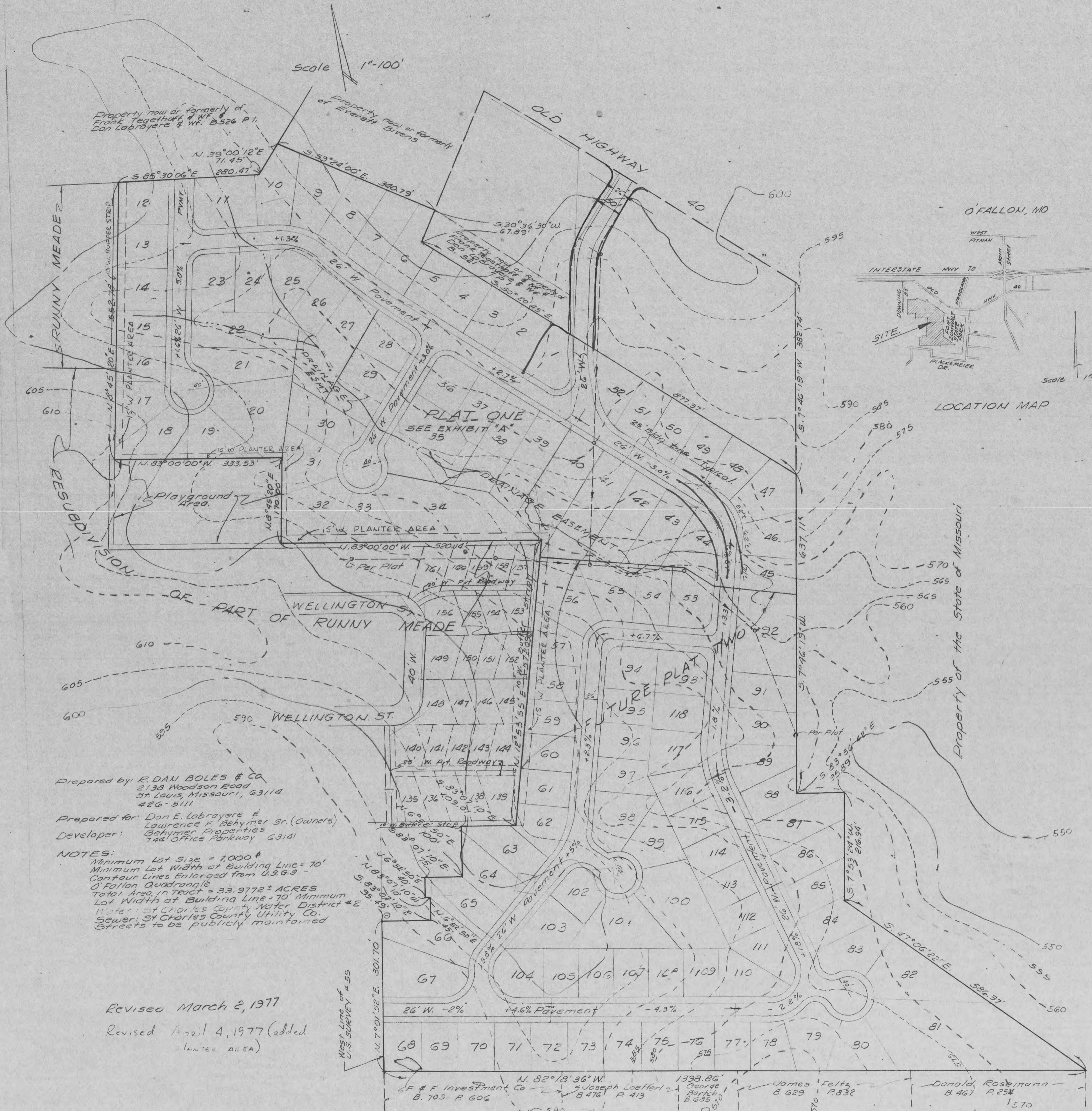


**PRELIMINARY PLAT OF
PARKVIEW PLACE**
PART OF LOT 6 OF D. HEALD HOME PLACE IN
SURVEY 55 TOWNSHIP 47 NORTH, RANGE 3 EAST
ST. CHARLES CO., MISSOURI

Scale 1"=100'



Prepared by: R. DAN BOLES & CO.
2133 Woodson Road
St. Louis, Missouri, 63114
426-5111

Prepared for: Don E. Labrayere &
Lawrence F. Behrmer Sr. (Owners)
Developer: Behrmer Properties
744 Office Parkway 63141

NOTES:
Minimum Lot Size = 7,000 sq ft
Minimum Lot Width at Building Line = 70'
Corner Lines Enlarged from U.S.G.S.
O'Fallon Quadrangle
Total Area in Tract = 33.9772 ACRES
Lot Width at Building Line = 70' Minimum
Water: St. Charles County Water District #2.
Sewer: St. Charles County Utility Co.
Streets to be publicly maintained

Revised March 2, 1977
Revised April 4, 1977 (added
PLANTER AREA)

West Line of U.S. SURVEY #55
U. 7°01'52"E. 301.70
N. 82°18'36"W. 1398.86'
F & F Investment Co. B. 703 P. 606
Joseph Loeffler & Co. B. 476 P. 413
George R. Bartch B. 685 P. 0
James Felts B. 629 P. 832
Donald Rosemann B. 467 P. 254
1570